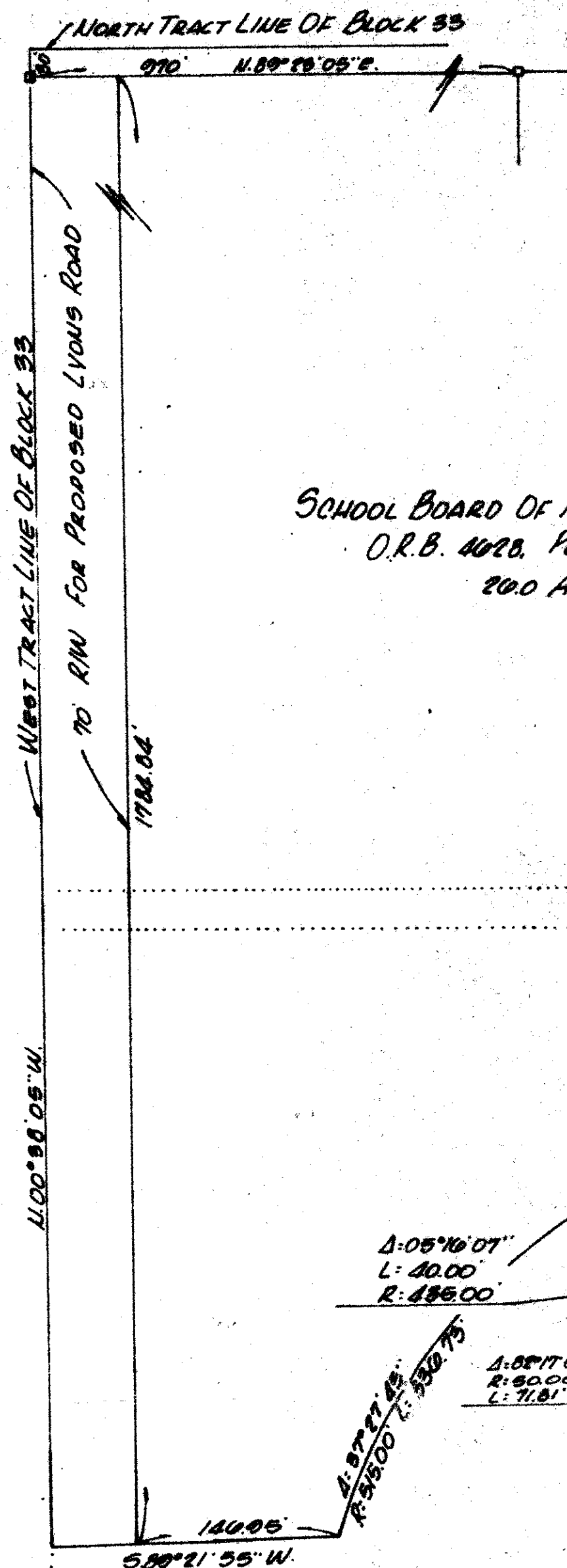


LAKES OF SHERBROOKE PHASE 8

32/44/42

SUBDIVISION	*Lakes of Sherbrooke
BOOK	50
PAGE	183
FLOOD ZONE	FLOOD MAP # 1707
QUAD	#48
ZONING	
SE	ZIP CODE 33467
PUD NAME	Phase 8
TAZ	739

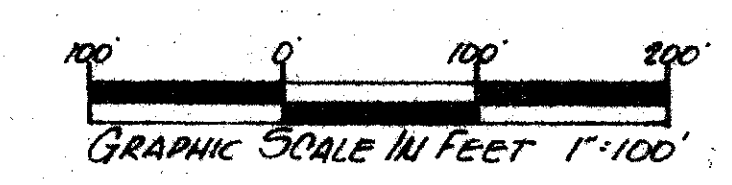
183



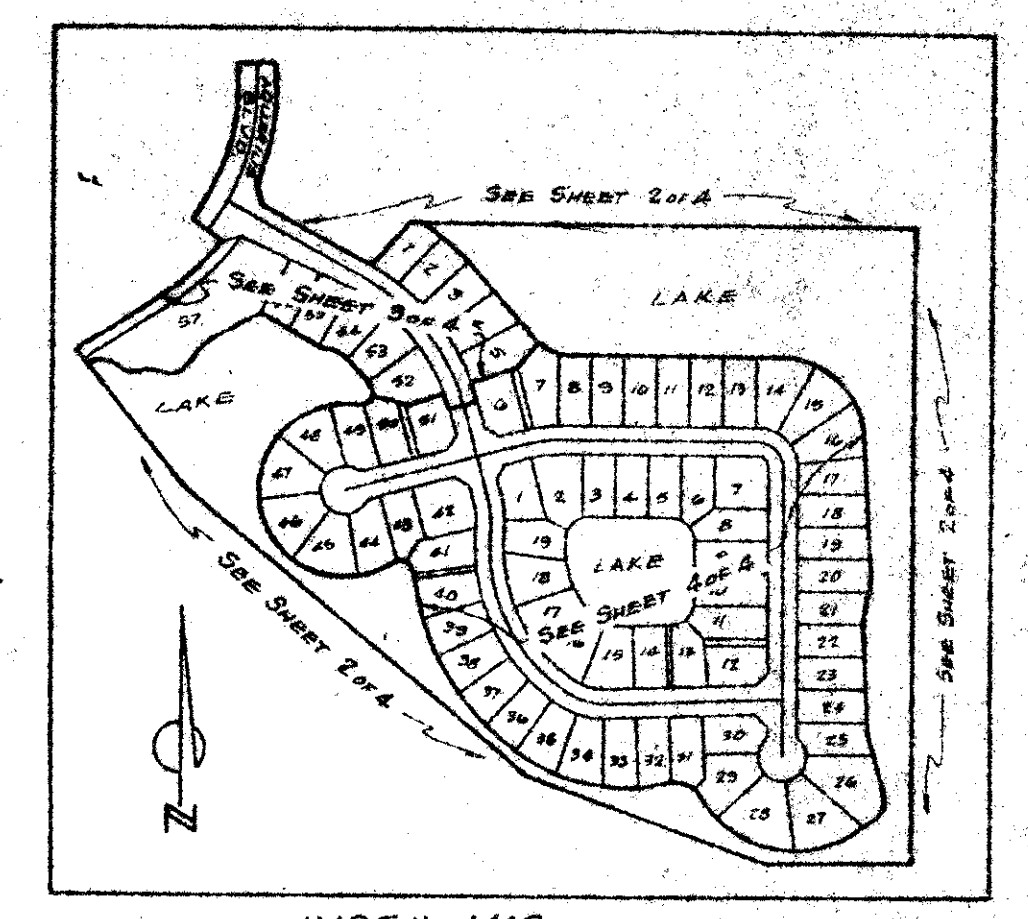
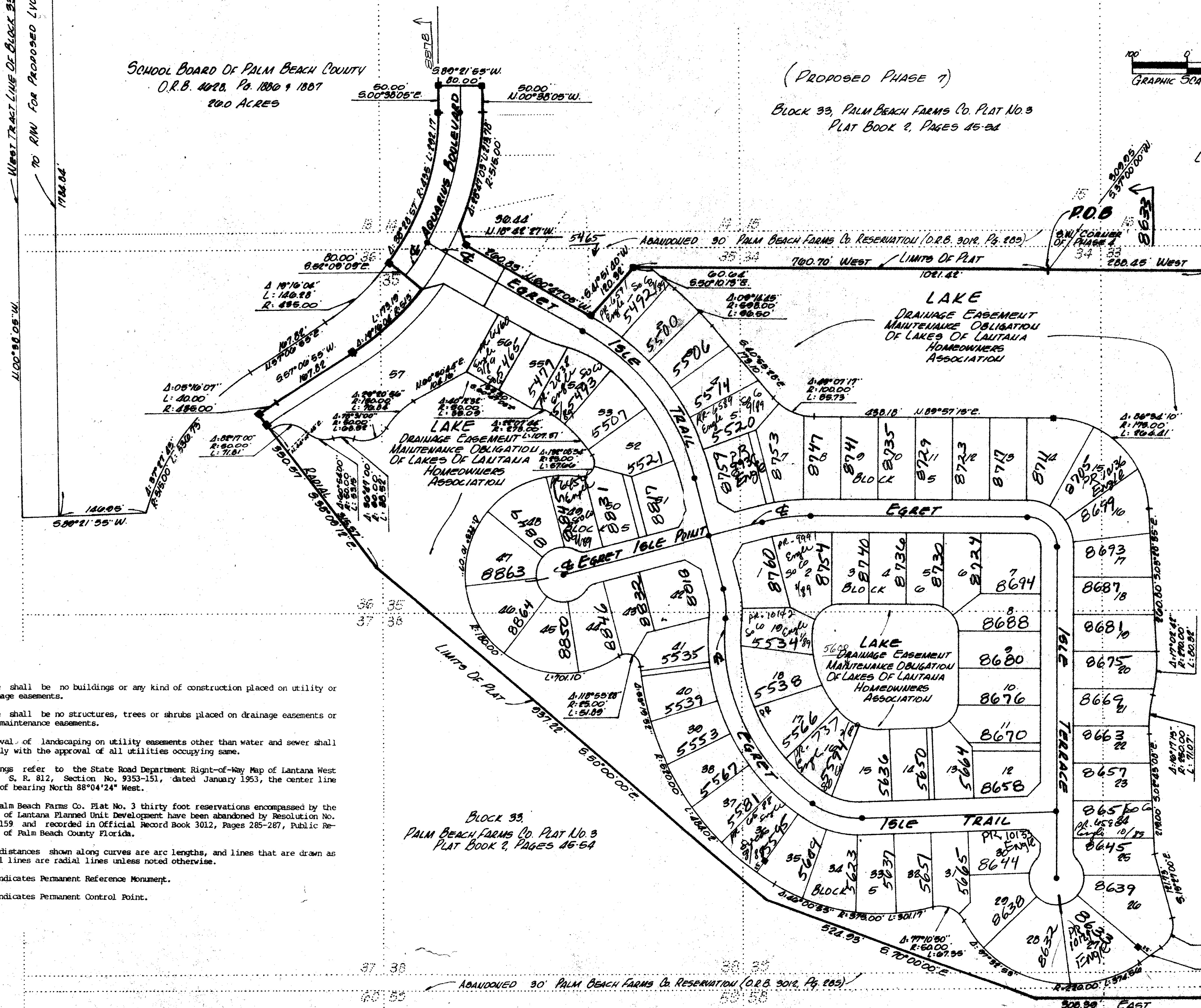
SCHOOL BOARD OF PALM BEACH COUNTY
O.R.B. 4028, Pgs. 1880 & 1887
200 ACRES

(PROPOSED PHASE 7)

Block 33, PALM BEACH FARMS Co. PLAT No. 3
PLAT BOOK 2, PAGES 45-54



LAKES OF SHERBROOKE - PHASE 4
P.B. 40, Pgs. 102 & 103



LAKES OF SHERBROOKE
PHASE 3
P.B. 41, PAGES 40-43

NOTE:

There shall be no buildings or any kind of construction placed on utility or drainage easements.

There shall be no structures, trees or shrubs placed on drainage easements or lake maintenance easements.

Approval of landscaping on utility easements other than water and sewer shall be only with the approval of all utilities occupying same.

Bearings refer to the State Road Department Right-of-Way Map of Lantana West Road, S. R. 812, Section No. 9353-151, dated January 1953, the center line thereof bearing North 88°04'24" West.

All Palm Beach Farms Co. Plat No. 3 thirty foot reservations encompassed by the Lakes of Lantana Planned Unit Development have been abandoned by Resolution No. R-79-159 and recorded in Official Record Book 3012, Pages 285-287, Public Records of Palm Beach County Florida.

All distances shown along curves are arc lengths, and lines that are drawn as radial lines are radial lines unless noted otherwise.

■ - indicates Permanent Reference Monument.
● - indicates Permanent Control Point.

BLOCK 33,
PALM BEACH FARMS Co. PLAT No. 3
PLAT BOOK 2, PAGES 46-54

ABANDONED 30' PALM BEACH FARMS Co. RESERVATION (O.R.B. 3012, Pg. 285)

0268-204
56/183

ADAIR & BRADY, INC. CONSULTING ENGINEERS & LAND SURVEYORS			Phase 8 Record Plat
WEST PALM BEACH			
Dr. H.E. F.B.	Book 1-120	SHEET 2 of 4	
Ch. D.R. P.G.	DATE MAY 1957		
FP-1055			