

-Northtree-

-Lying In Sections Nine, Ten And Sixteen, Township Forty Five South, Range Forty Two East-
 Being A Replat Of Portions Of Blocks Forty And Forty One, Palm Beach Farms Company's Plat Number Three, Recorded In Plat Book Two,
 Pages Forty Five Through Fifty Four, Inclusive, Public Records, Palm Beach County, Florida
 -A Part Of Boynton West, A Planned Unit Development-

July, A.D., Nineteen Hundred Eighty Six

9, 10, 16, 45, 42
 SUBDIVISION Northtree
 BOOK 56 PAGE 192
 FLOOD ZONE B FLOOD MAP 183A
 QUAD 9-16-49 ZONING
 CS 16-24 ZIP CODE 33409
 PUD NAME
 TAZ 439

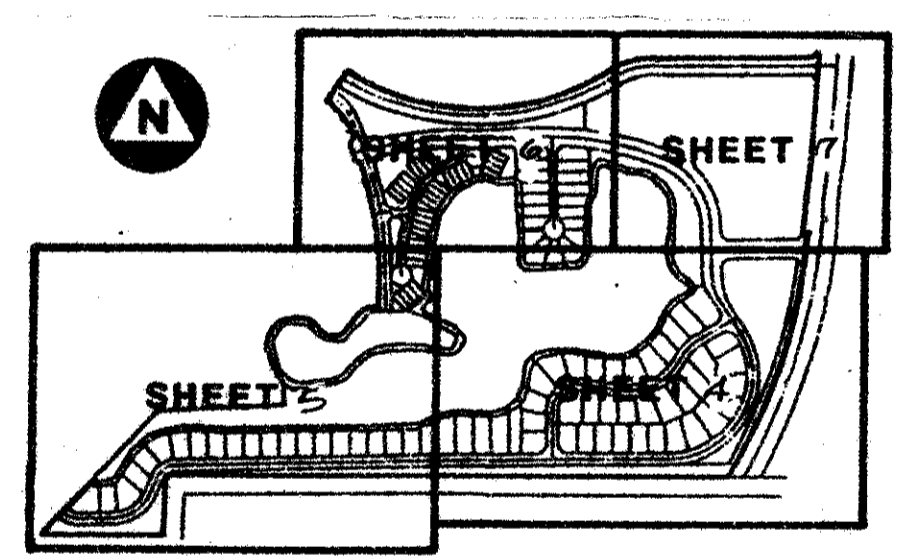
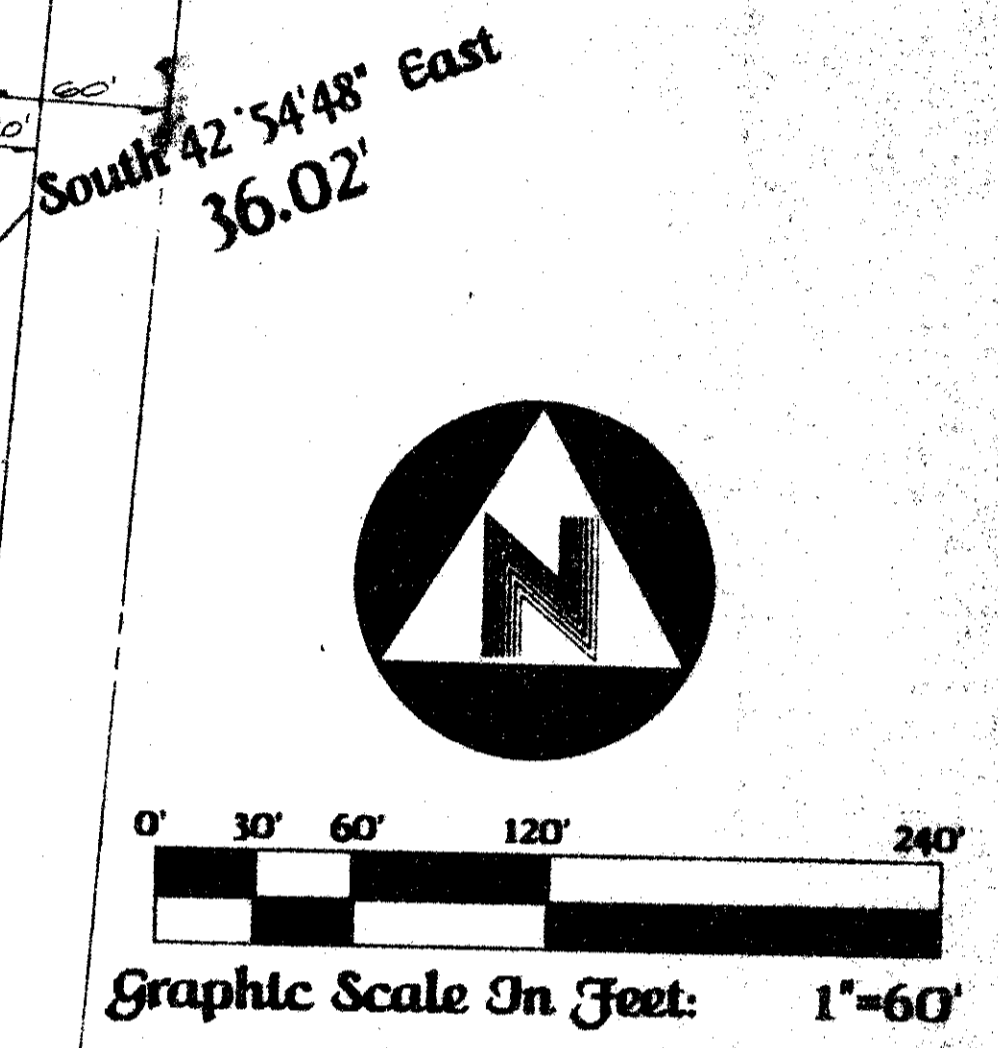
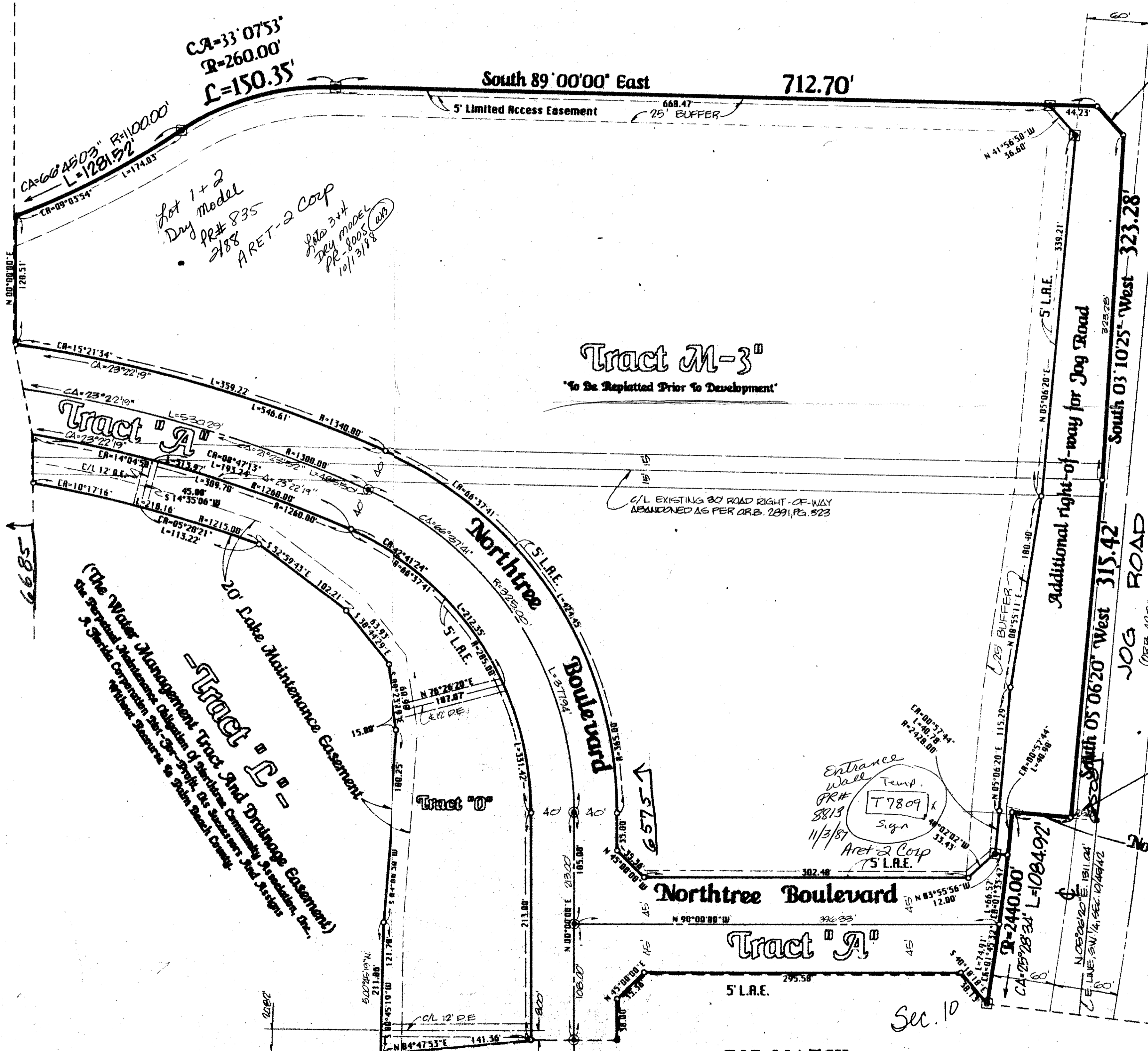
192
 State of Florida)
 County of Palm Beach)
 This Plat was filed for record
 at _____ this _____ day of
 _____, A.D., 1986, and
 duly recorded in Plat Book
 _____ on Page _____ thru _____
 John R. Dunkle,
 Clerk of the Circuit Court.
 By _____
 Deputy Clerk

Sheet 07 Of 07

Palm Beach Farms Company's Plat Number Three
 (Plat Book Two, Pages Forty Five Through Fifty Four)

Palm Beach Farms Company's Plat Number Three
 (Plat Book Two, Pages Forty Five Through Fifty Four)

FOR MATCH
 SEE SHEET 6 OF 7



KEY MAP
 Not To Scale

- Legend:**
- Denotes a permanent reference monument (P.R.M.)
 - Denotes a permanent control point (P.C.P.)
 - D.E. Denotes a drainage easement.
 - U.E. Denotes a utility easement.
 - L.A.E. Denotes a limited access easement.

FOR MATCH
 SEE SHEET 4 OF 7

P.O.B.
 (Point Of Beginning)

Collect
 Plat. 8-6-25

0490-30p
 56/192

North 84° 53' 40" West 55.00'

This instrument was prepared by Wm. R. Van Campen, R.L.S.,
 in and for the offices of Bench Mark Land Surveying and
 Mapping, Inc., Four Points Centre, 50 South Military Trail,
 Suite 200, West Palm Beach, Florida, 33415 (305) 689-2111

BENCH MARK
 land surveying and mapping, inc.
 WEST PALM BEACH, FLORIDA

-Record Plat-
-Northtree-

PLAN HOLD CORPORATION • IRVINE, CALIFORNIA
 RECORDED BY NUMBER 0754R
 PLAN HOLD CORPORATION • IRVINE, CALIFORNIA
 RECORDED BY NUMBER 0754R
 PLAN HOLD CORPORATION • IRVINE, CALIFORNIA
 RECORDED BY NUMBER 0754R
 PLAN HOLD CORPORATION • IRVINE, CALIFORNIA
 RECORDED BY NUMBER 0754R