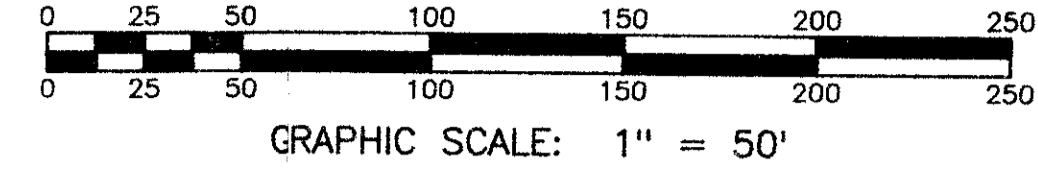


CANDLEWOOD

A PORTION OF SECTION 31, TOWNSHIP 46 SOUTH, RANGE 43 EAST,
LYING AND BEING IN PALM BEACH COUNTY, FLORIDA.

A PART OF PALM AIRE EAST P.U.D.
JULY, 1986

15.898 ACRES



Darby and Way, Inc.
PROFESSIONAL SURVEYING AND ENGINEERING

1439 S. POMPANO PARKWAY, POMPANO BCH FL. 33069
(305) 975-8588

SHEET 2 OF 2

2

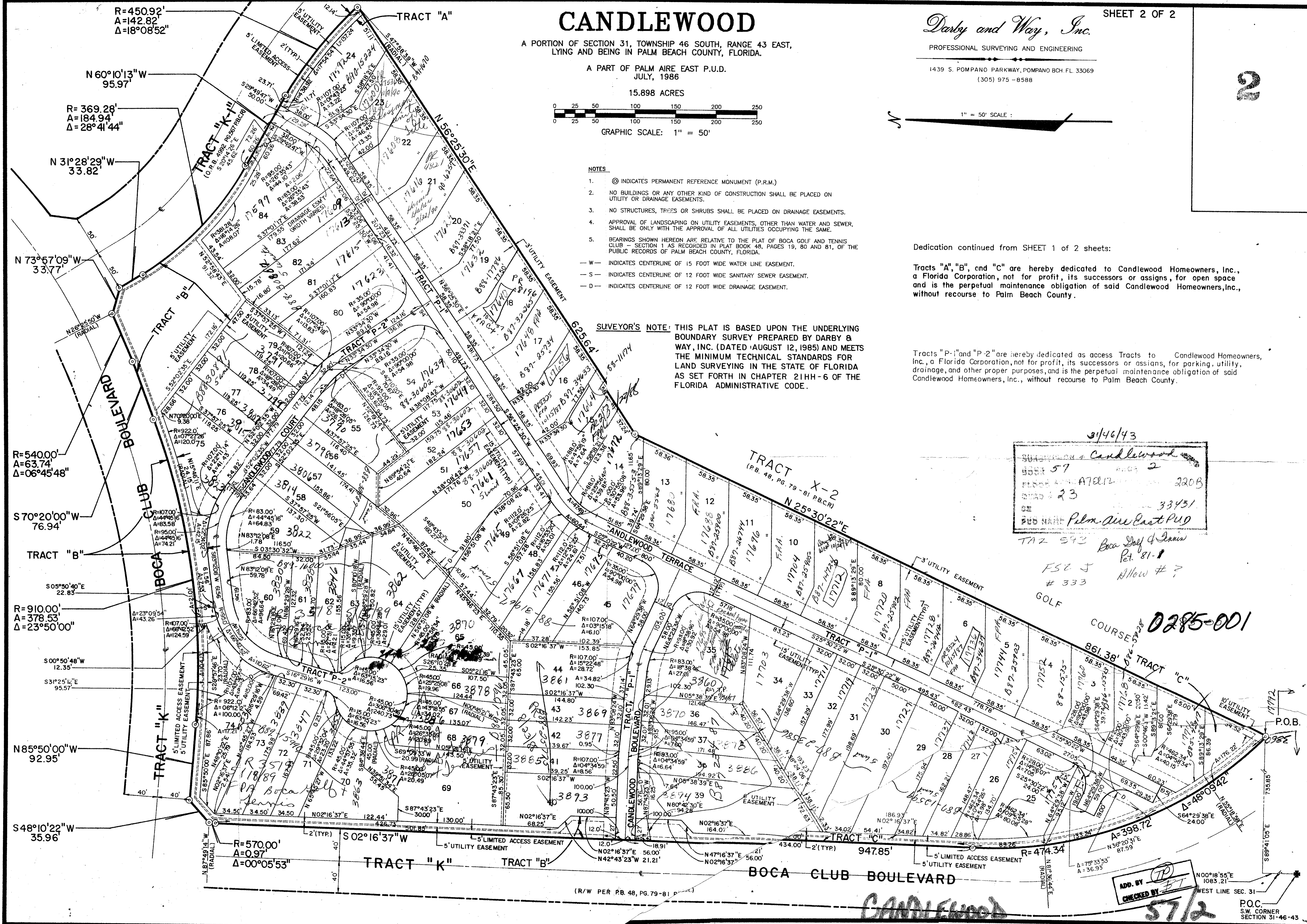
- NOTES
1. © INDICATES PERMANENT REFERENCE MONUMENT (P.R.M.)
 2. NO BUILDINGS OR ANY OTHER KIND OF CONSTRUCTION SHALL BE PLACED ON UTILITY OR DRAINAGE EASEMENTS.
 3. NO STRUCTURES, TREES OR SHRUBS SHALL BE PLACED ON DRAINAGE EASEMENTS.
 4. APPROVAL OF LANDSCAPING ON UTILITY EASEMENTS, OTHER THAN WATER AND SEWER, SHALL BE ONLY WITH THE APPROVAL OF ALL UTILITIES OCCUPYING THE SAME.
 5. BEARINGS SHOWN HEREON ARE RELATIVE TO THE PLAT OF BOCA GOLF AND TENNIS CLUB - SECTION 1 AS RECORDED IN PLAT BOOK 48, PAGES 19, 80 AND 81, OF THE PUBLIC RECORDS OF PALM BEACH COUNTY, FLORIDA.
- W — INDICATES CENTERLINE OF 15 FOOT WIDE WATER LINE EASEMENT.
— S — INDICATES CENTERLINE OF 12 FOOT WIDE SANITARY SEWER EASEMENT.
— D — INDICATES CENTERLINE OF 12 FOOT WIDE DRAINAGE EASEMENT.

SURVEYOR'S NOTE: THIS PLAT IS BASED UPON THE UNDERLYING BOUNDARY SURVEY PREPARED BY DARBY & WAY, INC. (DATED AUGUST 12, 1985) AND MEETS THE MINIMUM TECHNICAL STANDARDS FOR LAND SURVEYING IN THE STATE OF FLORIDA AS SET FORTH IN CHAPTER 21HH-6 OF THE FLORIDA ADMINISTRATIVE CODE.

Dedication continued from SHEET 1 of 2 sheets:

Tracts "A", "B", and "C" are hereby dedicated to Candlewood Homeowners, Inc., a Florida Corporation, not for profit, its successors or assigns, for open space and is the perpetual maintenance obligation of said Candlewood Homeowners, Inc., without recourse to Palm Beach County.

Tracts "P-1" and "P-2" are hereby dedicated as access Tracts to Candlewood Homeowners, Inc., a Florida Corporation, not for profit, its successors or assigns, for parking, utility, drainage, and other proper purposes, and is the perpetual maintenance obligation of said Candlewood Homeowners, Inc., without recourse to Palm Beach County.



3/46/43
SUBDIVISION: Candlewood
BLOCK 57
PLAT BOOK 48, PG. 79-81 (P.B.C.R.)
220B
33431
SUB PART Palm Aire East PUD

TAZ 593 Boca Golf & Tennis
Pet. 81-1
FSE J
333
Allow # ?
GOLF

0285-001

ADD. BY [Signature]
CHECKED BY [Signature]

P.O.C.
S.W. CORNER
SECTION 31-46-43