

October, A.D., Nineteen Hundred Eighty Six

- Boca Trace -

- A Part Of Cypress Point, A Planned Unit Development -

- Lying In Section Thirty Two, Township Forty Seven South, Range Forty Two East -

Being A Replat Of Portions Of Tracts Fifteen, Sixteen, Seventeen, Eighteen And Twenty Eight, Block Eighty Three, Palm Beach Farms Company's Plat Number Three, Plat Book Two, Pages Four Five Through Fifty Four, Inclusive, Public Records, Palm Beach County, Florida.

SHEET NO. 6
 BOOK 2
 PAGE 33433
 SHEET FOUR OF FOUR

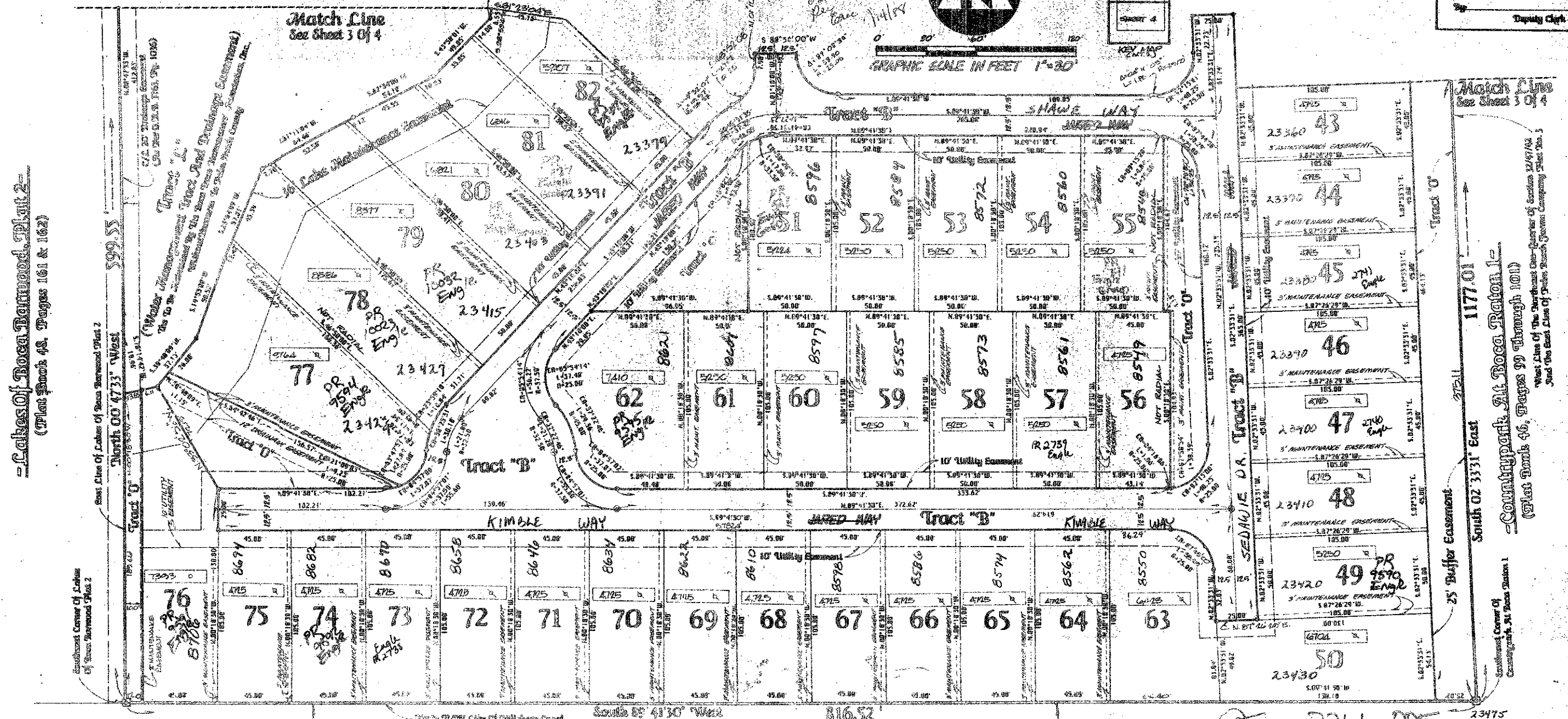
6
 State of Florida)
 County of Palm Beach)
 This Plat was filed for record
 at _____ this _____ day of
 _____, A.D., 1986, and
 duly recorded in Plat Book
 _____ on Page _____ Here
 John B. Duplin,
 Clerk of the Circuit Court.
 By _____
 Deputy Clerk

~~TO BE RECALLED~~
~~THE ADDRESS ONLY~~
 OK
 See Case 11118



GRAPHIC SCALE IN FEET 1"=30'

SHEET 2
 SHEET 3
 SHEET 4



- Closes Of Boca Boulevard, Plat 2 -
 (Plat Book 48, Pages 161 & 162)

Match Line
 See Sheet 3 Of 4
 Match Line
 See Sheet 5 Of 4
 1177.01
 South 02 33.31' East
 - Countrypark At Boca Raton I -
 (Plat Book 46, Pages 99 through 101)
 West Line Of The Northeast Corner Of Section 32/47/82
 And The East Line Of Public Beach System Company Plat No. 5

2266-005
 4725 A INDICATES LOT AREA IN SQUARE FEET

This instrument was prepared by Wm. St. Van Sompson, P.L.L.C.,
 to and for the office of Bench Mark Land Surveying and
 Mapping, Inc., Four Points Centre, 50 South Military Trail,
 Suite 200, West Palm Beach, Florida 33411 (305) 689-2111

BENCH MARK
 land surveying and mapping, inc.
 - Record Plat -
- Boca Trace -
 SHEET NO. 6
 BOOK 2
 PAGE 33433

Hillsboro Canal