

27/36

A PART OF VIA VERDE P.U.D.

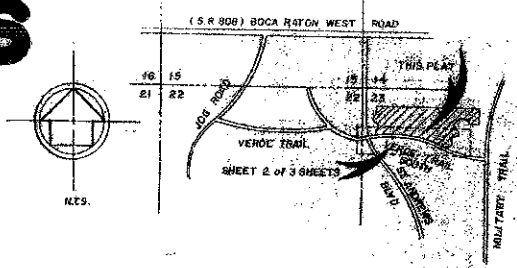
TOWN PLACE TOWNHOMES

BEING A PORTION OF THE NORTHWEST QUARTER (N.W. 1/4) OF SECTION 23, TOWNSHIP 47 SOUTH, RANGE 42 EAST PALM BEACH COUNTY, FLORIDA

Prepared By:
CRAIG A. SMITH & ASSOCIATES
CONSULTING ENGINEERS & SURVEYORS
1000 WEST McNAB ROAD
POMPANO BEACH, FLORIDA
BY: FREDERICK E. CONROD, III, P.L.S. # 2816
FEBRUARY 1987

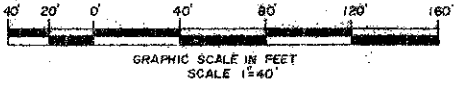
SHEET 2 OF 3 SHEETS

36

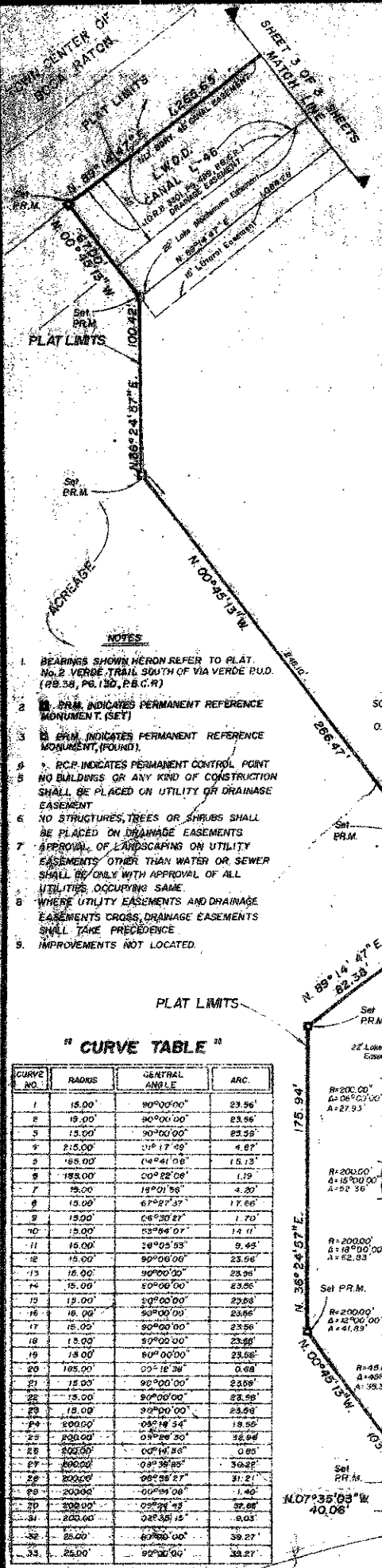


LOCATION MAP

STATE OF FLORIDA
COUNTY OF PALM BEACH
THIS PLAT WAS FILED
RECORD AT _____
DAY OF _____
AND DULY RECORDED IN
NO. _____
AND
BY: JOHN B. DUNKLE, CLERK.



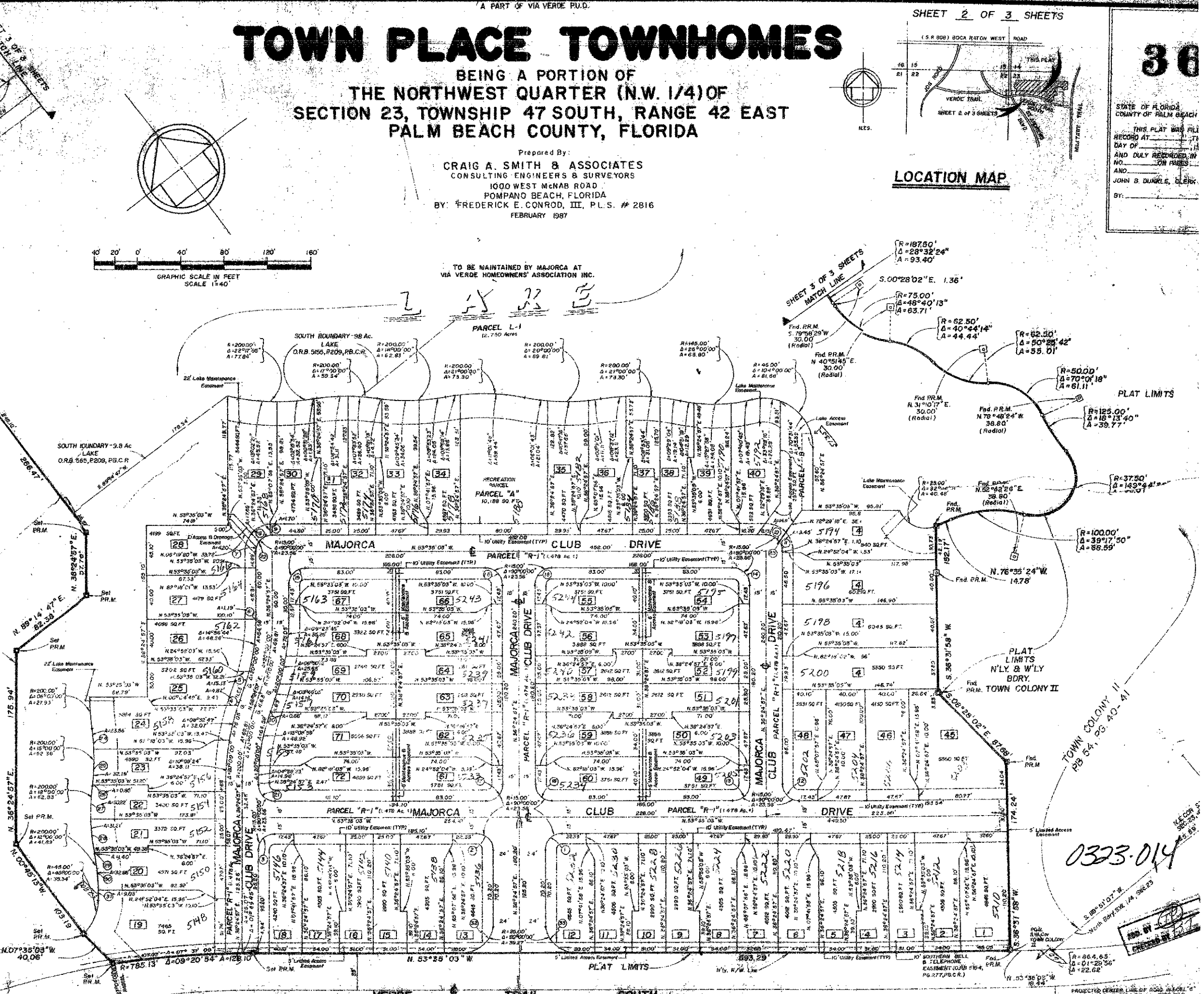
TO BE MAINTAINED BY MAJORCA AT VIA VERDE HOMEOWNERS ASSOCIATION INC.



- NOTES**
- BEARINGS SHOWN HEREON REFER TO PLAT No. 2 VERDE TRAIL SOUTH OF VIA VERDE P.U.D. (P.B. 38, PG. 130, P.B.C.R.)
 - PRM INDICATES PERMANENT REFERENCE MONUMENT (SET)
 - SRM INDICATES PERMANENT REFERENCE MONUMENT (FOUND)
 - PC INDICATES PERMANENT CONTROL POINT NO BUILDINGS OR ANY KIND OF CONSTRUCTION SHALL BE PLACED ON UTILITY OR DRAINAGE EASEMENT
 - NO STRUCTURES, TREES OR SHRUBS SHALL BE PLACED ON DRAINAGE EASEMENTS
 - APPROVAL OF LANDSCAPING ON UTILITY EASEMENTS OTHER THAN WATER OR SEWER SHALL BE ONLY WITH APPROVAL OF ALL UTILITIES OCCURRING SAME
 - WHERE UTILITY EASEMENTS AND DRAINAGE EASEMENTS CROSS, DRAINAGE EASEMENTS SHALL TAKE PRECEDENCE
 - IMPROVEMENTS NOT LOCATED

" CURVE TABLE "

| CURVE NO. | RADIUS | CENTRAL ANGLE | ARC |
|-----------|--------|---------------|--------|
| 1 | 15.00' | 90°00'00" | 23.56' |
| 2 | 15.00' | 90°00'00" | 23.56' |
| 3 | 15.00' | 90°00'00" | 23.56' |
| 4 | 15.00' | 90°00'00" | 23.56' |
| 5 | 15.00' | 90°00'00" | 23.56' |
| 6 | 15.00' | 90°00'00" | 23.56' |
| 7 | 15.00' | 90°00'00" | 23.56' |
| 8 | 15.00' | 90°00'00" | 23.56' |
| 9 | 15.00' | 90°00'00" | 23.56' |
| 10 | 15.00' | 90°00'00" | 23.56' |
| 11 | 15.00' | 90°00'00" | 23.56' |
| 12 | 15.00' | 90°00'00" | 23.56' |
| 13 | 15.00' | 90°00'00" | 23.56' |
| 14 | 15.00' | 90°00'00" | 23.56' |
| 15 | 15.00' | 90°00'00" | 23.56' |
| 16 | 15.00' | 90°00'00" | 23.56' |
| 17 | 15.00' | 90°00'00" | 23.56' |
| 18 | 15.00' | 90°00'00" | 23.56' |
| 19 | 15.00' | 90°00'00" | 23.56' |
| 20 | 15.00' | 90°00'00" | 23.56' |
| 21 | 15.00' | 90°00'00" | 23.56' |
| 22 | 15.00' | 90°00'00" | 23.56' |
| 23 | 15.00' | 90°00'00" | 23.56' |
| 24 | 15.00' | 90°00'00" | 23.56' |
| 25 | 15.00' | 90°00'00" | 23.56' |
| 26 | 15.00' | 90°00'00" | 23.56' |
| 27 | 15.00' | 90°00'00" | 23.56' |
| 28 | 15.00' | 90°00'00" | 23.56' |
| 29 | 15.00' | 90°00'00" | 23.56' |
| 30 | 15.00' | 90°00'00" | 23.56' |
| 31 | 15.00' | 90°00'00" | 23.56' |
| 32 | 15.00' | 90°00'00" | 23.56' |
| 33 | 15.00' | 90°00'00" | 23.56' |



PREPARED BY: **CRAIG A. SMITH & ASSOCIATES**
CONSULTING ENGINEERS & SURVEYORS
1000 WEST McNAB ROAD
POMPANO BEACH, FLORIDA
DATE: FEBRUARY 1987

0323-014

RECORDED BY: [Signature]

PROJECTED CENTER LINE OF ROAD AND BOUNDARY OF TOWN PLACE PHASE I OF VIA VERDE P.U.D. (P.B. 38, PG. 130, P.B.C.R.)