

THE POLO CLUB OPEN SPACE PLAT THREE

PART OF THE POLO CLUB P.U.D.

SITUATE IN SECTION 35, TOWNSHIP 46 SOUTH, RANGE 42 EAST
PALM BEACH COUNTY, FLORIDA.

BEING A REPLAT OF A PORTION OF TRACTS II & III OF "THE POLO CLUB PLAT II"

1987

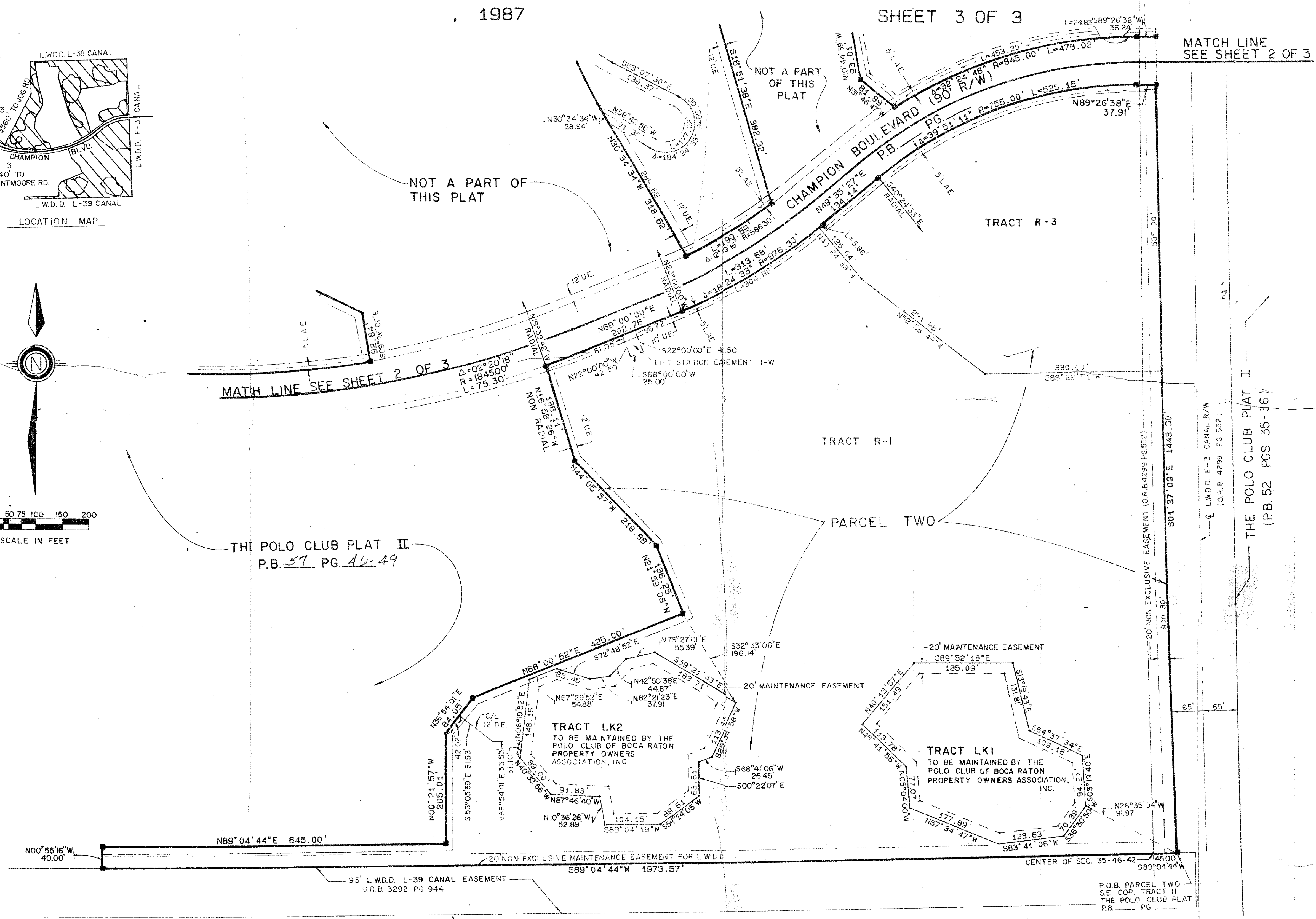
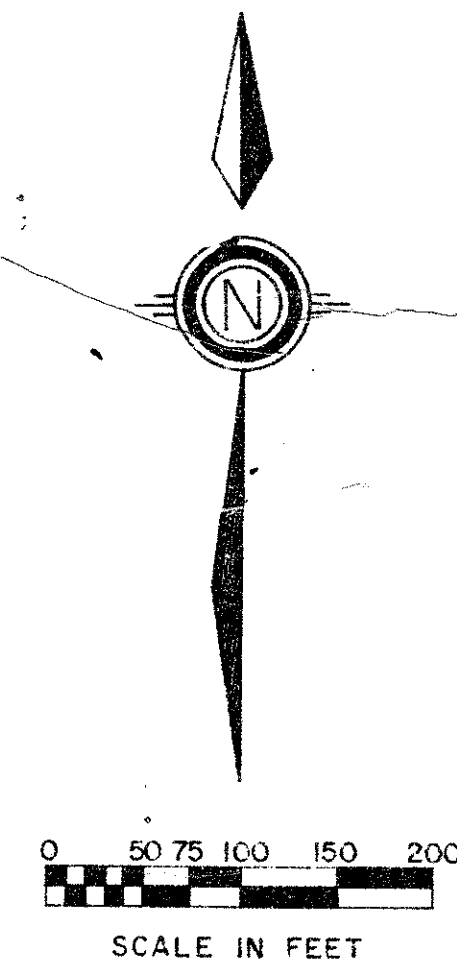
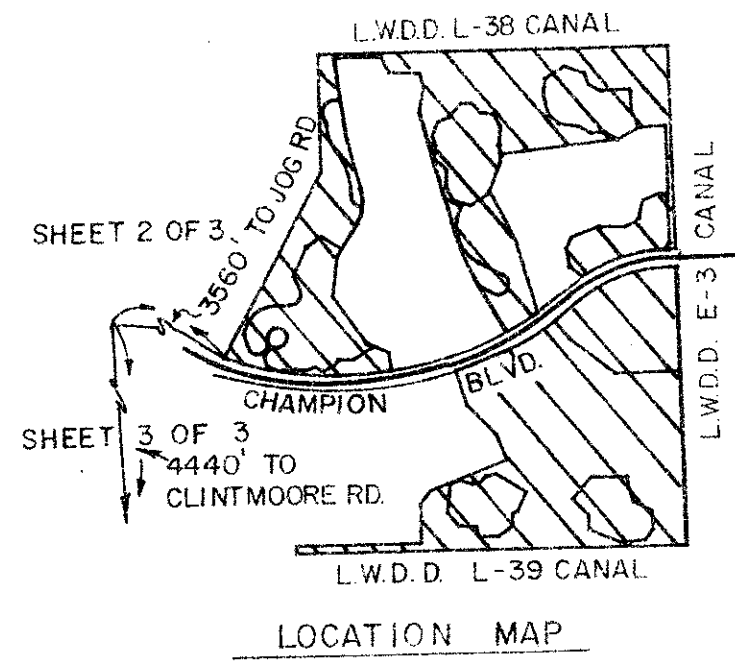
SHEET 3 OF 3

52

STATE OF FLORIDA
COUNTY OF PALM BEACH

THIS PLAT WAS FILED FOR
RECORD THIS _____ DAY OF _____
AD, 1987 AND DULY RECORDED
IN PLAT BOOK _____ ON PAGES
_____ AND _____

JOHN B. DUNKLE, CLERK
BY: _____, D.C.



The Polo Club Open Space
BOOK 57 B
PAGE 31
Polo Club PUD
TAZ 602

THE POLO CLUB PLAT II
P.B. 57 PG. 40-49

MATCH LINE
SEE SHEET 2 OF 3

THE POLO CLUB PLAT I
(P.B. 52 PGS 35-36)

0436-301
57/52

Meridian Surveying and mapping inc.		2000 LOMBARD STREET WEST PALM BEACH, FL	
DRAWN	H.C.	DATE	FEB. 1987
CHECKED	M.A.M.	SCALE	1" = 100'
PLATTING NO.	86-P-126	THE POLO CLUB OPEN SPACE PLAT THREE PART OF THE POLO CLUB P.U.D.	