

# WATERFORD

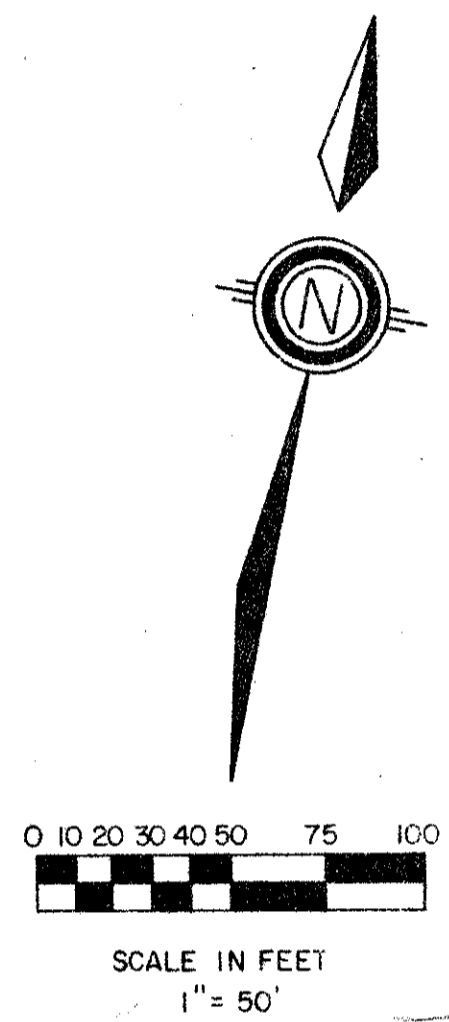
PART OF THE POLO CLUB P.U.D.  
BEING A REPLAT OF A PORTION OF TRACT II, "THE POLO CLUB PLAT II"  
SITUATE IN SECTION 35, TOWNSHIP 46 SOUTH, RANGE 42 EAST  
PALM BEACH COUNTY, FLORIDA

1987 SHEET 2 OF 2

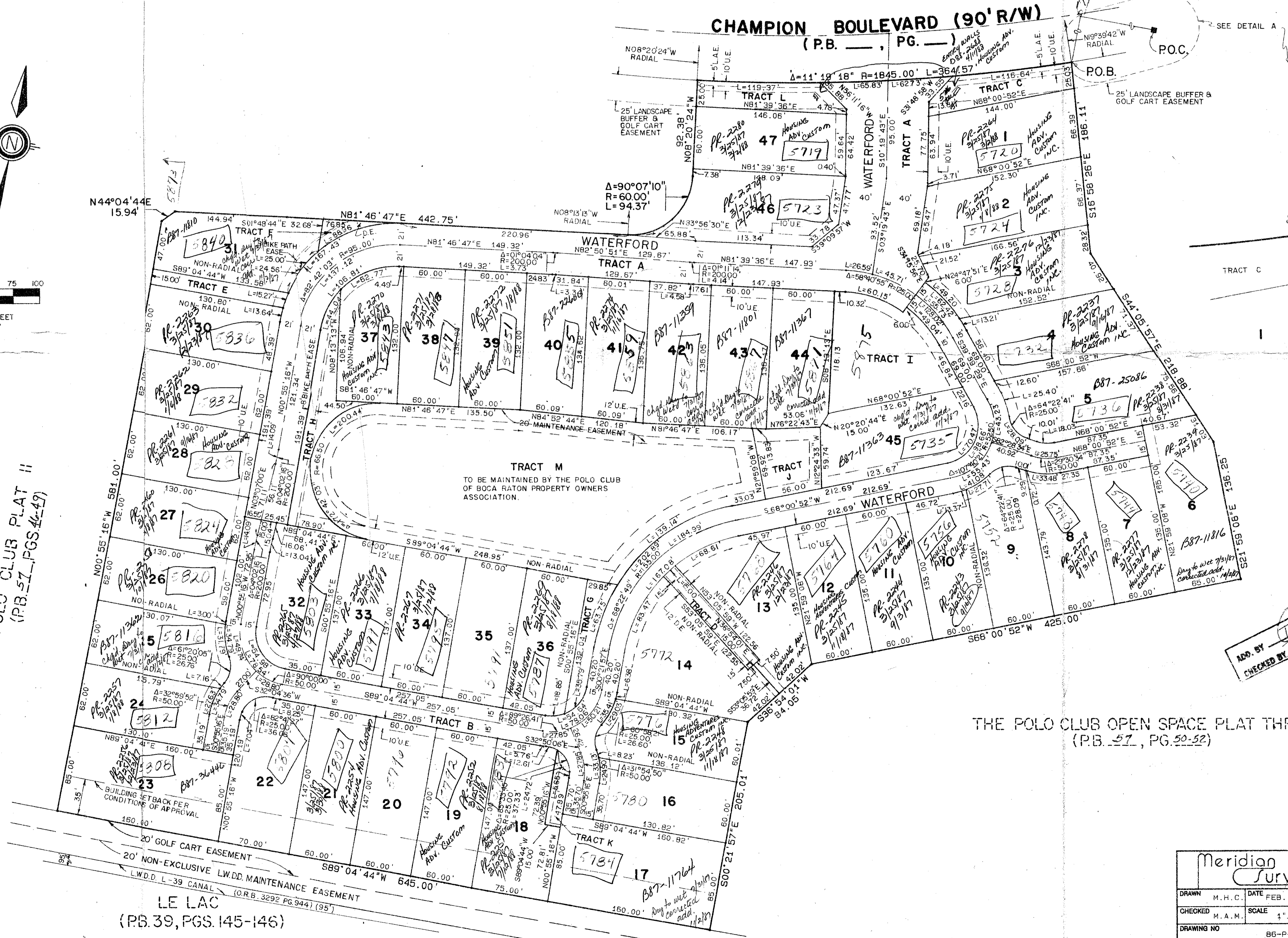
STATE OF FLORIDA  
COUNTY OF PALM BEACH

THIS PLAT WAS FILED FOR  
RECORD AT \_\_\_\_\_  
THIS \_\_\_\_\_ DAY OF \_\_\_\_\_  
AD, 1987 AND DULY RECORDED  
IN PLAT BOOK \_\_\_\_\_ ON PAGES  
\_\_\_\_\_ AND \_\_\_\_\_

JOHN B. DUNKLE, CLERK  
BY: \_\_\_\_\_, D.C.



THE POLO CLUB PLAT II  
(P.B. 57, PGS. 44-49)



ADD. BY \_\_\_\_\_  
CHECKED BY \_\_\_\_\_

Ret. 84-71

THE POLO CLUB OPEN SPACE PLAT THREE  
(P.B. 57, PG. 50-52)

043630030

57/54

Meridian Surveying and mapping inc. WEST PALM BEACH, FLORIDA

|             |          |       |           |
|-------------|----------|-------|-----------|
| DRAWN       | M.H.C.   | DATE  | FEB. 1987 |
| CHECKED     | M.A.M.   | SCALE | 1" = 50'  |
| DRAWING NO. | 86-P-111 |       |           |

WATERFORD  
PART OF  
THE POLO CLUB P.U.D.

3546/42  
SECTION 35  
PLAT 57  
PUD NAME  
SE  
PUD NAME  
TAX 54  
220B  
3941A  
Polo Club PUD  
TAX 54  
1692