

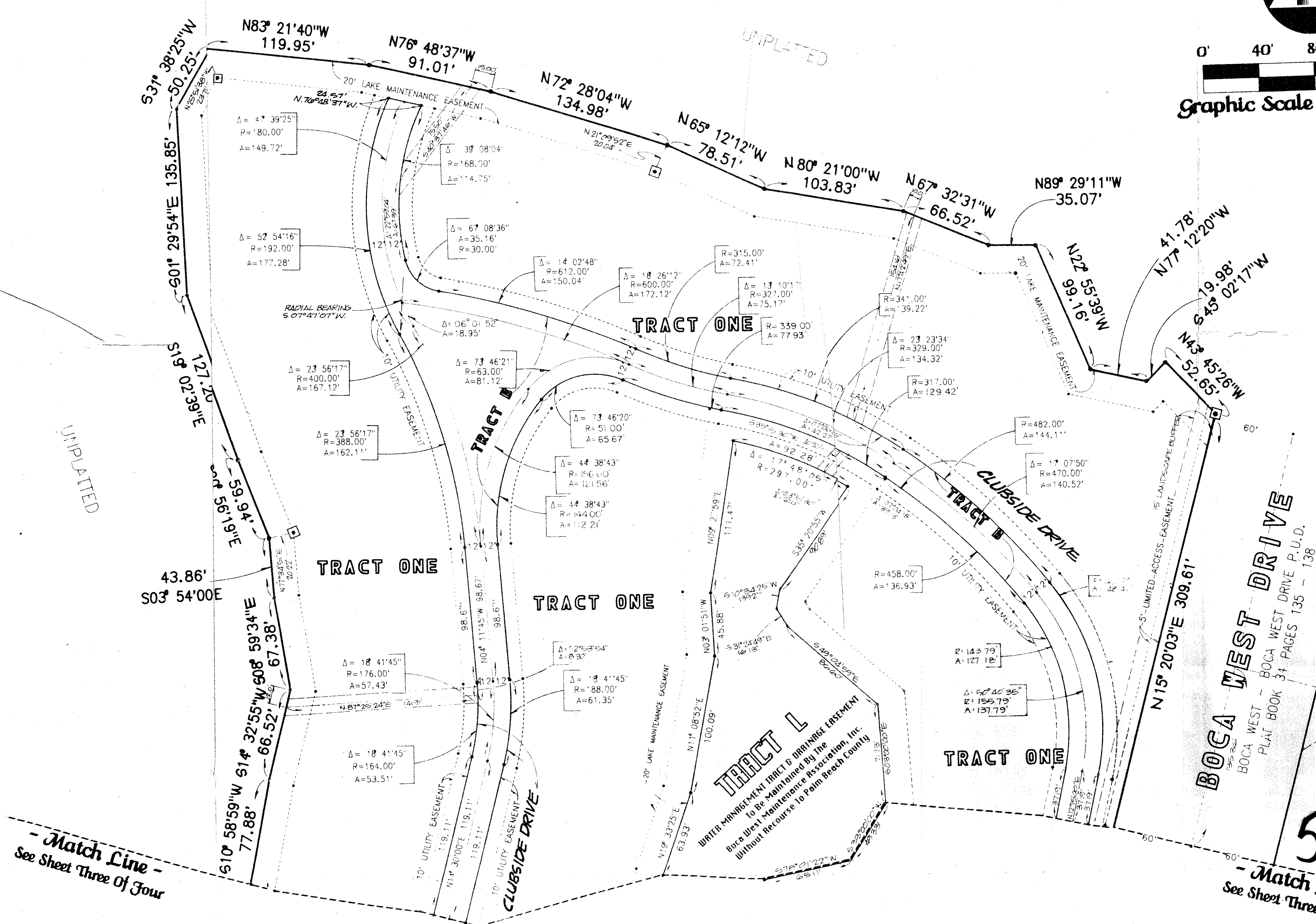
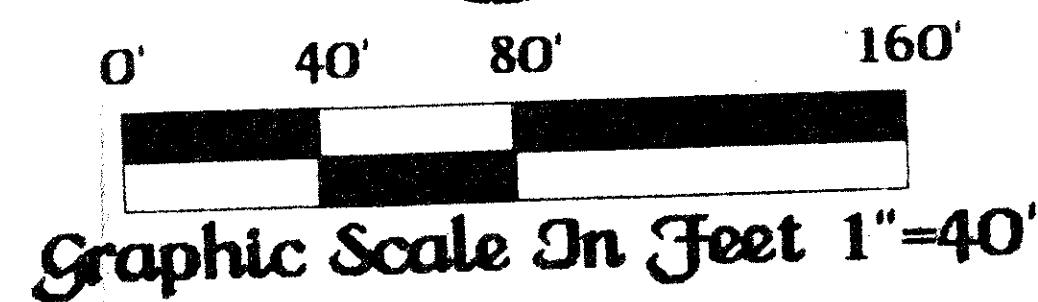
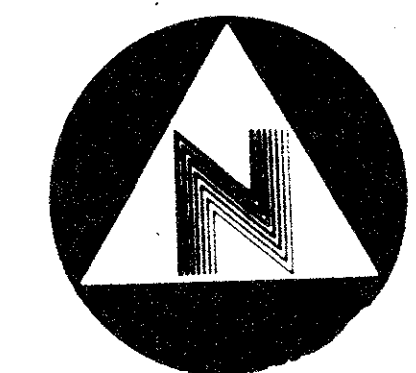
- Clubside At Boca West -

February, A. D., Nineteen Hundred Eighty Seven

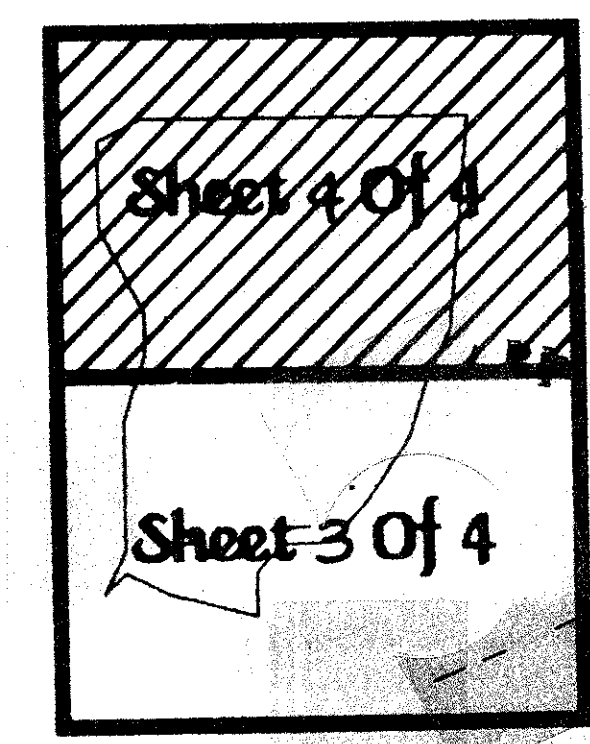
- A Part Of Boca West, A Planned Unit Development -
Lying In Sections 15 & 16, Township 47 South, Range 42 East, Palm Beach County, Florida

Sheet Four Of Four

State of Florida)
County of Palm Beach)
This Plat was filed for record at _____ this _____ day of _____, A. D., 1987, and duly recorded in 'Plat Book _____ on 'Pages _____ thru _____.
John B. Dunkle,
Clerk of the Circuit Court.
By: _____
Deputy Clerk



- Legend :**
- Denotes a permanent reference monument (P.R.M.)
 - Denotes a permanent control point (P.C.P.)
 - Denotes a drainage easement.
 - Denotes a utility easement.
 - Denotes a limited access easement.



This instrument was prepared by Wm. D. Uon Compen, R.L.S., in and for the offices of Bench Mark Land Surveying & Mapping, Inc., 4152 West Blue Heron Boulevard, Suite 121, Riviera Beach, Florida, 33404. Phone: (305) 848-2102

BENCH MARK
land surveying and mapping, inc.

- Record Plat -
Clubside At Boca West

OWN	CHKD	DATE	BY
SCALE	SIZ	SHEET	OF

SUBDIVISION *Clubside of Boca West*
BOOK *57* PAGE *88*
FLOOD ZONE *0* FLOOD MAP # *2308*
QUAD # *15038* ZONING # *AR*
SE PUD # *16053* ZIP CODE *33404*
PUD NAME

- Match Line -
See Sheet Three Of Four

57/8
- Match Line -
See Sheet Three Of Four