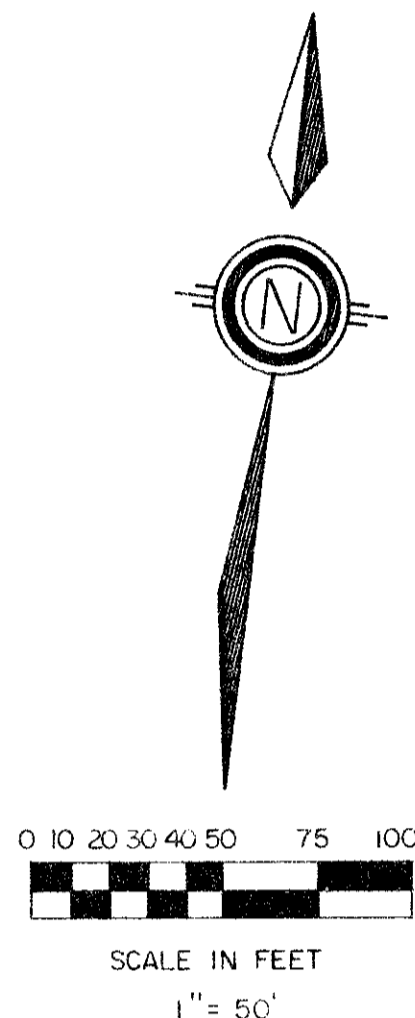


ROYAL PALM COVE
PART OF THE POLO CLUB P.U.D.
BEING A REPLAT OF A PORTION OF TRACT III, "THE POLO CLUB PLAT II"
SITUATE IN SECTION 35, TOWNSHIP 46 SOUTH, RANGE 42 EAST
PALM BEACH COUNTY, FLORIDA

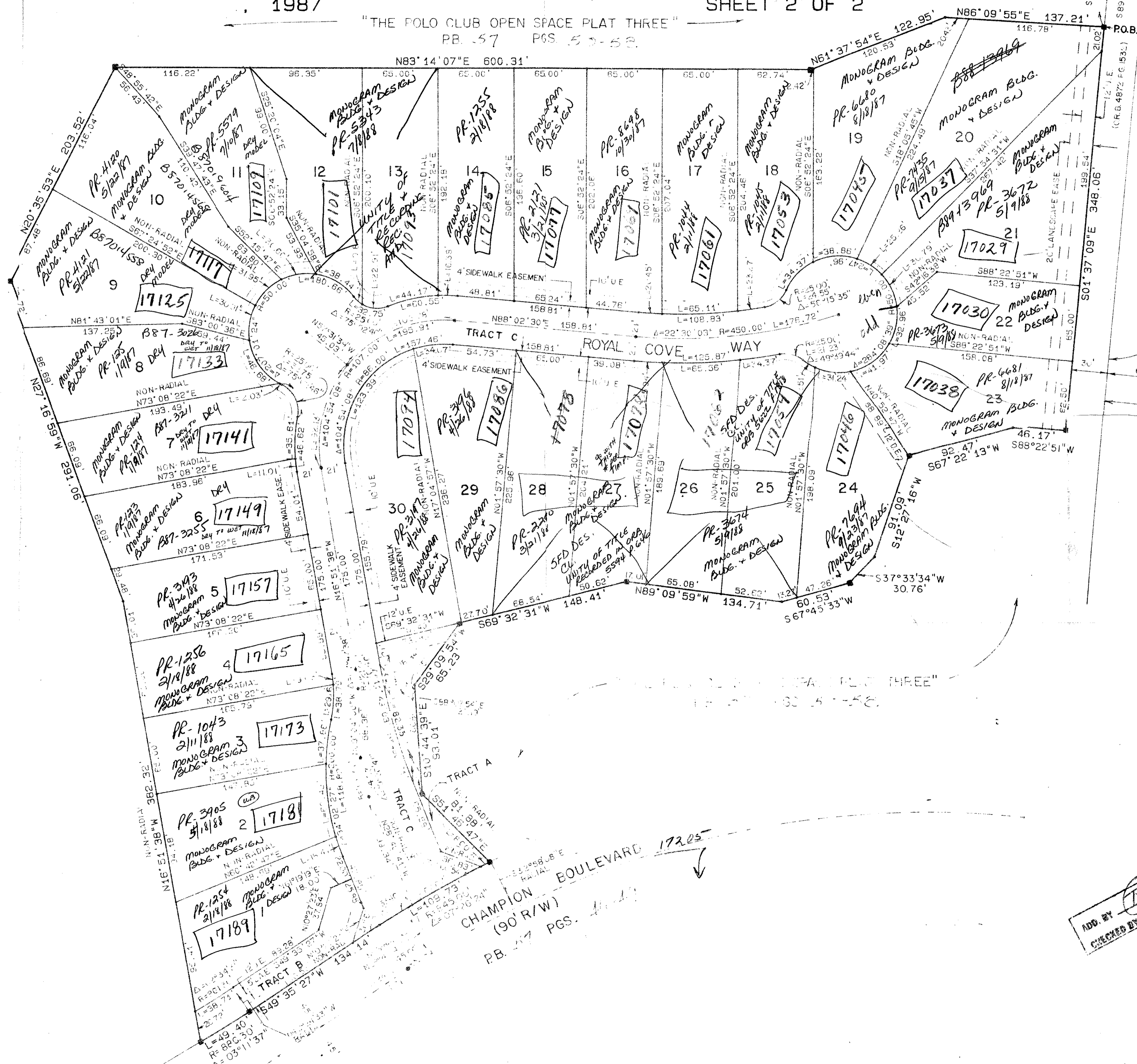
1987 SHEET 2 OF 2

"THE POLO CLUB OPEN SPACE PLAT THREE"
PB. 57 PGS. 52-52

STATE OF FLORIDA
COUNTY OF PALM BEACH
THIS PLAT WAS FILED FOR
RECORD AT _____
THIS _____ DAY OF _____
AD, 1987 AND DULY RECORDED
IN PLAT BOOK _____ ON PAGES
_____ AND _____
JOHN B. DUNKLE, CLERK
BY: _____, D.C.



"THE POLO CLUB OPEN SPACE
PLAT THREE"
PB. 57 PGS. 52-52



SUBDIVISION: Royal Palm Cove
BOOK: 57 PAGE: 90
FLOOD ZONE: FLOOD MAP # 2208
CHAS. # 33431
SE PUD
TOWN NAME: Polo Club-Plat II
TAZ 602

ADD BY: [Signature]
CHECKED BY: [Signature]

57/90
0436-018

Meridian Surveying and Mapping Inc. WEST PALM BEACH, FLORIDA

DRAWN	MHC	DATE	N 1987
CHECKED	MAM	SCALE	1" = 50'
DRAWING NO.	86-P-118	ROYAL PALM COVE PART OF THE POLO CLUB P.U.D.	