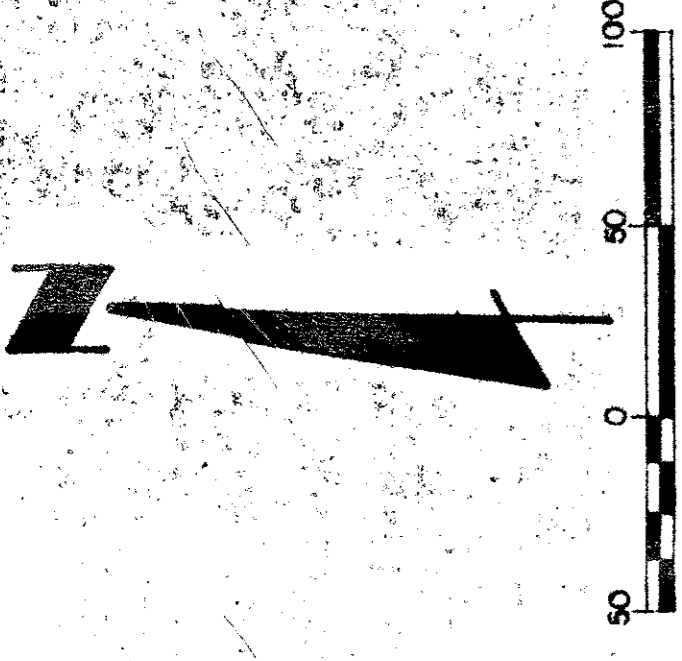


STATE OF FLORIDA
COUNTY OF PALM BEACH
THIS PLAN WAS FILED
FOR RECORD AT _____ M.
THIS _____ DAY OF _____ 1987.
AND DULY RECORDED IN
PLAT BOOK NO. _____ ON
PAGE _____
BY: JOHN B. DUNKLE
CLERK CIRCUIT COURT
D.C.



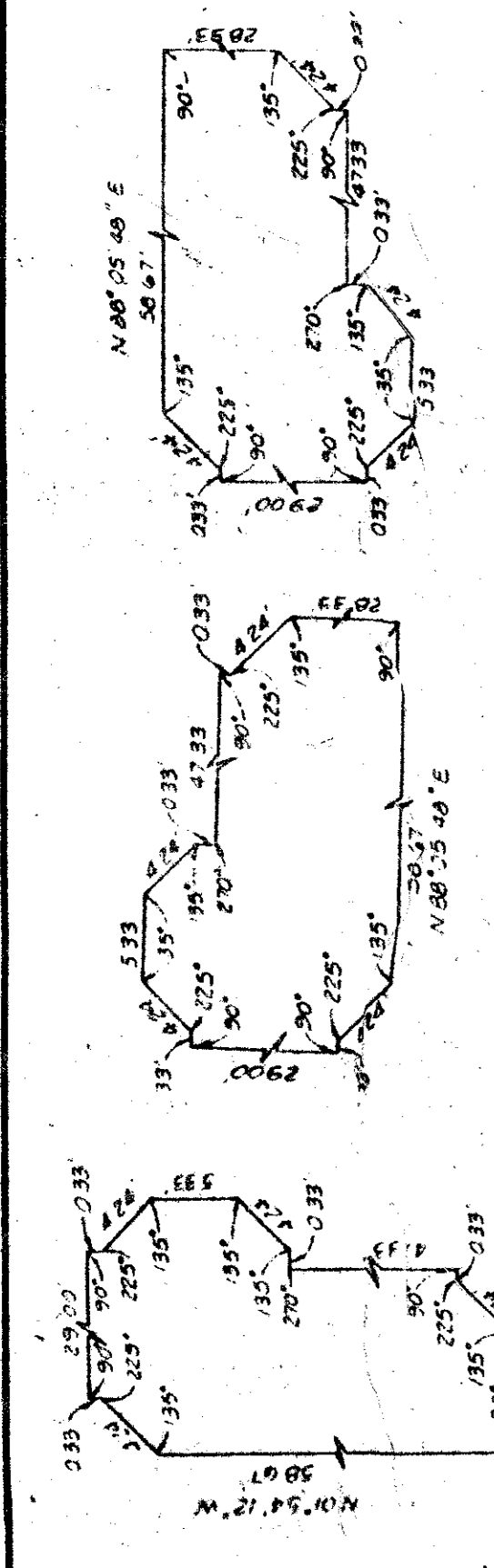
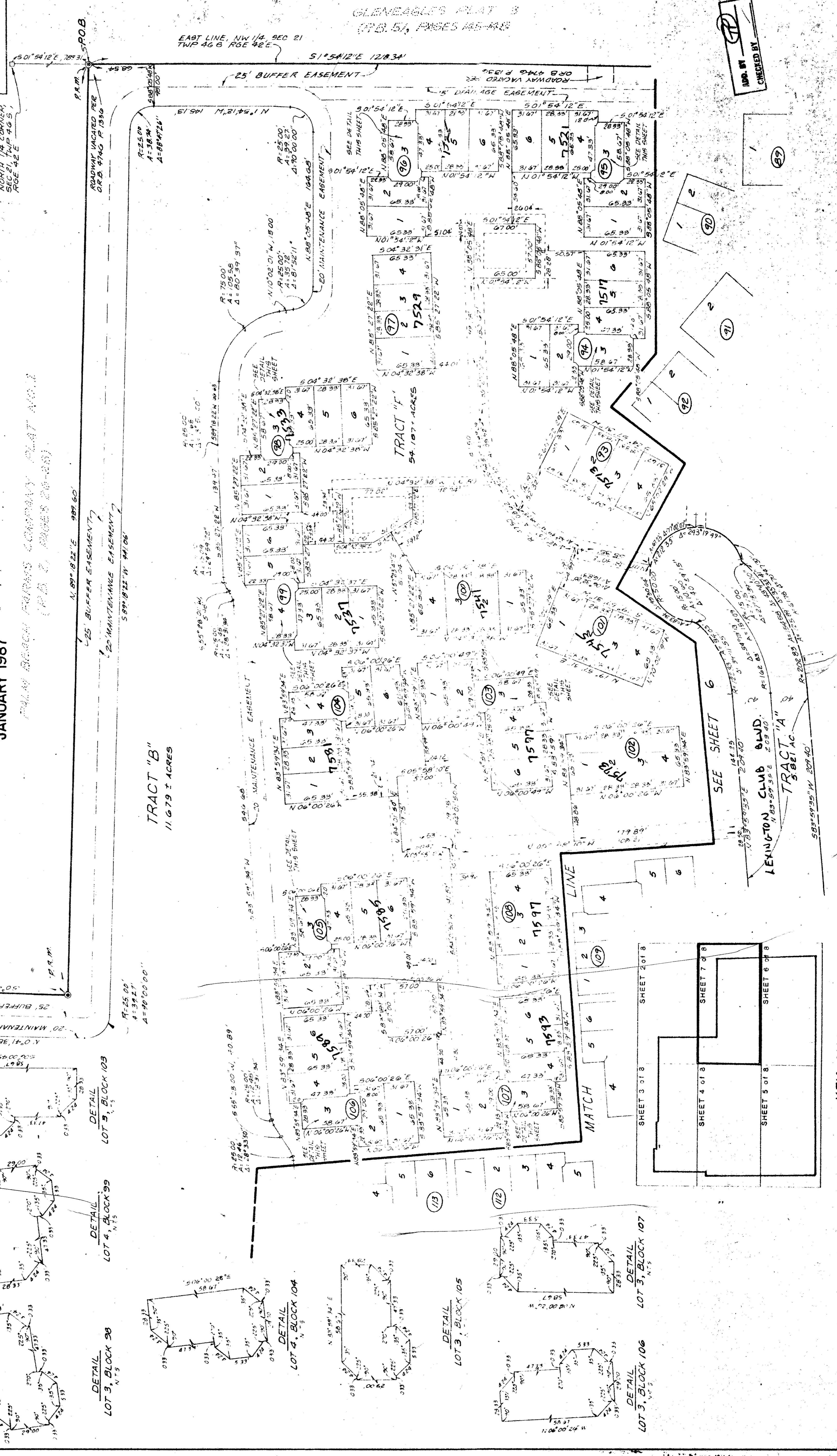
THE LEXINGTON CLUB

ALL OF HAMILTON PLACE - P.U.D.
A RESUBDIVISION OF PINECREST PARK, P.B.4 PAGE 11 AND A
PORTION OF PALM BEACH FARMS COMPANY PLAT NO. I.P.B. 2
PAGES 26 THROUGH 28, PALM BEACH COUNTY RECORDS,
LYING IN SECTION 21 TOWNSHIP 46 SOUTH, RANGE 42 EAST
PALM BEACH COUNTY, FLORIDA
IN 8 SHEETS
SHEET NO. 7

Post, Buckley, Schuh & Jernigan, Inc.
CONSULTING ENGINEERS PLANNERS and SURVEYORS



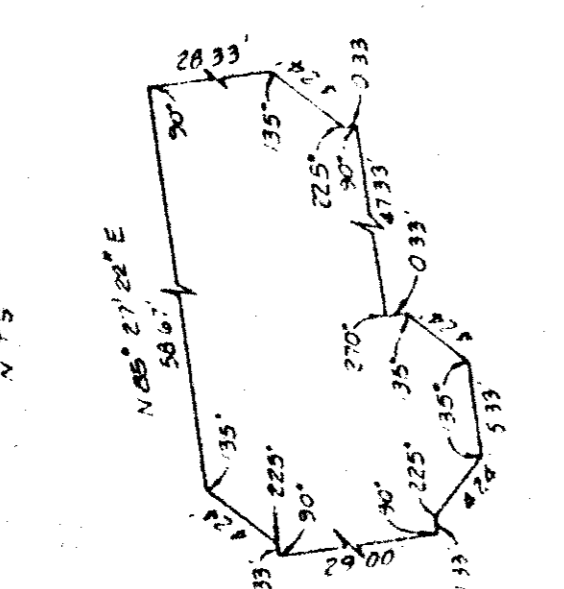
JANUARY 1987



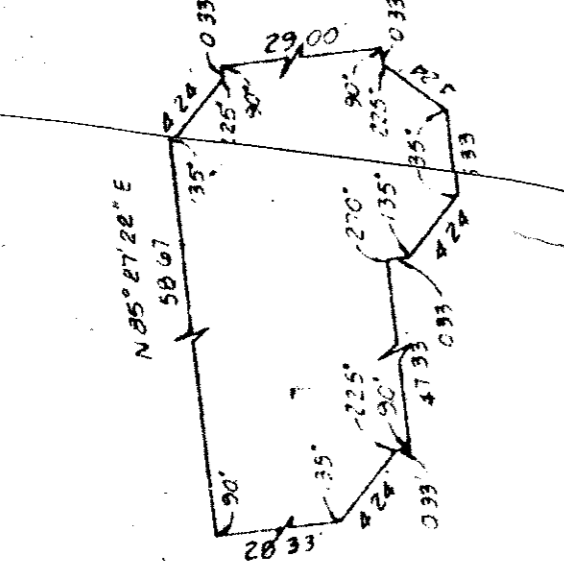
DETAIL
LOT 3, BLOCK 94

DETAIL
LOT 3, BLOCK 95

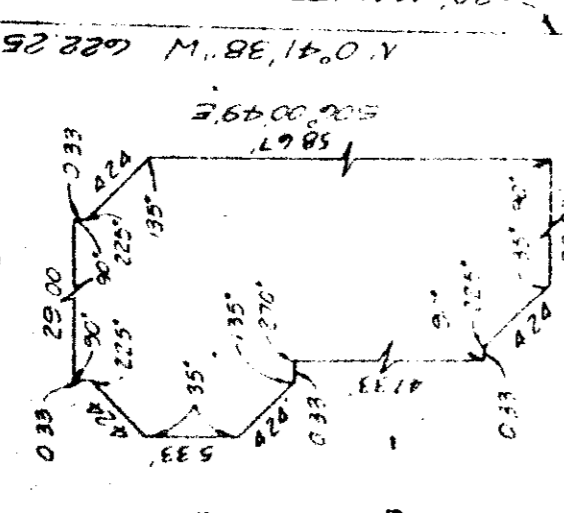
DETAIL
LOT 3, BLOCK 96



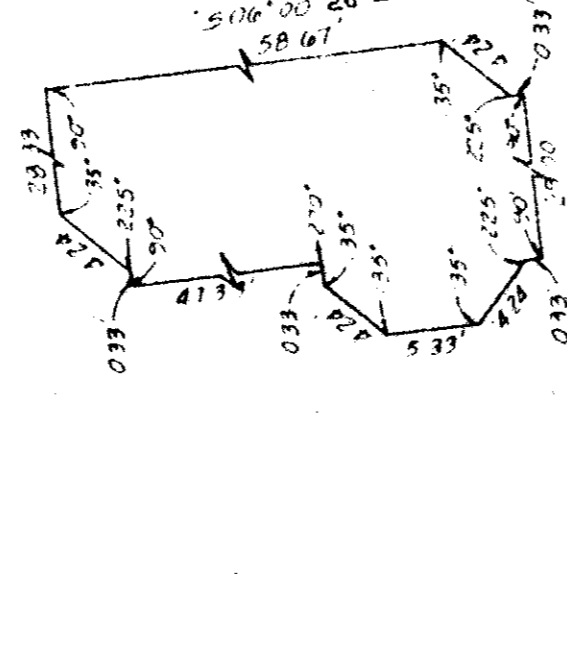
DETAIL
LOT 3, BLOCK 98



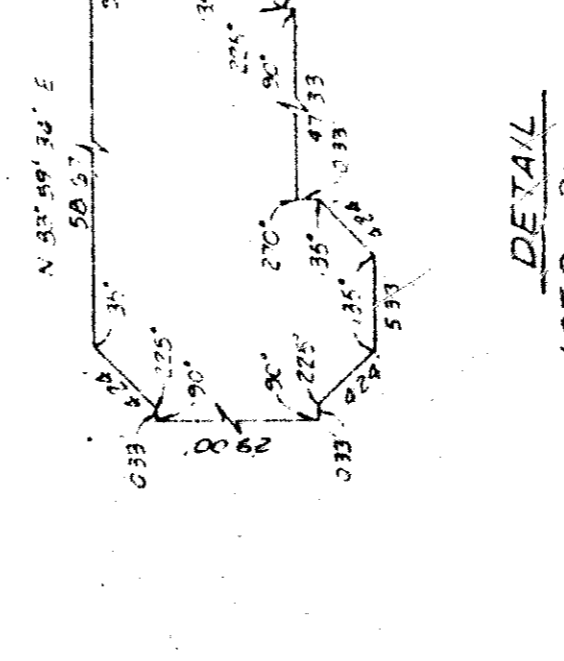
DETAIL
LOT 4, BLOCK 99



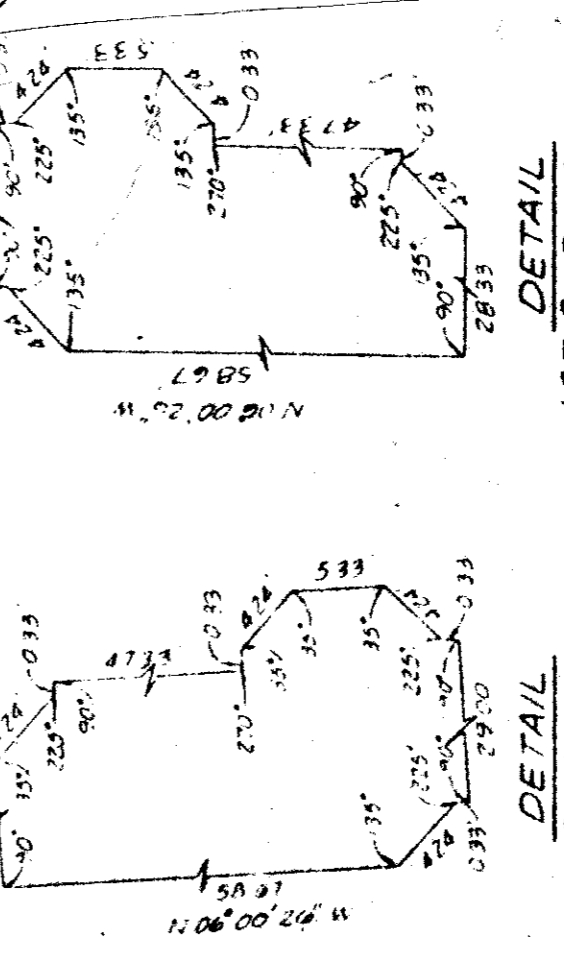
DETAIL
LOT 5, BLOCK 103



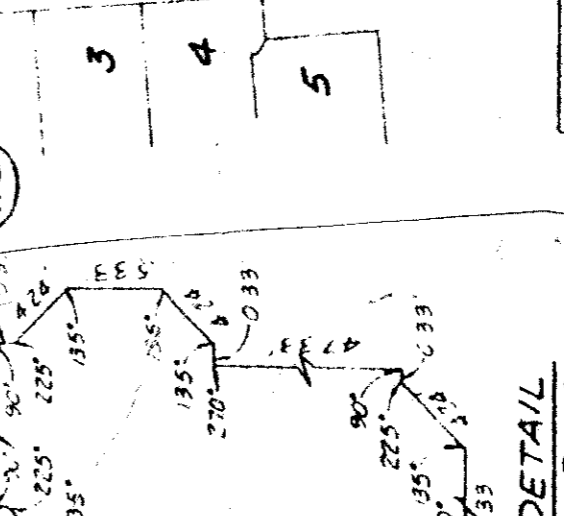
DETAIL
LOT 4, BLOCK 104



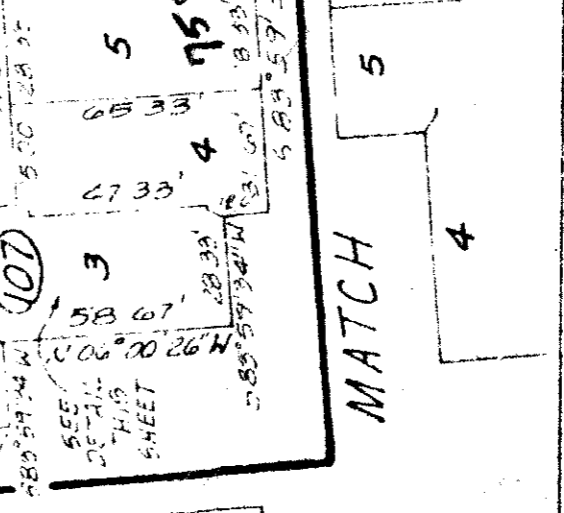
DETAIL
LOT 3, BLOCK 105



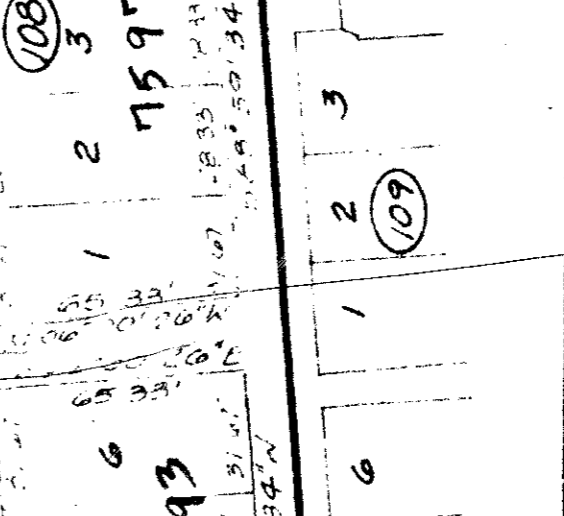
DETAIL
LOT 3, BLOCK 106



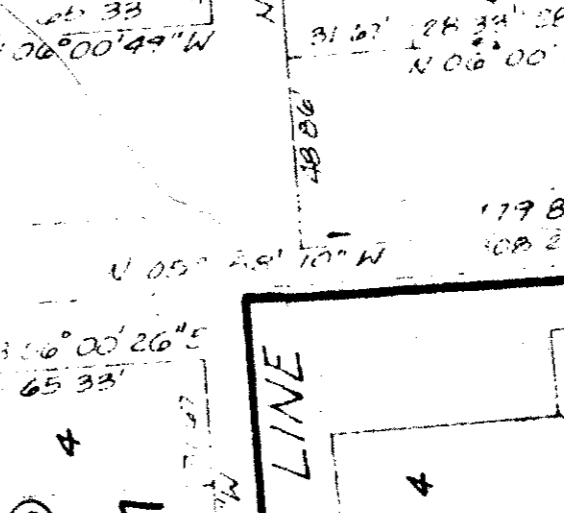
DETAIL
LOT 3, BLOCK 107



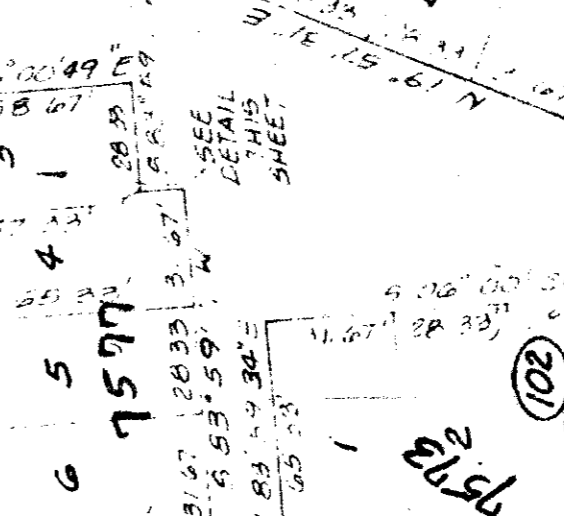
DETAIL
LOT 5, BLOCK 99



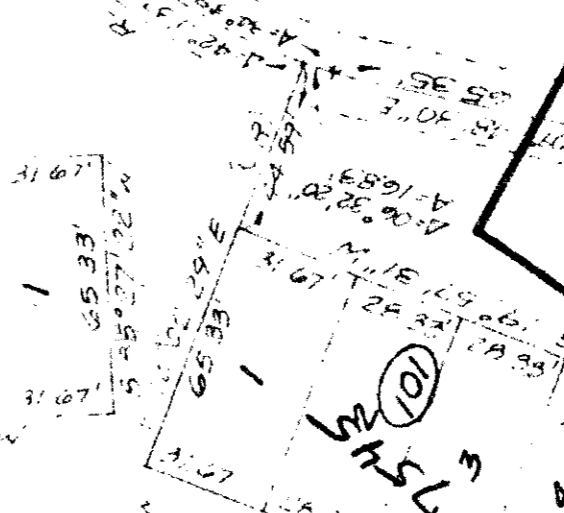
DETAIL
LOT 5, BLOCK 96



DETAIL
LOT 5, BLOCK 103



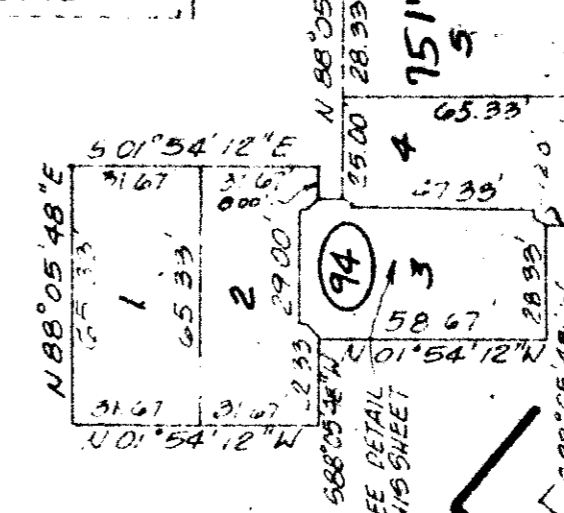
DETAIL
LOT 4, BLOCK 99



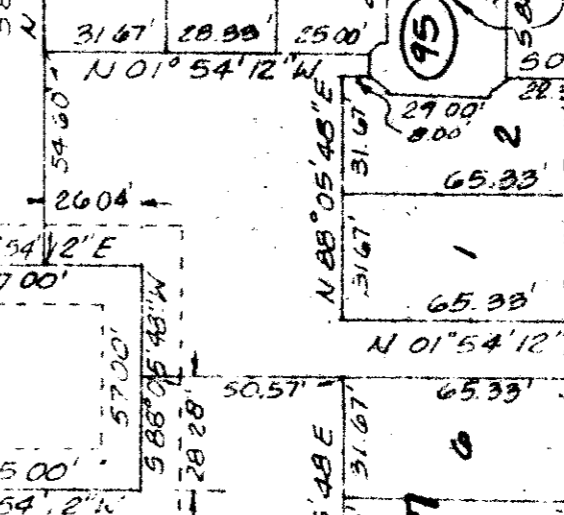
DETAIL
LOT 3, BLOCK 94



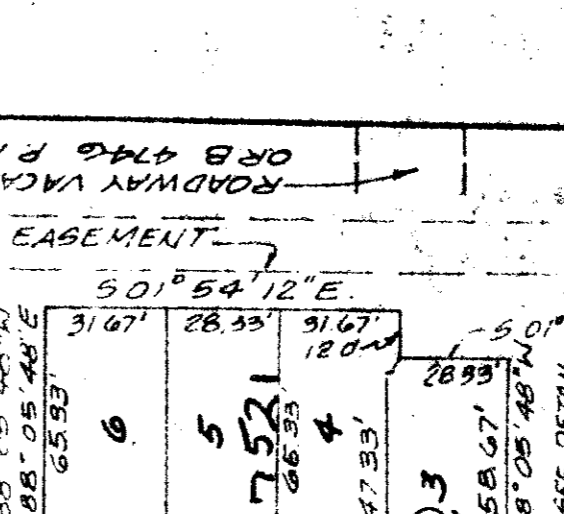
DETAIL
LOT 3, BLOCK 95



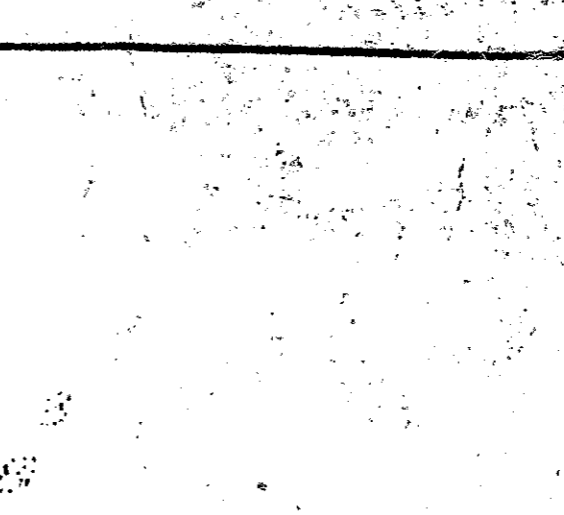
DETAIL
LOT 3, BLOCK 96



DETAIL
LOT 4, BLOCK 99



DETAIL
LOT 5, BLOCK 103



DETAIL
LOT 5, BLOCK 99

BOOK PAGE
FLOOD ZONE FLOOD MAP
QUAD ZONING
SUDD NAME
SUDD ZIP CODE

DRAWING NUMBER

DRAWING NUMBER

DRAWING NUMBER

DRAWING NUMBER
57/98