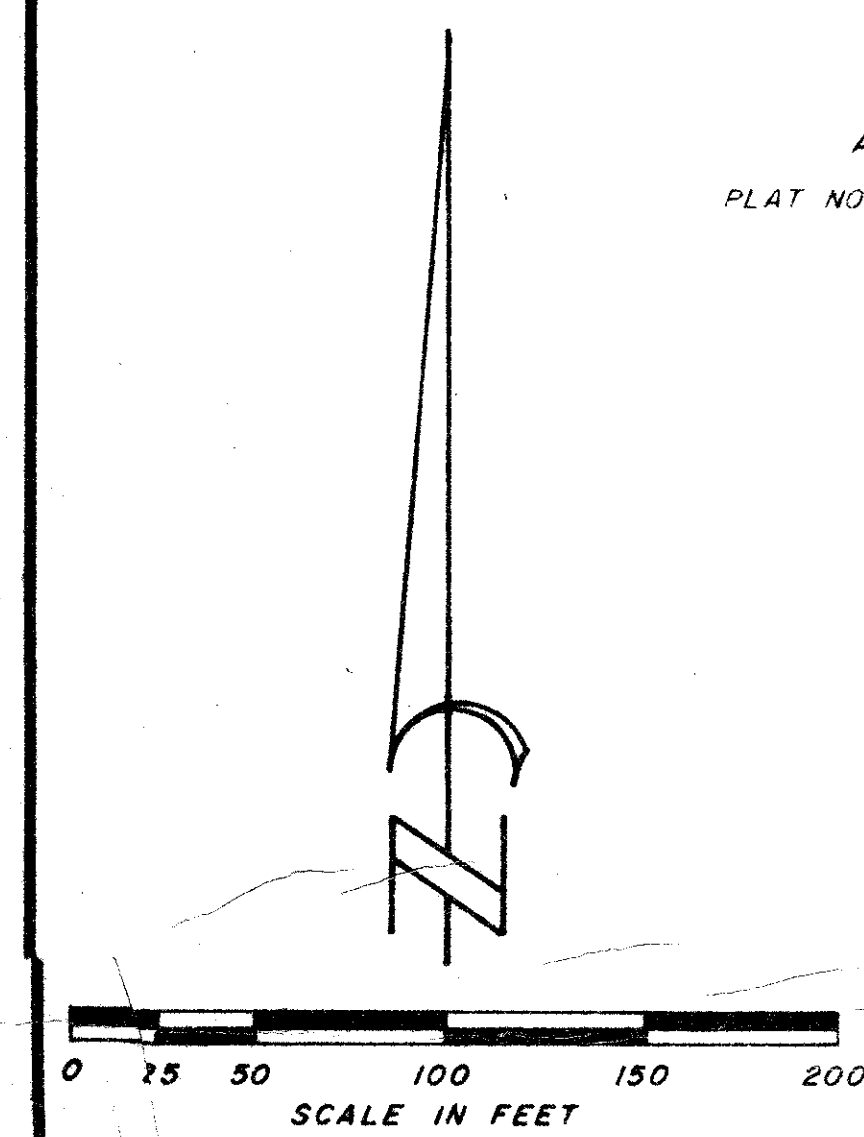


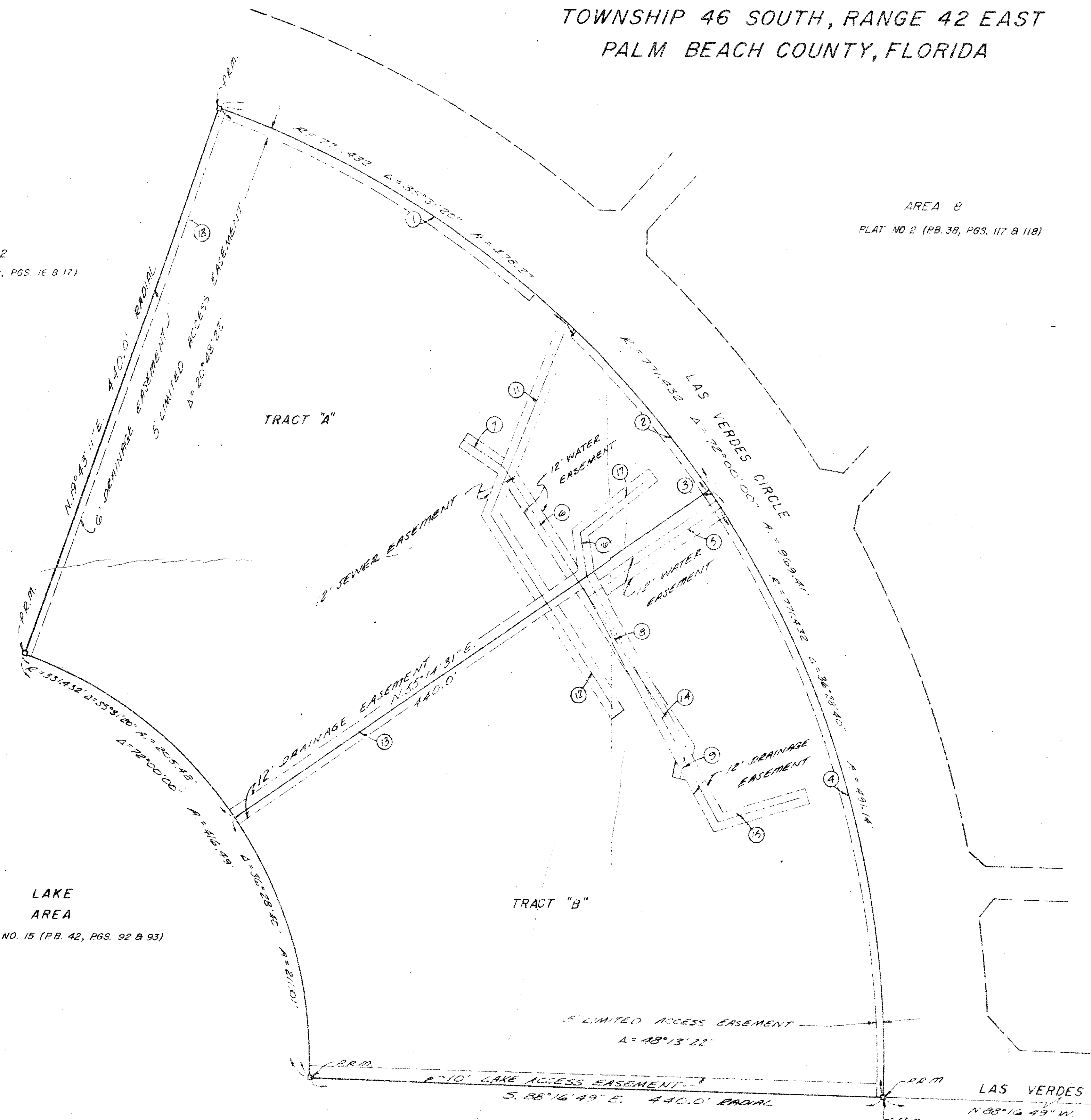
PART OF A PLANNED UNIT DEVELOPMENT
KINGS POINT PLAT NO. FOURTEEN

A PART OF THE S.E. 1/4 OF SECTION 23
 TOWNSHIP 46 SOUTH, RANGE 42 EAST
 PALM BEACH COUNTY, FLORIDA



AREA 12
 PLAT NO. 6 (P.B. 39, PGS. 16 & 17)

AREA 8
 PLAT NO. 2 (P.B. 38, PGS. 117 & 118)



CURVE DATA FOR EASEMENTS

CURVE NO.	Δ	RADIUS	ARC
1	23°21'23"	771.432'	314.47'
2	12°09'57"	771.432'	163.80'
3	1°10'21"	771.432'	15.97'
4	35°18'19"	771.432'	475.35'

WATER EASEMENTS

EASE NO.	BEARING	DISTANCE
5	S.56°21'52" W.	123.0'
6	N.33°31'08" W.	116.60'
7	N.56°05'08" W.	47.05'
8	S.56°33'08" E.	136.84'
9	S.11°24'52" E.	23.02'

SEWER EASEMENTS

EASE NO.	BEARING	DISTANCE
11	N.22°21'07" E.	155.93'
12	N.32°47'34" W.	180.55'

DRAINAGE EASEMENTS

EASE NO.	BEARING	DISTANCE
13	N.55°14'31" E.	658.43'
14	S.28°49'43" E.	213.30'
15	N.73°43'58" E.	71.0'
16	N.13°07'17" W.	32.10'
17	N.52°41'09" E.	71.0'
18	N.19°43'11" E.	440.0'

LAKE AREA
 PLAT NO. 15 (P.B. 42, PGS. 92 & 93)

AREA 9
 PLAT NO. 12 (P.B. 54, PGS. 50 & 51)

33140142
 SUBDIVISION Kings Point #14
 BOOK 57
 PAGE 110
 FLOOD MAP #2008
 ZONING #37
 ZIP CODE 33445
 PUD NAME

EAST LINE OF SECTION 23



PREPARED BY:
 E. BRETT CULPEPPER
 C F S AND ASSOCIATES, INC.

CONSULTING ENGINEERS
 FT. PIERCE, FLORIDA

Kings Point #14
 (SHEET 2 OF 2)

0263-011

57/111