

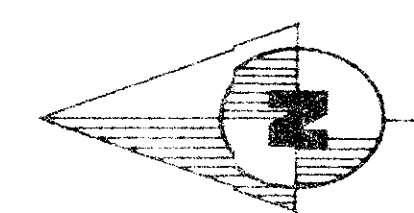
OAK TREE VILLAS

OF PALM BEACH POLO AND COUNTRY CLUB WELLINGTON P.U.D.

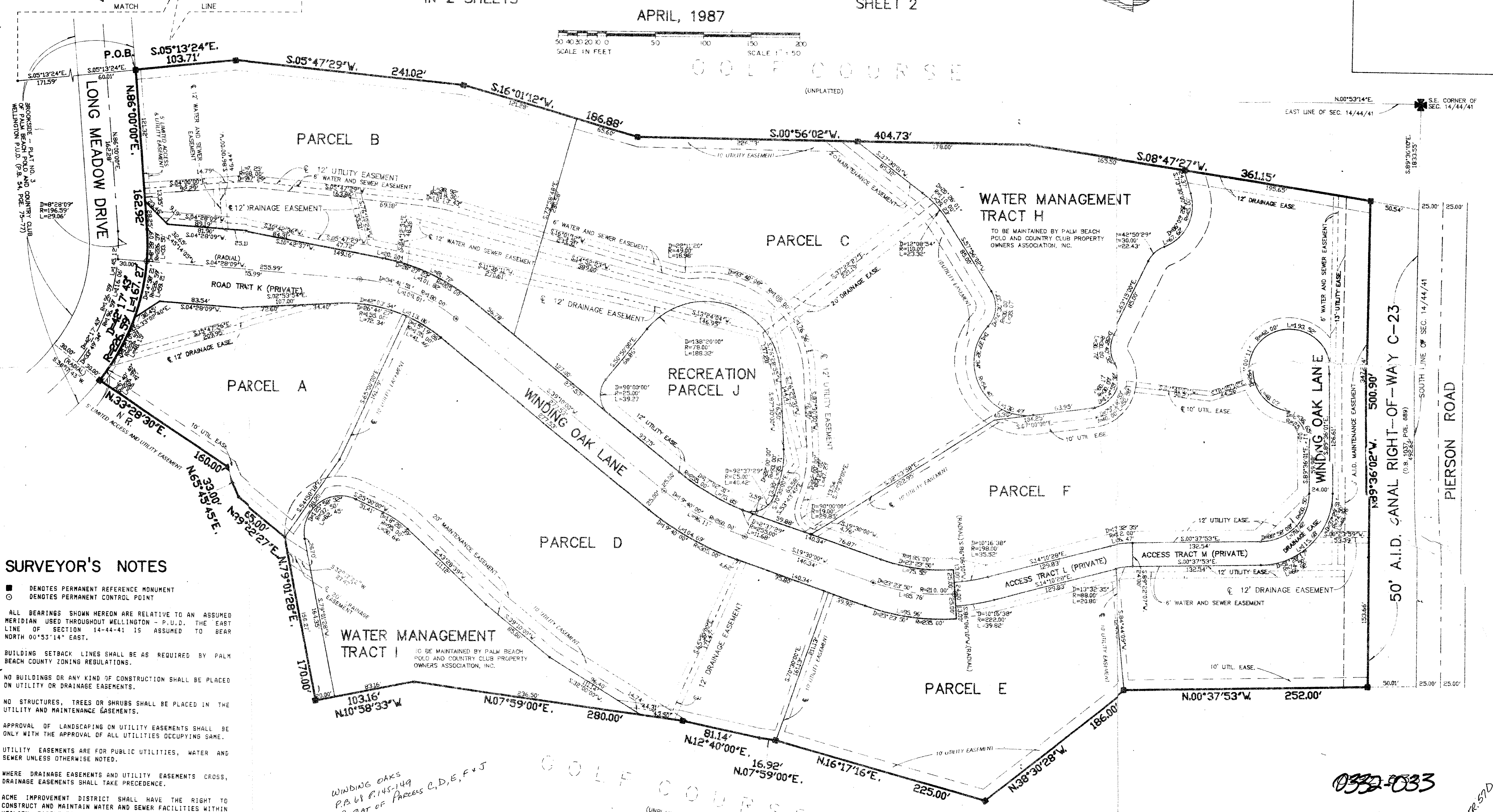
IN PART OF SECTION 14, TOWNSHIP 44 SOUTH, RANGE 41 EAST
PALM BEACH COUNTY, FLORIDA
IN 2 SHEETS

APRIL, 1987

SHEET 2



P.R.M. AT THE S.W. CORNER OF LOT 8
BROOKSIDE-PLAT NO. 1 OF P.B. POLO AND
COUNTRY CLUB - WELLINGTON - P.U.D.
P.B. 50 PGS. 175 AND 176



SURVEYOR'S NOTES

- DENOTES PERMANENT REFERENCE MONUMENT
- DENOTES PERMANENT CONTROL POINT
- ALL BEARINGS SHOWN HEREON ARE RELATIVE TO AN ASSUMED MERIDIAN USED THROUGHOUT WELLINGTON - P.U.D. THE EAST LINE OF SECTION 14-44-41 IS ASSUMED TO BEAR NORTH 00°53'14" EAST.
- BUILDING SETBACK LINES SHALL BE AS REQUIRED BY PALM BEACH COUNTY ZONING REGULATIONS.
- NO BUILDINGS OR ANY KIND OF CONSTRUCTION SHALL BE PLACED ON UTILITY OR DRAINAGE EASEMENTS.
- NO STRUCTURES, TREES OR SHRUBS SHALL BE PLACED IN THE UTILITY AND MAINTENANCE EASEMENTS.
- APPROVAL OF LANDSCAPING ON UTILITY EASEMENTS SHALL BE ONLY WITH THE APPROVAL OF ALL UTILITIES OCCUPYING SAME.
- UTILITY EASEMENTS ARE FOR PUBLIC UTILITIES, WATER AND SEWER UNLESS OTHERWISE NOTED.
- WHERE DRAINAGE EASEMENTS AND UTILITY EASEMENTS CROSS, DRAINAGE EASEMENTS SHALL TAKE PRECEDENCE.
- ACME IMPROVEMENT DISTRICT SHALL HAVE THE RIGHT TO CONSTRUCT AND MAINTAIN WATER AND SEWER FACILITIES WITHIN UTILITY EASEMENTS, ROAD TRACTS, AND ACCESS TRACTS AS SHOWN HEREON.
- PARCELS A THROUGH F ARE FOR CONDOMINIUM USE UNLESS REPLATTED.

14444
 SUBDIVISION - Oak Tree Villas
 BOOK 57 PAGE 113
 FLOOD ZONE B FLOOR MAP 1000
 QUAD 42 ZONING
 SE
 ZIP CODE 33414
 PUD NAME P.B. & C.C. #11

WINDING OAKS
 P.B. & C.C. #145-149
 REAR OF PARCELS C, D, E, F, & J

0332-033

THIS INSTRUMENT PREPARED BY:
 PAUL J. FOTORNY OF DAILEY-FOTORNY, INC.
 5050 10TH AVENUE NORTH, SUITE B
 LAKE NORTON, FLORIDA 33463

Oak Tree Villas of P.B. & C.C. #113

Dailey-Fotorny Inc.
 Surveyors, planners, engineers