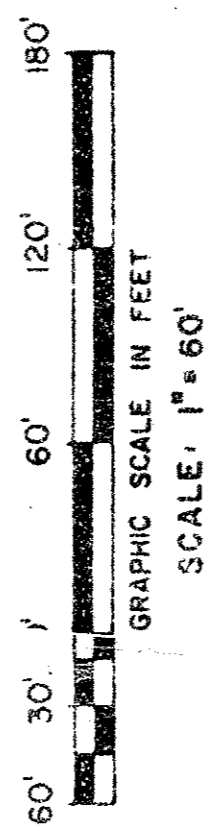


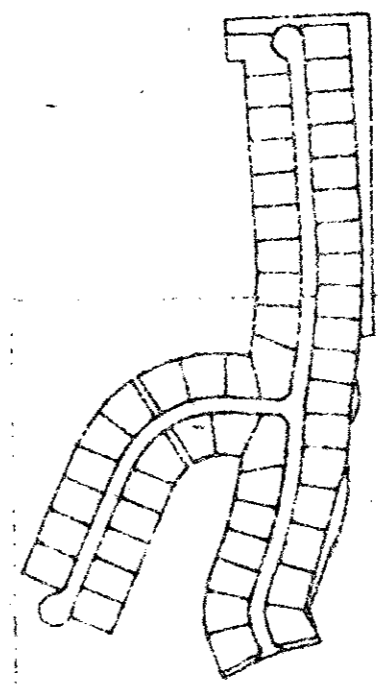
PLAT NO. 10 ST. ANDREWS COUNTRY CLUB  
(PB 55, PGS 54-62)



NOTE: ORIGINAL DRAINAGE ISEMENTS SHOWN ON PLAT NO 10 ST ANDREWS COUNTRY CLUB LYING WITHIN THIS PLAT, ABANDONED BY OR.B. 3304, PGS 463-464

SEE SHEET 4 OF 4

Pet 80-73  
FS Zone 30  
Head A  
33/46/42  
At 1/1000



KEY MAP

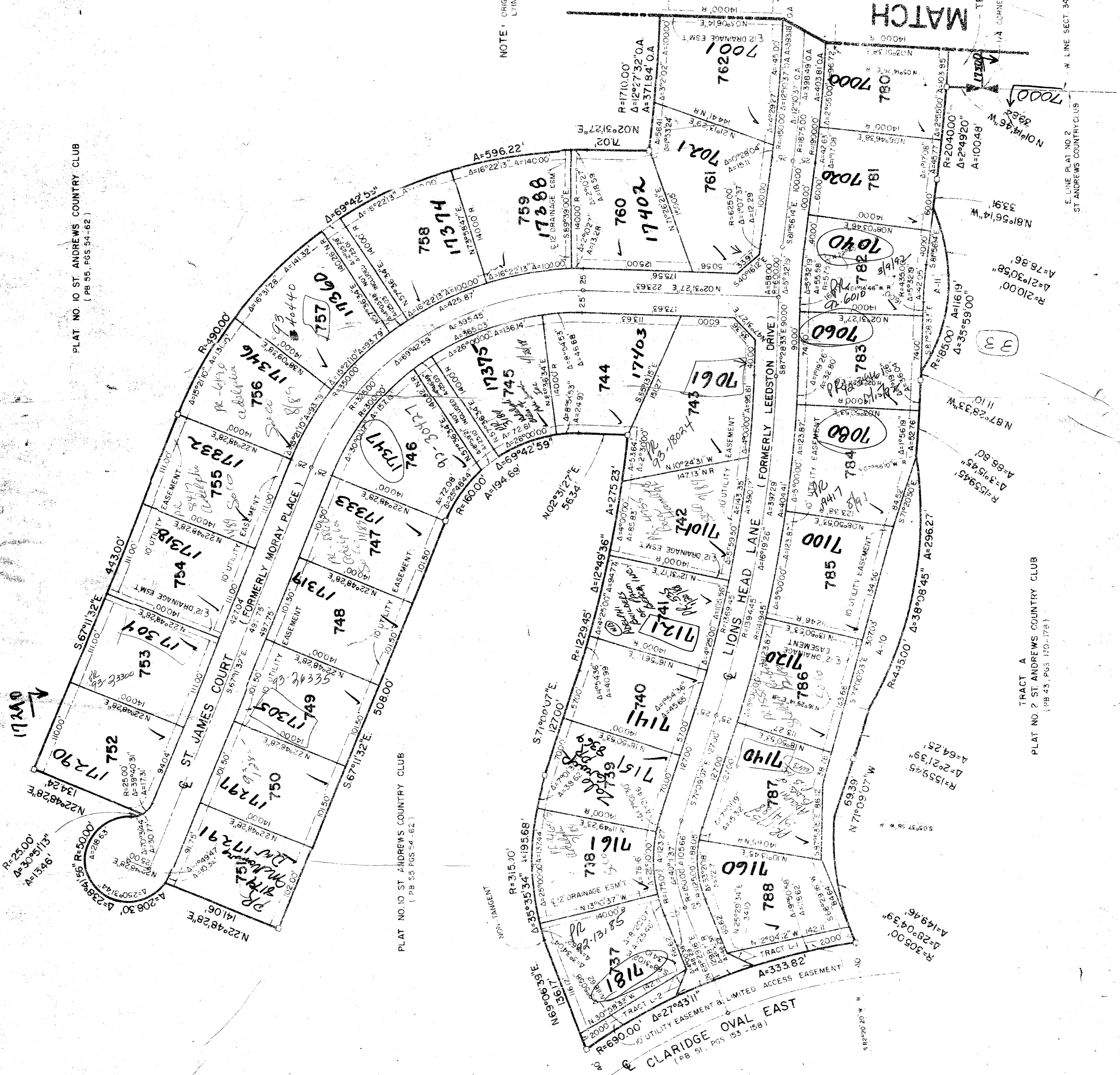
ST. ANDREWS COUNTRY CLUB  
(A PUD)

PLAT No. 14

WALLACE SURVEYING  
CONSULTANTS  
9776 ALPINE AVE. LAKE WALKER, FLORIDA 33403 • (813) 942-2253

DATE	
REVISION	
3	9
4	

DUPLICATE PLAT 2/18



PLAT NO. 10 ST. ANDREWS COUNTRY CLUB  
(PB 55 PGS 54-62)

PLAT NO. 10 ST. ANDREWS COUNTRY CLUB  
(PB 55 PGS 54-62)

TRACT A  
PLAT NO. 2 ST. ANDREWS COUNTRY CLUB  
(PB 43, PGS 170-178)

E. LINE PLAT NO. 2  
ST. ANDREWS COUNTRY CLUB

SUBDIVISION + ST. ANDREWS COUNTRY CLUB  
 BOOK 57  
 FLOOD ZONE 0  
 QUAD + 33-57  
 ZIP CODE 33457  
 PUD NAME #14 PUD  
 PUD CODE 33457

1/10/87 J. Garcia