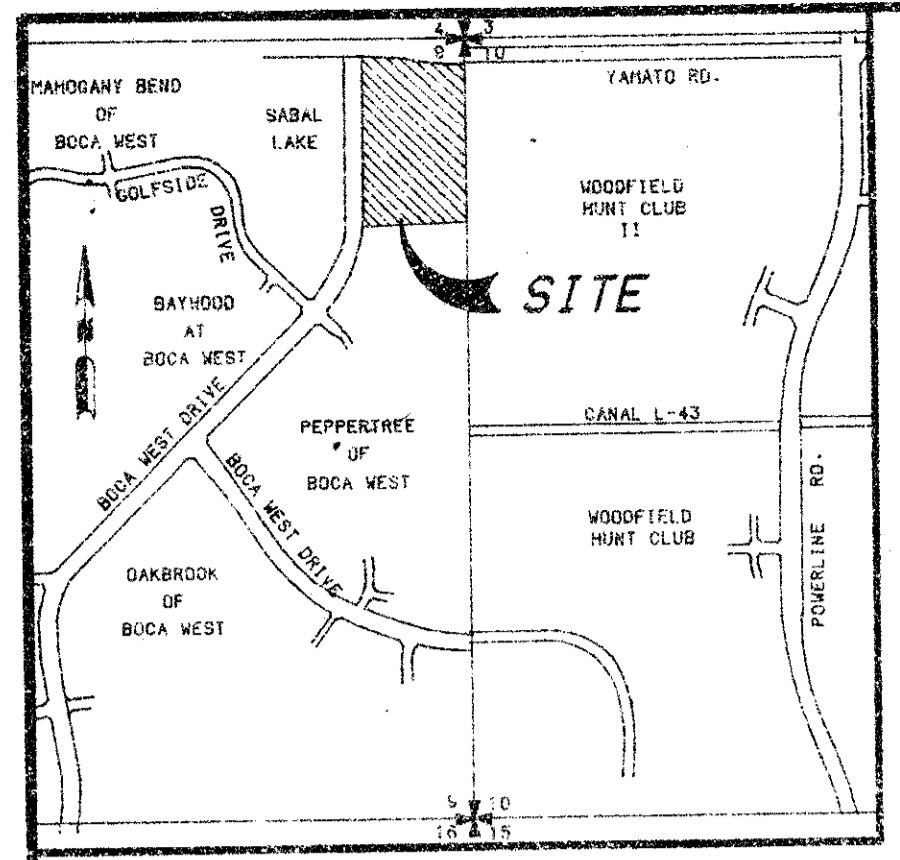


FOX LANDING

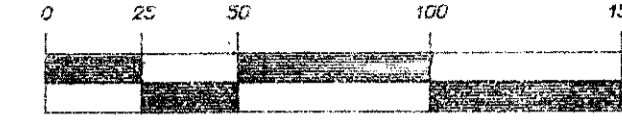
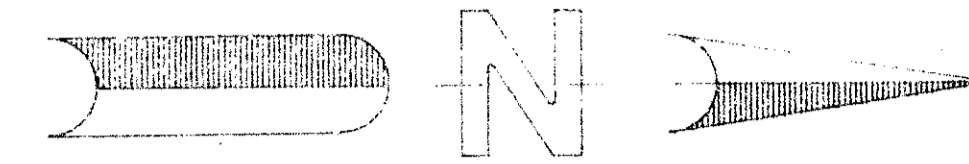
BEING A PLAT OF A PORTION OF THE NORTHEAST QUARTER OF SECTION 9, TOWNSHIP 47 SOUTH, RANGE 42 EAST
PALM BEACH COUNTY, FLORIDA

FEBRUARY 1987
SHEET 2 OF 2 SHEETS

N.W. CORNER OF N.E.
1/4, SECTION 9-47-42
FND. P.B. CO. BRASS
DISC IN CONCRETE

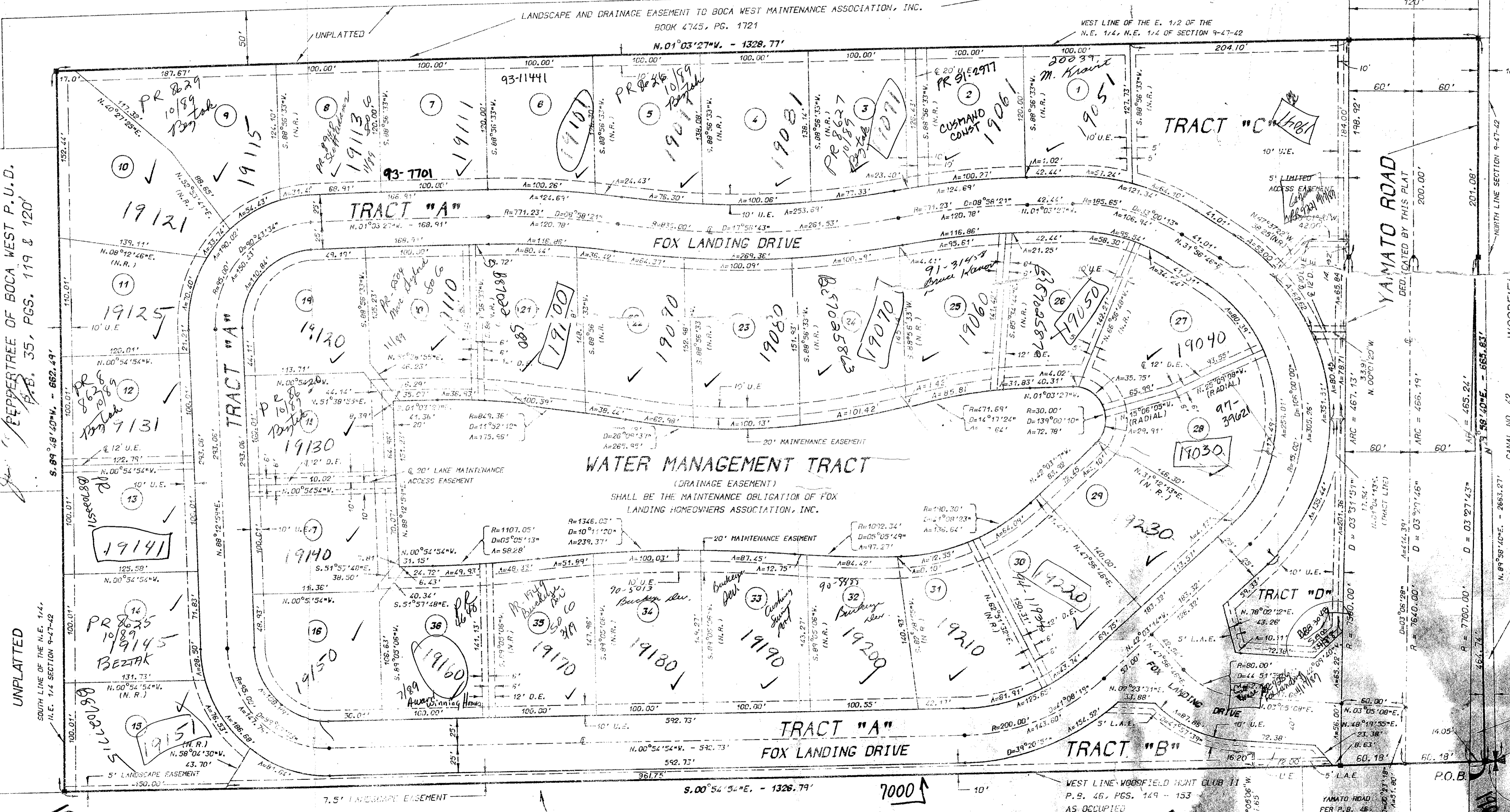


LOCATION MAP
59 & 10, T47S, R42E



SCALE: 1" = 50'

SUBDIVISION Fox Landing
BOOK 57 PAGE 152
FLOOD ZONE B
QUAD # 53
SE PRD
PUD MAP
TAZ 607
9/11/82



SURVEYOR'S NOTES

- 1.) ALL P.R.M.'s BEAR THE REGISTRATION NUMBER 4213 SHOWN THUS - ■
- 2.) ALL P.C.P.'s (PERMANENT REFERENCE POINTS) SHOWN THUS - ●
- 3.) BEARINGS SHOWN HEREON ARE BASED UPON A BEARING OF N. 89°58'40"E. ON THE NORTH LINE OF SECTION 9-47-42.
- 4.) D.E. - INDICATES A DRAINAGE EASEMENT.
- 5.) U.E. - INDICATES A UTILITY EASEMENT.
- 6.) L.A.E. - INDICATES A LIMITED ACCESS EASEMENT.
- 7.) NO BUILDINGS OR ANY KIND OF CONSTRUCTION SHALL BE PLACED ON UTILITY, DRAINAGE OR LAKE MAINTENANCE EASEMENTS.
- 8.) THERE SHALL BE NO TREES OR SHRUBS PLACED ON UTILITY EASEMENTS WHICH ARE PROVIDED FOR WATER AND SEWER USE, UPON DRAINAGE EASEMENTS OR UPON LAKE MAINTENANCE EASEMENTS.
- 9.) LANDSCAPING OR OTHER UTILITY EASEMENTS SHALL BE ALLOWED ONLY AFTER CONSENT OF ALL UTILITY COMPANIES OCCUPYING SAME.
- 10.) WHERE UTILITY AND DRAINAGE EASEMENTS INTERSECT, DRAINAGE EASEMENTS SHALL TAKE PRECEDENCE.
- 11.) WHERE UTILITY AND LAKE MAINTENANCE EASEMENTS INTERSECT, LAKE MAINTENANCE EASEMENTS SHALL TAKE PRECEDENCE.
- 12.) THERE SHALL BE NO ABOVE GROUND APPURTANCES PLACED WITHIN THE LAKE MAINTENANCE EASEMENT.
- 13.) (N.R.) - INDICATES NON-RADIAL

WOODFIELD COUNTRY CLUB
P.B. 54 PGS. 79-88

CANAL NO. 42
L.V.D.C. R.O.V. FOR LATERAL
BOOK 1542, P. 766

L.V.D.C. RIGHT-OF-WAY
PER O.R.B. 5300
P.O.C.
NORTHEAST CORNER
SECTION 9-47-42
FND. P.B. CO. BRASS
DISC IN CONCRETE
9-47-42

APPROVED BY
CHECKED BY

THIS INSTRUMENT PREPARED BY
PERRY C. WHITE, P.L.S. 4213 STATE OF FLORIDA

LAWSON, NOBLE & ASSOCIATES, INC.

ENGINEERS PLANNERS TESTING SURVEYORS
BOYNTON BEACH, FLORIDA

FOX LANDING 57/152

0524-001