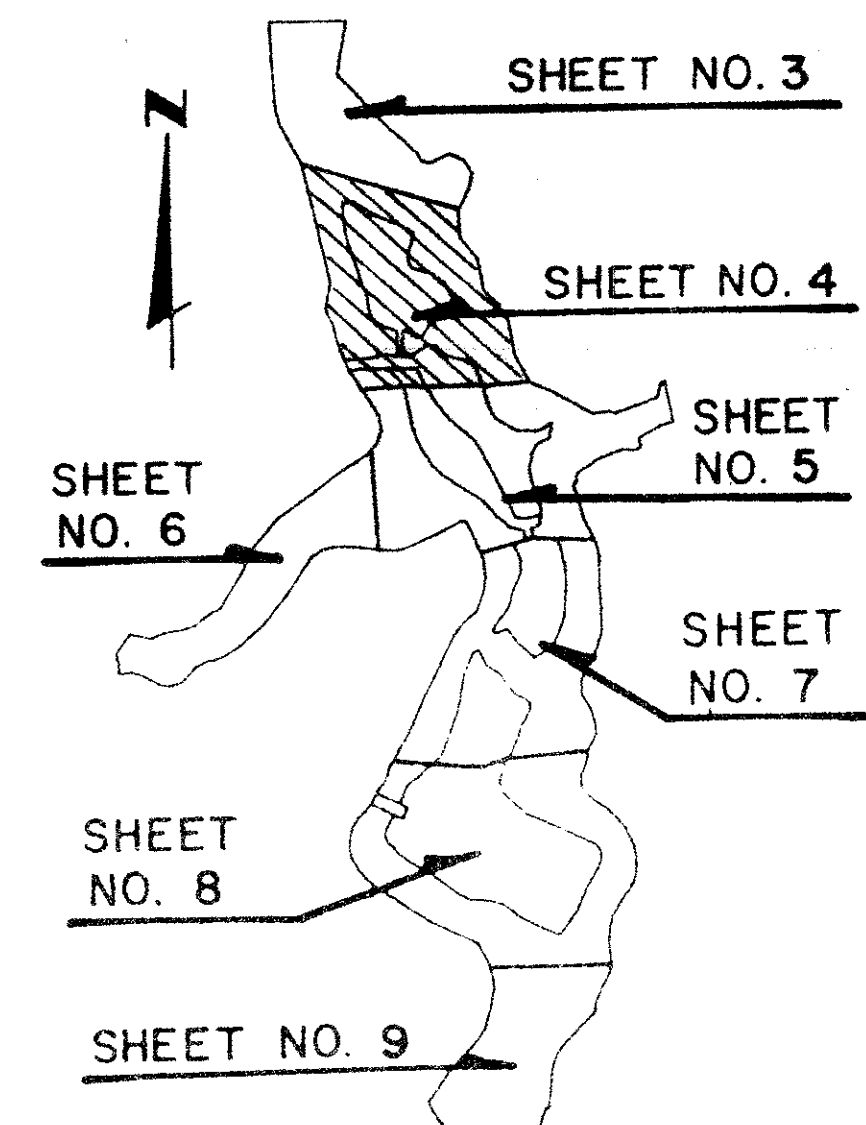
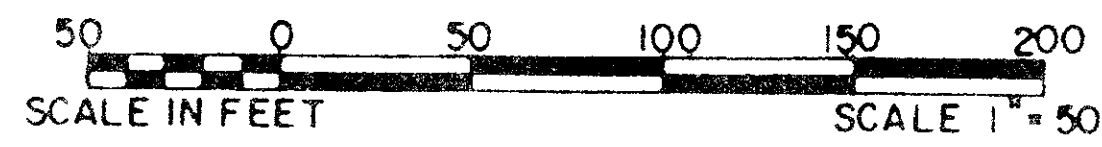


RECREATION AREAS AT JONATHAN'S LANDING P.U.D.

IN PART OF SECTIONS 6 AND 7, TOWNSHIP 41 SOUTH, RANGE 43 EAST
PALM BEACH COUNTY, FLORIDA
IN NINE SHEETS SHEET NO. 4

GEE & JENSON
ENGINEERS - ARCHITECTS - PLANNERS, INC.
WEST PALM BEACH, FLORIDA
NOVEMBER 1986



174

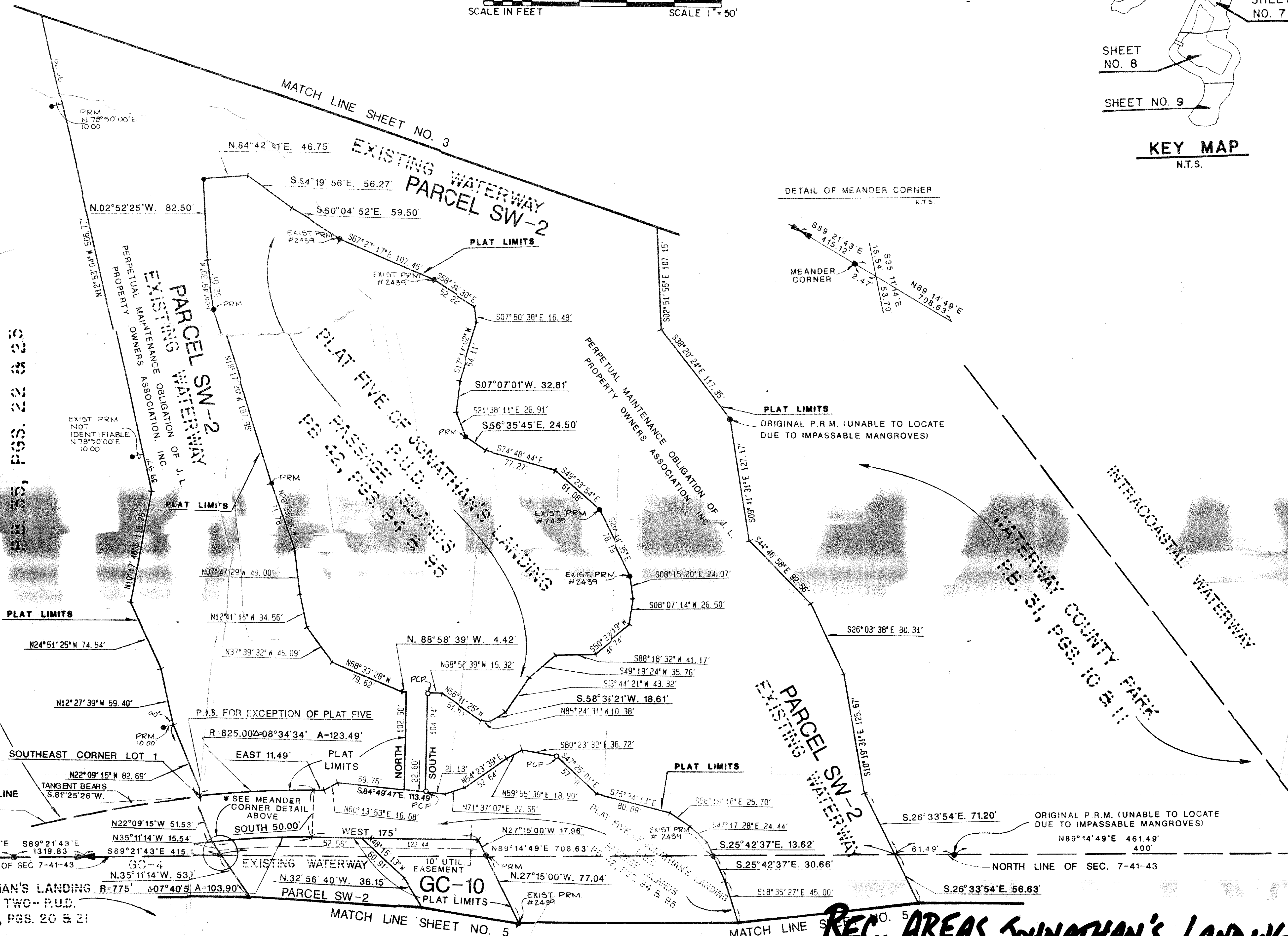
STATE OF FLORIDA
COUNTY OF PALM BEACH
This plat was filed for
record at _____ M. this _____ day
of _____ 1987, and duly
recorded in Plat Book No. _____
on Pages _____ thru _____

JOHN B. DUNKLE
Clerk Circuit Court
By: _____ D.C.

KEY MAP
N.T.S.

COMMISSION	PAGE
BOOK	FLOOR MAP #
QUAD #	ZONING RM
SE PUD	ZIP CODE
PUD NAME	

TOWNE OF
JONATHAN'S LANDING
 P.U.D.
 PB. 35, PGS. 22 & 23



Pet. 79-230

0261-003

REC. AREAS, JONATHAN'S LANDING 57/174

COMPUTED	<i>PAC</i>
DRAWN	<i>D.L.B.</i>
CHECKED	<i>HD</i>
APPROVED	
REVISION	