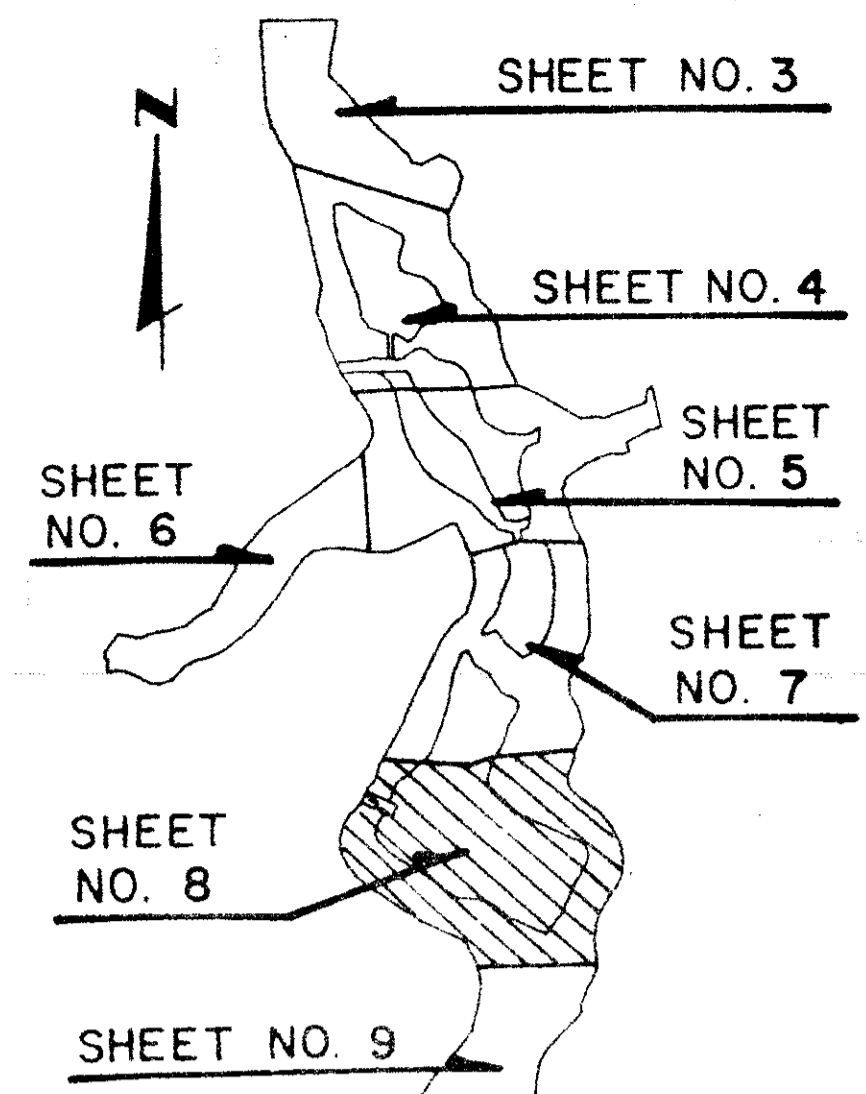
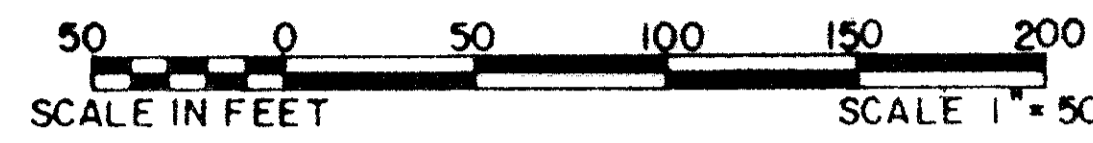


# RECREATION AREAS AT JONATHAN'S LANDING P.U.D.

IN PART OF SECTIONS 6 AND 7, TOWNSHIP 41 SOUTH, RANGE 43 EAST

PALM BEACH COUNTY, FLORIDA  
IN NINE SHEETS SHEET NO. 8

GEE & JENSON  
ENGINEERS - ARCHITECTS - PLANNERS, INC.  
WEST PALM BEACH, FLORIDA  
NOVEMBER 1986



**178**

STATE OF FLORIDA  
COUNTY OF PALM BEACH  
This plat was filed for  
record at \_\_\_\_\_ M. this \_\_\_\_\_ day  
of \_\_\_\_\_ 1987, and duly  
recorded in Plat Book No. \_\_\_\_\_  
on Pages \_\_\_\_\_ thru \_\_\_\_\_.

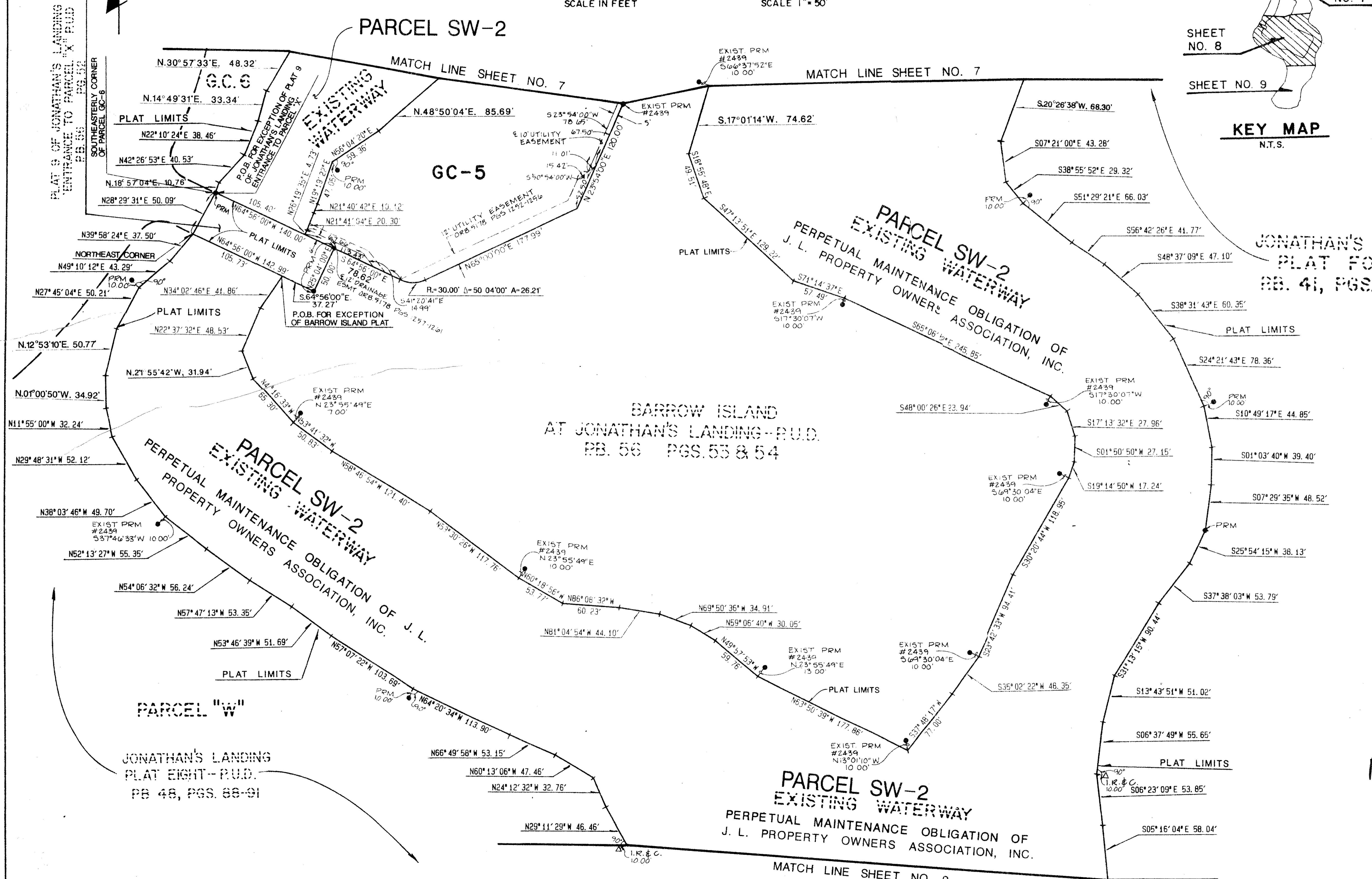
JOHN B. DUNKLE  
Clerk Circuit Court

By: \_\_\_\_\_ D.C.

TAZ 45

SUBDIVISION # **57**  
BOOK **178**  
PAGE **178**  
FLOOD MAP  
ZONING RM  
CADD #  
JOB #  
JOB NAME

COMPUTED PAC  
DRAWN D.C.B.  
CHECKED J.H.D.  
COMMENTS \_\_\_\_\_  
APPROVED \_\_\_\_\_  
REVISION \_\_\_\_\_



JONATHAN'S LANDING  
PLAT FOUR-P.U.D.  
PB. 41, PGS. 183-185

PARCEL SW-2  
EXISTING WATERWAY  
PERPETUAL MAINTENANCE OBLIGATION OF  
J. L. PROPERTY OWNERS ASSOCIATION, INC.

Pet. 79-230

0261-003

REC. AREAS, JONATHAN'S LANDING 57/178