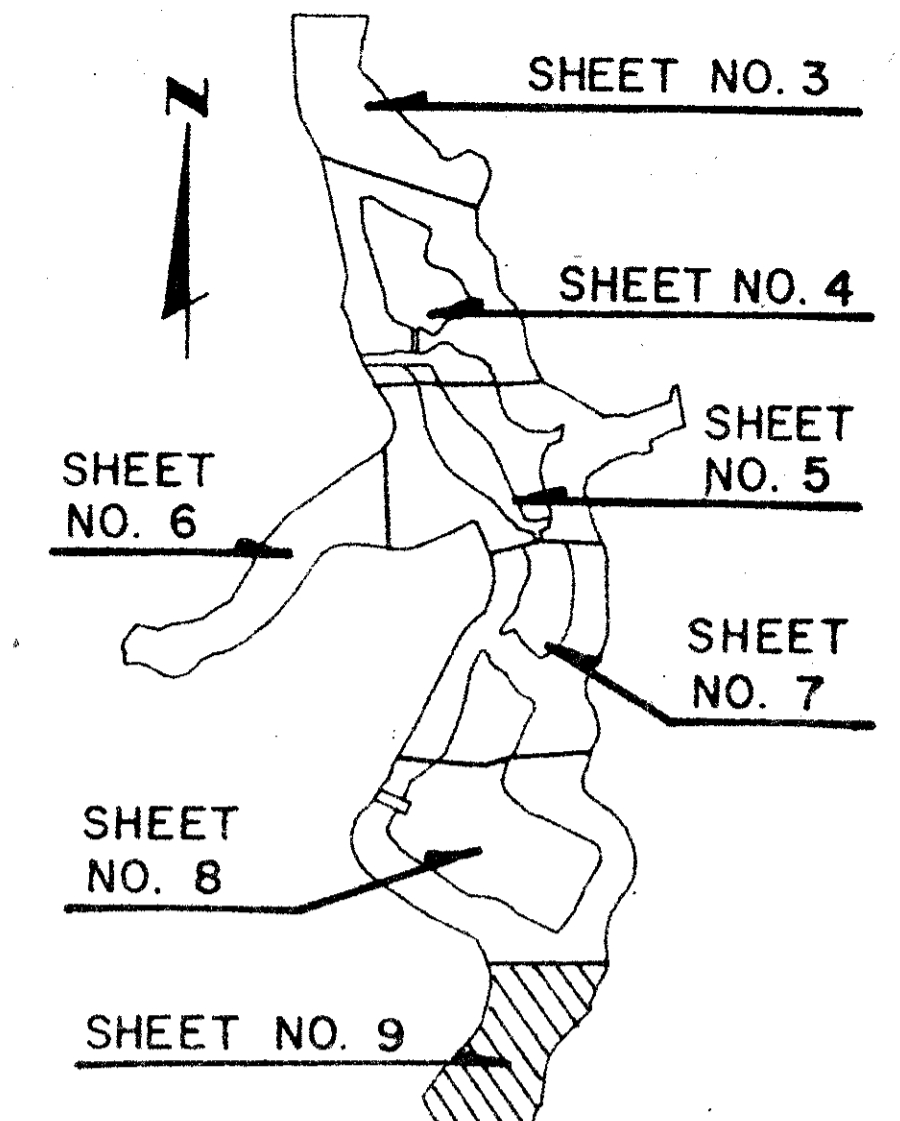
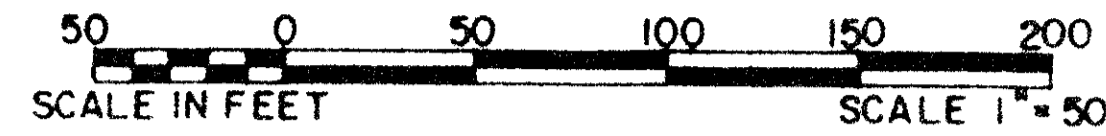


RECREATION AREAS AT JONATHAN'S LANDING P.U.D.

IN PART OF SECTIONS 6 AND 7, TOWNSHIP 41 SOUTH, RANGE 43 EAST
PALM BEACH COUNTY, FLORIDA
IN NINE SHEETS SHEET NO. 9

GEE & JENSON
ENGINEERS - ARCHITECTS - PLANNERS, INC.
WEST PALM BEACH, FLORIDA
NOVEMBER 1986



179

STATE OF FLORIDA
COUNTY OF PALM BEACH
This plat was filed for
record at _____ M. this _____ day
of _____ 1987, and duly
recorded in Plat Book No. _____
on Pages _____ thru _____.

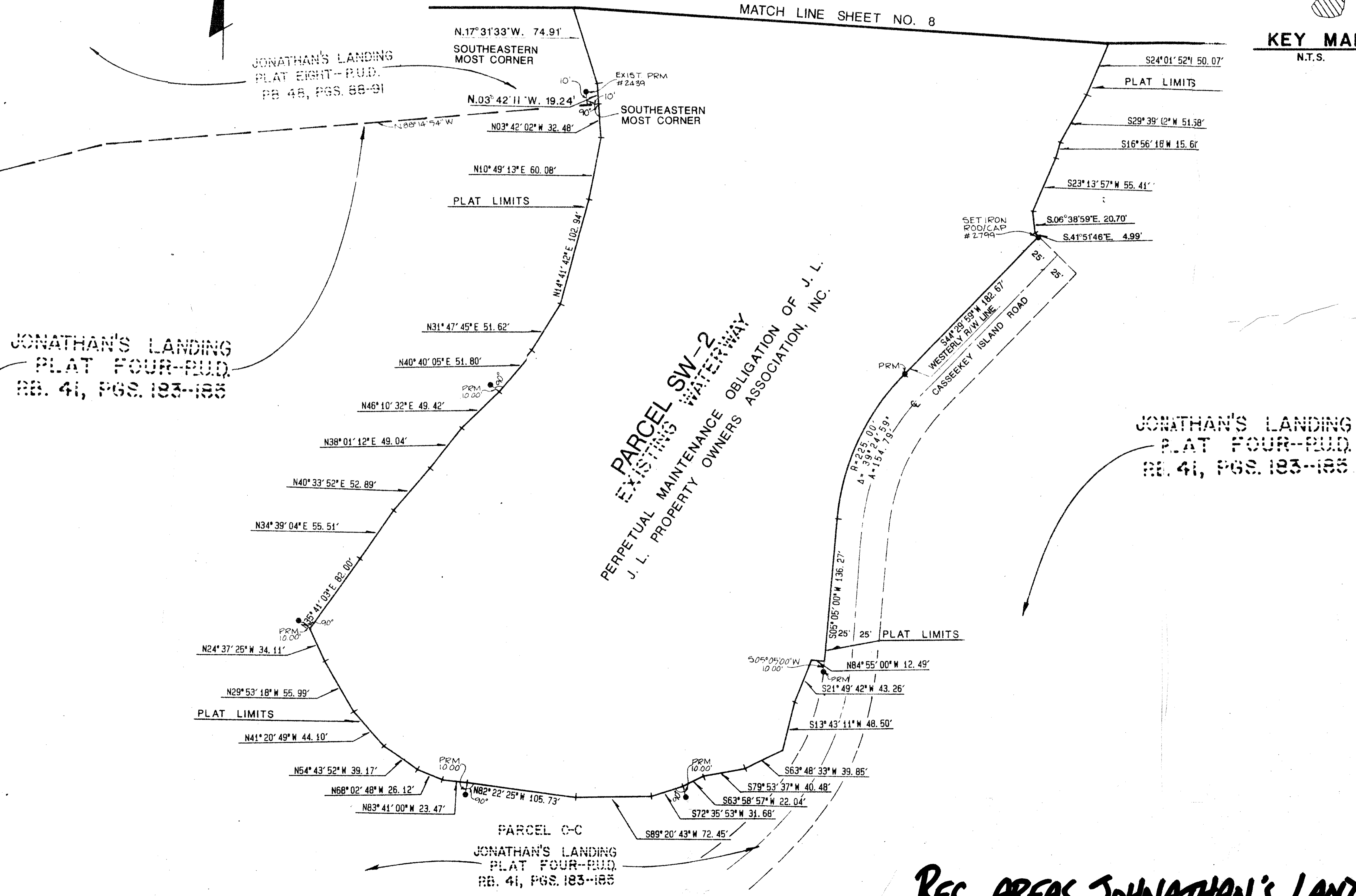
JOHN B. DUNKLE
Clerk Circuit Court
By: _____ D.C.

TAZ 45

KEY MAP
N.T.S.

SUBDIVISION *
 BOOK _____
 FLOOD ZONE _____
 ROAD # _____
 P.U.D. _____
 PAGE _____
 PLAT NO. _____
 EXISTING RM _____
 ZONING _____

COMPUTED PAC
 DRAWN O.L.B.
 CHECKED HWD
 COMMENTS _____
 APPROVED _____
 REVISION _____



REC. AREAS, JONATHAN'S LANDING 57/179

Pet. 79-230
0261-0