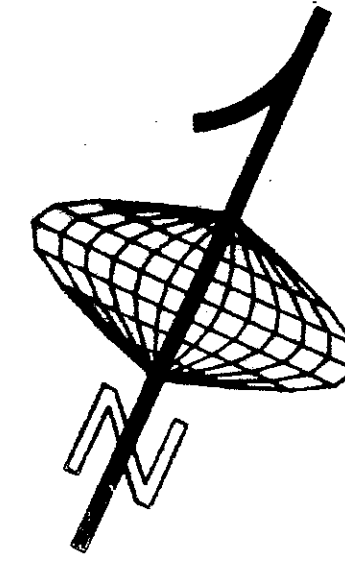


MONTEGO BAY PLAT 1

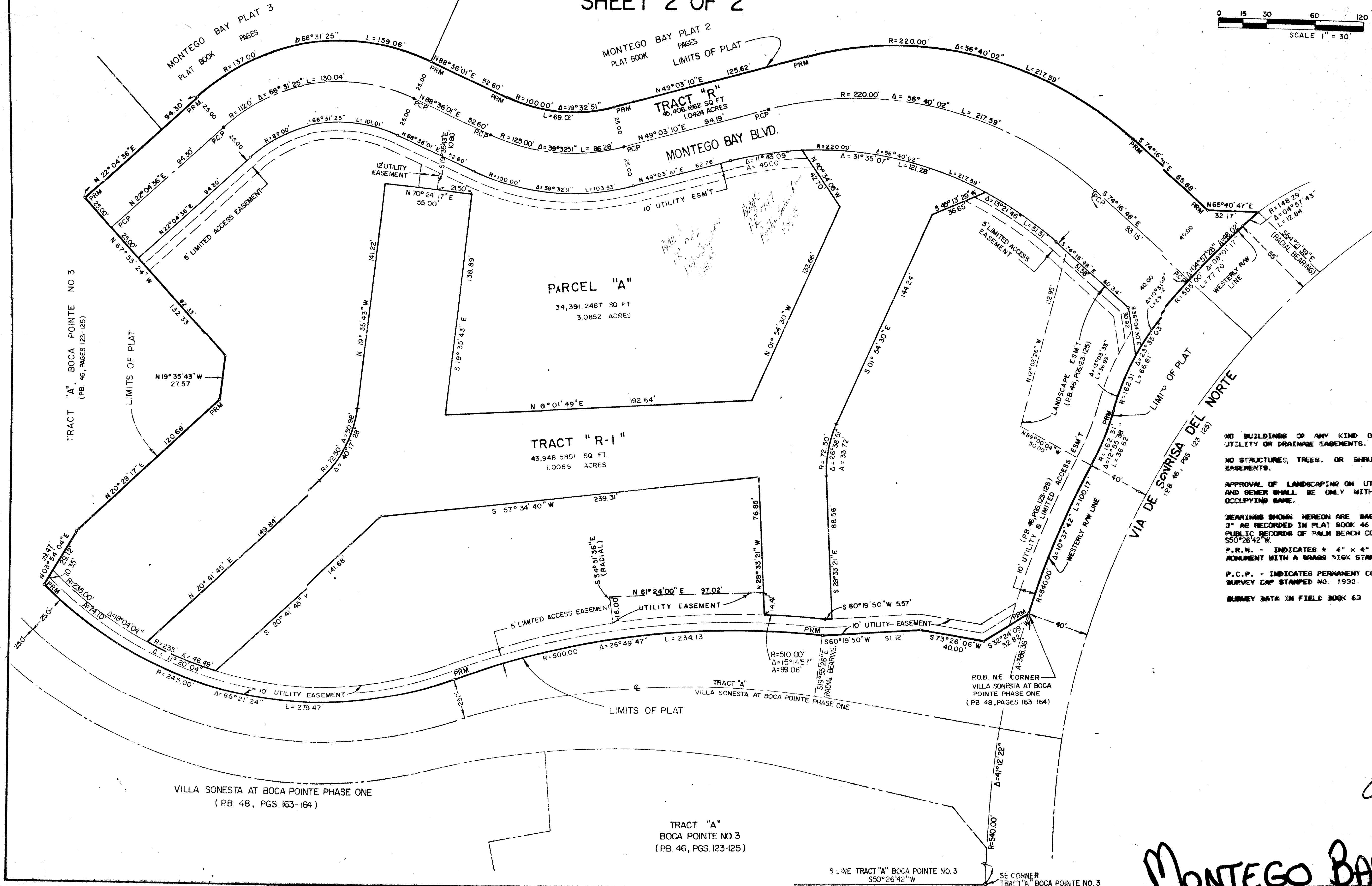
SEC. 27, TWP. 47 S., RGE. 42 E.

A PORTION OF BOCA POINTE P.U.D., BEING A REPLAT OF A PORTION OF TRACT "A", BOCA POINTE PLAT NO.3 AS RECORDED IN PLAT BOOK 46, PAGES 123, 124, 125 OF THE PUBLIC RECORDS OF PALM BEACH COUNTY, FLORIDA
SHEET 2 OF 2

STATE OF FLORIDA
COUNTY OF PALM BEACH
THIS PLAT WAS FILED FOR
RECORD AT _____ M.
THIS _____ DAY OF _____
A.D. 1987 AND DULY RECORDED
IN PLAT BOOK _____ ON
PAGES _____ AND _____
JOHN B. DUNKLE,
CLERK CIRCUIT COURT
BY _____
DEPUTY CLERK



0 15 30 60 120
SCALE 1" = 30'



NO BUILDINGS OR ANY KIND OF CONSTRUCTION SHALL BE PLACED ON UTILITY OR DRAINAGE EASEMENTS.
NO STRUCTURES, TREES, OR SHRUBS SHALL BE PLACED ON DRAINAGE EASEMENTS.
APPROVAL OF LANDSCAPING ON UTILITY EASEMENTS, OTHER THAN WATER AND GEMER SHALL BE ONLY WITH THE APPROVAL OF ALL UTILITIES OCCURRING SAME.
BEARINGS SHOWN HEREON ARE BASED ON THE PLAT OF "BOCA POINTE NO. 3" AS RECORDED IN PLAT BOOK 46 AT PAGES 123, 124 AND 125 OF THE PUBLIC RECORDS OF PALM BEACH COUNTY FLORIDA, SOUTH LINE TRACT "A" 550°26'42" W.
P.R.M. - INDICATES A 4" x 4" x 36" CONCRETE PERMANENT REFERENCE MONUMENT WITH A BRASS NAIL STAMPED NO. 1930.
P.C.P. - INDICATES PERMANENT CONTROL POINT AND IS A NAIL IN BRASS SURVEY CAP STAMPED NO. 1930.
SURVEY DATA IN FIELD BOOK 63

SUBDIVISION - Montego Bay
BOOK 58 PAGE 16
FLOOD ZONE AP-1 FLOOD MAP #240B
QUAD # 39 ZONING RS
SE PUD ZIP CODE 33433
PUD NAME Boca Pointe
TAZ 6816

0211-011
Montego Bay #1 58/16

VILLA SONESTA AT BOCA POINTE PHASE ONE
(PB. 48, PGS. 163-164)

TRACT "A"
BOCA POINTE NO. 3
(PB. 46, PGS. 123-125)

S. LINE TRACT "A" BOCA POINTE NO. 3
550°26'42" W

SE CORNER
TRACT "A" BOCA POINTE NO. 3