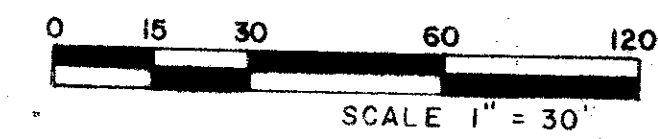
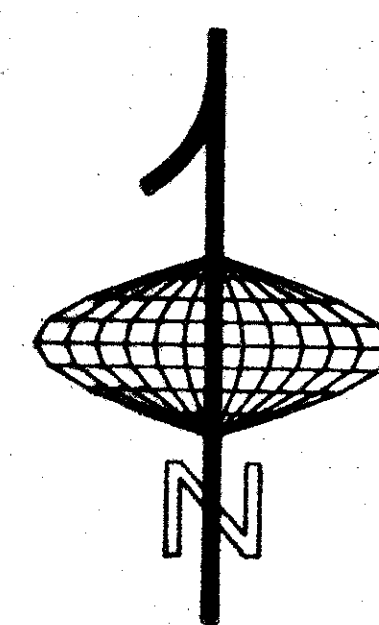


MONTEGO BAY PLAT 2

SEC. 27, TWP. 47 S., RGE. 42 E.
 A PORTION OF BOCA POINTE P.U.D., BEING A REPLAT OF A PORTION OF TRACT "A",
 BOCA POINTE PLAT NO.3 AS RECORDED IN PLAT BOOK 46, PAGES 123, 124, 125 OF THE
 PUBLIC RECORDS OF PALM BEACH COUNTY, FLORIDA
 SHEET 2 OF 2

18

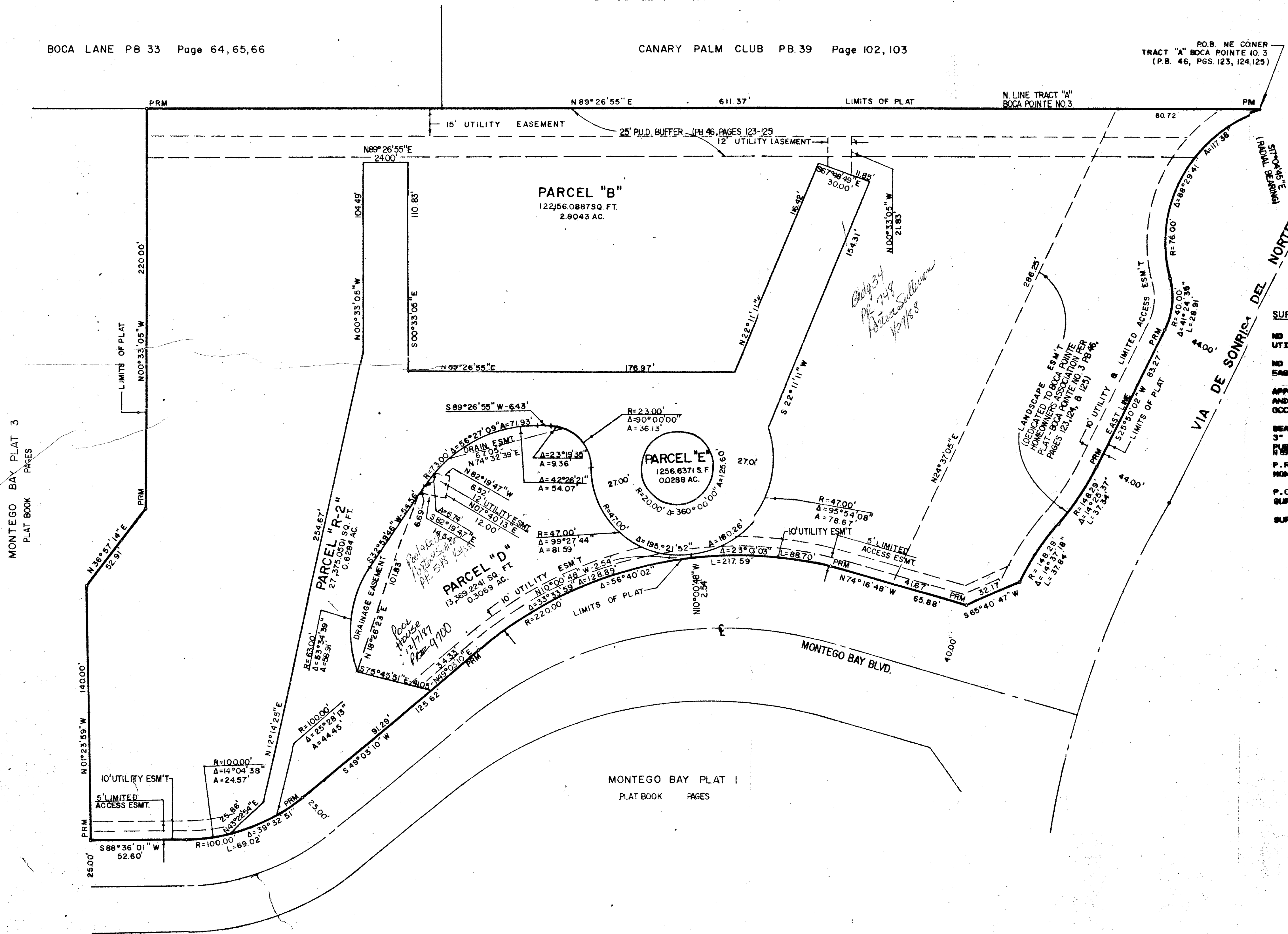
STATE OF FLORIDA
 COUNTY OF PALM BEACH
 THIS PLAT WAS FILED FOR
 RECORD AT _____
 THIS _____ DAY OF _____
 A.D. 1987 AND DULY RECORDED
 IN PLAT BOOK _____ ON _____
 PAGES _____ AND _____
 JOHN B. DUNKLE,
 CLERK CIRCUIT COURT
 BY _____
 DEPUTY CLERK



BOCA LANE PB 33 Page 64, 65, 66

CANARY PALM CLUB PB. 39 Page 102, 103

P.O.B. NE CORNER
 TRACT "A" BOCA POINTE NO. 3
 (P.B. 46, PGS. 123, 124, 125)



PREPARED BY
 GEORGE W. CAULFIELD
CAULFIELD and WHEELER, INC.
 LAND SURVEYORS-CONSULTING ENGINEERS
 7301 A WEST PALMETTO PARK ROAD, SUITE 100A
 BOCA RATON, FLORIDA 33433

SURVEYOR'S NOTES
 NO BUILDINGS OR ANY KIND OF CONSTRUCTION SHALL BE PLACED ON
 UTILITY OR DRAINAGE EASEMENTS.
 NO STRUCTURES, TREES, OR SHRUBS SHALL BE PLACED ON DRAINAGE
 EASEMENTS.
 APPROVAL OF LANDSCAPING ON UTILITY EASEMENTS, OTHER THAN WATER
 AND GRASS SHALL BE ONLY WITH THE APPROVAL OF ALL UTILITIES
 OCCUPYING SAME.
 BEARINGS SHOWN HEREON ARE BASED ON THE PLAT OF "BOCA POINTE NO.
 3" AS RECORDED IN PLAT BOOK 46 AT PAGES 123, 124 AND 125 OF THE
 PUBLIC RECORDS OF PALM BEACH COUNTY FLORIDA, NORTH LINE TRACT "A"
 N 89° 26' 55" E
 P.R.M. - INDICATES A 4" x 4" x 36" CONCRETE PERMANENT REFERENCE
 MONUMENT WITH A BRASS DISK STAMPED NO. 1930.
 P.C.P. - INDICATES PERMANENT CONTROL POINT AND IS A NAIL IN BRASS
 SURVEY CAP STAMPED NO. 1930.
 SURVEY DATA IN FIELD BOOK 63

SUBDIVISION - Montego Bay
 BOOK 58
 FLOOD ZONE FLOOD MAP - 2446
 QUAD # 39
 CE PUD
 PUD NAME Boca Pointe
 ZIP CODE 33433
 772 486

0211-308

Montego Bay #2 58/18