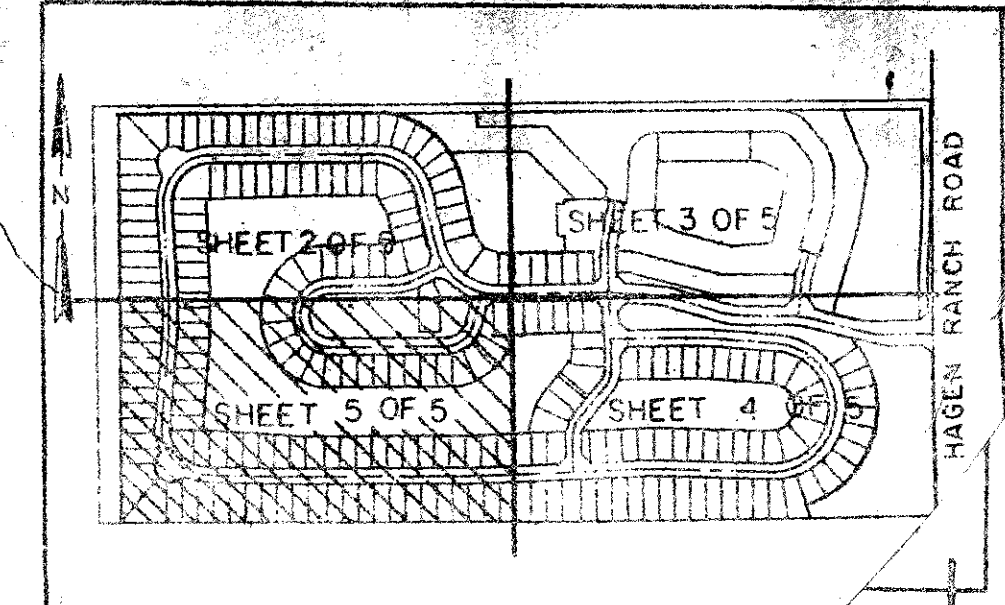


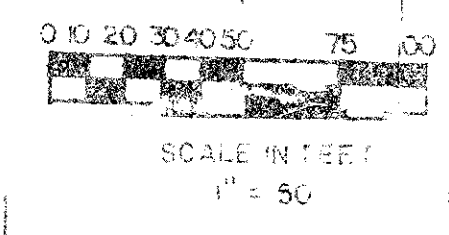
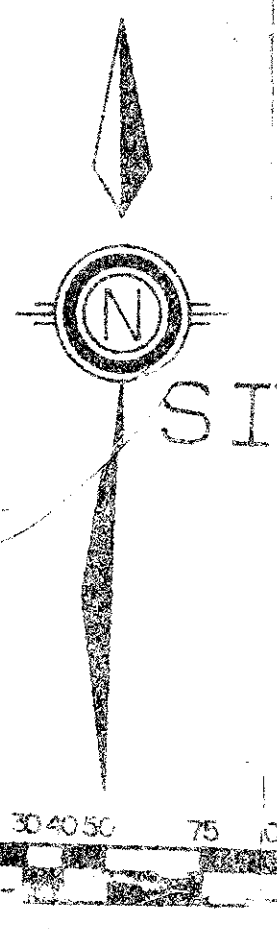
PINE RIDGE AT DELRAY BEACH

BEING A REPLAT OF A PORION OF
PALM BEACH FARMS COMPANY PLAT NO. 1
SITUATE IN SECTION 9, TOWNSHIP 46 SOUTH, RANGE 42 EAST
PALM BEACH COUNTY, FLORIDA

AUGUST, 1987 SHEET 5 OF 5



STATE OF FLORIDA
COUNTY OF PALM BEACH
THIS PLAT WAS FILED FOR
RECORD
THIS DAY OF
AUGUST, 1987 AND DULY RECORDED
IN PLAT BOOK ON PAGES
AND ON PAGES
JOHN B. DUNKLE, CLERK
BY: D.C.



PALM BEACH FARMS COMPANY PLAT NO. 1 (P.B. 2, PGS. 26-28)

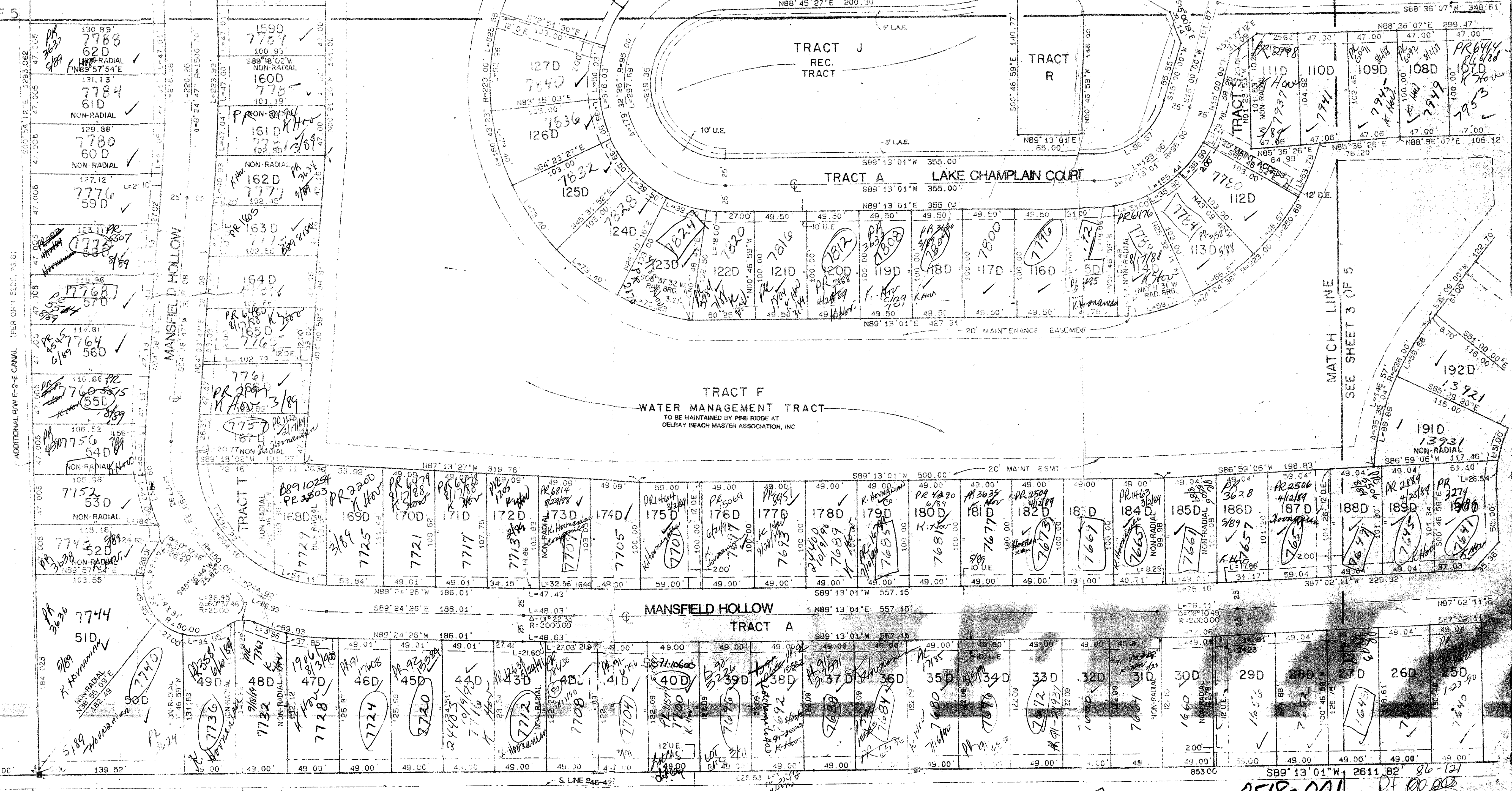
TAX 457
SUBDIVISION 58
BOOK 58
PAGE 51
PLANNED BY P.B. Farms I
RECORDING NO. 33446
JOB 120158

SEE SHEET 2 OF 5
MATCH LINE

N01°34'05"W 1293.23

VI LINE TRACT 113

CANAL RESERVATION (O.R.B. 1994, PG. 1573)



MATCH LINE
SEE SHEET 3 OF 5

15' ROAD CLAIMED QUIT CLAIMED
TO LWDD (O.R.B. 5100, PGS 710 & 711)

HAGEN RANCH ESTATES BOUNDARY PLAT
(P.B. 50, PGS. 124 & 126)

TURNOUT REQUIRED

ADD. BY
CHECKED BY

58/51

0518-001

Meridian
Surveying and Mapping Inc.
2000 LOMBARD STREET
WEST PALM BEACH, FL

DRAWN DATE MAY '87
CHECKED SCALE 1" = 50'
DRAWING NO. 09218 PL

PINE RIDGE AT
DELRAY BEACH