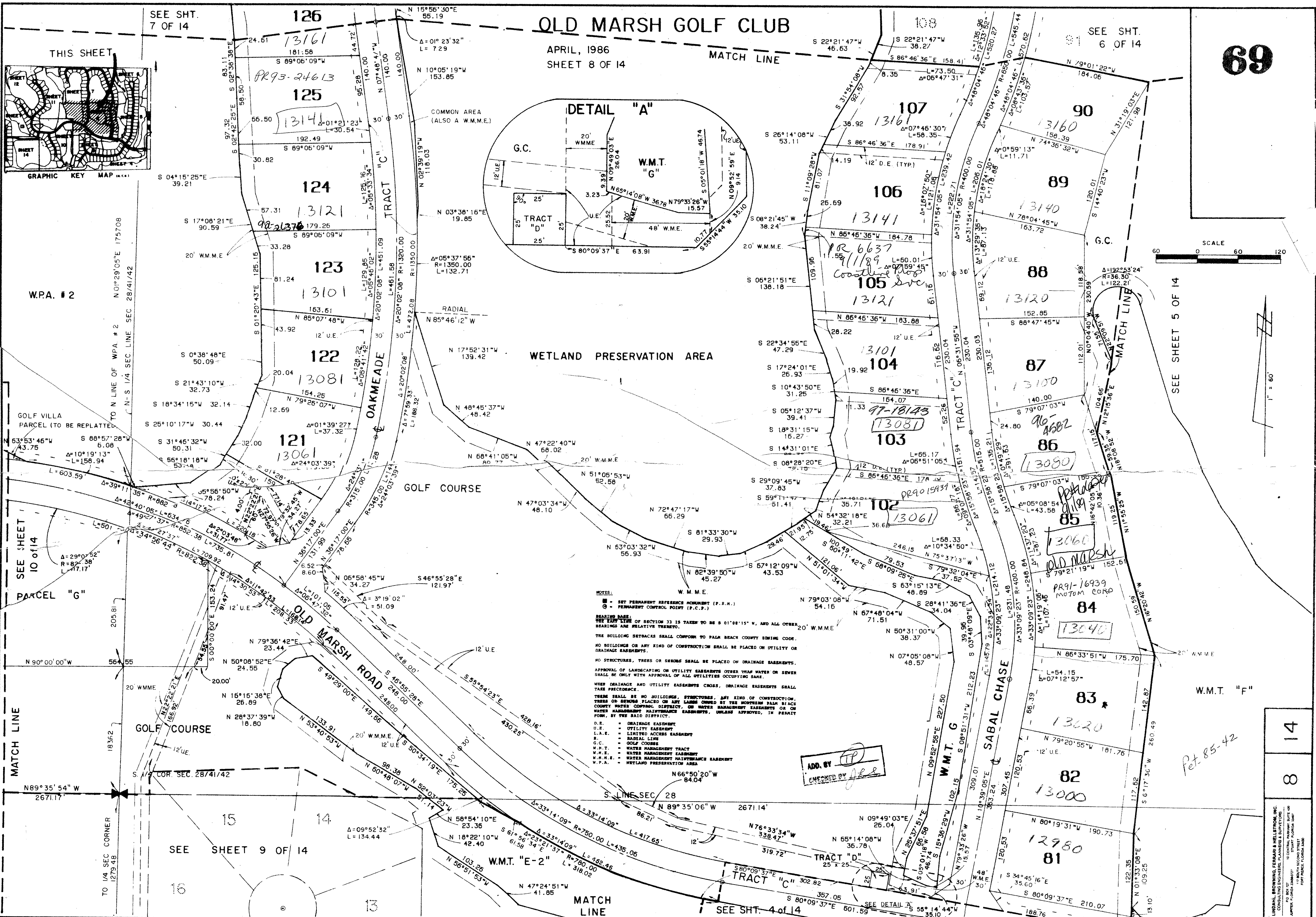
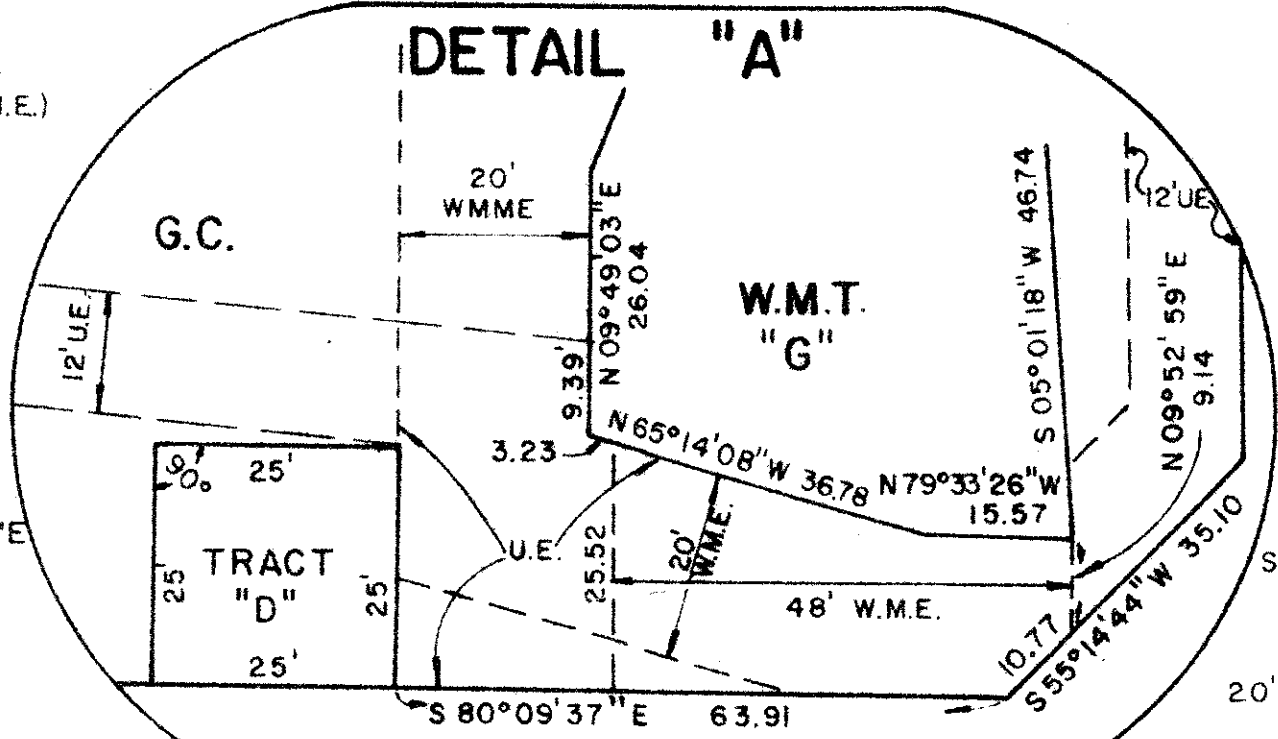
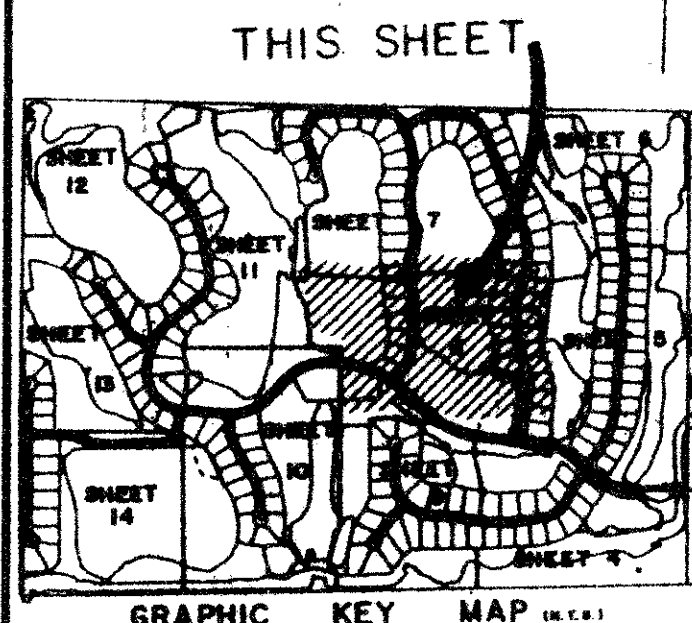


OLD MARSH GOLF CLUB

APRIL, 1986
SHEET 8 OF 14

SEE SHT. 6 OF 14

SEE SHT. 7 OF 14



SEE SHEET 5 OF 14

NOTES:

- SET PERMANENT REFERENCE MONUMENT (P.R.M.)
 - PERMANENT CONTROL POINT (P.C.P.)
- READING NOTE:
THE EAST LINE OF SECTION 33 IS TAKEN TO BE S 01°08'15" N, AND ALL OTHER BEARINGS ARE RELATIVE THERETO.
- THE BUILDING SETBACKS SHALL COMPLY TO PALM BEACH COUNTY ZONING CODE.
- NO BUILDINGS OR ANY KIND OF CONSTRUCTION SHALL BE PLACED ON UTILITY OR DRAINAGE EASEMENTS.
- NO STRUCTURES, TREES OR SHRUBS SHALL BE PLACED ON DRAINAGE EASEMENTS. TAKE PRECEDENCE.
- APPROVAL OF LANDSCAPING OR UTILITY EASEMENTS OTHER THAN WATER OR SEWER SHALL BE ONLY WITH APPROVAL OF ALL UTILITIES OCCUPYING SAME.
- WHEN DRAINAGE AND UTILITY EASEMENTS CROSS, DRAINAGE EASEMENTS SHALL TAKE PRECEDENCE.
- THERE SHALL BE NO BUILDINGS, STRUCTURES, ANY KIND OF CONSTRUCTION, TREES OR SHRUBS PLACED ON ANY LOTS OWNED BY THE NORTHERN PALM BEACH COUNTY WATER CONTROL DISTRICT, OR WATER MANAGEMENT EASEMENTS OR ON WATER MANAGEMENT HALFTRACK EASEMENTS, UNLESS APPROVED, IN WRITING FORM, BY THE SAID DISTRICT.

- D.E. - DRAINAGE EASEMENT
- U.E. - UTILITY EASEMENT
- L.A.E. - LIMITED ACCESS EASEMENT
- R. - RADIAL LINE
- G.C. - GOLF COURSE
- W.M.T. - WATER MANAGEMENT TRACT
- W.M.E. - WATER MANAGEMENT EASEMENT
- W.P.A. - WETLAND PRESERVATION AREA

ADD. BY [Signature]
CHECKED BY [Signature]

TAZ 797 28233/4/42
SUBDIVISION Old Marsh G.C.
BOOK 58 PAGE 69
FLOOR PLAN B PLAT NO. 1158
CLAD # 4A
BY PVD
PUD MAKE 7000033418

14
8