

FAIRFIELD'S LACUNA PLAT 2

A PART OF BALMORAL COUNTRY CLUB P.U.D.

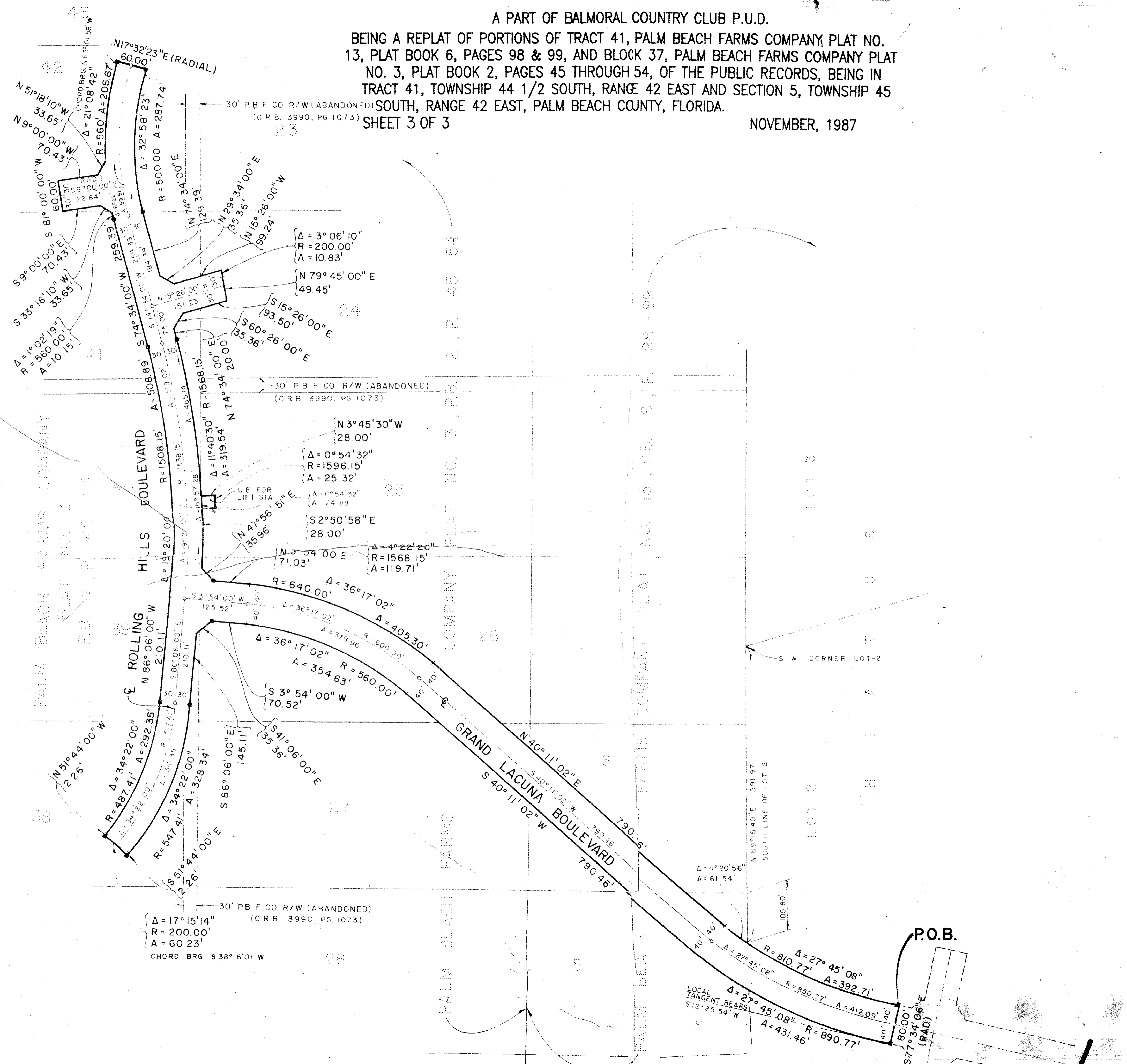
BEING A REPLAT OF PORTIONS OF TRACT 41, PALM BEACH FARMS COMPANY, PLAT NO. 13, PLAT BOOK 6, PAGES 98 & 99, AND BLOCK 37, PALM BEACH FARMS COMPANY PLAT NO. 3, PLAT BOOK 2, PAGES 45 THROUGH 54, OF THE PUBLIC RECORDS, BEING IN TRACT 41, TOWNSHIP 44 1/2 SOUTH, RANGE 42 EAST AND SECTION 5, TOWNSHIP 45 SOUTH, RANGE 42 EAST, PALM BEACH COUNTY, FLORIDA.

SHEET 3 OF 3

NOVEMBER, 1987

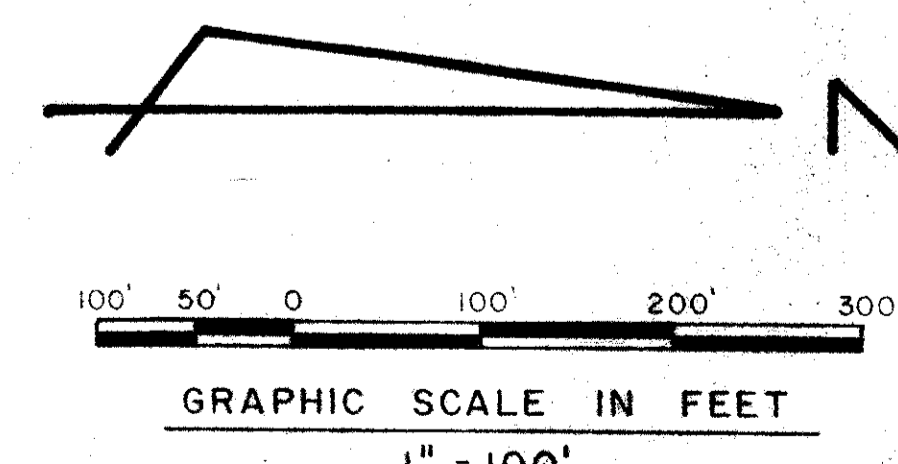
118

STATE OF FLORIDA
 COUNTY OF PALM BEACH
 This Plat was filed for record at _____
 on this _____ day of _____ 19____
 and duly recorded in Plat Book No. _____
 on Page _____
 John A. Dunkle, Clerk of the Circuit Court
 By _____ J.C.



TAZ 740 5/45/82
 SURVEYSION * Fairfield's Lacuna
 BOOK 58 B
 PAGE 44
 PLAT 118
 P.T. 33467
 C.E.P.U.D.
 T.M. BAY
 Plat 2

Ret 81-233



0199-002

58/118

Landmark Surveying & Mapping Inc.
 1850 FOREST HILL BOULEVARD
 PH: (305) 433-5405 SUITE 100 W.P.B. FLORIDA

FAIRFIELD'S LACUNA PLAT 2