

DRAWING NUMBER
58/119

DRAWING NUMBER

DRAWING NUMBER

DRAWING NUMBER

PLAN HOLD CORPORATION • IRVINE, CALIFORNIA
REGISTERED BY NUMBER 02548

A PLAT OF

SHEARWATER AT JONATHAN'S LANDING P.U.D.,

JUNE, 1987

LYING IN SECTION 7, TOWNSHIP 41 S., RANGE 43 E.,

ALSO BEING A REPLAT OF PARCEL "O"

JONATHAN'S LANDING PLAT SEVEN P.U.D.,

AS RECORDED IN PLAT BOOK 47, PAGES 51 AND 52,

PUBLIC RECORDS OF PALM BEACH COUNTY, FLORIDA.

SHEET 1 OF 4

DESCRIPTION

PARCEL "O", JONATHAN'S LANDING PLAT SEVEN P.U.D., AS RECORDED IN PLAT BOOK 47, PAGES 51 AND 52, PUBLIC RECORDS OF PALM BEACH COUNTY, FLORIDA.

CONTAINING 11.587 ACRES.

DEDICATION

STATE OF FLORIDA
COUNTY OF PALM BEACH

S.S.

KNOW ALL MEN BY THESE PRESENTS THAT JONATHAN'S LANDING, INC., A DELAWARE CORPORATION, LICENSED TO DO BUSINESS IN THE STATE OF FLORIDA, OWNER OF THE LAND SHOWN HEREON AS SHEARWATER AT JONATHAN'S LANDING P.U.D., BEING IN SECTION 7, TOWNSHIP 41 SOUTH, RANGE 43 EAST, PALM BEACH COUNTY, FLORIDA AND MORE PARTICULARLY DESCRIBED ABOVE, HAS CAUSED THE SAME TO BE SURVEYED AND PLATTED AS SHOWN HEREON AND DOES HEREBY DEDICATE AS FOLLOWS:

1. STREETS:

ACCESS TRACT "R", AS SHOWN HEREON, IS HEREBY DEDICATED TO THE SHEARWATER AT JONATHAN'S LANDING HOMEOWNERS ASSOCIATION, INC., ITS SUCCESSORS AND/OR ASSIGNS FOR INGRESS/EGRESS, UTILITY AND DRAINAGE PURPOSES, AND WITH PERPETUAL MAINTENANCE OBLIGATION OF SAID ASSOCIATION, ITS SUCCESSORS AND/OR ASSIGNS, WITHOUT RECOURSE TO PALM BEACH COUNTY, FLORIDA.

2. EASEMENTS:

A. THE UTILITY EASEMENTS, AS SHOWN HEREON, ARE HEREBY DEDICATED IN PERPETUITY FOR THE CONSTRUCTION AND MAINTENANCE OF UTILITIES, INCLUDING CABLE AND ARCH SYSTEM.

B. THE DRAINAGE EASEMENTS, AS SHOWN HEREON, ARE HEREBY DEDICATED TO THE J.L. PROPERTY OWNERS ASSOCIATION, INC. AND SHEARWATER AT JONATHAN'S LANDING HOMEOWNERS ASSOCIATION, INC. FOR THE CONSTRUCTION AND MAINTENANCE OF DRAINAGE.

C. THE LIMITED ACCESS EASEMENT, AS SHOWN HEREON, IS HEREBY DEDICATED TO THE BOARD OF COUNTY COMMISSIONERS OF PALM BEACH COUNTY, FLORIDA, FOR THE PURPOSES OF CONTROL AND JURISDICTION OVER ACCESS RIGHTS.

D. TRACTS A THROUGH G AND TRACTS I THROUGH K, AS SHOWN HEREON, ARE HEREBY DEDICATED IN PERPETUITY TO SHEARWATER AT JONATHAN'S LANDING HOMEOWNERS ASSOCIATION, INC. FOR LANDSCAPE PURPOSES.

E. TRACT H, AS SHOWN HEREON IS HEREBY DEDICATED IN PERPETUITY TO SHEARWATER AT JONATHAN'S LANDING HOMEOWNERS ASSOCIATION, INC. FOR RECREATION PURPOSES.

F. THE RECIPROCAL MAINTENANCE EASEMENTS (R.M.E.) SHOWN HEREON, ARE HEREBY DEDICATED TO THE ADJOINING LOT OWNERS FOR BUILDING MAINTENANCE AND BUILDING OVERHANG PURPOSES.

IN WITNESS WHEREOF, THE ABOVE NAMED CORPORATION HAS CAUSED THESE PRESENTS TO BE SIGNED IN ITS NAME AND ITS CORPORATE SEAL TO BE AFFIXED HERETO BY AND WITH THE AUTHORITY OF ITS BOARD OF DIRECTORS, THIS 17th DAY OF August, 1987.

JONATHAN'S LANDING, INC., A DELAWARE CORPORATION

ATTEST: Robert M. Winter
ROBERT M. WINTER, AS ATTORNEY-IN-FACT, PURSUANT TO THAT CERTAIN POWER OF ATTORNEY RECORDED IN OFFICIAL RECORD BOOK 5124, PAGE 1973, PUBLIC RECORDS OF PALM BEACH COUNTY, FLORIDA

BY: Richard W. Plozman
RICHARD W. PLOZMAN, AS ATTORNEY-IN-FACT, PURSUANT TO THAT CERTAIN POWER OF ATTORNEY RECORDED IN OFFICIAL RECORD BOOK 5124, PAGE 1973, PUBLIC RECORDS OF PALM BEACH COUNTY, FLORIDA

ACKNOWLEDGEMENT

STATE OF FLORIDA
COUNTY OF PALM BEACH

S.S.

BEFORE ME, PERSONALLY APPEARED RICHARD W. PLOZMAN AND ROBERT M. WINTER AS ATTORNEYS-IN-FACT OF JONATHAN'S LANDING, INC., A DELAWARE CORPORATION, AND THEY ACKNOWLEDGED TO AND BEFORE ME THAT THEY EXECUTED SUCH INSTRUMENT AND THAT THE SEAL AFFIXED TO THE FOREGOING INSTRUMENT IS THE CORPORATE SEAL OF SAID CORPORATION AND THAT IT WAS AFFIXED TO SAID INSTRUMENT BY DUE AND REGULAR CORPORATE AUTHORITY AND THAT SAID INSTRUMENT IS THE FREE ACT AND DEED OF SAID CORPORATION.

WITNESS MY HAND AND OFFICIAL SEAL THIS 17th DAY OF August, 1987.

MY COMMISSION EXPIRES: August 19, 1988

Richard W. Plozman
NOTARY PUBLIC
STATE OF FLORIDA AT LARGE

SURVEYOR'S CERTIFICATION

STATE OF FLORIDA
COUNTY OF MARTIN

S.S.

I HEREBY CERTIFY THAT THIS PLAT WAS PREPARED AND DELINEATED UNDER MY DIRECTION AND SUPERVISION AND IS A CORRECT REPRESENTATION OF THE LANDS HEREON DESCRIBED AS SURVEYED BY DAILEY AND ASSOCIATES AND THAT THE SURVEY DATA COMPLIES WITH ALL THE REQUIREMENTS OF CHAPTER 177, FLORIDA STATUTES, AS AMENDED, AND ORDINANCES OF PALM BEACH COUNTY, FLORIDA.

LINDAHL, BROWNING, FERRARI & HELLSTROM, INC.

Vincent J. Noble
VINCENT J. NOBLE
REGISTERED LAND SURVEYOR
FLORIDA CERTIFICATE NO. 4169

SURVEYOR'S CERTIFICATION

STATE OF FLORIDA
COUNTY OF PALM BEACH

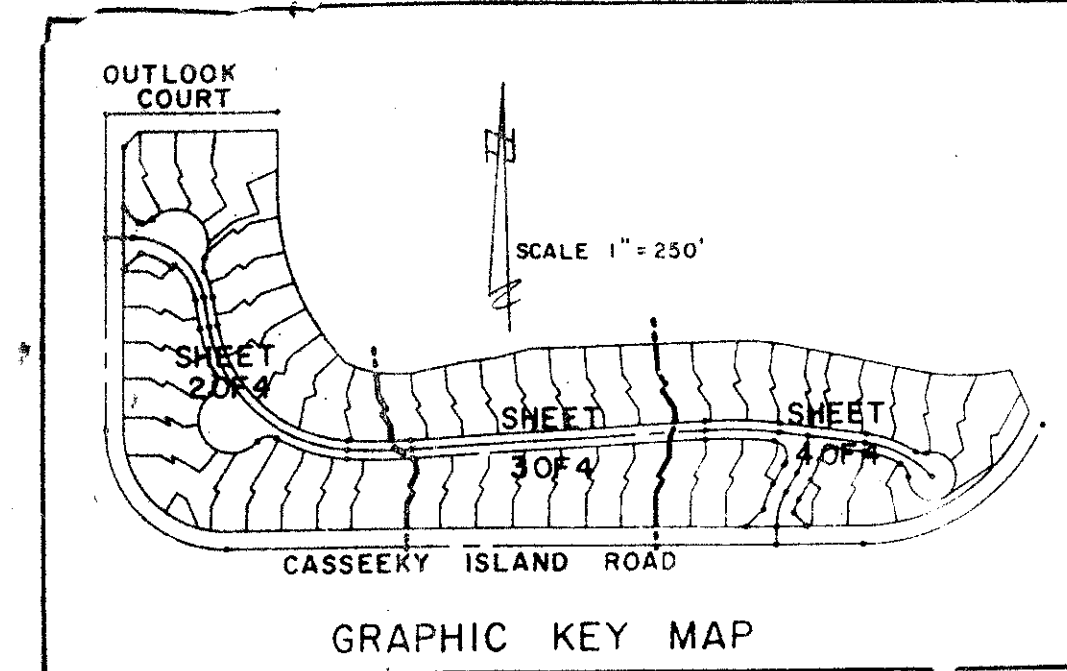
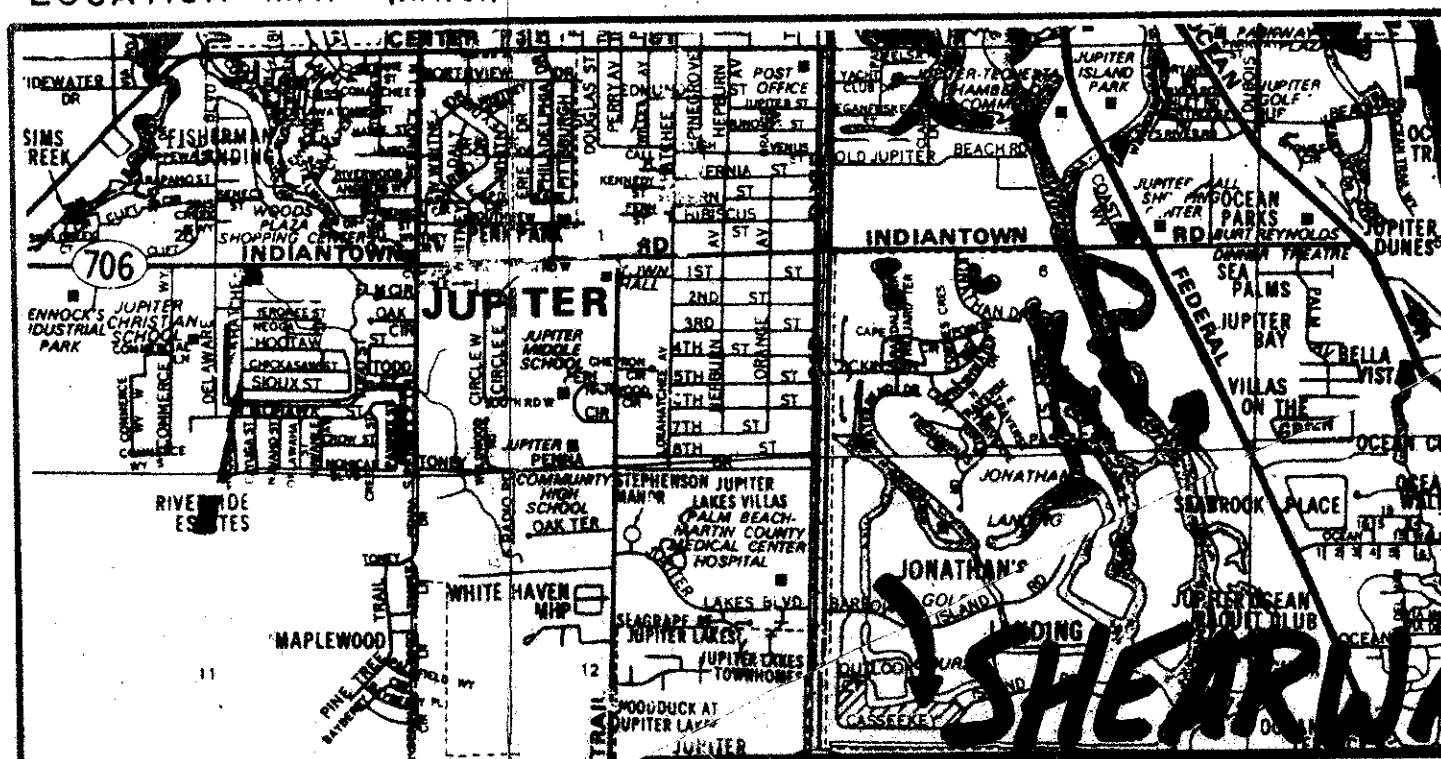
S.S.

KNOW ALL MEN BY THESE PRESENTS, THAT THE UNDERSIGNED DOES HEREBY CERTIFY THAT ON 8/14, 1987, THEY COMPLETED THE SURVEY OF LANDS AS SHOWN ON THE FOREGOING PLAT, THAT SAID PLAT IS A CORRECT REPRESENTATION OF THE LANDS THEREIN DESCRIBED AND PLATTED; THAT PERMANENT REFERENCE MONUMENTS HAVE BEEN PLACED AS REQUIRED BY LAW, AND THAT PERMANENT CONTROL POINTS WILL BE SET UNDER THE GUARANTEE POSTED WITH THE BOARD OF COUNTY COMMISSIONERS OF PALM BEACH COUNTY, FLORIDA, FOR THE REQUIRED IMPROVEMENTS, AND THAT THE SURVEY DATA COMPLIES WITH ALL THE REQUIREMENTS OF CHAPTER 177, PART 1, FLORIDA STATUTES, AS AMENDED, AND ORDINANCES OF PALM BEACH COUNTY, FLORIDA.

DAILEY AND ASSOCIATES

James M. O'Brien
JAMES M. O'BRIEN
REGISTERED LAND SURVEYOR NO. 1652
STATE OF FLORIDA

LOCATION MAP (n.t.s.)



TITLE CERTIFICATION

STATE OF FLORIDA
COUNTY OF PALM BEACH

S.S.

I, PAUL C. WOLFE, A DULY LICENSED ATTORNEY IN THE STATE OF FLORIDA, DO HEREBY CERTIFY THAT I HAVE EXAMINED THE TITLE TO THE HERON DESCRIBED PROPERTY; THAT I FIND THE TITLE TO THE PROPERTY IS VESTED IN JONATHAN'S LANDING, INC., A DELAWARE CORPORATION; THAT THE CURRENT TAXES HAVE BEEN PAID; AND THAT I FIND THAT THE PROPERTY IS FREE OF ENCUMBRANCES.

DATE: August 28, 1987

Paul C. Wolfe
PAUL C. WOLFE
ATTORNEY AT LAW

COUNTY APPROVAL

STATE OF FLORIDA
COUNTY OF PALM BEACH

S.S.

BOARD OF COUNTY COMMISSIONERS
OF PALM BEACH COUNTY, FLORIDA:

THIS PLAT IS HEREBY APPROVED FOR RECORD THIS 24th DAY OF NOVEMBER, 1987

BY: Carol Roberts
CAROL ROBERTS, CLERK

ATTEST: JOHN B. DUNKLE, CLERK

BY: Ruth H. Conpton
RUTH H. CONPTON
DEPUTY CLERK

COUNTY ENGINEER:

THIS PLAT IS HEREBY APPROVED FOR RECORD THIS 24th DAY OF NOVEMBER, 1987

BY: H.P. Kahlert
H.P. KAHLERT, P.E., COUNTY ENGINEER

TABULAR DATA

NUMBER OF LOTS = 48
TOTAL AREA = 11.587 ACRES
UNITS PER ACRE = 4.11
AREA TRACTS A-K = 1,064 ACRES

Plat. 79-230
0261-004
58/119

LINDAHL, BROWNING, FERRARI & HELLSTROM, INC.
CONSULTING ENGINEERS, PLANNERS & SURVEYORS

119

COUNTY OF PALM BEACH
STATE OF FLORIDA
This Plat was filed for record on 10-22-87
at the day of December
1987, and duly recorded in Plat Book No.
58 on page 119, Book 122
JOHN B. DUNKLE, Clerk Circuit Court
Palma Beach, Fla. D.C.

