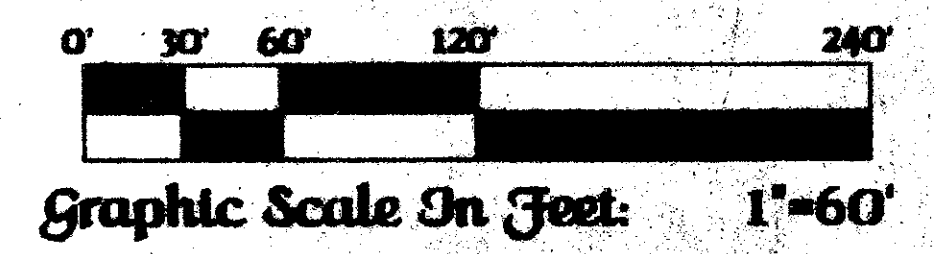
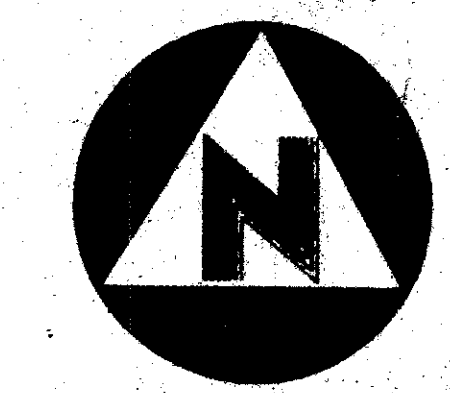
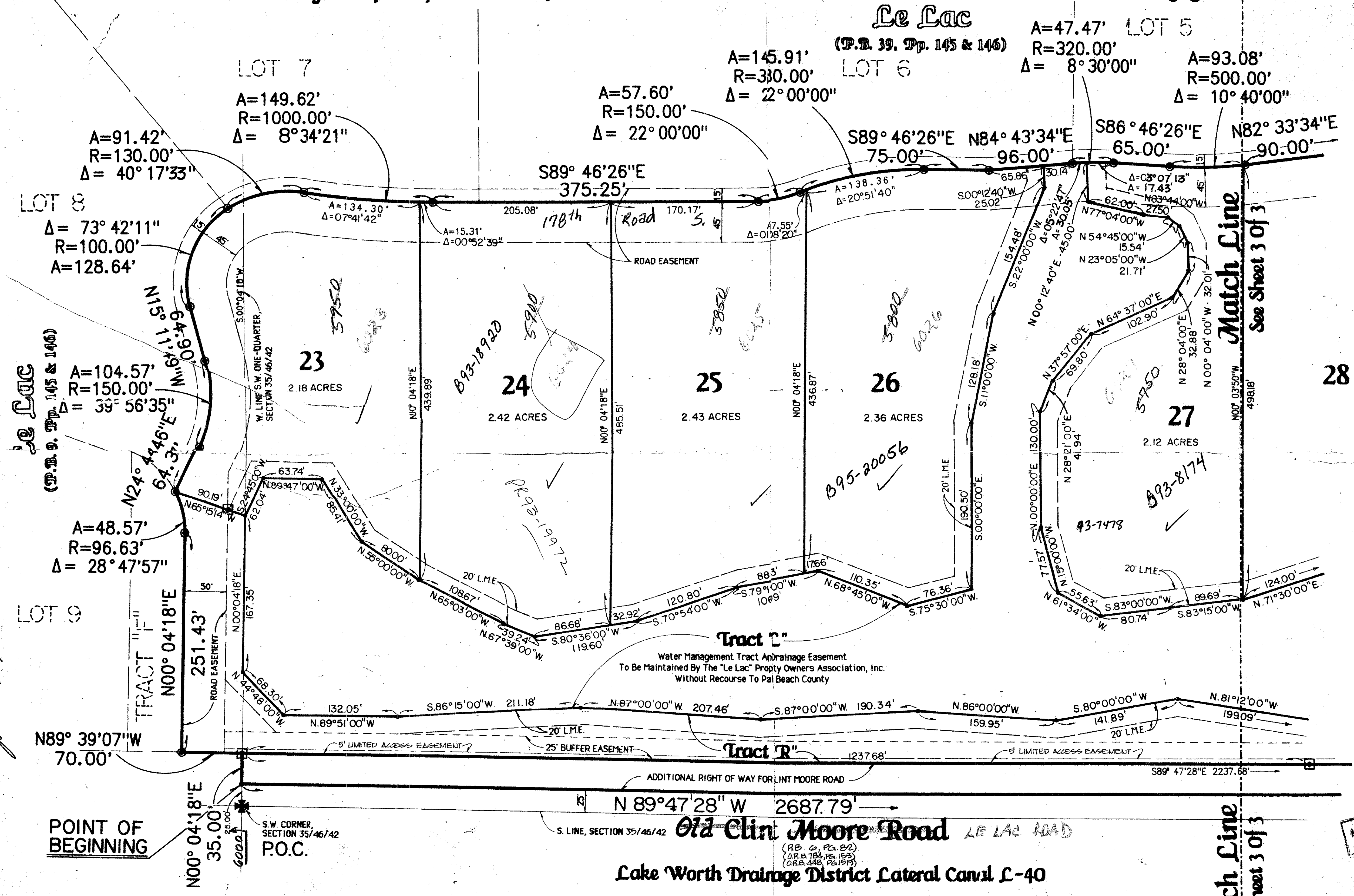


- Le Lac Plat 3 -

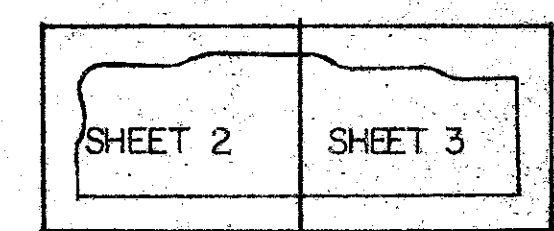
May, A.D. Nineteen Hundred Eighty Seven
 A Part Of Le Lac, A Planned Unit Development, Lying In Sections 34 and 35, Township 46 South, Range 42 East, Palm Beach County, Florida
 Being A Replat Of A Portion Of "Le Lac", (P.B. 39, Pp. 145 & 146), Public Records, Palm Beach County, Florida

State of Florida)
 County of Palm Beach)
 This Plat was filed for record
 at _____ this _____ day of _____
 A.D. 1987, and
 duly recorded in Plat Book
 _____ on Pages _____ thru _____
 John B. Dunkle,
 Clerk of the Circuit Court.
 By _____
 Deputy Clerk



SUBDIVISION * *Le Lac #3*
 BOOK 54
 FLOOD MAP * 57-2708
 QUAD * 37
 SE
 ZIP CODE 33431
 PUD NAME

- Legend:**
- Denotes a permanent reference monument (P.R.M.)
 - Denotes a permanent control point (P.C.P.)
 - D.E. Denotes a drainage easement.
 - U.E. Denotes a utility easement.
 - L.A.E. Denotes a limited access easement.
 - L.M.E. Denotes a lake maintenance easement.



This instrument was prepared by Wm. R. Van Campen, R.L.S., in and for the offices of Bench Mark Land Surveying & Mapping, Inc., 4152 West Blue Heron Boulevard, Suite 121, Riviera Beach, FL, 33404

0272-001

BENCH MARK
 LAND SURVEYING & MAPPING, INC.
 WEST PALM BEACH, FLORIDA - RIVIERA BEACH, FLORIDA

-Record Plat-
Le Lac Plat 3

58/131