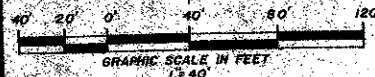
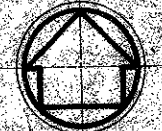


58/180



PREPARED BY:  
**CRAIG A. SMITH & ASSOCIATES**  
 CONSULTING ENGINEERS & SURVEYORS  
 1000 WEST McNAB ROAD  
 POMPANO BEACH, FLORIDA, 33069  
 BY: FREDERICK E. CONRAD, III, P.L.S. No. 2816  
 MAY 1987

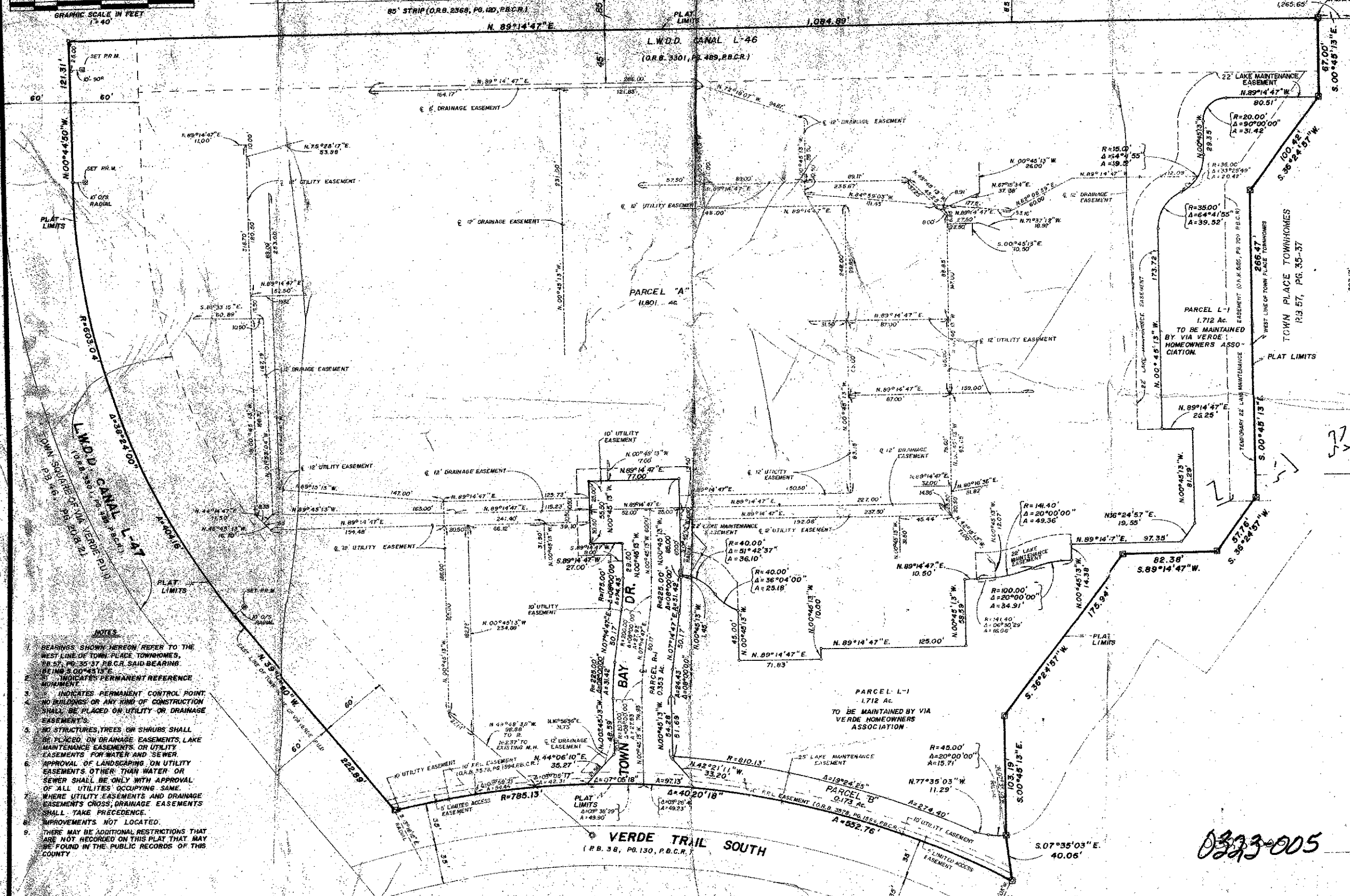
# THE VININGS II AT TOWN PLACE

BEING A PORTION OF  
 THE NORTHWEST ONE-QUARTER OF SECTION 23, TOWNSHIP 47 SOUTH, RANGE 42 EAST,  
 PALM BEACH COUNTY, FLORIDA.

A PART OF VIA VERDE, P.U.D.

SHEET 2 OF 2 SHEETS

STATE OF FLORIDA } S.S.  
 COUNTY OF PALM BEACH }  
 THIS PLAT WAS FILED FOR  
 RECORD AT THIS  
 DAY OF \_\_\_\_\_, 1987, A.D.,  
 AND DULY RECORDED IN PLAT BOOK  
 NO. \_\_\_\_\_ ON PAGE  
 AND  
 JOHN B. DUNKLE, CLERK  
 BY: \_\_\_\_\_, D.C.



- NOTES:**
1. BEARINGS SHOWN HEREON REFER TO THE WEST LINE OF TOWN PLACE TOWNHOMES, BEING S. 00° 45' 13" E. P.B.C. SAID BEARING BEING S. 00° 45' 13" E.
  2. "P" INDICATES PERMANENT REFERENCE MONUMENT.
  3. "C" INDICATES PERMANENT CONTROL POINT.
  4. NO BUILDINGS OR ANY KIND OF CONSTRUCTION SHALL BE PLACED ON UTILITY OR DRAINAGE EASEMENTS.
  5. NO STRUCTURES, TREES OR SHRUBS SHALL BE PLACED ON DRAINAGE EASEMENTS, LAKE MAINTENANCE EASEMENTS OR UTILITY EASEMENTS FOR WATER AND SEWER.
  6. APPROVAL OF LANDSCAPING ON UTILITY EASEMENTS OTHER THAN WATER OR SEWER SHALL BE ONLY WITH APPROVAL OF ALL UTILITIES OCCUPYING SAME.
  7. WHERE UTILITY EASEMENTS AND DRAINAGE EASEMENTS CROSS, DRAINAGE EASEMENTS SHALL TAKE PRECEDENCE.
  8. IMPROVEMENTS NOT LOCATED.
  9. THERE MAY BE ADDITIONAL RESTRICTIONS THAT ARE NOT RECORDED ON THIS PLAT THAT MAY BE FOUND IN THE PUBLIC RECORDS OF THIS COUNTY.

SUBDIVISION: The Vinings II at Town Place  
 FLOOD ZONE: 100 Year Flood Zone  
 SE PUD: 100 Year Flood Zone  
 PUD NAME: 100 Year Flood Zone

0323-005

THE VININGS II AT TOWN PLACE

58/180