

WHISPER WALK SECTION "C"

SITUATE IN SECTION 5, TOWNSHIP 47 SOUTH, RANGE 42 EAST, PALM BEACH COUNTY, FLORIDA, BEING A REPLAT OF A PORTION OF TRACT A OF THE BOUNDARY PLAT OF WHISPER WALK, A P.U.D. (P.B. 43, PG. 189-191)

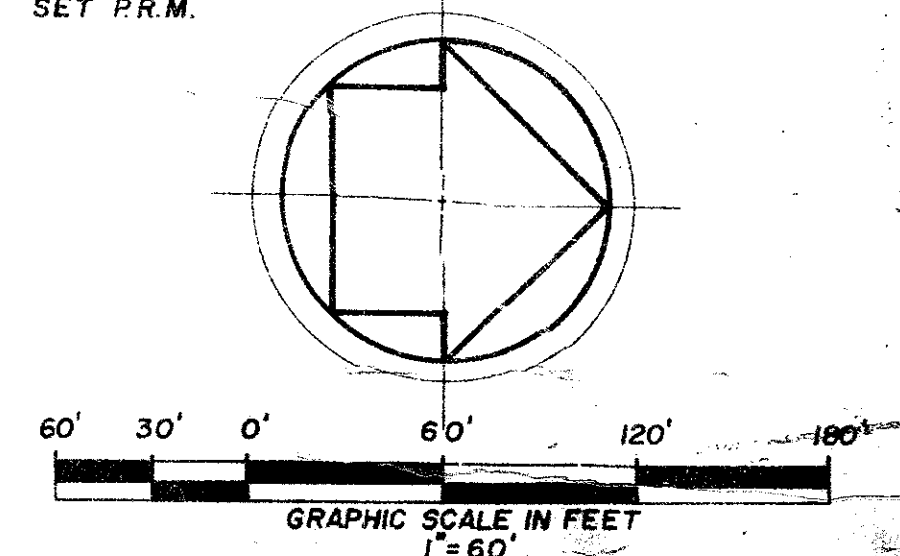
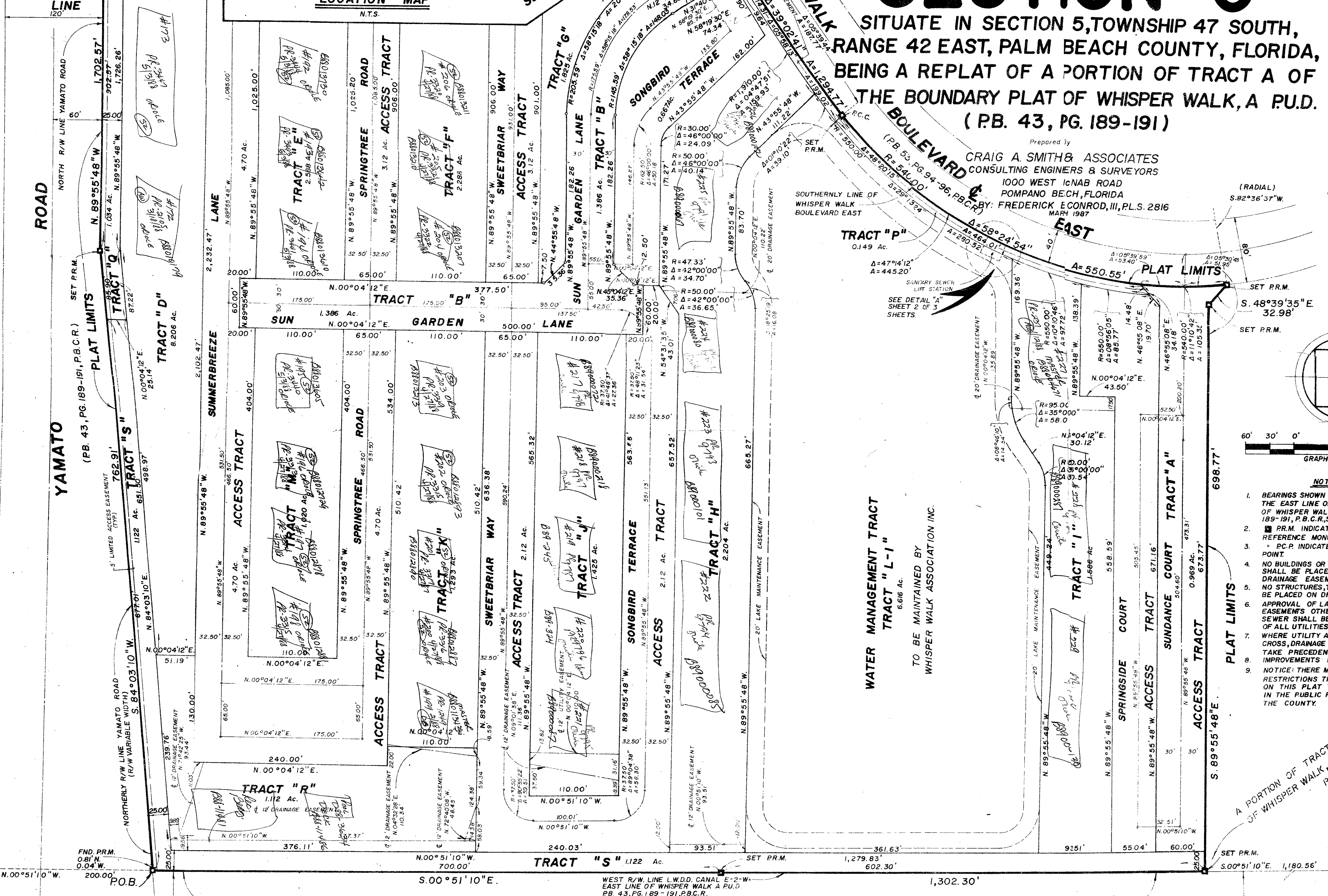
STATE OF FLORIDA
COUNTY OF PALM BEACH S.S.
THIS PLAT WAS FILED FOR RECORD AT _____, THIS DAY OF _____, 1987, A.D., AND DULY RECORDED IN PLAT BOOK No. _____ ON PAGES _____ AND _____
BY: JOHN B. DUNKLE, CLERK

Prepared by
CRAIG A. SMITH & ASSOCIATES
CONSULTING ENGINEERS & SURVEYORS
1000 WEST McNAB ROAD
POMPAHO BEACH, FLORIDA
PREPARED BY: FREDERICK E. CONROD, III, P.L.S. 2816
MAY 1987

"A" SEE SHEET 2 OF 3 SHEETS
MATCH LINE

LOCATION MAP
N.T.S.

SEE SHEET 2 OF 3 SHEETS
MATCH LINE



- NOTES**
- BEARINGS SHOWN HEREON REFER TO THE EAST LINE OF THE BOUNDARY PLAT OF WHISPER WALK, A P.U.D., P.B. 43, PG. 189-191, P.B.C.R., SAID BEARING BEING 3.00°51'10" E.
 - PR.M. INDICATES PERMANENT REFERENCE MONUMENT.
 - P.C.P. INDICATES PERMANENT CONTROL POINT.
 - NO BUILDINGS OR ANY KIND OF CONSTRUCTION SHALL BE PLACED ON UTILITY OR DRAINAGE EASEMENTS.
 - NO STRUCTURES, TREES OR SHRUBS SHALL BE PLACED ON DRAINAGE EASEMENTS.
 - APPROVAL OF LANDSCAPING ON UTILITY EASEMENTS OTHER THAN WATER OR SEWER SHALL BE ONLY WITH APPROVAL OF ALL UTILITIES OCCUPYING SAME.
 - WHERE UTILITY AND DRAINAGE EASEMENTS CROSS, DRAINAGE EASEMENTS SHALL TAKE PRECEDENCE.
 - IMPROVEMENTS NOT SHOWN.
 - NOTICE: THERE MAY BE ADDITIONAL RESTRICTIONS THAT ARE NOT RECORDED ON THIS PLAT THAT MAY BE FOUND IN THE PUBLIC RECORDS OF THE COUNTY.

A PORTION OF TRACT A, BOUNDARY PLAT OF WHISPER WALK, A P.U.D., P.B. 43, PG. 189-191, P.B.C.R.

Ret-80-229

TAZ 170
SUPERVISOR - Whisper Walk 'C'
FLOOD EASE 182
GRAB # 39
SE PUD
PUD MAP

S.E. CORNER WHISPER WALK A P.U.D. P.B. 43, PG. 189-191, P.B.C.R.

N.E. CORNER WHISPER WALK A P.U.D. P.B. 43, PG. 189-191, P.B.C.R.

WHISPER WALK SECTION "C" 58/183

0339-003