

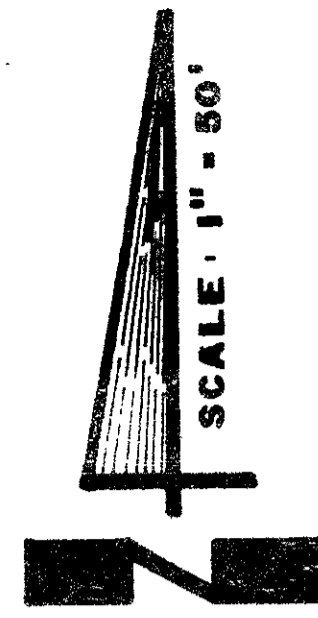
# WHISPERING OAKS

( A P . R . D . )

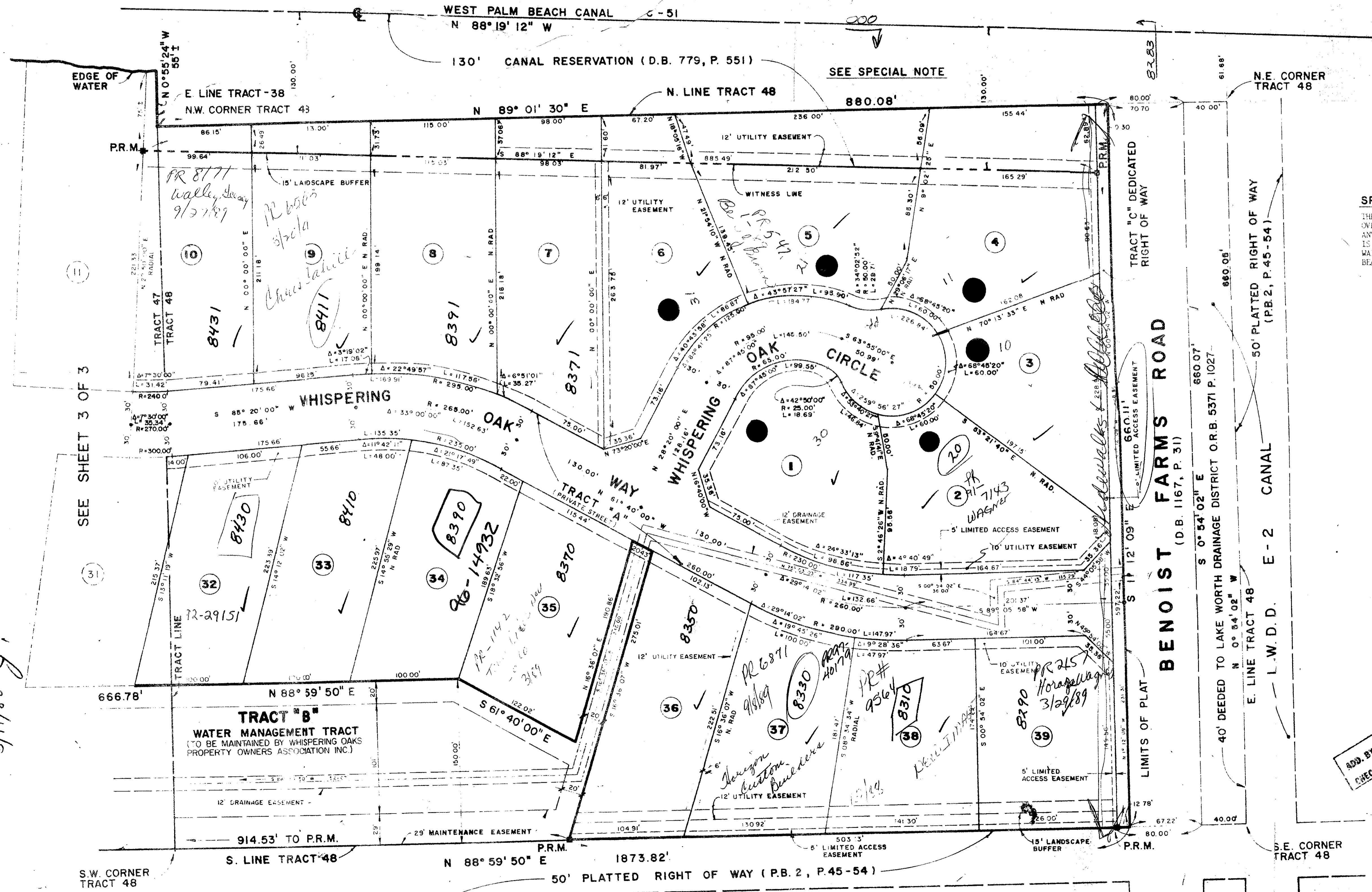
SITUATE IN SECTION 5, TOWNSHIP 44 SOUTH, RANGE 42 EAST, PALM BEACH COUNTY, FLORIDA.  
BEING A REPLAT OF A PORTION OF BLOCK 7, TRACTS 38, 47 & 48 OF PALM BEACH FARMS COMPANY  
PLAT NO. 3 AS IN PLAT BOOK 2, PAGES 45 THRU 54.

JUNE 1987

SHEET 2 OF 3



STATE OF FLORIDA  
COUNTY OF PALM BEACH  
THIS PLAT WAS FILED FOR  
RECORD  
THIS DAY OF  
AD, 1987 AND DULY RECORDED  
IN PLAT BOOK ON PAGES  
AND  
JOHN B. DUNKLE, CLERK  
BY



**SPECIAL NOTE**  
THE SIXTH FLORIDA WATER MANAGEMENT DISTRICT HAS JURISDICTION OVER THIS EASEMENT FOR THE OPERATION AND MAINTENANCE OF CANAL 51. ANY USE OF THE EASEMENT WITHOUT A VALID PERMIT FROM THE DISTRICT IS PROHIBITED. FOR PERMIT APPLICATIONS WRITE TO: SOUTH FLORIDA WATER MANAGEMENT DISTRICT, POST OFFICE BOX 24680, WEST PALM BEACH, FLORIDA, 33416-4680 OR CALL 305-686-3800.

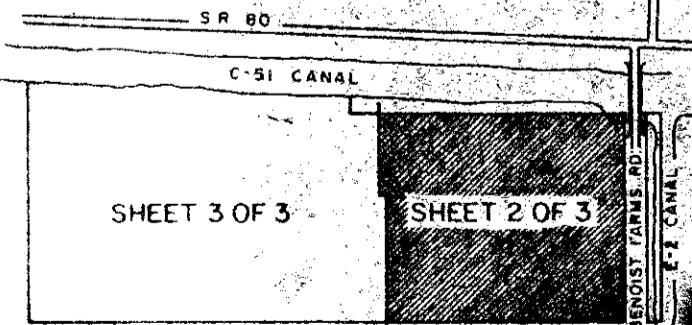
**SIDEWALK REQUIRED**  
See Design 77's Permit  
Co. Bay 1/1/82

Per. 86-108  
RTS P.R.D.  
Assoc. #0001

SUBDIVISION \* Whispering Oaks  
BOOK 58  
PAGE 185  
CLASS B  
CLASS 47  
RECORDED 86-108  
DATE 3/11/87

TAZ 733  
3/11/87

APP. BY  
CHECKED BY



**SIDEWALK REQUIRED** KEY MAP

*Whispering Oaks*

Weyant & Associates, Inc.  
Consulting Engineers