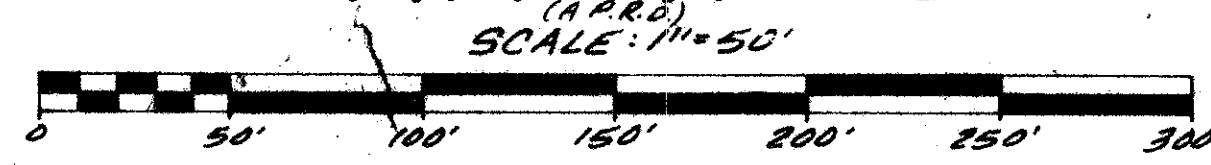
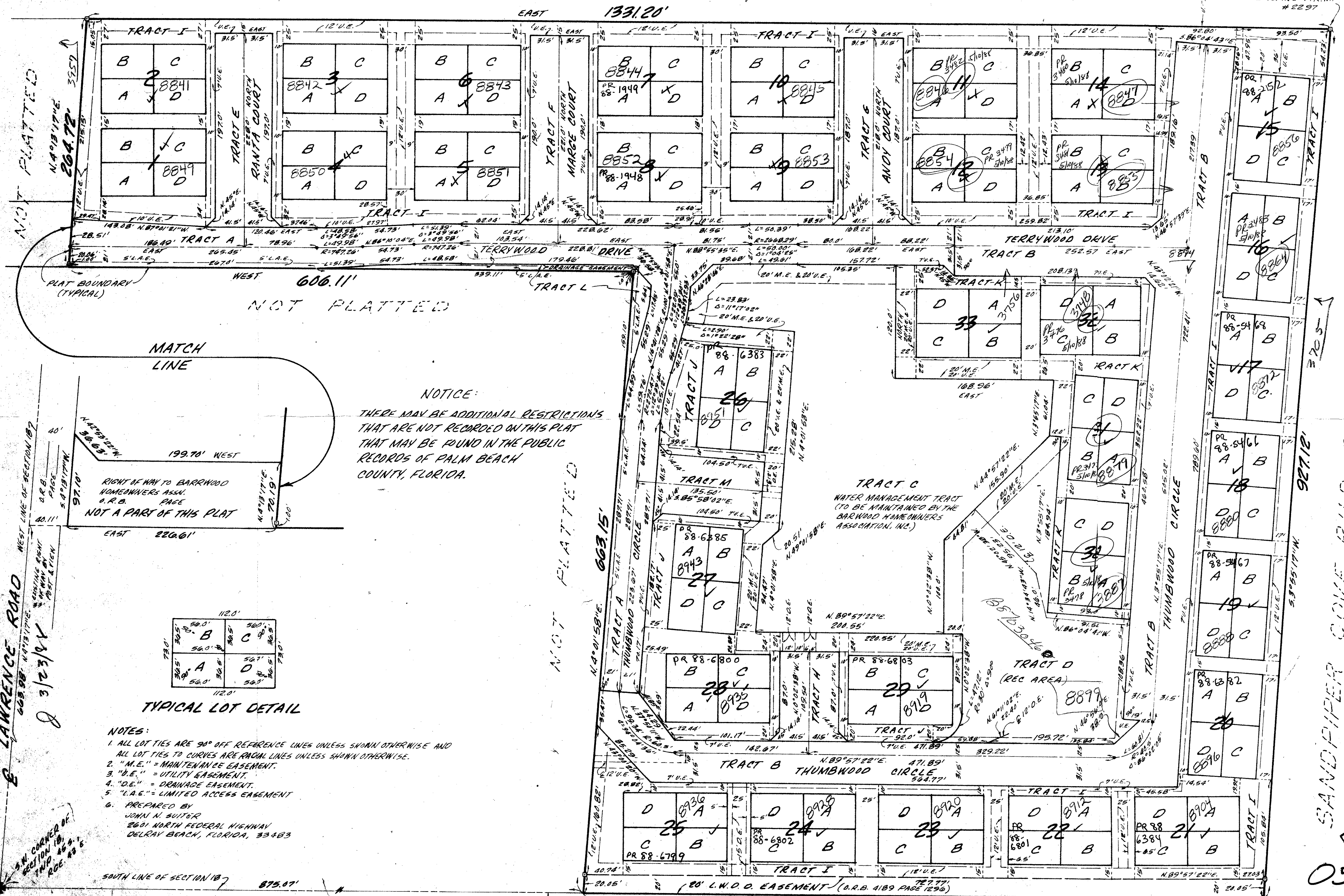


PLAT OF BARRWOOD



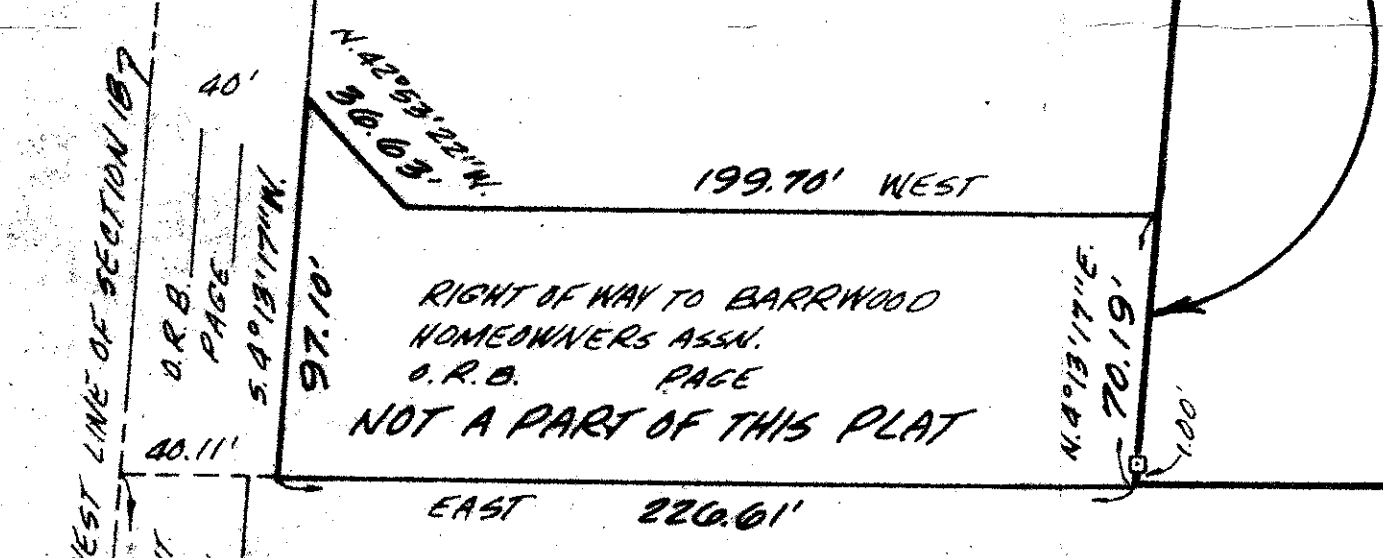
SANDPIPER COVE P.U.D. PLAT BOOK 56 PAGE 1



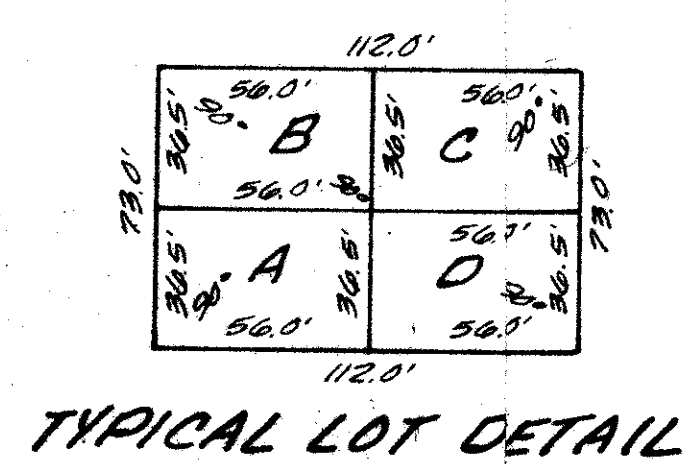
NOT PLATTED

PLAT BOUNDARY (TYPICAL)

MATCH LINE



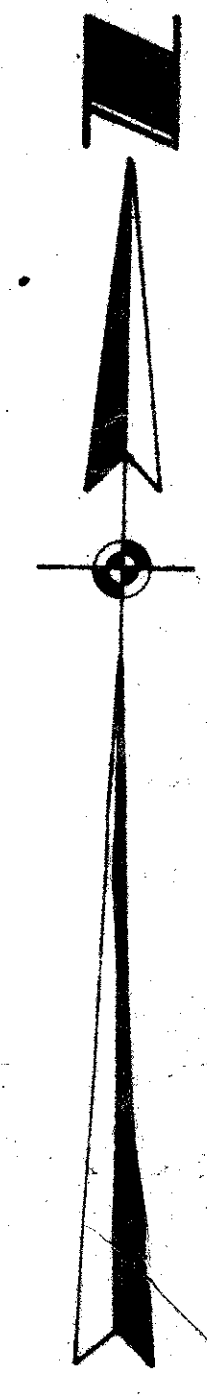
NOTICE: THERE MAY BE ADDITIONAL RESTRICTIONS THAT ARE NOT RECORDED IN THIS PLAT THAT MAY BE FOUND IN THE PUBLIC RECORDS OF PALM BEACH COUNTY, FLORIDA.



- NOTES: 1. ALL LOT TIES ARE 90° OFF REFERENCE LINES UNLESS SHOWN OTHERWISE AND ALL LOT TIES TO CURVES ARE RADIAL LINES UNLESS SHOWN OTHERWISE. 2. "M.E." = MAINTENANCE EASEMENT. 3. "U.E." = UTILITY EASEMENT. 4. "D.E." = DRAINAGE EASEMENT. 5. "L.A.E." = LIMITED ACCESS EASEMENT. 6. PREPARED BY JOHN N. SUITER 2601 NORTH FEDERAL HIGHWAY DELRAY BEACH, FLORIDA, 33403

SUBDIVISION - Barrwood BOOK 58 PAGE 195 FLOOD MAP - 190B QUAD 19 ZONING ZIP CODE 33436 PUD NAME Sandpiper Cove PUD TAZ H25

SANDPIPER COVE P.U.D. PLAT BOOK 56 PAGE 1



0527-001

BARRWOOD SHEETS 58/195 SHEETS