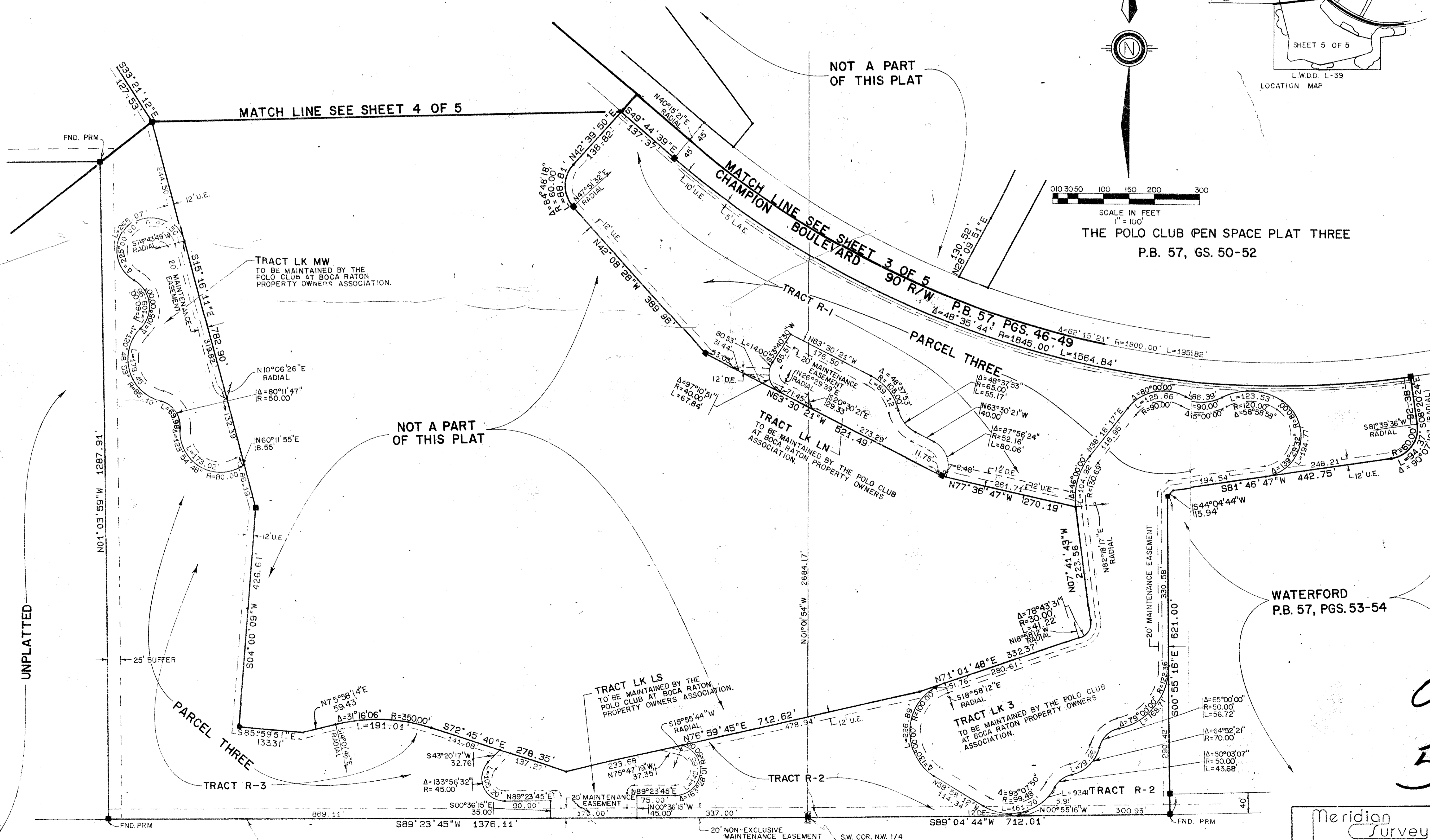
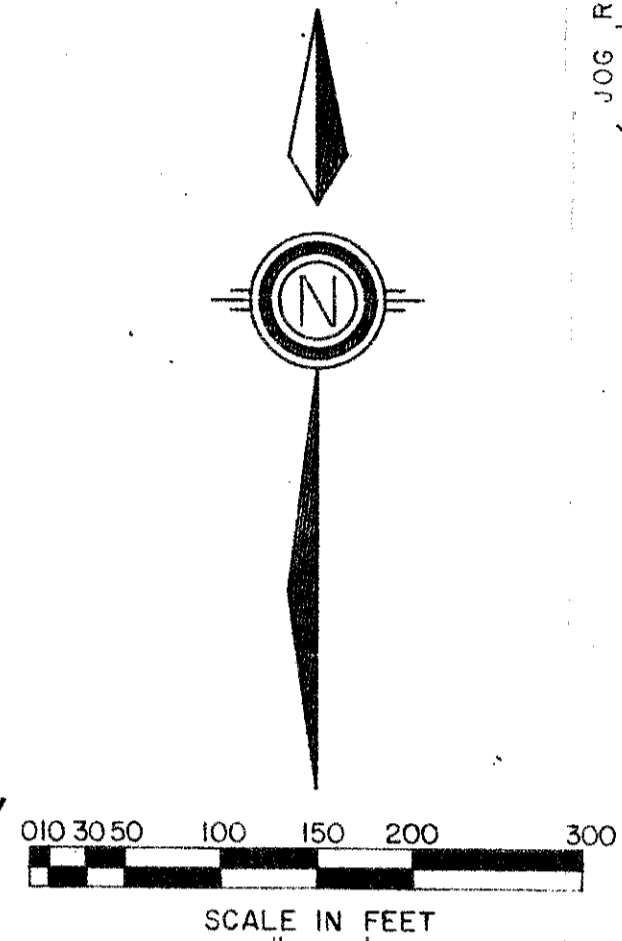
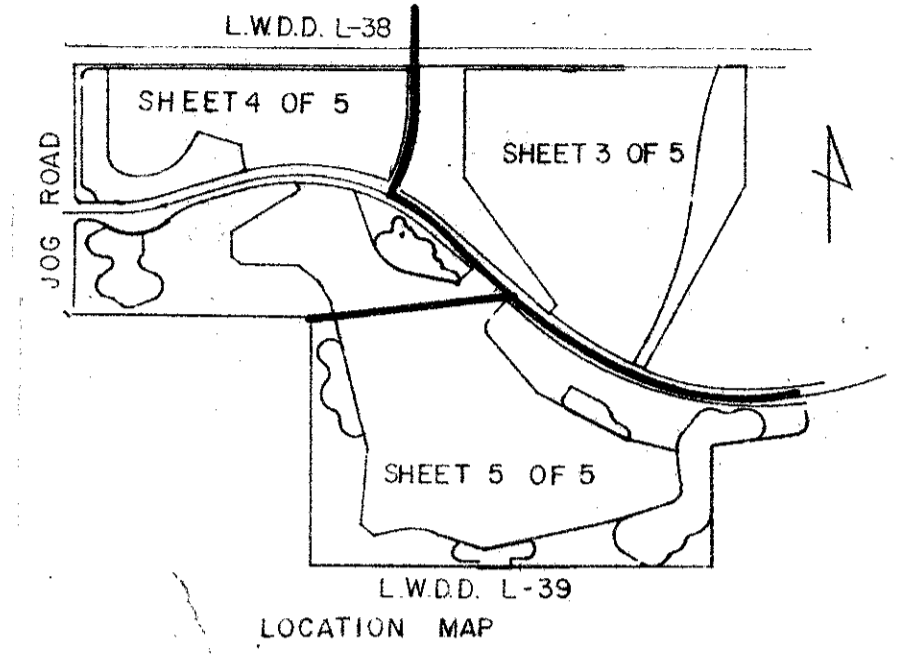


THE POLO CLUB OPEN SPACE PLAT FOUR
 PART OF THE POLO CLUB P.U.D.
 SITUATE IN SECTIONS 34 AND 35, TOWNSHIP 46 SOUTH, RANGE 42 EAST
 PALM BEACH COUNTY, FLORIDA.
 BEING A REPLAT OF A PORTION OF TRACTS I, II & III OF "THE POLO CLUB PLAT II"
 1987 SHEET 5 OF 5

STATE OF FLORIDA
 COUNTY OF PALM BEACH
 THIS PLAT WAS FILED FOR
 RECORD _____
 THIS _____ DAY OF _____
 AD, 1988 AND DULY RECORDED
 IN PLAT BOOK _____ ON PAGES
 _____ AND _____
 JOHN B. DUNKLE, CLERK
 BY: _____, D.C.



SUBDIVISION * Palm Beach
 BOOK 57 PAGE 12
 FLOOR MAP # 220.5
 PLAT # 37
 P.M.D. 24-71
 34 = 3943
 35 = 3944

WATERFORD
 P.B. 57, PGS. 53-54

0436-005
 59/12

Meridian Surveying and Mapping, Inc.		2000 LOMBARD STREET WEST PALM BEACH, FL	
DRAWN	M. H. C.	DATE	AUG. 1987
CHECKED	W. B. H.	SCALE	1" = 100'
DRAWING NO.	85-P4-126	THE POLO CLUB OPEN SPACE PLAT FOUR	