

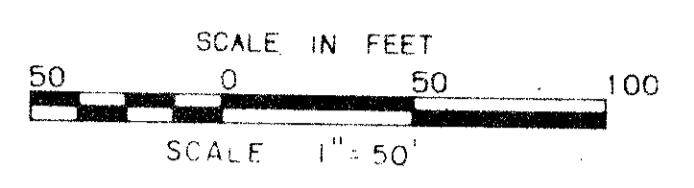
# A PLAT OF CASSEEKEY ISLAND

## AT JONATHAN'S LANDING P.U.D.

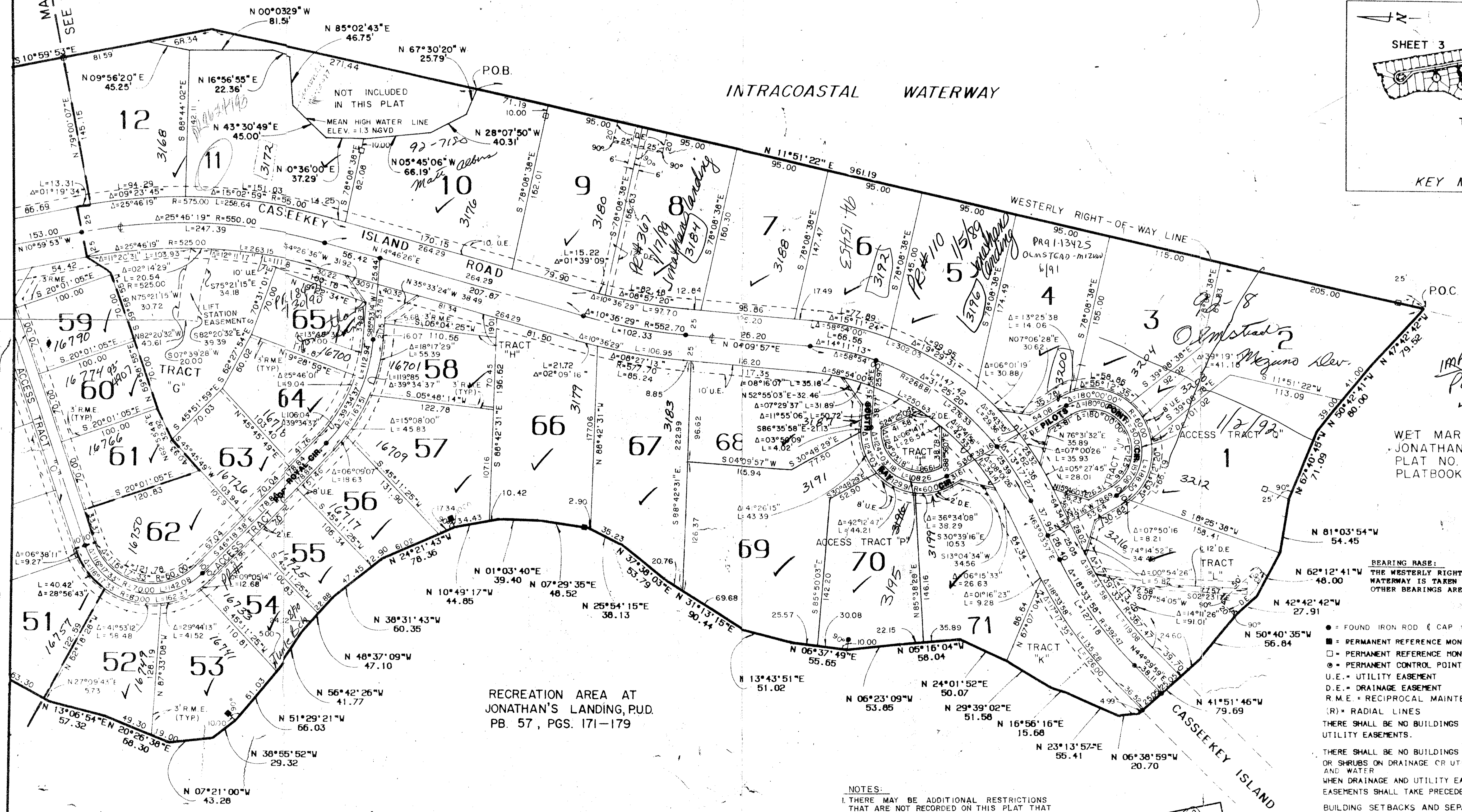
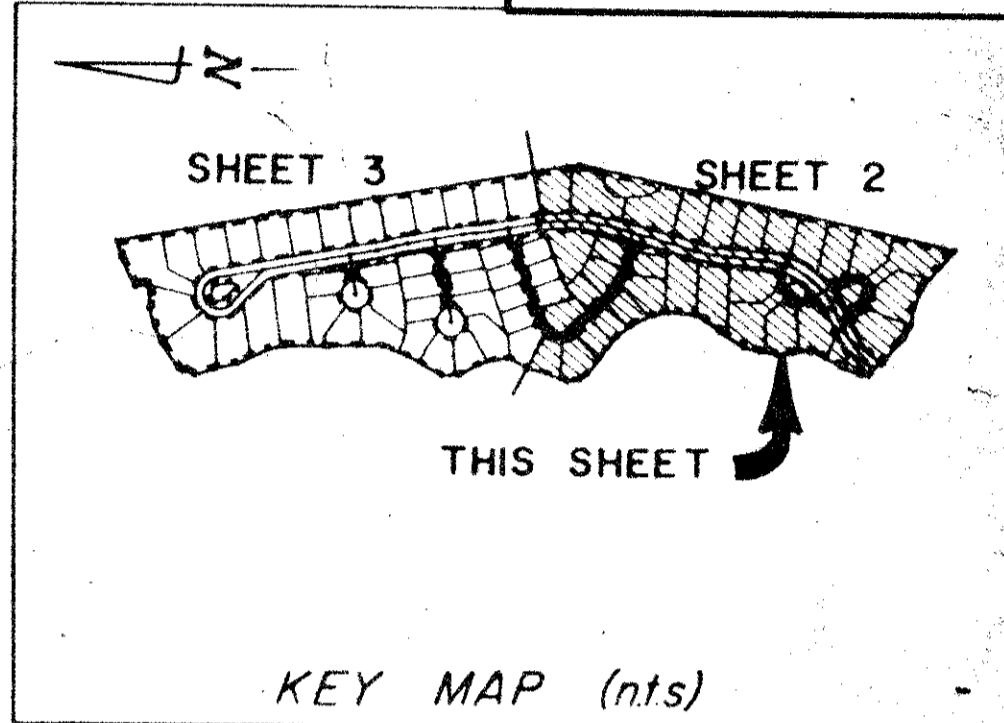
BEING A REPLAT OF A PORTION OF PARCEL "Q",  
PLAT NO. 4 JONATHAN'S LANDING P.U.D. RECORDED IN  
P.B. 41, PGS. 183-185 LYING IN SEC. 7, TWP. 41 S., RGE. 43 E.,  
PALM BEACH COUNTY, FLORIDA

JANUARY 1988

SHEET 2 of 3



MATCH LINE  
SEE SHEET 3 of 3



IMPACT FEE  
PET 79-230  
483.48 D.U.  
COLLECT.  
PAM L.C.

WET MARINA  
JONATHAN'S LANDING  
PLAT NO. 4  
PLATBOOK 41, PAGES 183-185

BEARING BASE:  
THE WESTERLY RIGHT-OF-WAY LINE OF THE INTRACOASTAL WATERWAY IS TAKEN TO BEAR N 11° 51' 22" E AND ALL OTHER BEARINGS ARE RELATIVE THERETO.

- = FOUND IRON ROD & CAP # 2799
  - = PERMANENT REFERENCE MONUMENT (P.R.M.) FOUND. # 1652
  - = PERMANENT REFERENCE MONUMENT (P.R.M.) SET. # 1652
  - = PERMANENT CONTROL POINT (P.C.P.)
  - U.E. = UTILITY EASEMENT
  - D.E. = DRAINAGE EASEMENT
  - R.M.E. = RECIPROCAL MAINTENANCE EASEMENT
  - (R) = RADIAL LINES
- THERE SHALL BE NO BUILDINGS OR STRUCTURES PLACED ON UTILITY EASEMENTS.
- THERE SHALL BE NO BUILDINGS OR THE PLANTING OF TREES OR SHRUBS ON DRAINAGE OR UTILITY EASEMENTS FOR SEWER AND WATER.
- WHEN DRAINAGE AND UTILITY EASEMENTS CROSS, DRAINAGE EASEMENTS SHALL TAKE PRECEDENCE.
- BUILDING SETBACKS AND SEPARATION SHALL CONFORM TO APPLICABLE REQUIREMENTS OF THE PALM BEACH COUNTY ZONING CODE.
- LANDSCAPING ON UTILITY EASEMENTS OTHER THAN FOR SEWER AND WATER SHALL REQUIRE PRIOR APPROVAL OF ALL UTILITIES OCCUPYING SAME.

### NOTES:

1. THERE MAY BE ADDITIONAL RESTRICTIONS THAT ARE NOT RECORDED ON THIS PLAT THAT MAY BE FOUND IN THE PUBLIC RECORDS OF PALM BEACH COUNTY.
2. PALM BEACH COUNTY HAS THE RIGHT BUT NOT THE OBLIGATION TO MAINTAIN THAT PORTION OF THE DRAINAGE SYSTEM ASSOCIATED WITH COUNTY MAINTAINED ROADS WITHOUT RECOURSE TO P.B. COUNTY, FLORIDA.

ADD. BY [Signature]  
CHECKED BY [Signature]

THIS INSTRUMENT PREPARED BY:  
EUGENE J. PERRI IN THE OFFICE  
OF LINDA H. BROWNING, FERRARI  
& HELLSTROM, JUPITER, FL

# CASSEEKEY ISLAND 59/16

LINDA H. BROWNING, FERRARI & HELLSTROM  
16 CENTRAL PARKWAY  
SUITE 420  
JUPITER, FL 33468

23

1098  
RM  
33458  
AZ 45  
16730  
16731  
16732  
16733  
16734  
16735  
16736  
16737  
16738  
16739  
16740  
16741  
16742  
16743  
16744  
16745  
16746  
16747  
16748  
16749  
16750  
16751  
16752  
16753  
16754  
16755  
16756  
16757  
16758  
16759  
16760  
16761  
16762  
16763  
16764  
16765  
16766  
16767  
16768  
16769  
16770  
16771  
16772  
16773  
16774  
16775  
16776  
16777  
16778  
16779  
16780  
16781  
16782  
16783  
16784  
16785  
16786  
16787  
16788  
16789  
16790  
16791  
16792  
16793  
16794  
16795  
16796  
16797  
16798  
16799  
16800