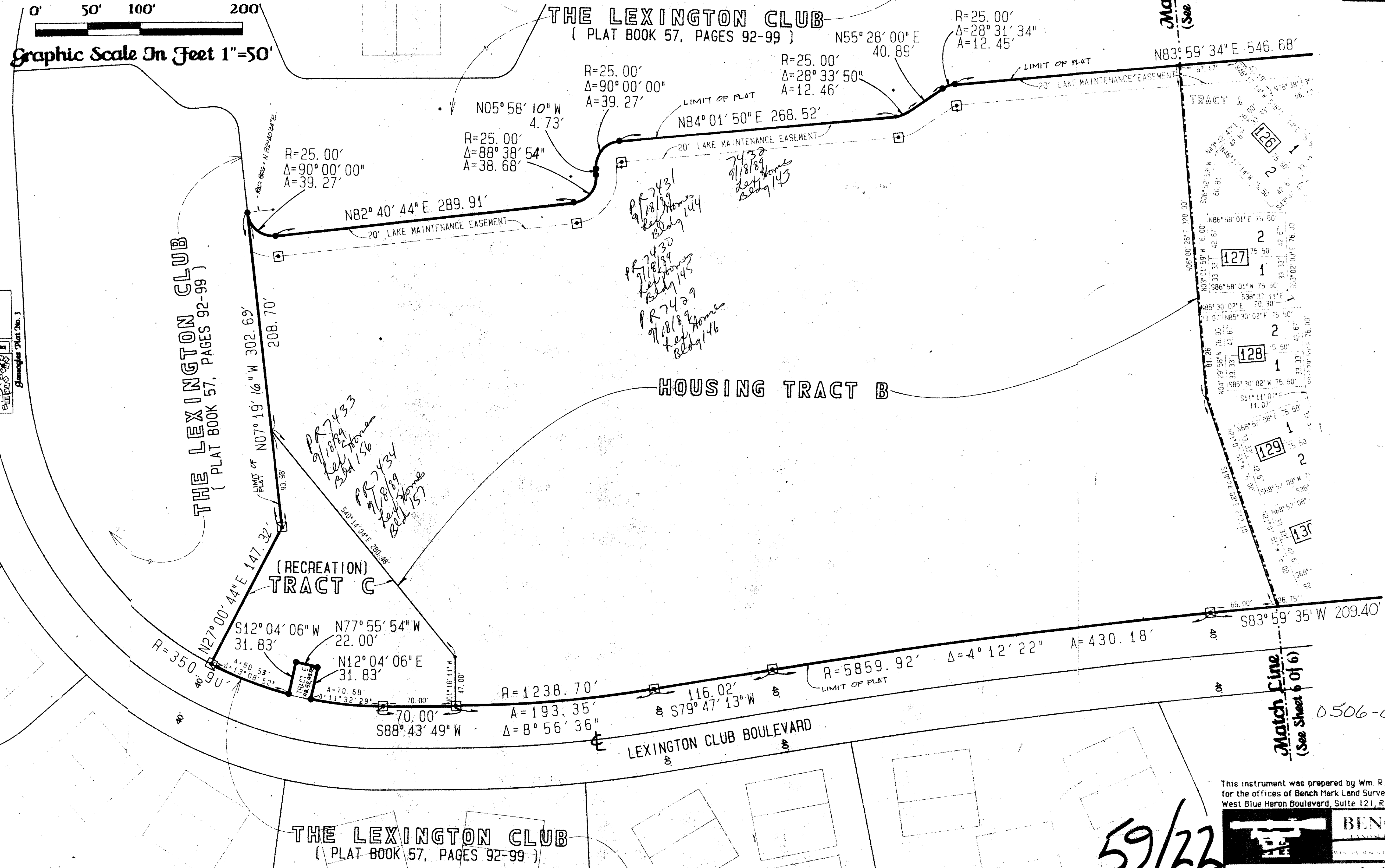
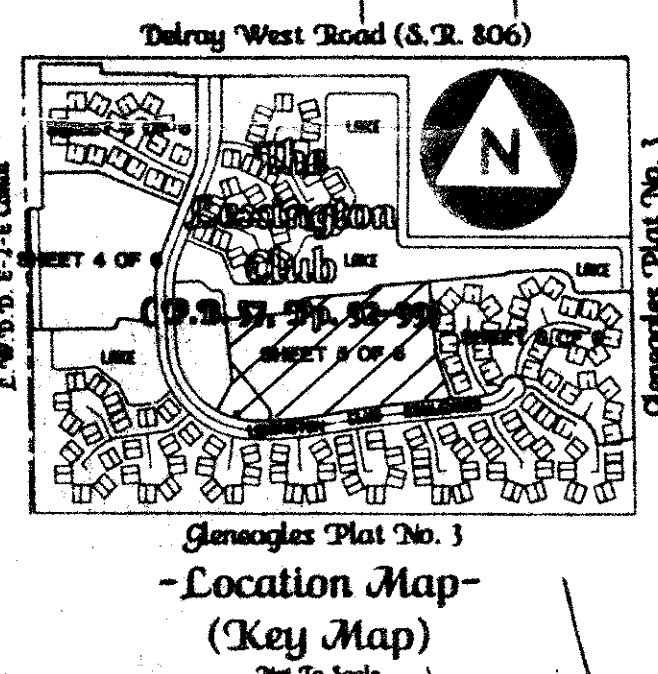
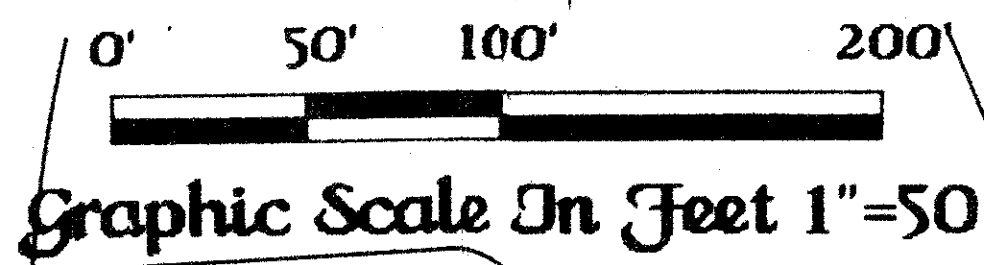
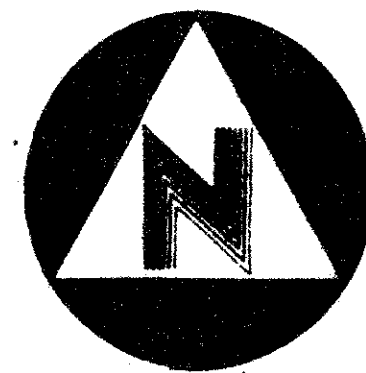


# -The Lexington Club Plat No. 2-

-A Part Of Hamilton Place, A Planned Unit Development, Lying In Section 21, Township 46 South, Range 42 East-  
 Being A Replat Of A Part Of "The Lexington Club", ( P. B. 57 Pp. 92-99) Public Records, Palm Beach County, Florida.  
 July, A. D., Nineteen Hundred Eighty Seven

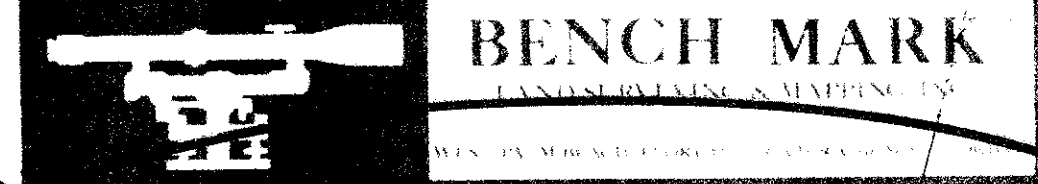
Sheet 5 Of 6

State of Florida )  
 County of Palm Beach )  
 This Plat was filed for record  
 at \_\_\_\_\_ this \_\_\_\_\_ day of  
 \_\_\_\_\_ A. D., 1987, and  
 duly recorded in "Plat Book  
 \_\_\_\_\_ on Pages \_\_\_\_\_ thru \_\_\_\_\_  
 John B. Dunkle,  
 Clerk of the Circuit Court.  
 By: \_\_\_\_\_  
 Deputy Clerk



SUBDIVISION # 20 Lexington Club  
 BOOK 59 PAGE 52  
 FLOOD ZONE B  
 QUAD # 52  
 SE PUD 8676  
 PUD NAME 74Z 468

This instrument was prepared by Wm. R. Van Campen, R.L.S., in and for the offices of Bench Mark Land Surveying & Mapping, Inc., 4152 West Blue Heron Boulevard, Suite 121, Riviera Beach, FL, 33404.



-Record Plat-  
 The Lexington Club Plat No. 2

59/22

0506-001