

-The Lexington Club Plat No. 2-

-A Part Of Hamilton Place, A Planned Unit Development, Lying In Section 21, Township 46 South, Range 42 East-
 Being A Replat Of A Part Of "The Lexington Club", (P. B. 57 Pp. 92-99) Public Records, Palm Beach County, Florida.
 July, A. D., Nineteen Hundred Eighty Seven

Sheet 6 Of 6

23

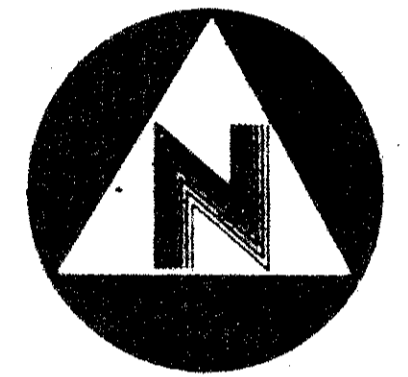
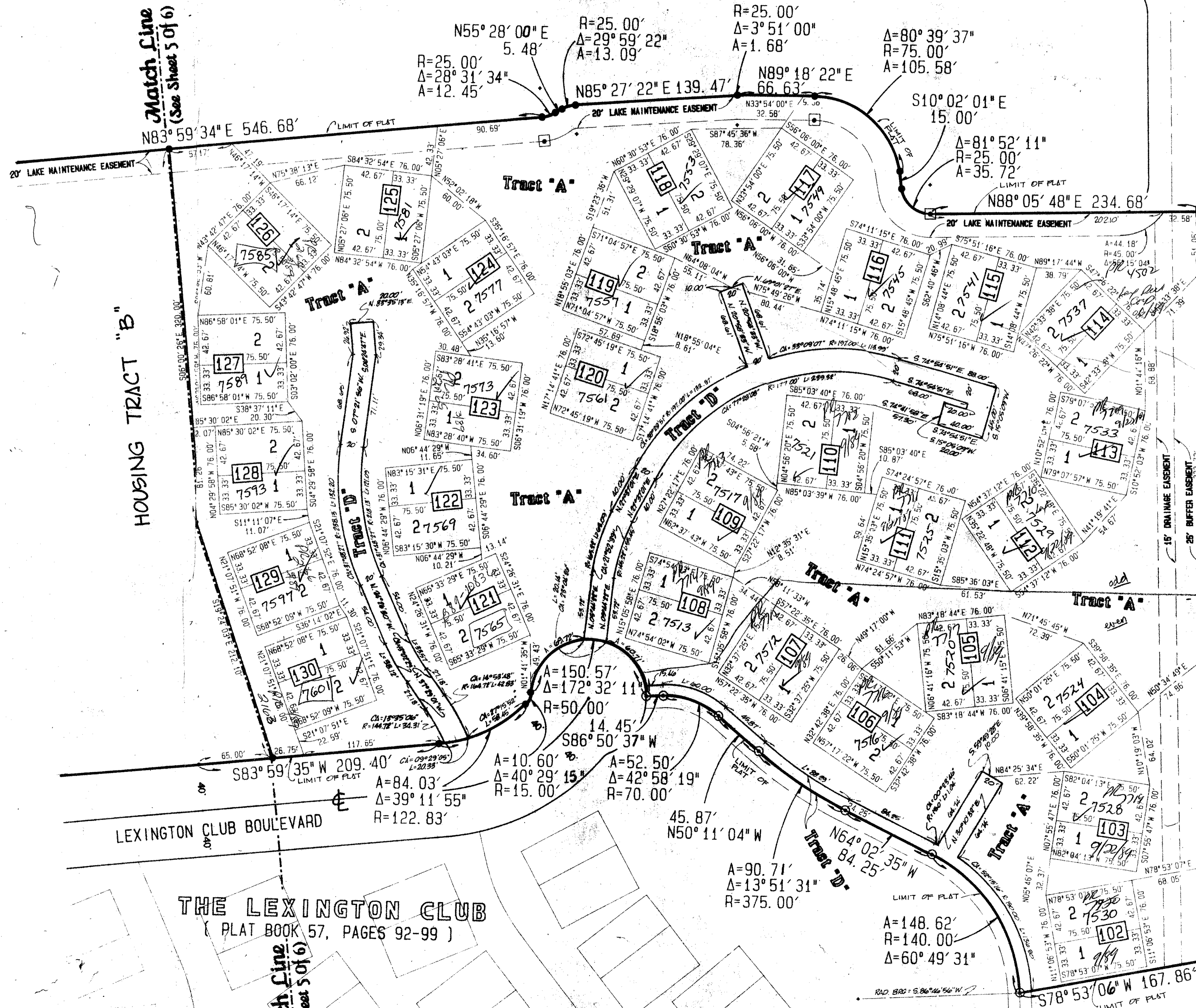
State of Florida
 County of Palm Beach

This Plat was filed for record
 at _____ this _____ day of
 _____ A.D., 1987, and
 duly recorded in Plat Book
 _____ on Pages _____ thru _____

John B. Dunkle,
 Clerk of the Circuit Court.

By: _____
 Deputy Clerk

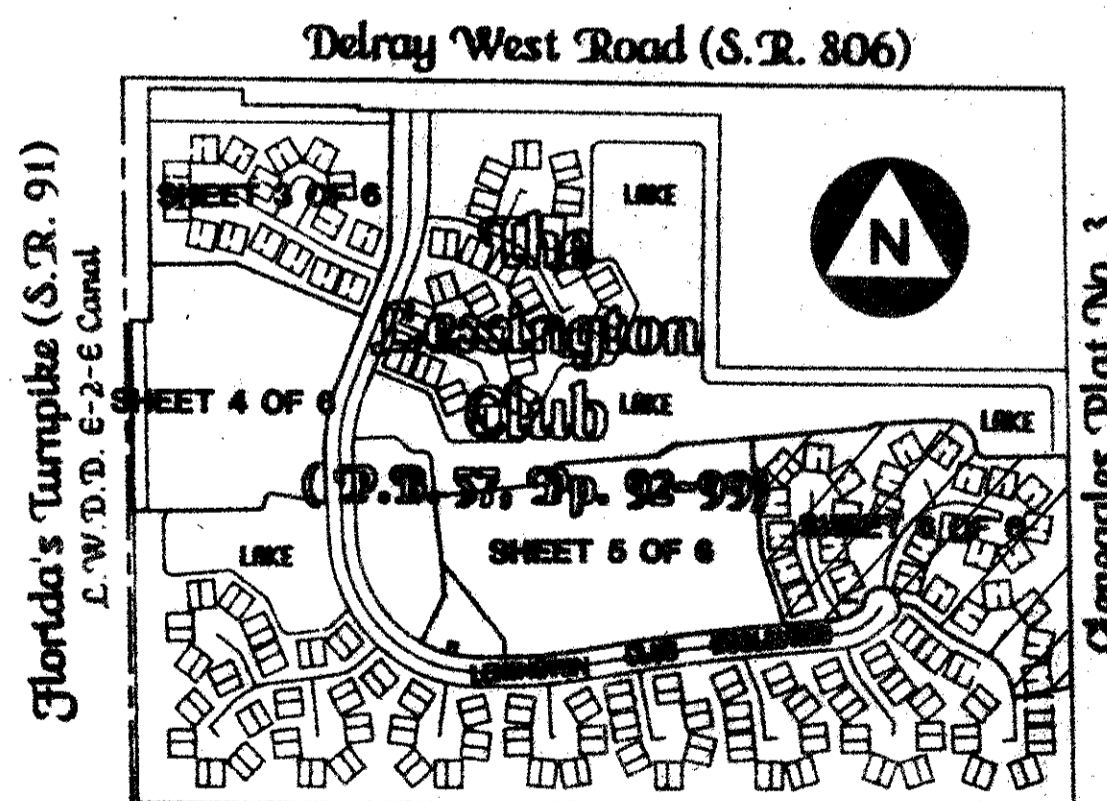
THE LEXINGTON CLUB
 (PLAT BOOK 57, PAGES 92-99)



0' 50' 100' 200'

Graphic Scale In Feet 1"=50'

GLENEAGLES PLAT NO. 3
 (PLAT BOOK 51, PAGES 145-148)



Gleneagles Plat No. 3
 -Location Map-
 (Key Map)
 Not To Scale

SUBDIVISION # _____
 BOOK _____
 RECORD # _____
 QUAD # 52
 SE PUD Bc-6
 PUD NAME _____
 5/20/88
 TAZ 468

THE LEXINGTON CLUB
 (PLAT BOOK 57, PAGES 92-99)

THE LEXINGTON CLUB
 (PLAT BOOK 57, PAGES 92-99)

P O B
 (PARCEL TWO)

P.O.C.
 (SOUTHEAST CORNER,
 THE LEXINGTON CLUB
 P.B. 57, Pp. 92-99)

This instrument was prepared by Wm. R. Van Campen, R.L.S., in and to the offices of Bench Mark Land Surveying & Mapping, Inc., 4-52 West Blue Heron Boulevard, Suite 121, Riviera Beach, FL, 33404.

BENCH MARK
 LAND SURVEYING & MAPPING, INC.
 4-52 WEST BLUE HERON BOULEVARD, SUITE 121, RIVIERA BEACH, FLORIDA 33404

-Record Plat-
The Lexington Club Plat No. 2

SCALE	DATE	WO. NO.
6"=1"	5/20/88	6 OF 6