

COPPER LAKE

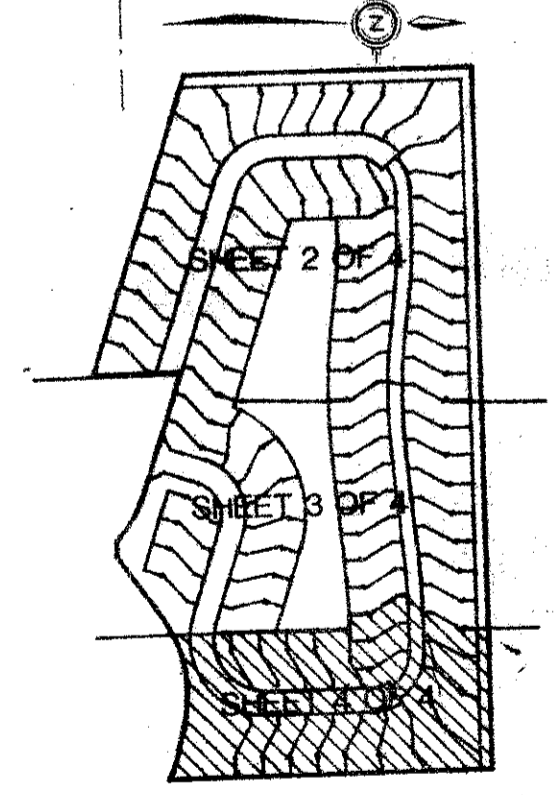
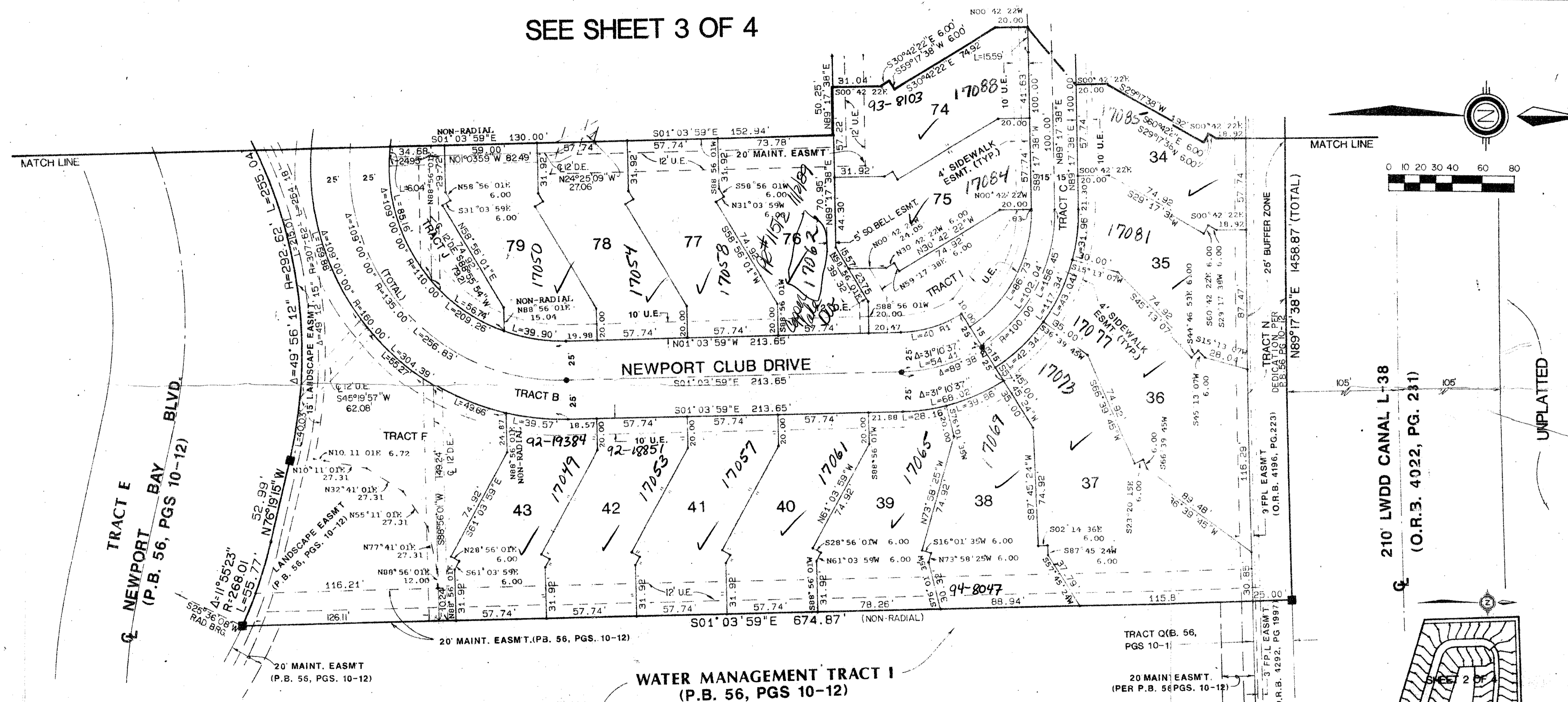
A REPLAT OF TRACTS B & P OF "THE NEWPORT BAY CLUB, A P.U.D.", (P.B.56, PG.10-12)
SITUATE IN SECTION 34, TOWNSHIP 46 SOUTH, RANGE 42 EAST
PALM BEACH COUNTY, FLORIDA

JULY, 1987

SHEET 4 OF 4

STATE OF FLORIDA
COUNTY OF PALM BEACH
THIS PLAT WAS FILED FOR
RECORD _____ DAY OF _____
AD. 1988 AND DULY RECORDED
IN PLAT BOOK _____ ON PAGES
_____ AND _____
JOHN B. DUNKLE, CLERK
BY: _____, D.C.

SEE SHEET 3 OF 4



SHEET LOCATION MAP
(N.T.S.)

UNPLATTED

ADD. BY *[Signature]*
CHECKED BY *[Signature]*

24/7/87
SUBDIVISION - Copper Lake
BOOK 30
PAGE 25A
RTS 33434
PUB. PUD 85-167

TAZ 603

Meridian Surveying and Mapping, Inc.
2000 LOMBARD STREET
WEST PALM BEACH, FL.
DRAWN D.M.W. DATE AUG. 1987
CHECKED W.B.H. SCALE 1"=40'
DRAWING NO. 09220PL
COPPER LAKE (PARCEL B)
THE NEWPORT BAY CLUB, A P.U.D.

59/30
0505-001