

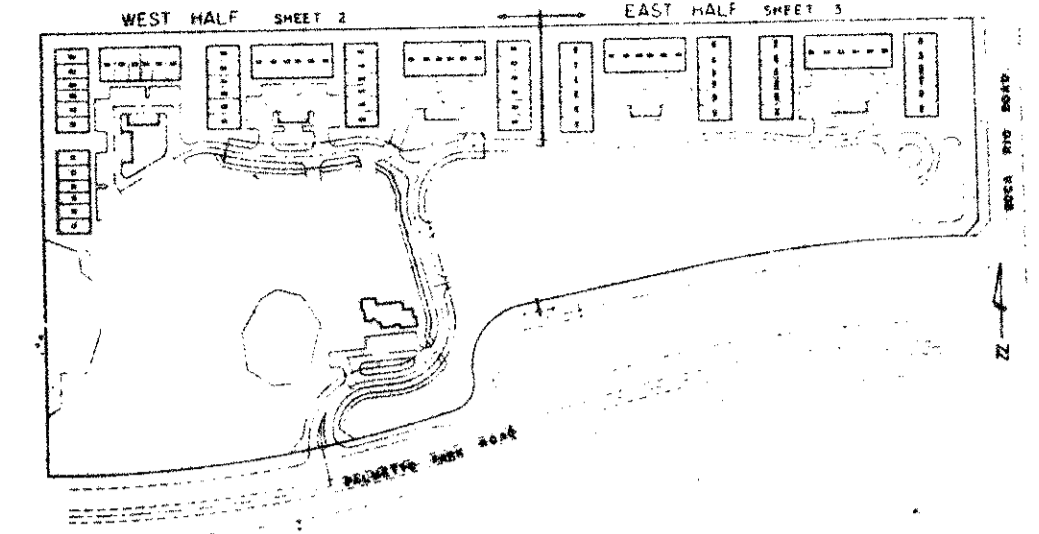
# ADDISON PLACE

## A PLANNED UNIT DEVELOPMENT - P.U.D.

BEING A REPLAT OF PORTIONS OF TRACTS 88, 89, 90, 91, 110, 111, 112 AND 113, BLOCK 79, PALM BEACH FARMS COMPANY'S PLAT NO. 3, AS RECORDED IN PLAT BOOK 2, PGS. 45 - 54, SITUATE IN SECTION 20, TOWNSHIP 47 SOUTH, RANGE 42 EAST, PALM BEACH COUNTY, FLORIDA.

SHEET 2 OF 3

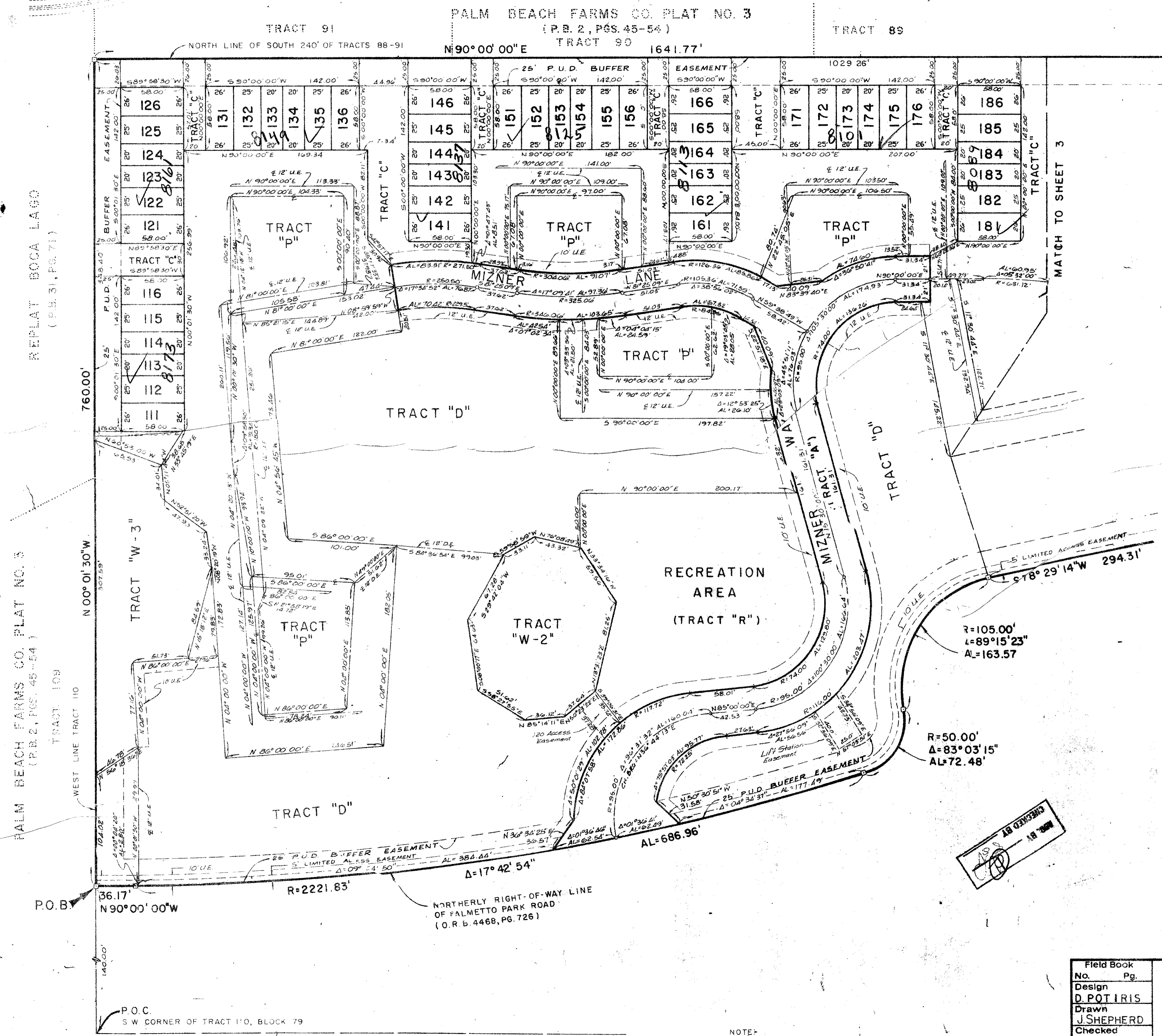
JULY, 1987



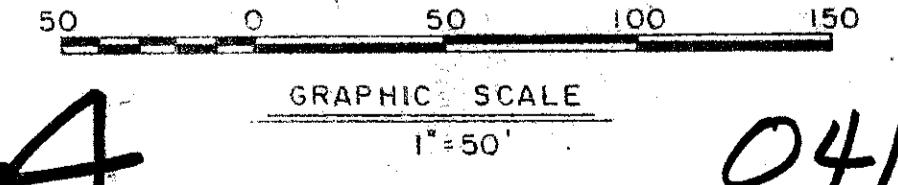
COUNTY OF PALM BEACH  
STATE OF FLORIDA

This Plat was filed for record at \_\_\_\_\_ M.  
this \_\_\_\_\_ day of \_\_\_\_\_  
19 \_\_\_\_\_ and duly recorded in Plat Book No. \_\_\_\_\_  
on page \_\_\_\_\_  
JOHN B. DUNKLE, Clerk, Circuit Court  
By \_\_\_\_\_ D.C.

SUBDIVISION: Addison Place  
BOOK: 2306  
PAGE: 51  
PUD NO: 88-74  
PUD NAME: 108  
DATE: 5/23/88  
TAZ: 786



59/44



### ADDISON PLACE

Field Book No. Pg.  
Design D. POTIRIS  
Drawn J. SHEPHERD  
Checked

ROBERT E. OWEN & ASSOCIATES, INC.  
ENGINEERS - PLANNERS - SURVEYORS  
WEST PALM BEACH  
FLORIDA

Job No. 87-1040  
Scale: 1" = 50'  
Date: JULY 1987  
Sheet: 2  
of 3  
File No. BF-2417

NOTE: ALL TIES FROM THE BOUNDARY LINES TO LOT CORNERS AS SHOWN HEREON ARE RADIAL OR AT RIGHT ANGLES TO SAID BOUNDARY