

TRACT 43 OF WELLINGTON P.U.D.

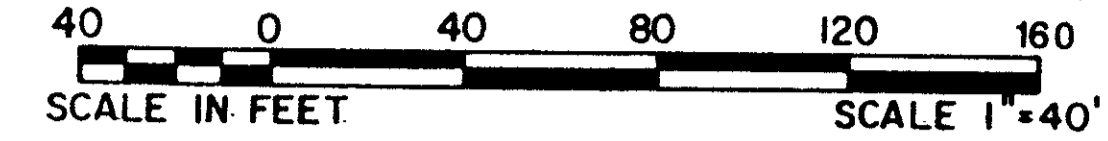
BEING A REPLAT OF A PART OF TRACT 43 OF WELLINGTON P.U.D. AS RECORDED IN PLAT BOOK 44, PAGE 61, INCLUSIVE, OF THE PUBLIC RECORDS OF PALM BEACH COUNTY, FLORIDA AND OTHER LANDS.

IN PART OF SECTIONS 10 AND 15, TOWNSHIP 44 SOUTH, RANGE 41 EAST

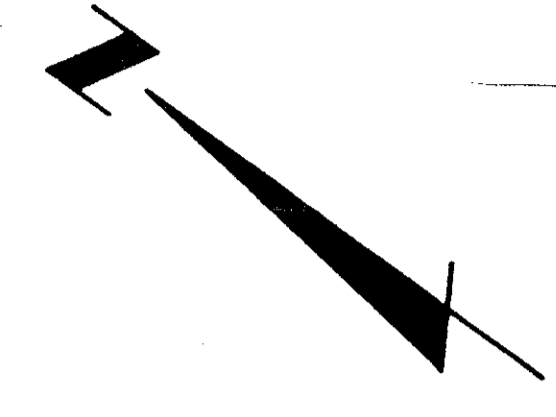
PALM BEACH COUNTY, FLORIDA

IN FOUR SHEETS SHEET NO. 3

GEE & JENSON
ENGINEERS - ARCHITECTS - PLANNERS, INC.
WEST PALM BEACH, FLORIDA
JULY 1987



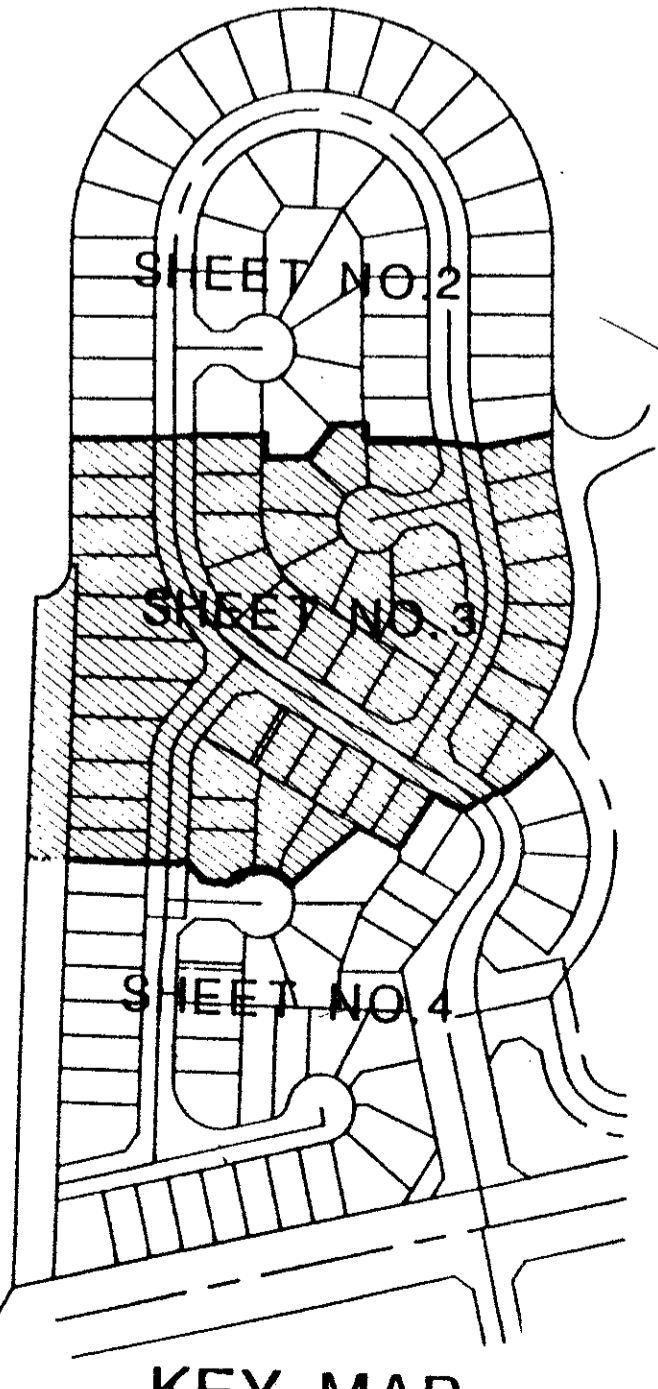
STATE OF FLORIDA
COUNTY OF PALM BEACH
This plat was filed for
record at _____ M. this day
of _____ 1988, and duly
recorded in Plat Book No. _____
on Pages _____ thru _____
JOHN B. DUNKLE
Clerk Circuit Court
By: _____ D.C.



AR
TAZ 708
PUD 86-32

COMPUTED	_____
DRAWN	_____
CHECKED	_____
COMMENTS	_____
APPROVED	_____
REVISION	_____

JOB NO. 87-337



0332-046
TRACT 43 OF WELLINGTON P.U.D. 59/70