

September A.D.,
Nineteen Hundred Eighty Seven

Sheet Two Of Two

-Hampton Club-

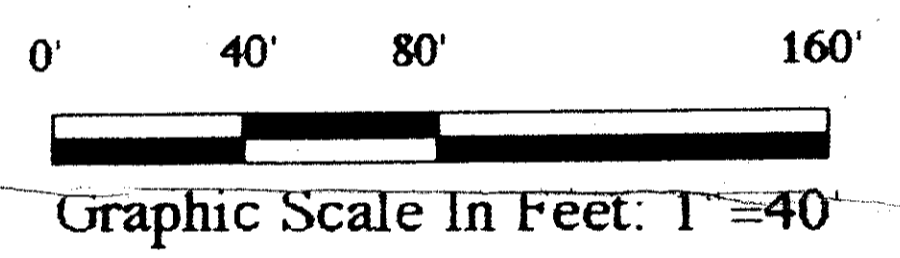
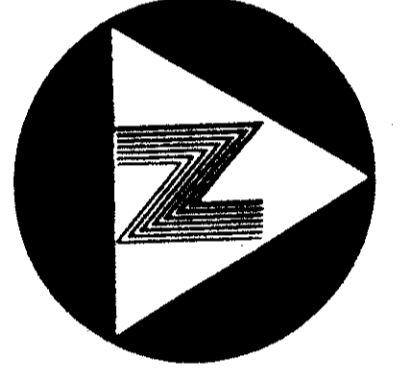
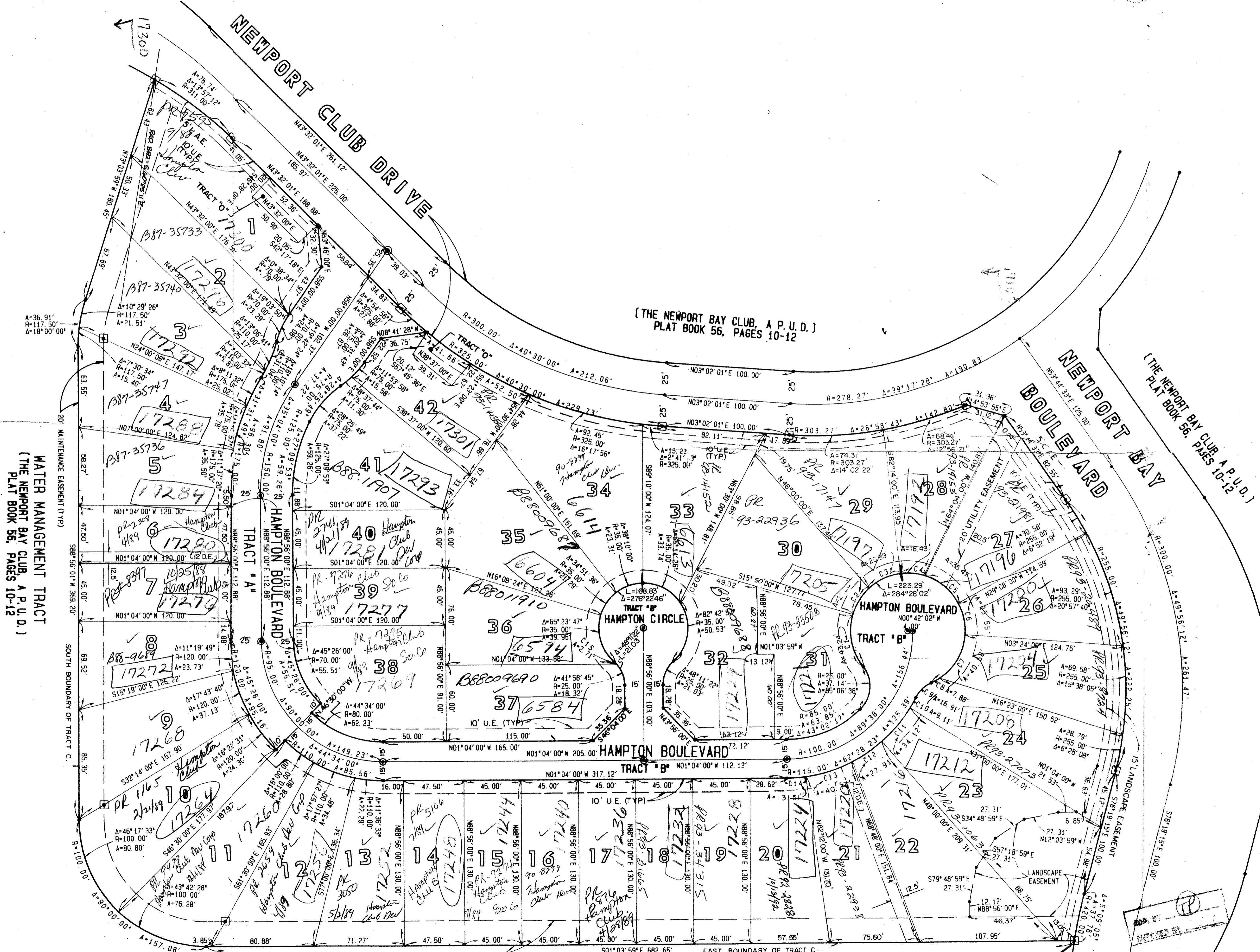
A Part Of The Newport Bay Club, A Planned Unit Development, Lying In Section 34 Township 46 South, Range 42 East
Being A Replat Of All Of Tract "C", "The Newport Bay Club, A P.U.D.", (P.B. 56, Pp. 10 - 12) Public Records, Palm Beach County, Florida

State of Florida)
County of Palm Beach)

This Plat was filed for record
at _____ this _____ day
of _____ A.D., 1987, and
duly recorded in Plat Book
_____ on Pages _____ and _____

John B. Dunkle,
Clerk of the Circuit Court.

By: _____
D.C.



CURVE DATA

Curve ID	Radius	Delta	Length	Tangent	Chord
C1	45.00'	55°02'55"	43.24'	23.45'	41.59'
C2	45.00'	32°10'00"	25.26'	13.86'	26.49'
C3	45.00'	34°14'00"	26.89'	13.86'	26.49'
C4	45.00'	23°28'03"	18.43'	9.35'	18.30'
C5	45.00'	45°09'57"	35.47'	18.72'	34.56'
C6	45.00'	32°32'00"	25.55'	13.13'	25.21'
C7	45.00'	51°47'22"	40.68'	21.85'	39.30'
C8	45.00'	10°01'44"	7.88'	3.95'	7.87'
C9	25.00'	38°45'28"	16.91'	8.79'	16.29'
C10	115.00'	4°32'22"	9.11'	4.56'	9.11'
C11	115.00'	17°00'00"	34.12'	17.19'	34.00'
C12	115.00'	19°54'14"	27.91'	14.02'	27.84'
C13	115.00'	20°17'45"	40.74'	20.59'	40.52'
C14	115.00'	6°44'08"	13.51'	6.77'	13.51'
C15	25.00'	6°12'38"	2.71'	1.36'	2.71'

0505. [redacted]
002
59/73

This instrument was prepared by Wm. R. Van Campen, R.L.S., in
and for the offices of Bench Mark Land Surveying & Mapping,
Inc., 4152 W. Blue Heron Boulevard, Suite 121, Riviera Beach, FL.



Record Plat
Hampton Club

OWN	CKD	DATE	NO.
SCALE	SIZE	FB	SH-RT
			OF

- Legend:**
- INDICATES PERMANENT REFERENCE MONUMENT (P.R.M.)
 - INDICATES PERMANENT CONTROL POINT (P.C.P.)
 - DE INDICATES DRAINAGE EASEMENT
 - UE INDICATES UTILITY EASEMENT
 - LA INDICATES LANDSCAPE EASEMENT
 - LAE INDICATES A LIMITED ACCESS EASEMENT

WATER MANAGEMENT TRACT
(THE NEWPORT BAY CLUB, A P.U.D.)
PLAT BOOK 56, PAGES 10-12

P.O.B.
Northeast Corner, Tract "C"

SUBMITTER'S & SURVEYOR'S CHECK
BOOK 59 P. 10-12
DATE 9/1/87
BY [redacted]
PUD 85/167
RTS

TAZ 603