

THE POLO CLUB PLAT III

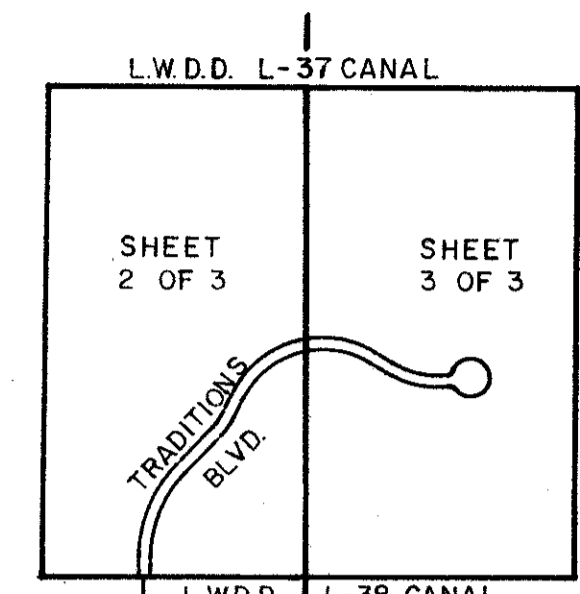
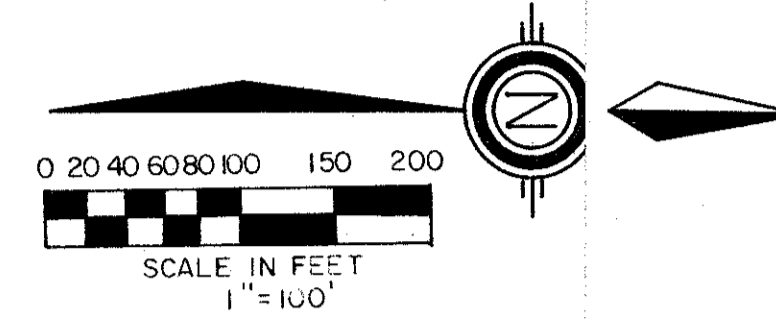
PART OF THE POLO CLUB P.U.D.

BEING A REPLAT OF TRACT IV OF "THE POLO CLUB PLAT II" (P.B. 57 PGS. 46-49)
SITUATE IN SECTIONS 26, AND 27, TOWNSHIP 46 SOUTH, RANGE 42 EAST
PALM BEACH COUNTY, FLORIDA

1988

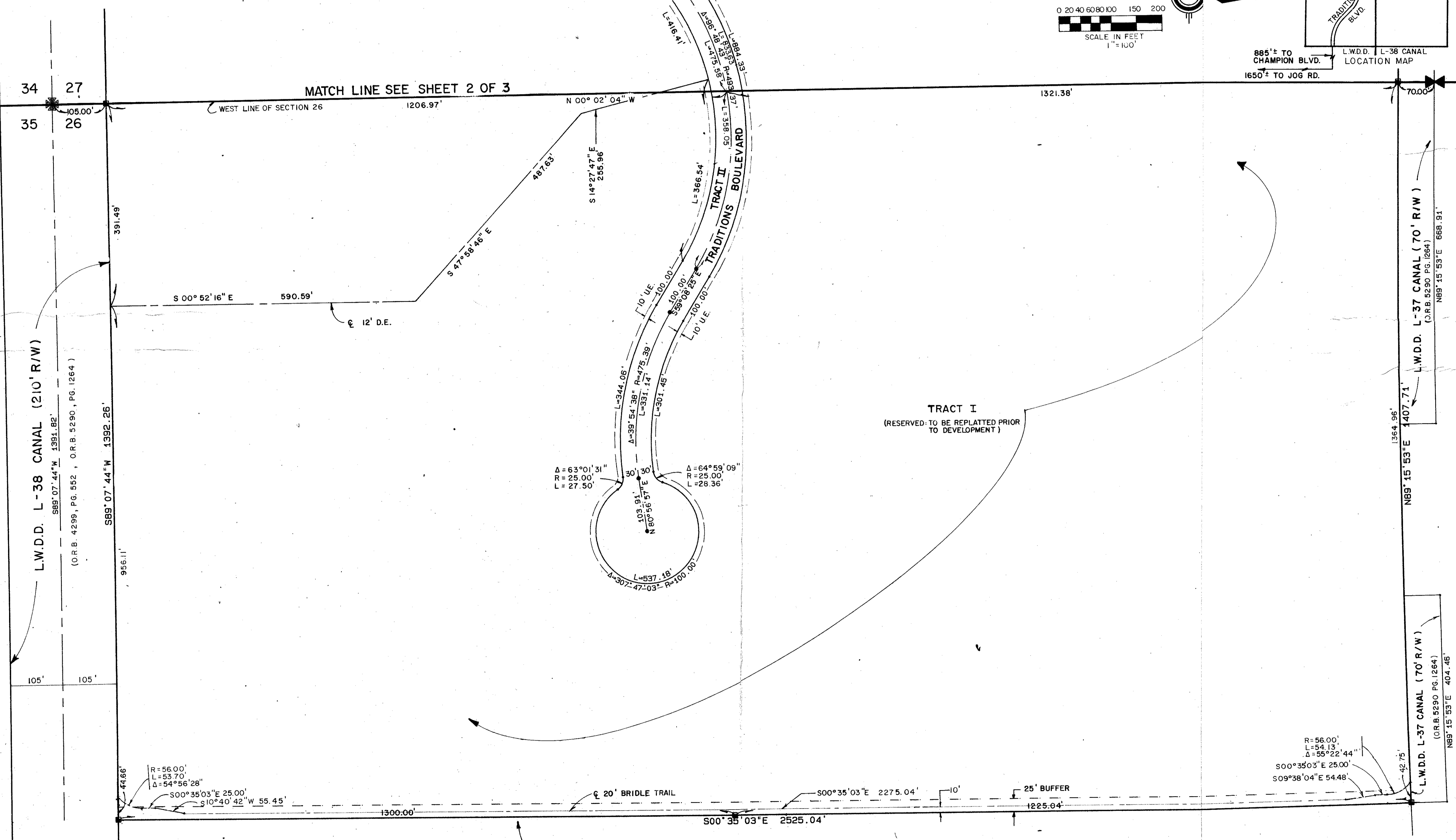
SHEET 3 OF 3

STATE OF FLORIDA
COUNTY OF PALM BEACH
THIS PLAT WAS FILED FOR
RECORD _____ DAY OF _____
AD, 1988 AND DULY RECORDED
IN PLAT BOOK _____ ON PAGES
_____ AND _____
JOHN B. DUNKLE, CLERK
BY: _____, D.C.



885'± TO CHAMPION BLVD.
1650'± TO JOG RD.
L.W.D.D. L-38 CANAL
LOCATION MAP

MATCH LINE SEE SHEET 2 OF 3



SUBDIVISION # THE POLO CLUB #3
BOOK 54 PAGE 112
FLOOD ZONE B
QUAD # 37
SE PID # 471
PUD NAME POLO CLUB PUD
TAZ 477

UNPLATTED

0436-006
59/112

BOCA DELRAY PARCEL "S"
(P.B. 51, PGS. 138-139)

Meridian Surveying and mapping inc.
2000 LOMBARD STREET WEST PALM BEACH, FL.

DRAWN	M.H.C.	DATE	SEPT. 1987
CHECKED	W.B.H.	SCALE	1"=100'
DRAWING NO.	86-P3-074		

THE POLO CLUB PLAT III
PART OF
THE POLO CLUB P.U.D.