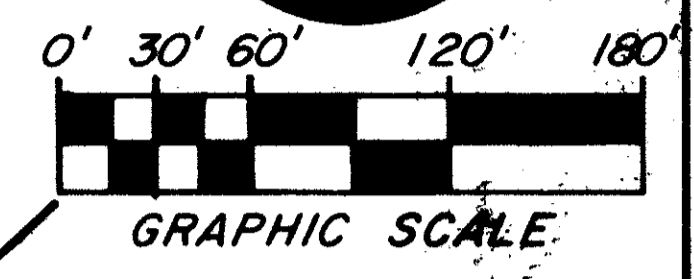
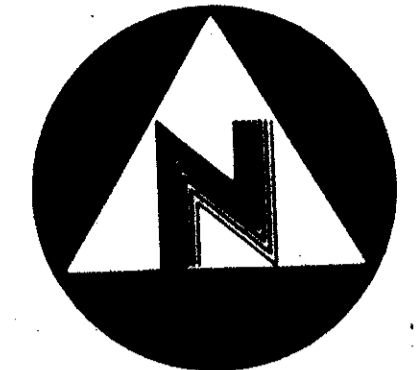
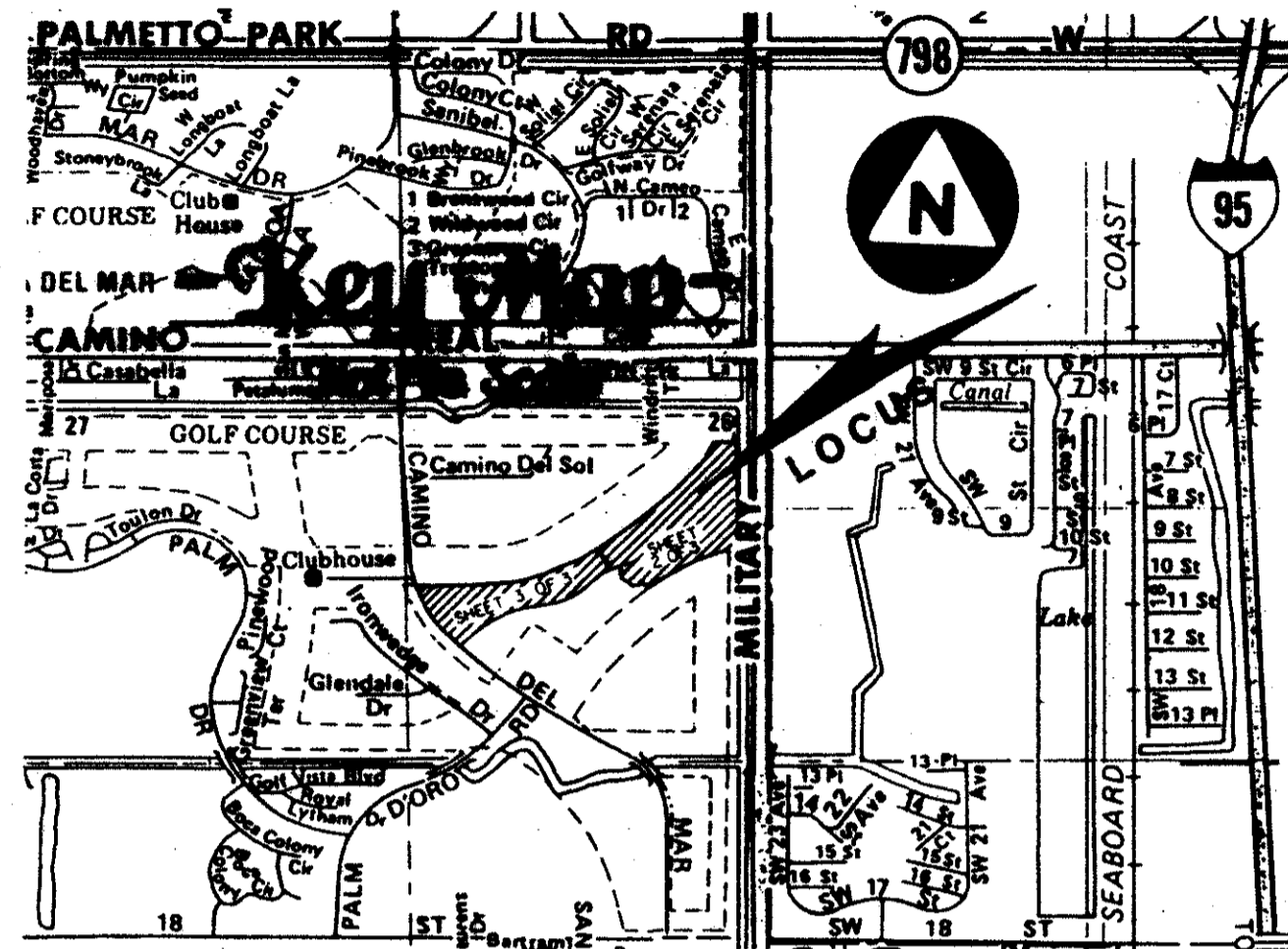


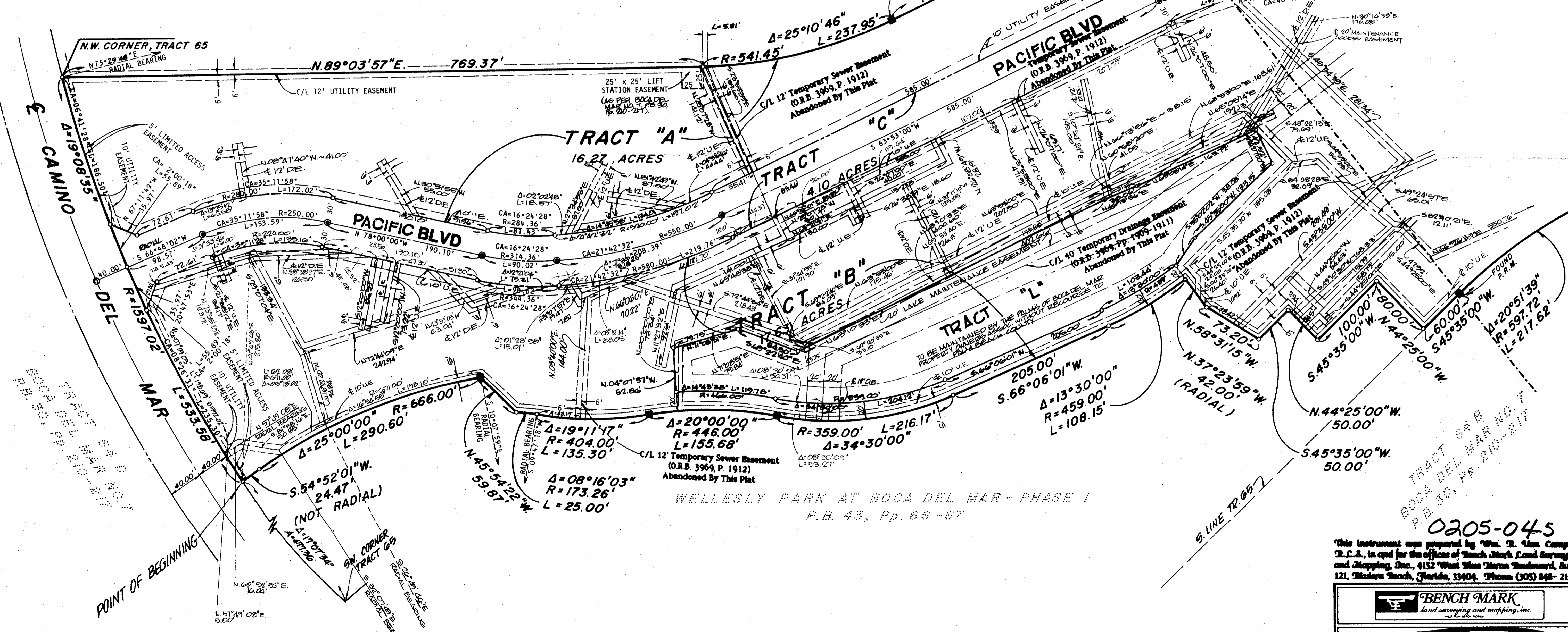
-Palms Of Boca Del Mar-

A Part Of Boca Del Mar, A Planned Unit Development, Lying In Section 26, Township 47 South, Range 42 East
Being A Replat Of A Portion Of Tract 65, Boca Del Mar No. 7 (P.B. 30, Pp. 210-217) Public Records, Palm Beach County, Florida



STATE OF FLORIDA 1 S.S.
COUNTY OF PALM BEACH
THIS PLAT WAS FILED FOR RECORD
AT THIS DAY
OF A.D. AND
DULY RECORDED IN PLAT BOOK
ON PAGES AND
JOHN B. DUNKLE
CLERK, CIRCUIT COURT
BY _____ D.C.

TRACT 64 A
BOCA DEL MAR NO. 7
P.B. 30, Pp. 210-217



SUBDIVISION & Plans of Boca Del Mar
BOOK 357 PAGE 131
FLOOD ZONE NO. 1
QUAD # 3 C
SS PUO 84-152
P.B. 30, Pp. 210-217

TAL 685

- Legend:**
- INDICATES PERMANENT REFERENCE MONUMENT (P.R.M.)
 - INDICATES PERMANENT CONTROL POINT (P.C.P.)
 - DE INDICATES DRAINAGE EASEMENT.
 - UE INDICATES UTILITY EASEMENT.

0205-045
This instrument was prepared by Wm. H. Van Campen, S.L.S., in and for the office of Bench Mark Land Surveying and Mapping, Inc., 4152 West Man Maron Boulevard, Suite 121, Riviera Beach, Florida, 33404. Phone (305) 848-2102

BENCH MARK
land surveying and mapping, inc.

-Record Plat-
Palms Of Boca Del Mar

DESIGNED TAL	CHECKED WVC	JOB NO. P8405	DRAWING NO.
DATE 12/1987	SCALE 1" = 60'	APPROVED	SHEET OF 3 3

59/131