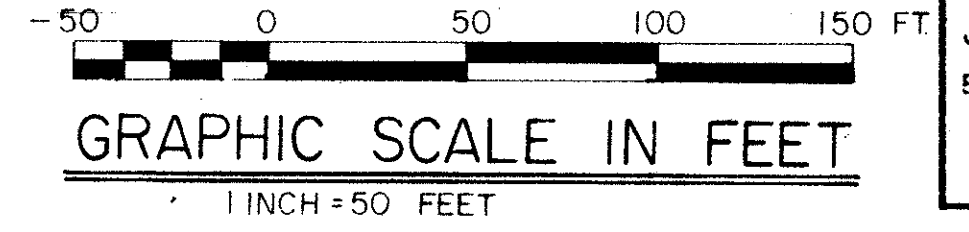
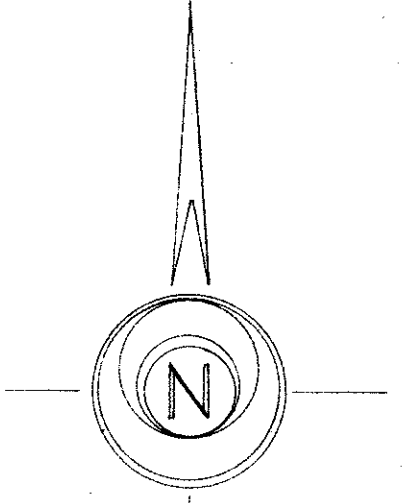
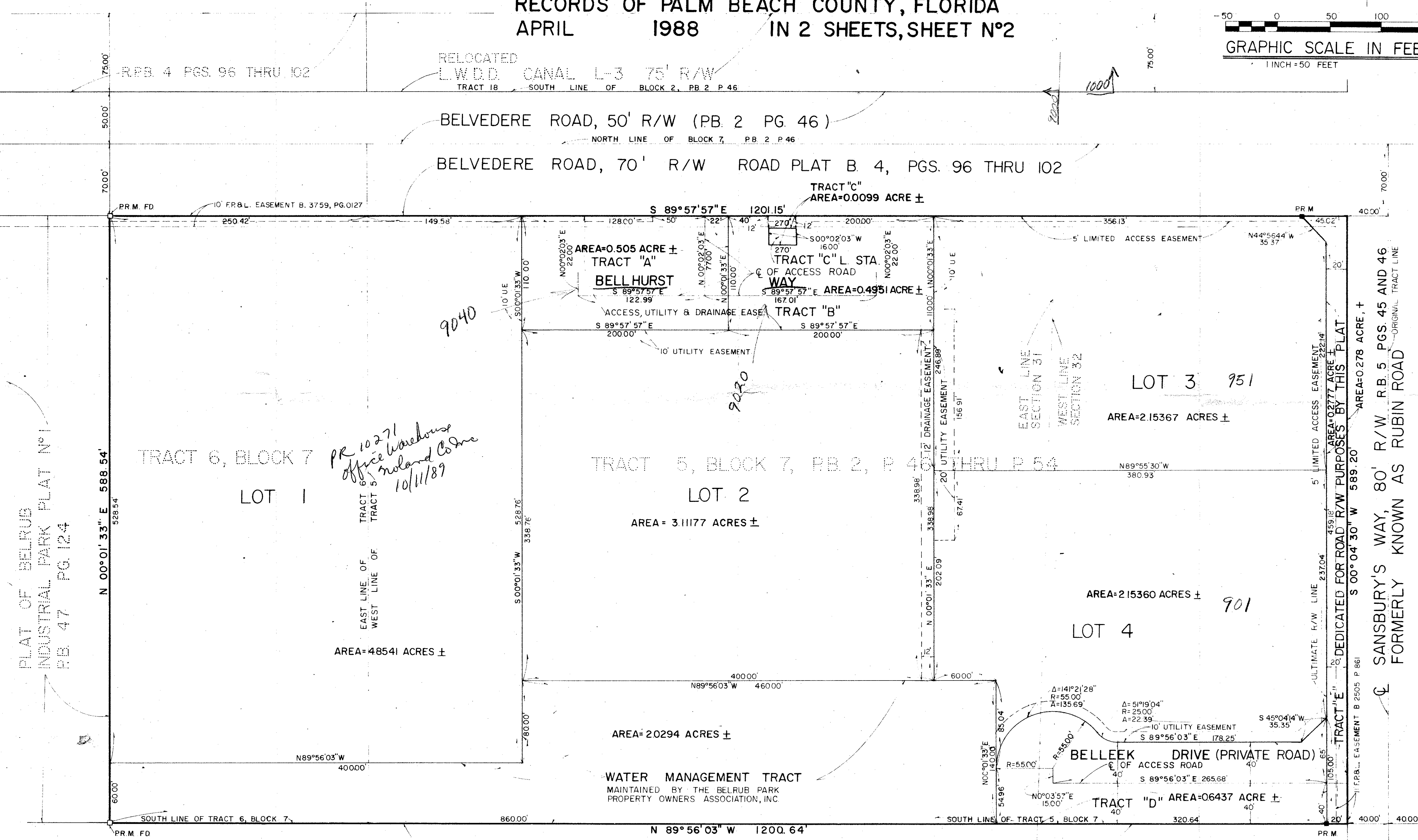


BELRUB INDUSTRIAL PARK PLAT N° 2

IN SECTIONS 31 AND 32, TOWNSHIP 43 SOUTH, RANGE 42 EAST
PALM BEACH COUNTY, FLORIDA
BEING A REPLAT OF A PORTION OF TRACTS 5 AND 6, BLOCK 7, PALM BEACH
FARMS CO. PLAT N° 3, RECORDED IN PLAT BOOK 2, PAGES 45 THRU. 54, PUBLIC
RECORDS OF PALM BEACH COUNTY, FLORIDA
APRIL 1988 IN 2 SHEETS, SHEET N°2



STATE OF FLORIDA
COUNTY OF PALM BEACH
This Plat was filed for record at _____ M.
this _____ day of _____
19 _____, and duly recorded in Plat Book N°.
_____ on page _____
JOHN B. DUNKLE, Clerk Circuit Court
By _____, D.C.



SUBDIVISION: Belrub Industrial Park
BOOK: 29 PAGE: 147
PLAT: 1988
CADD: 46
SHEET: 2 OF 2
JOB NO: 59411
JOB NAME: BELRUB INDUSTRIAL PARK

TAZ 82-1

*PR 10271
Office Warehouse
Roland Co Inc
10/11/89*

LEGEND
■ P.R.M. INDICATES PERMANENT REFERENCE MONUMENT SET
□ P.R.M. FOUND
"ACRES ±" INDICATES MORE OR LESS AREA IN ACRES

0390-001

59/147

F.R.S. & ASSOCIATES ENGINEERS, LAND SURVEYORS, LAND PLANNERS WEST PALM BEACH, FLORIDA	
SCALE: 1" = 50'	APPROVED BY
DATE: DECEMBER 1987	DRAWN BY: PB MORALES
BELRUB INDUSTRIAL PARK PLAT N° 2 Sheet 2 of 2 Sheets	
JOB NO. 87-S-13 DRAWING NUMBER D-112-87-S	