

MANCHESTER

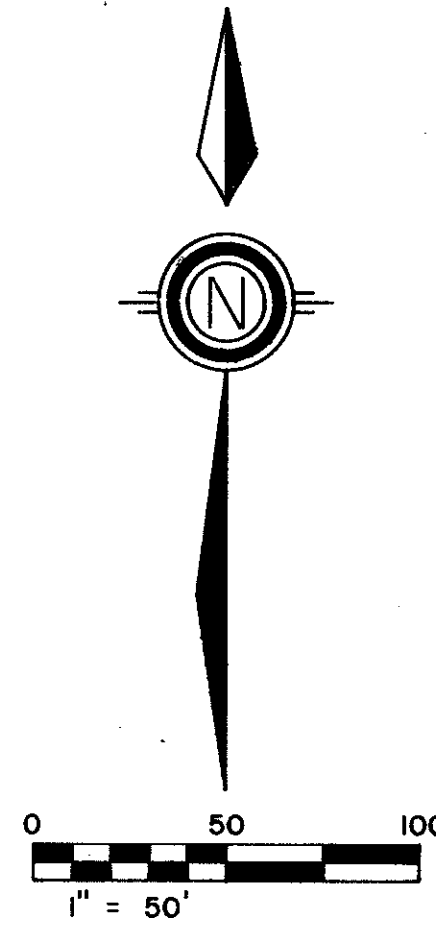
A PART OF THE POLO CLUB P.U.D.
BEING A REPLAT OF A PORTION OF TRACT II, "THE POLO CLUB PLAT I" (P.B. 52 PGS. 35-36)
SITUATE IN SECTION 35, TOWNSHIP 46 SOUTH, RANGE 42 EAST
PALM BEACH COUNTY, FLORIDA

1988

SHEET 2 OF 2

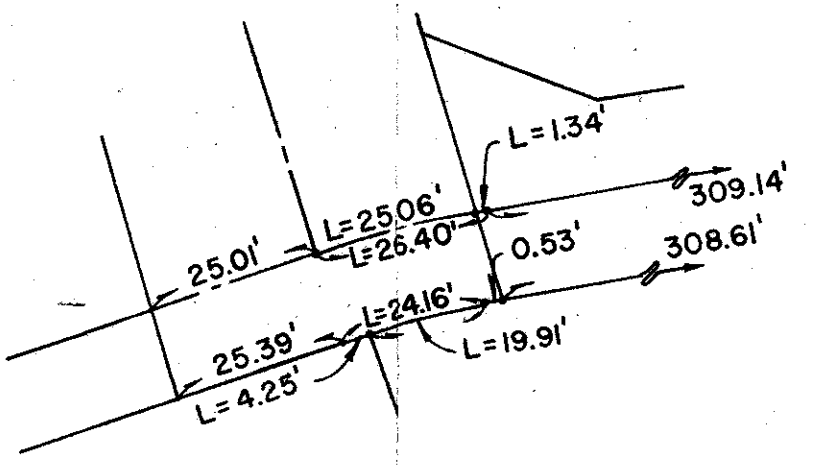
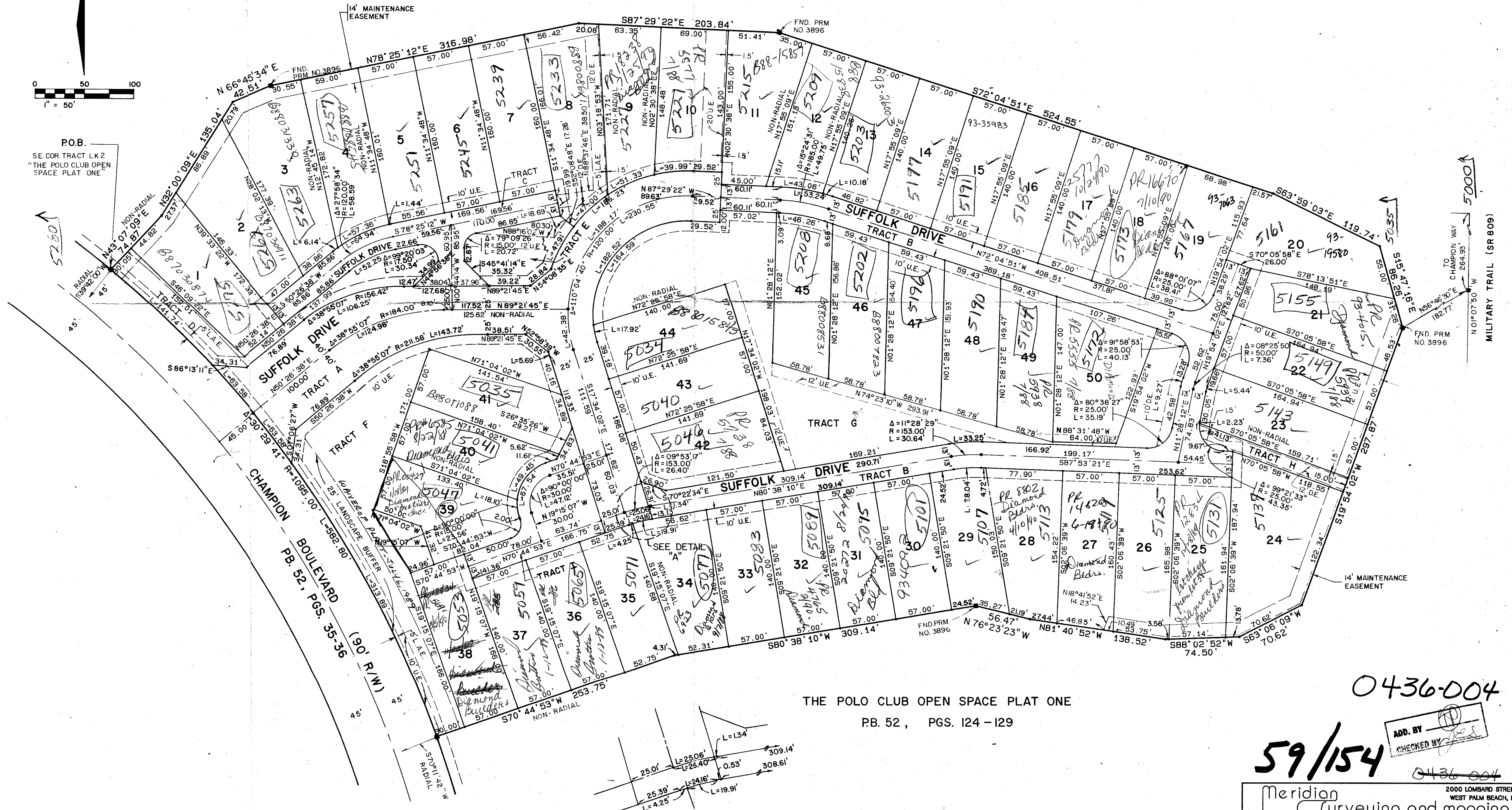
STATE OF FLORIDA
COUNTY OF PALM BEACH
THIS PLAT WAS FILED FOR
RECORD _____ DAY OF _____
AD. 1988 AND IT IS RECORDED
IN PLAT BOOK _____ ON PAGES
_____ AND _____
JOHN B. DUNKLE, CLERK
BY: _____, D.C.

THE POLO CLUB OPEN SPACE PLAT ONE
PB. 52, PGS. 124-129



P.O.B.
SE COR TRACT LK 2
"THE POLO CLUB OPEN
SPACE PLAT ONE"

35/146/142
Manchester
59 B
37
PJP 84-71
REV. CADD BEHIND OF LOTS 951, 70, ADDED 12 V.E.P.S. TO BEHIND - M.P.L.C.



THE POLO CLUB OPEN SPACE PLAT ONE
PB. 52, PGS. 124-129

0436-004

59/154

ADD. BY [Signature]
CHECKED BY [Signature]

Meridian Surveying and mapping inc. 2000 LOMBARD STREET WEST PALM BEACH, FL.

DRAWN M.H.C.	DATE OCT. 1987
CHECKED W.B.H.	SCALE 1" = 50'
DRAWING NO. 09489PL	MANCHESTER PART OF THE POLO CLUB P.U.D.