

# ABERDEEN - PLAT NO. 8

A PORTION OF A (P.U.D.)

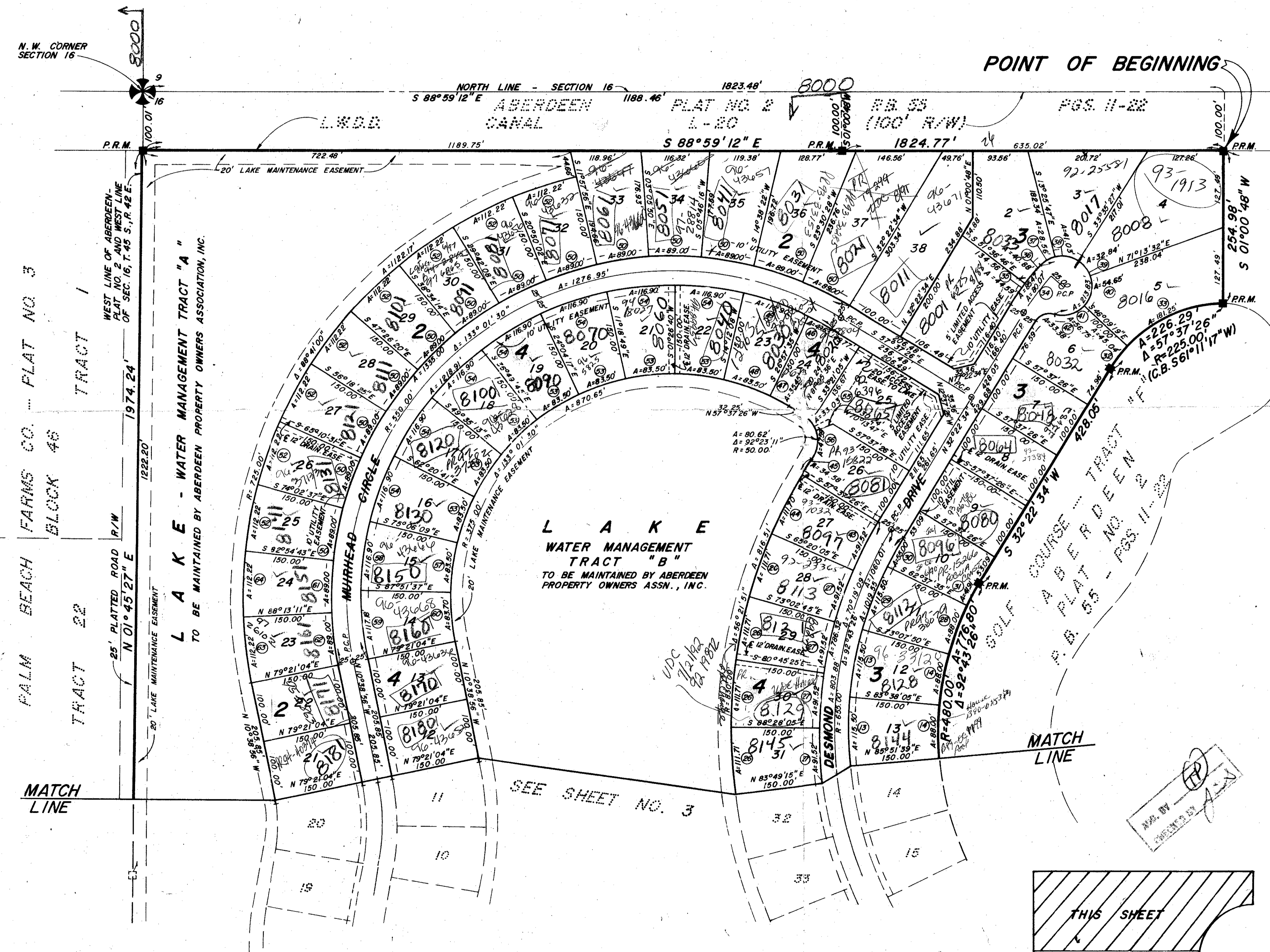
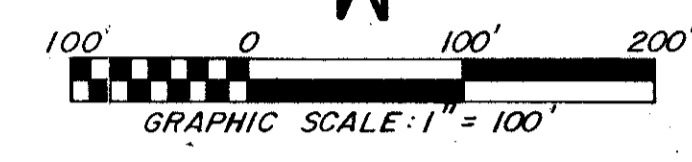
SECTION 16, TOWNSHIP 45 SOUTH, RANGE 42 EAST

BEING A REPLAT OF A PORTION OF ABERDEEN - PLAT NO. 2 AS RECORDED IN PLAT BOOK 55, PAGES 11 THRU 22 PUBLIC RECORDS OF PALM BEACH COUNTY, FLORIDA

PALM BEACH COUNTY, FLORIDA - MAY, 1988.

# 182

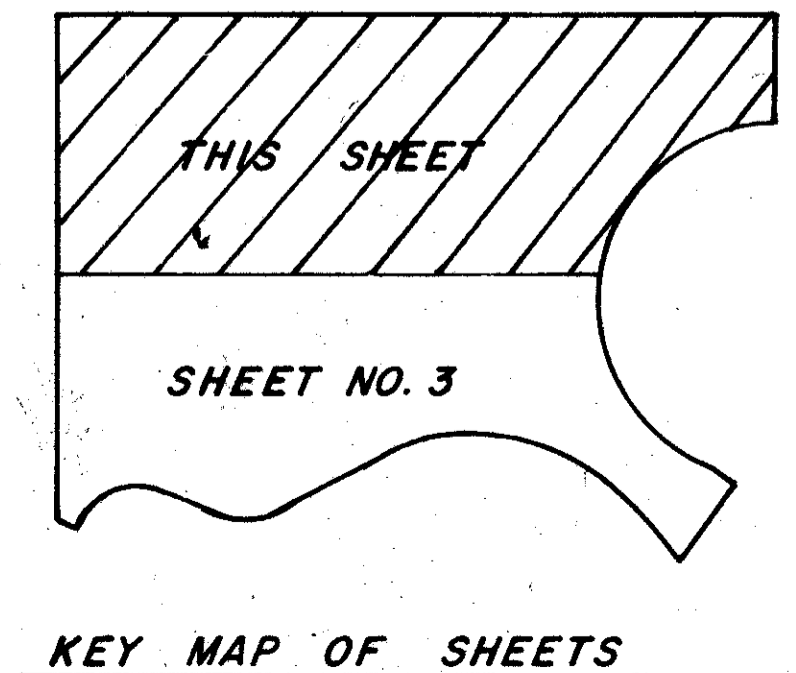
STATE OF FLORIDA  
COUNTY OF PALM BEACH  
This Plat was filed for record at \_\_\_\_\_ M.  
this \_\_\_\_\_ day of \_\_\_\_\_  
19 \_\_\_\_\_ and duly recorded in Plat Book No. \_\_\_\_\_  
on page \_\_\_\_\_  
JOHN B. DUNKLE, Clerk Circuit Court  
By \_\_\_\_\_, D.C.



**CURVE DATA**

CURVE NO.	RADIUS	DELTA	ARC LENGTH	CURVE NO.	RADIUS	DELTA	ARC LENGTH
C001	1025.00'	1°49'47"	32.73'	C046	525.00'	5°24'59"	49.63'
C002	975.00'	1°26'28"	24.52'	C047	375.00'	5°24'59"	35.45'
C003	350.00'	11°10'16"	58.24'	C048	375.00'	12°45'27"	75.50'
C004	300.00'	15°20'25"	93.71'	C049	525.00'	12°45'27"	118.90'
C005	300.00'	10°00'44"	83.84'	C050	575.00'	5°52'06"	89.00'
C006	300.00'	10°29'59"	54.98'	C051	325.00'	2°28'00"	121.77'
C007	150.00'	16°00'44"	41.92'	C052	725.00'	5°52'06"	112.22'
C008	150.00'	10°29'59"	27.49'	C053	375.00'	12°45'28"	83.50'
C009	680.00'	10°33'04"	125.22'	C054	525.00'	12°45'28"	118.90'
C010	679.96'	7°47'13"	92.41'	C055	50.00'	37°51'13"	33.03'
C011	629.96'	3°41'16"	40.55'	C056	50.00'	54°31'58"	47.59'
C012	479.96'	3°41'16"	30.89'	C057	375.00'	12°45'28"	83.50'
C013	630.00'	10°30'15"	115.50'	C058	525.00'	12°45'28"	116.90'
C014	480.02'	10°30'14"	88.00'	C059	525.00'	12°47'19"	117.18'
C015	75.00'	5°56'09"	7.77'	C060	375.00'	12°47'19"	83.70'
C016	75.00'	28°38'01"	37.48'	C061	575.00'	5°52'06"	89.00'
C017	75.00'	28°32'57"	34.75'	C062	575.00'	5°52'07"	89.00'
C018	25.00'	70°31'43"	30.77'	C063	725.00'	5°52'07"	112.22'
C019	375.00'	7°29'35"	49.04'	C064	725.00'	5°52'06"	112.22'
C020	375.00'	19°13'38"	125.84'	C065	375.00'	15°58'24"	78.37'
C021	375.00'	9°30'13"	42.57'	C066	525.00'	15°58'24"	105.71'
C022	225.00'	6°30'13"	25.54'	C067	375.00'	5°29'36"	62.13'
C023	225.00'	19°13'38"	75.50'	C068	525.00'	5°29'36"	86.99'
C024	225.00'	13°58'11"	54.86'	C069	225.00'	22°04'10"	86.67'
C025	175.00'	39°42'02"	121.26'	C070	225.00'	19°13'37"	75.50'
C026	630.00'	7°10'40"	111.71'	C071	301.55'	19°16'57"	75.65'
C027	679.96'	7°42'41"	91.52'	C072	375.00'	22°04'10"	144.44'
C028	479.99'	10°30'16"	88.00'	C073	375.00'	19°13'37"	125.84'
C029	629.97'	10°30'16"	115.50'	C074	375.00'	19°18'37"	126.84'
C030	630.00'	5°00'08"	55.00'	C075	175.00'	24°25'05"	74.58'
C031	480.03'	5°00'08"	41.91'	C076	175.00'	54°01'26"	195.55'
C032	225.00'	11°28'07"	45.04'	C077	175.00'	10°37'07"	32.43'
C033	225.00'	151°25'19"	181.25'	C078	25.00'	24°25'04"	10.65'
C034	400.00'	1°28'07"	80.07'	C079	25.00'	10°37'07"	4.63'
C035	425.00'	8°00'40"	44.59'	C080	25.00'	64°01'26"	27.94'
C036	425.00'	5°27'27"	40.48'	C081	50.00'	60°00'00"	52.36'
C037	50.00'	32°43'32"	26.56'	C082	679.96'	12°16'52"	145.68'
C038	50.00'	47°01'14"	41.03'	C083	50.00'	31°11'26"	27.82'
C039	50.00'	37°38'05"	32.84'	C084	50.00'	82°10'07"	71.70'
C040	50.00'	62°37'09"	54.65'	C085	1025.00'	3°05'42"	55.37'
C041	50.00'	68°01'41"	56.75'	C086	1025.00'	5°55'20"	99.99'
C042	25.00'	78°29'48"	33.38'				
C043	680.00'	7°42'39"	91.52'				
C044	630.03'	2°23'12"	111.70'				
C045	630.03'	2°23'12"	34.58'				

1645/42  
SUBDIVISION - Aberdeen #8  
PAGE 182  
BOOK 59 B  
FLOOD MAP # 159A  
FLOOD ZONE ZONING RS  
DATE 5/9  
ZIP CODE 33437  
SE  
PUD NAME CMB



59/182

Pt. 80-153  
Pod A

0270-010

**ROSSI AND MALAVASI**  
ENGINEERS, INC.  
WEST PALM BEACH,  
FLORIDA

**ABERDEEN**  
PLAT NO. 8  
IN 3 SHEETS SHEET NO. 2

Date	FEBRUARY, 1988	Designed	S. WEISS	Scale	1" = 100'
Approved		Drawn	D. FREDERICK	Job No.	
		Checked		File No.	2 of 3