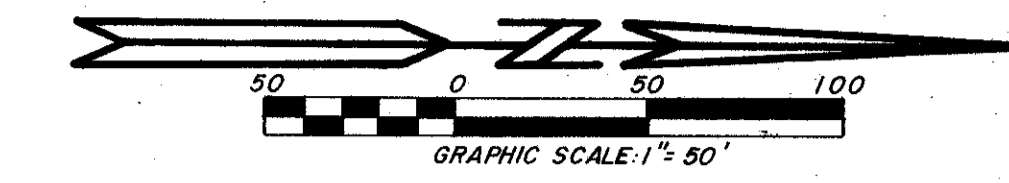


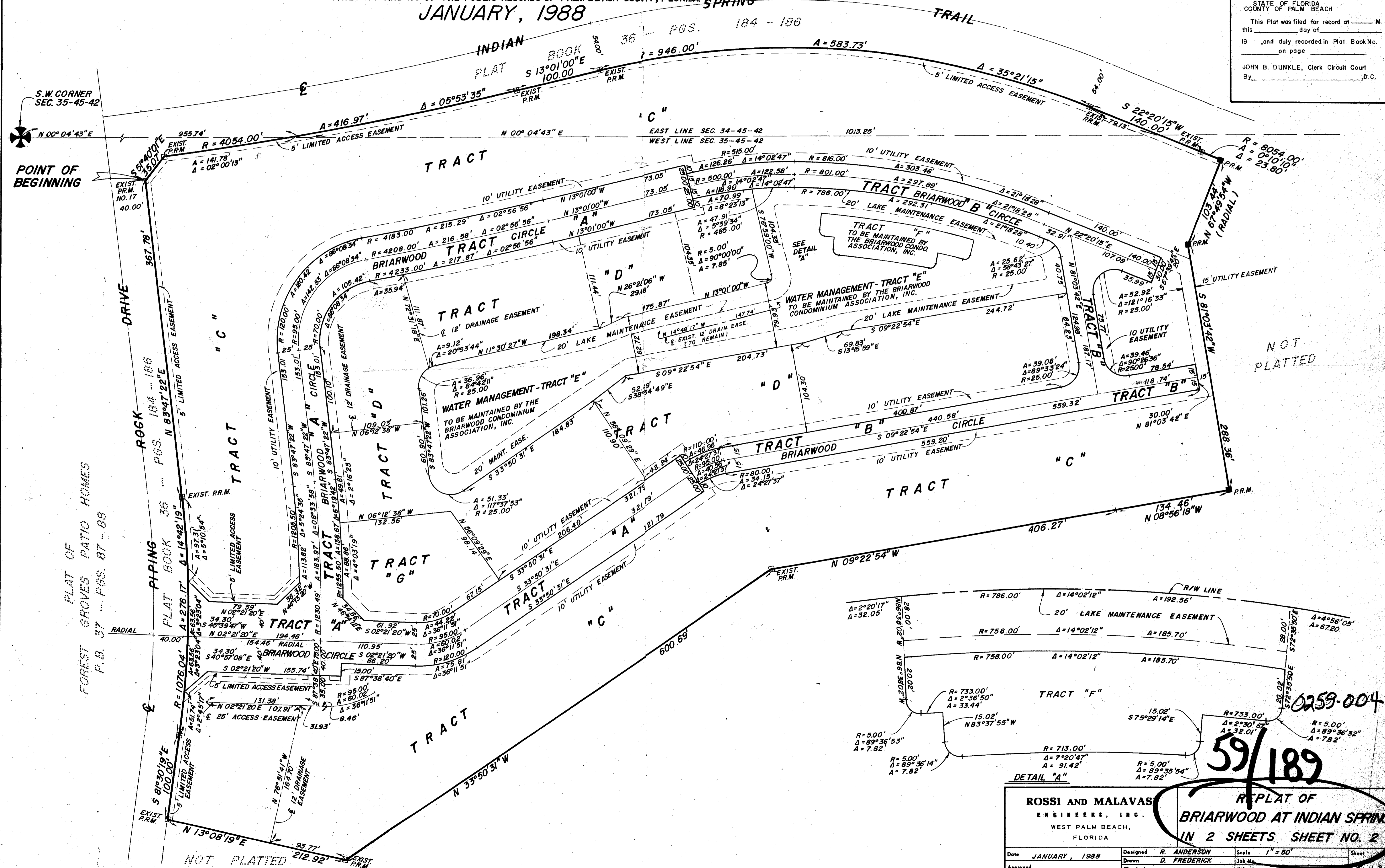
# REPLAT OF BRIARWOOD AT INDIAN SPRING

A PORTION OF A P.U.D.  
SECTIONS 34 & 35 TOWNSHIP 45 SOUTH, RANGE 42 EAST  
BEING A REPLAT OF BRIARWOOD AT INDIAN SPRING AS RECORDED IN PLAT BOOK 58,  
PAGES 114 AND 115 OF THE PUBLIC RECORDS OF PALM BEACH COUNTY, FLORIDA, SPRING  
JANUARY, 1988

# 189



STATE OF FLORIDA  
COUNTY OF PALM BEACH  
This Plat was filed for record on \_\_\_\_\_ M.  
this \_\_\_\_\_ day of \_\_\_\_\_  
19 \_\_\_\_\_, and duly recorded in Plat Book No. \_\_\_\_\_  
on page \_\_\_\_\_  
JOHN B. DUNKLE, Clerk Circuit Court  
By \_\_\_\_\_, D.C.



34435745742  
BRIARWOOD AT INDIAN SPRING  
FROM 89 34-24 A  
FLOOD MAP # 35-24 B  
ZONING RS  
ZIP CODE 33457

NOT  
PLATTED

0259-004

59/189

ROSSI AND MALAVAS ENGINEERS, INC. WEST PALM BEACH, FLORIDA			
Date	JANUARY, 1988	Designed	R. ANDERSON
Drawn	D. FREDERICK	Scale	1" = 50'
Checked		Job No.	
File No.		Sheet	2 of 2