

# ALLEGRO

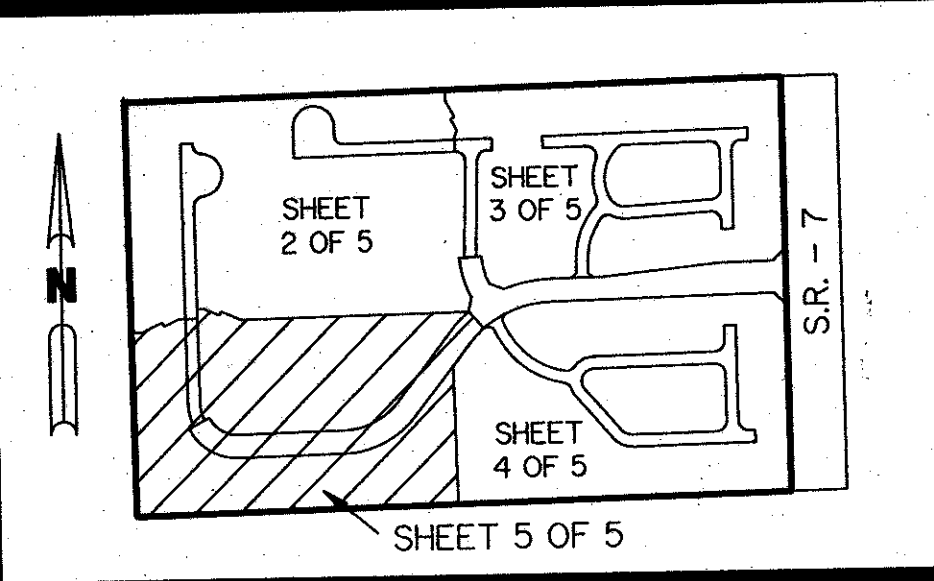
(A P.U.D.)

BEING A REPLAT OF A PORTION OF LOTS 6 THROUGH 11, INCLUSIVE ACCORDING TO THE FLORIDA FRUITLANDS COMPANY'S SUBDIVISION NO.2, AS RECORDED IN PLAT BOOK 1, PAGE 102 OF THE PUBLIC RECORDS OF PALM BEACH COUNTY, FLORIDA, TOGETHER WITH THE VACATED ROAD RIGHT-OF-WAY LYING TO THE SOUTH PER O.R. BOOK 1841, PAGES 1960 THROUGH 1963, OF THE PUBLIC RECORDS OF PALM BEACH COUNTY, FLORIDA. IN SECTION 25, TOWNSHIP 47 SOUTH, RANGE 41 EAST, PALM BEACH COUNTY, FLORIDA.

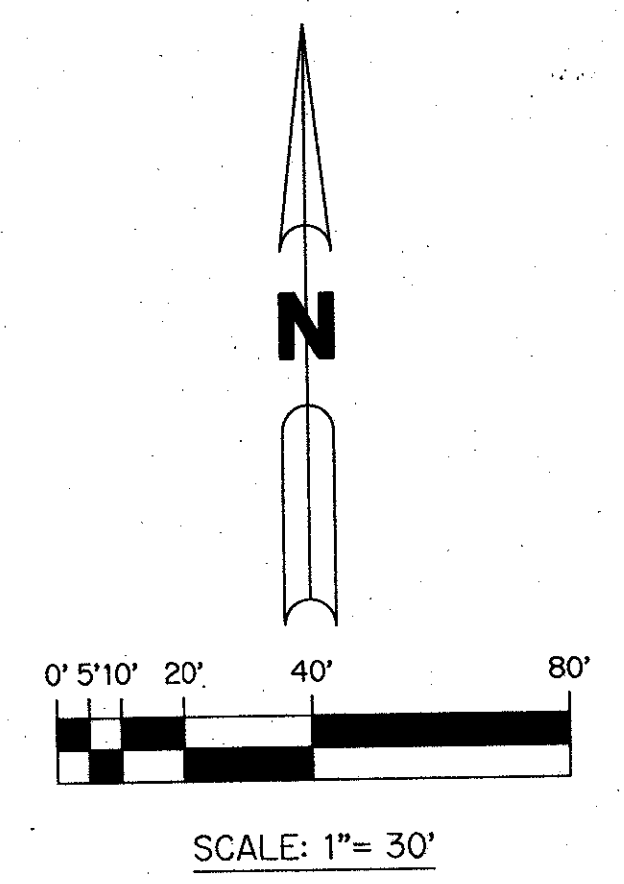
SHEET 5 OF 5

OCTOBER, 1987

THIS INSTRUMENT PREPARED BY  
 PERRY C. WHITE P.L.S. 4213 STATE OF FLORIDA  
 LAWSON, NOBLE AND ASSOCIATES, INC.  
 ENGINEERS PLANNERS TESTING SURVEYORS  
 BOYNTON BEACH, FLORIDA



KEY MAP  
N.T.S.



LOT 10 OF FLORIDA FRUIT  
 LANDS SUBDIVISION NO. 2  
 P.B. 1, PG. 102

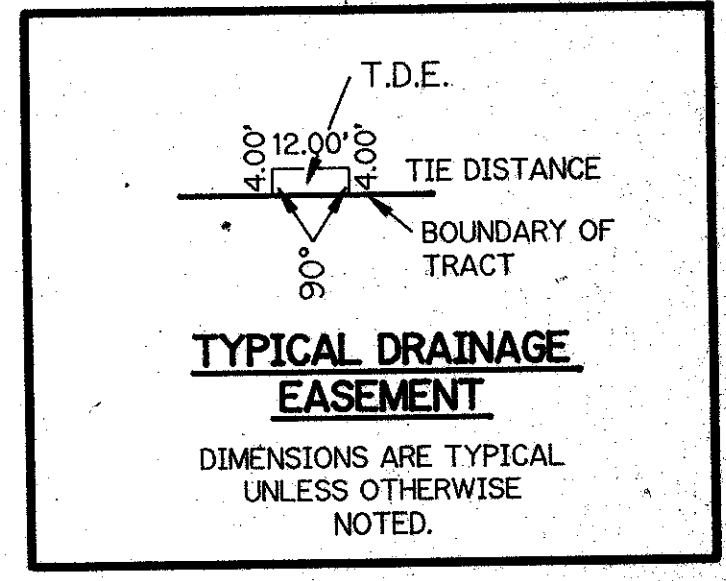
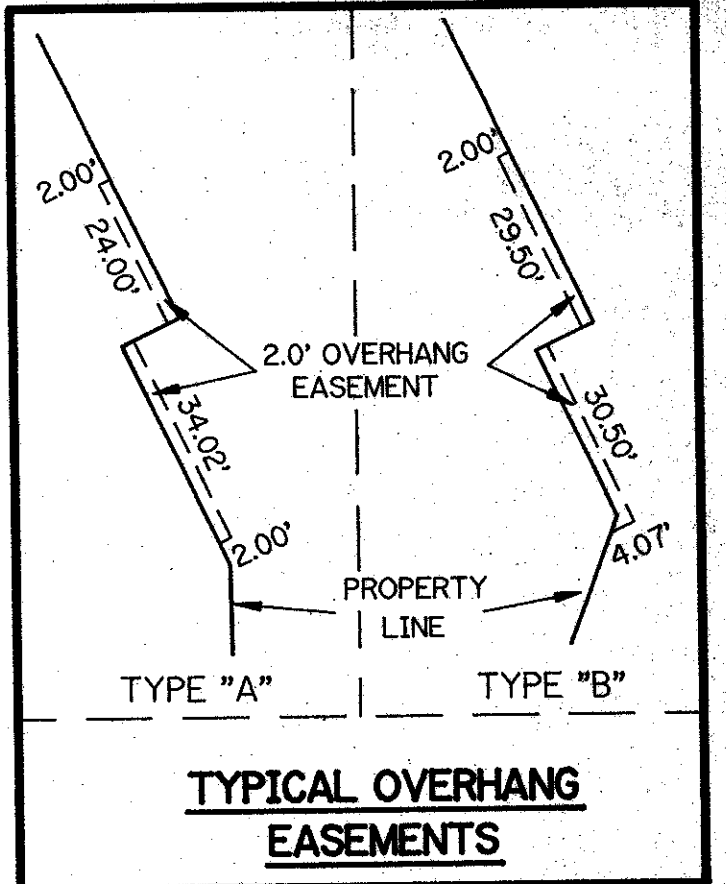
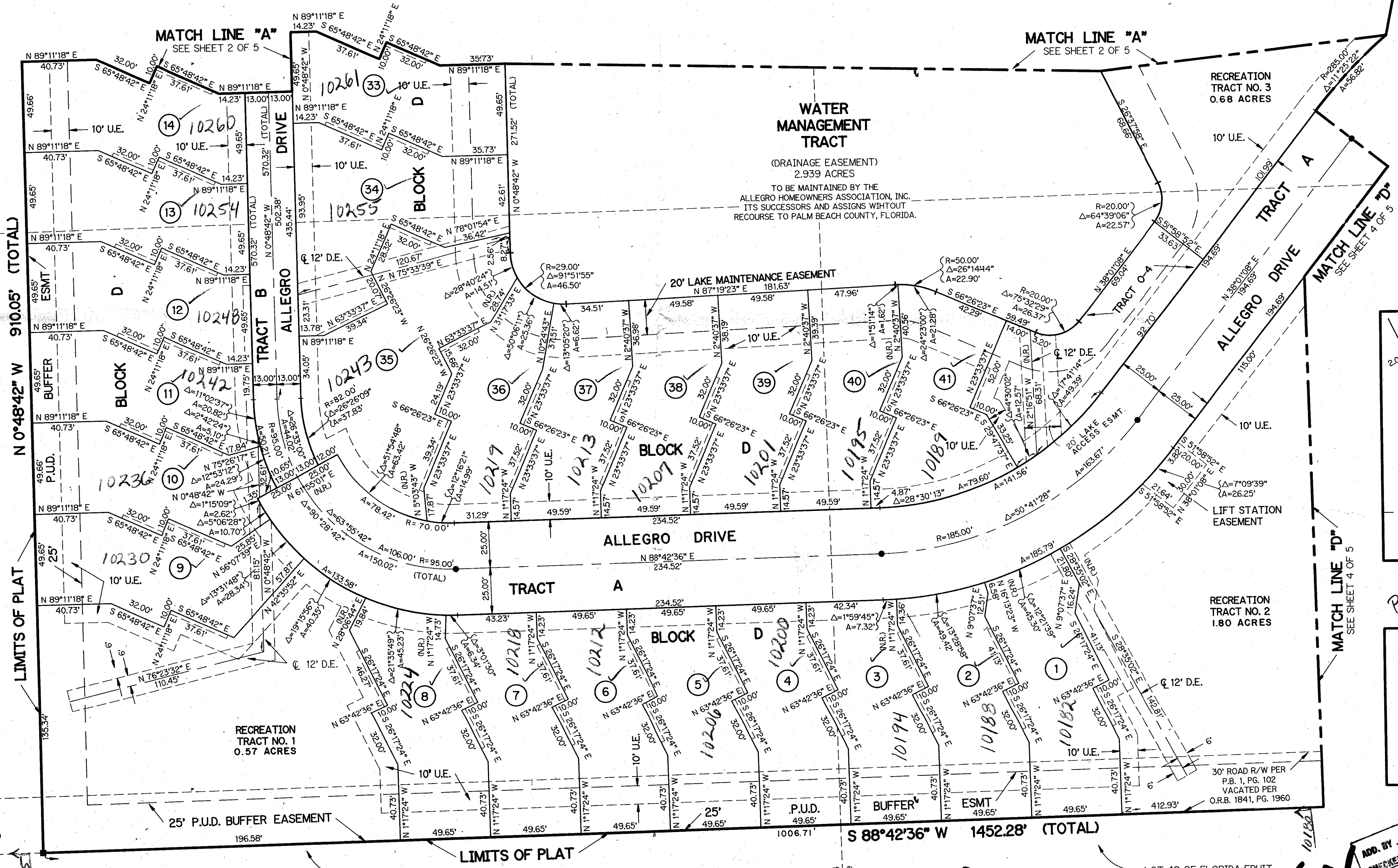
LOT 10,  
 LOT 9

LOT 9 OF FLORIDA FRUIT  
 LANDS SUBDIVISION NO. 2  
 P.B. 1, PG. 102

30' ROAD R/W PER  
 VACTED PER  
 O.R.B. 1841, PG. 1960

LOT 64 OF FLORIDA FRUIT  
 LANDS SUBDIVISION NO. 2  
 P.B. 1, PG. 102

LOT 49 OF FLORIDA FRUIT  
 LANDS SUBDIVISION NO. 2  
 P.B. 1, PG. 102



*Handwritten notes:*  
 25/47/1  
 Allegro 7 100B  
 60' 40' RS  
 69 33/32

# ALLEGRO

ADD. BY [Signature]  
 CHECKED BY [Signature]  
 0525-001  
 SHEET 5 OF 5