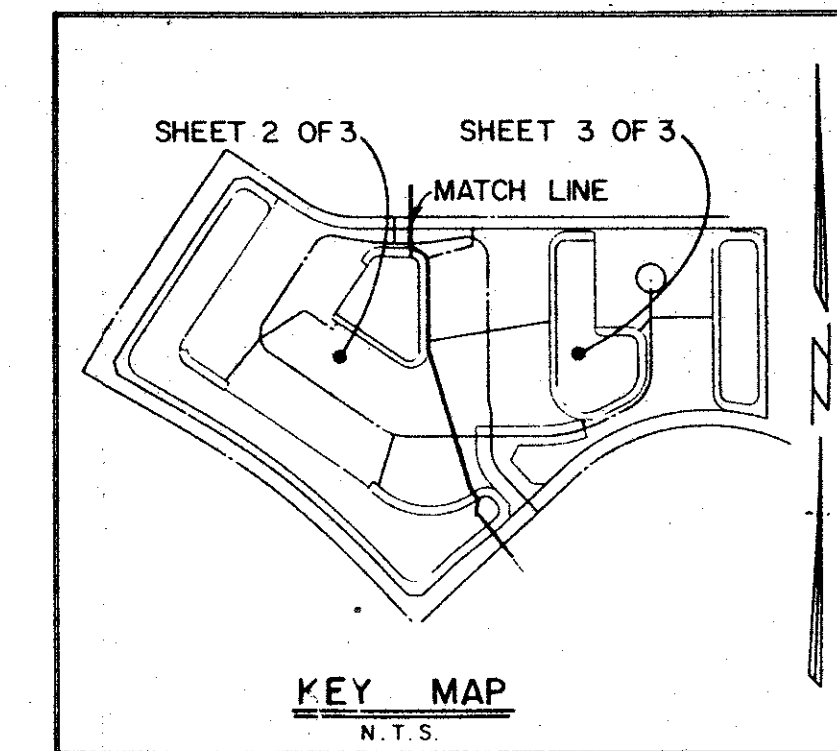


# ABERDEEN PLAT NO. 11

A PLANNED UNIT DEVELOPMENT  
 LYING IN SECTION 15, TOWNSHIP 45 SOUTH, RANGE 42 EAST,  
 PALM BEACH COUNTY, FLORIDA.

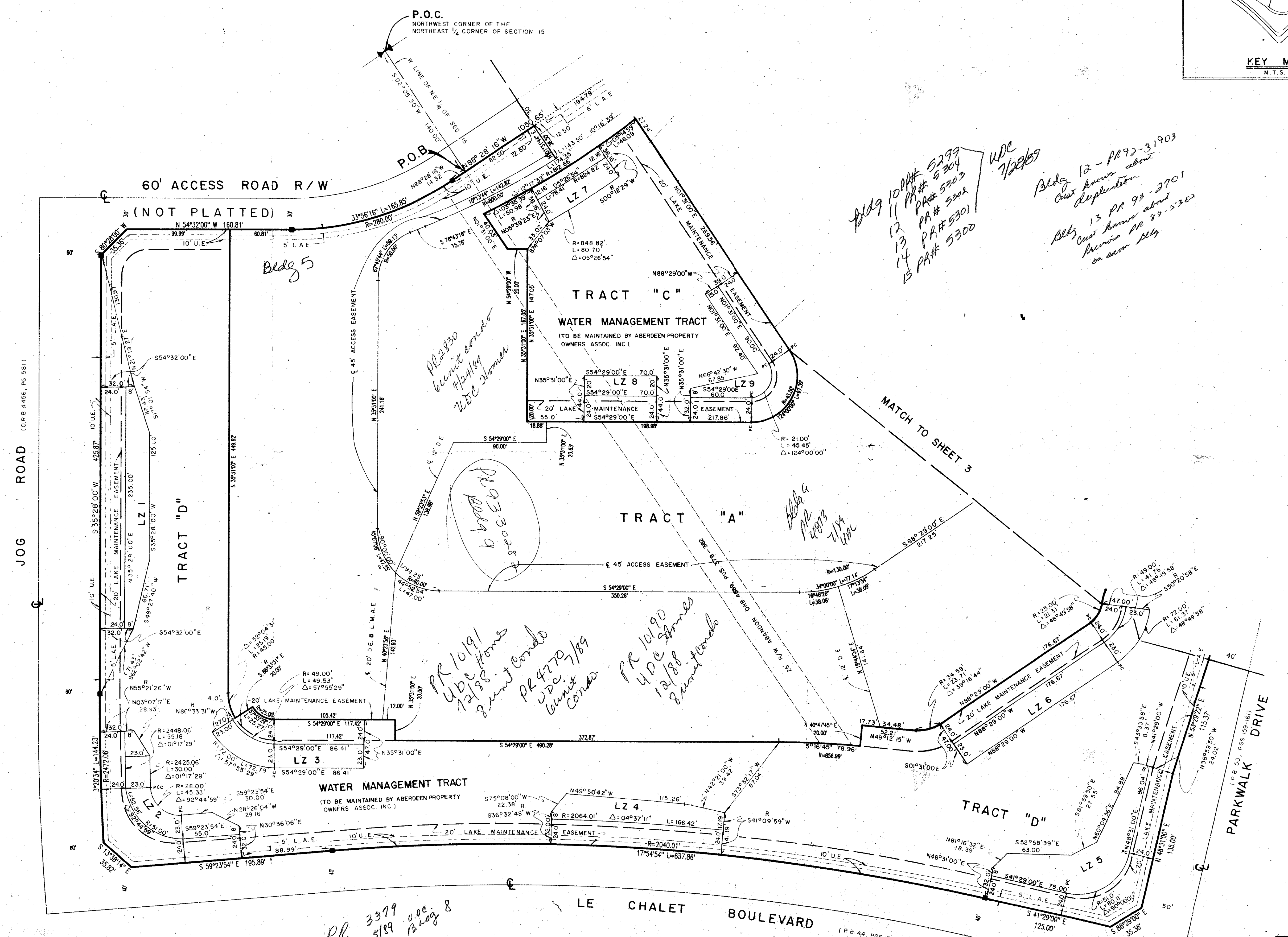
SHEET 2 OF 3

MAY, 1988.



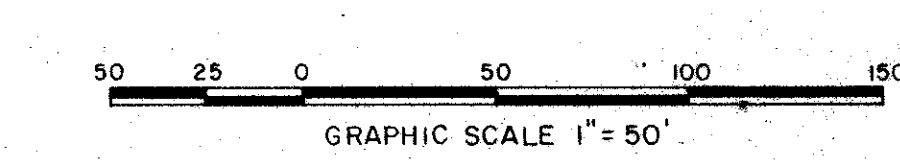
# 39

STATE OF FLORIDA  
 COUNTY OF PALM BEACH  
 This Plat was filed for record at \_\_\_\_\_  
 M. this \_\_\_\_\_ day of \_\_\_\_\_, 19\_\_\_\_  
 and duly recorded in Plat Book No. \_\_\_\_\_  
 on Page \_\_\_\_\_  
 John B. Dunkle, Clerk of the Circuit Court  
 By \_\_\_\_\_ D.C.



SURVINGTON  
 BOOK NO.  
 FLOOD ZONE  
 QUAD # 34  
 SZ  
 PUD NAME

PAGE 39  
 FLOOD MAP # 157  
 ZONING  
 ZIP CODE 33437



0270-013

Landmark Surveying & Mapping Inc.  
 1850 FOREST HILL BOULEVARD  
 PH. (305)433-5405 SUITE 200 W.P.B. FLORIDA

ABERDEEN PLAT NO. 11

60/39

Pet. 80-153

PR 3379  
 5/89  
 WDC  
 13/08