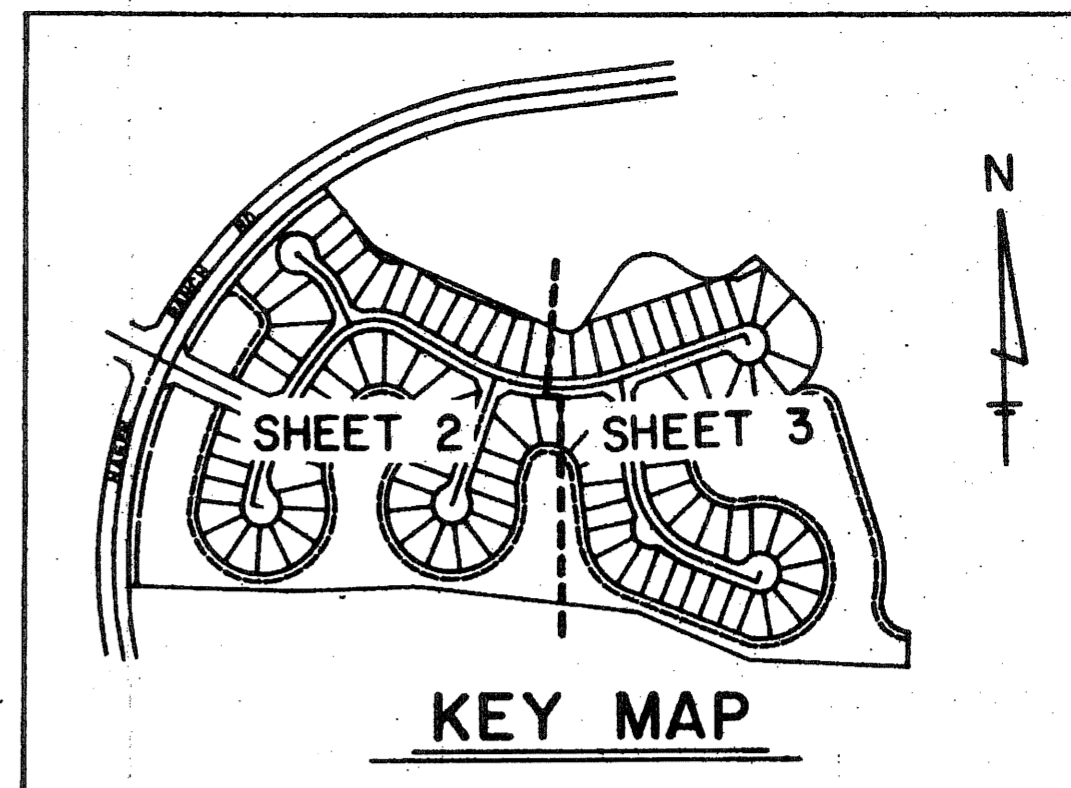


ABERDEEN PLAT NO. 12

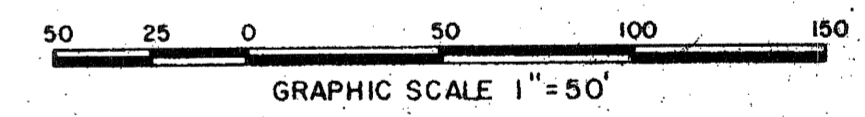
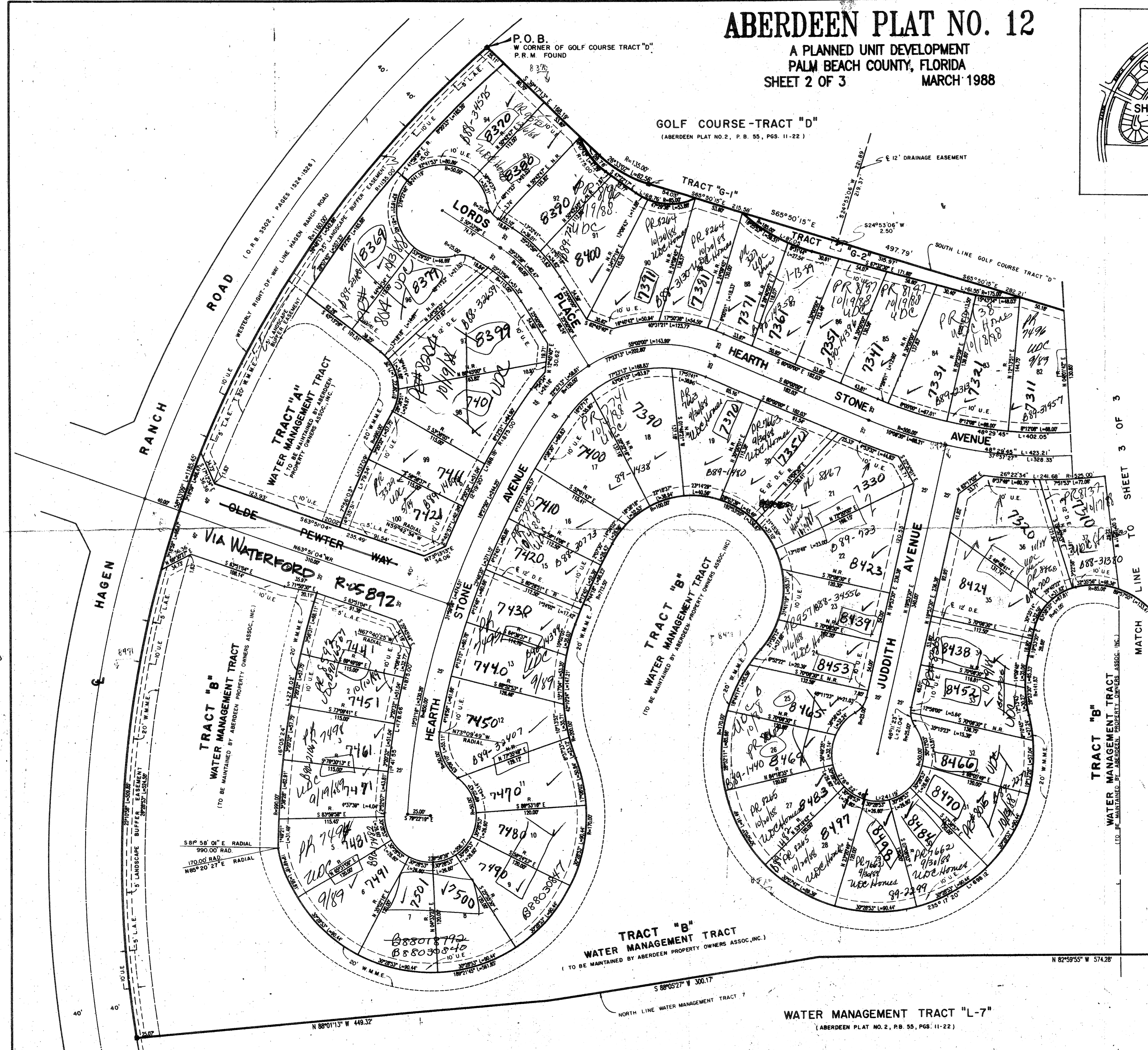
A PLANNED UNIT DEVELOPMENT
PALM BEACH COUNTY, FLORIDA
SHEET 2 OF 3
MARCH 1988



42

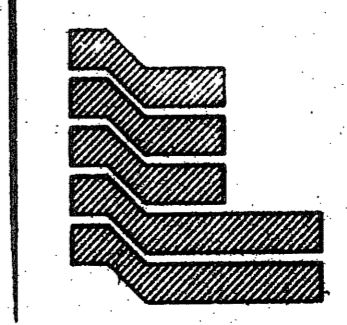
STATE OF FLORIDA
COUNTY OF PALM BEACH
This Plat was filed for record at _____
M. this ____ day of _____ 19____
and duly recorded in Plat Book No. _____
on Page _____
John B. Dunkle, Clerk of the Circuit Court
By _____ D.C.

Subdivision # Aberdeen #12
BOOK 60 PAGE 42
FLOOD-ZONE B FLOOD MAP # 85A
QUAD # 49 ZONING
SS ZIP CODE 33411
PLSD NAME
8/25/88



ADD BY [Signature]
CHECKED BY [Signature]

Pet. 80-153
0270-014
60/42



Landmark Surveying & Mapping Inc.
1850 FOREST HILL BOULEVARD
PH. (305) 433-5405 SUITE 100 W.P.B. FLORIDA

ABERDEEN PLAT NO. 12