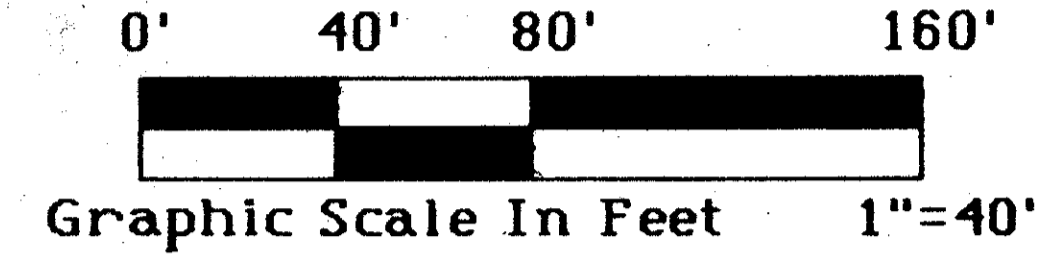
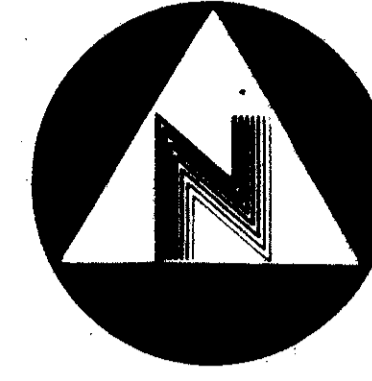


-Cypress Isle At The Polo Club-

55

January, A.D., Nineteen Hundred Eighty Eight

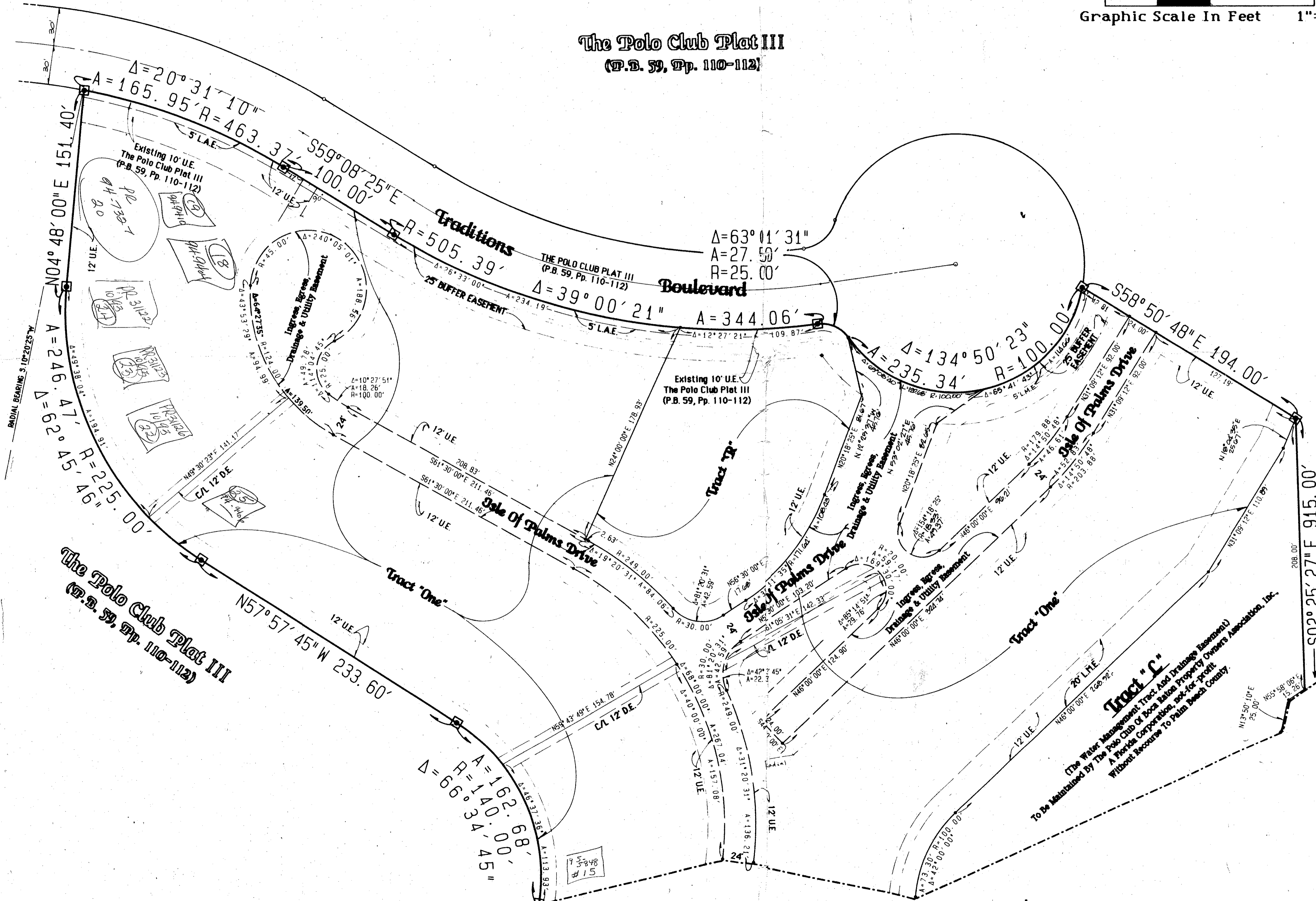
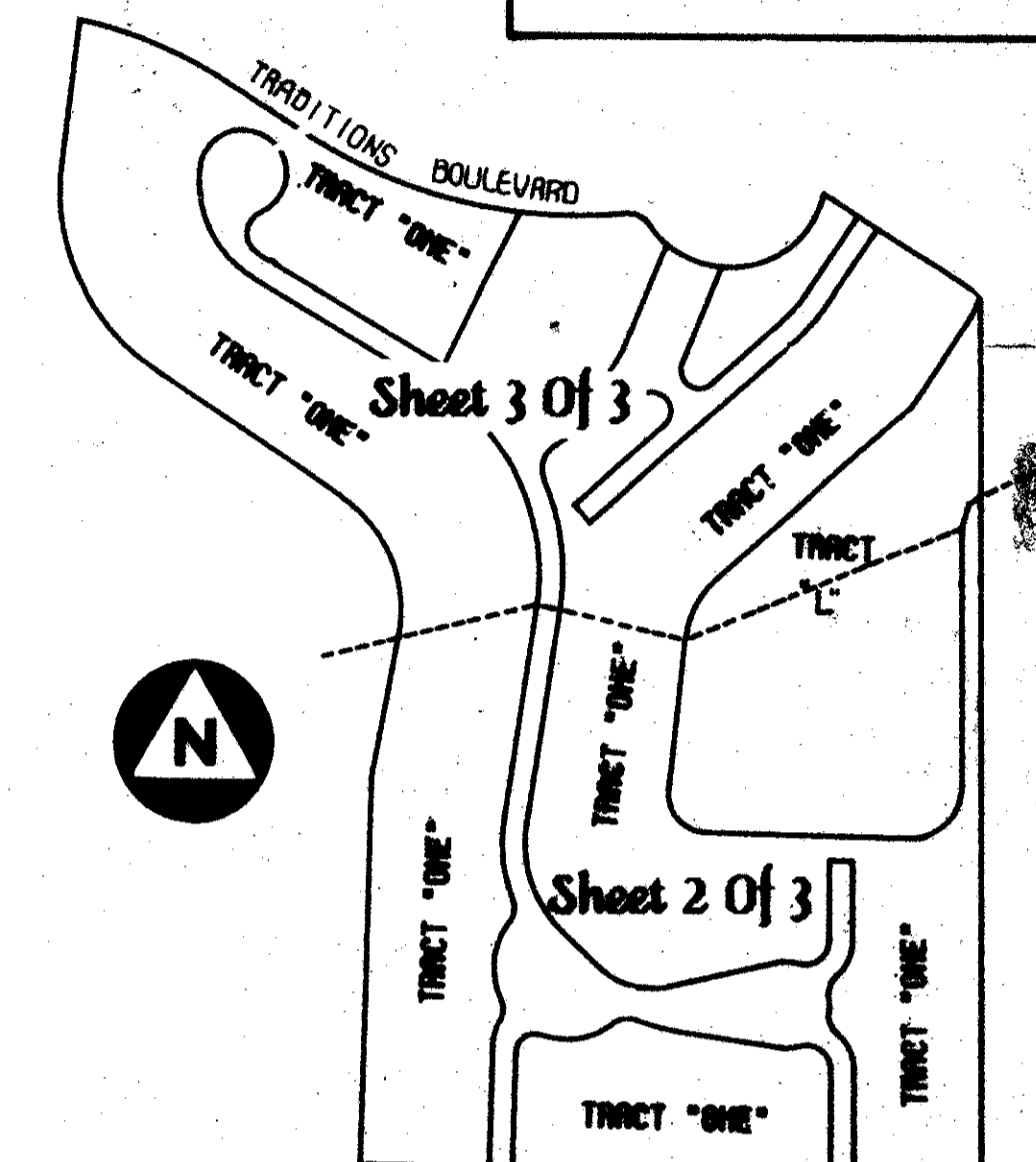
Sheet Three Of Three



State Of Florida)
County Of Palm Beach)
This Plat was filed for record at
this day of _____
A.D., 1988, and duly recorded
in Plat Book _____ on
Pages _____ through _____
John B. Dunkle,
Clerk of the Circuit Court.
By: _____
Deputy Clerk

SUBDIVISION * Cypress Isle At The Polo Club
BOOK 605 PAGE 53
FLOOD ZONE FLOOD MAP # 220B
GRID # 37 ZONING 33437
SE
CDD NAME The Polo Club, P.D.

The Polo Club Plat III (P.B. 59, Pp. 110-112)



The Polo Club Plat III (P.B. 59, Pp. 110-112)

- Legend:**
- ⊠ Indicates A Permanent Reference Monument * 2424 (P.R.M.)
 - ⊙ Indicates A Permanent Control Point * 2424 (P.C.P.)
 - D.E. Indicates A Drainage Easement
 - U.E. Indicates A Utility Easement
 - L.A.E. Indicates A Limited Access Easement
 - L.M.E. Indicates A Lake Maintenance Easement

For Match See
Sheet 2 of 3

For Match See
Sheet 2 of 3

0436-008
This instrument was prepared by Wm. R. Van Campen, R.L.S., in and for the offices of Bench Mark Land Surveying & Mapping, Inc., 4152 West Blue Heron Boulevard, Suite 121, Riviera Beach, FL, 33404.

BENCH MARK
LAND SURVEYING & MAPPING, INC.
WEST PALM BEACH, FLORIDA - RIVIERA BEACH, FLORIDA

-Record Plat-
Cypress Isle At The Polo Club

OWN	DATE	WD. NO.
SCALE	SIZE	SHEET 3 OF 3

60/55