

PLAT 2 OF LA CASA

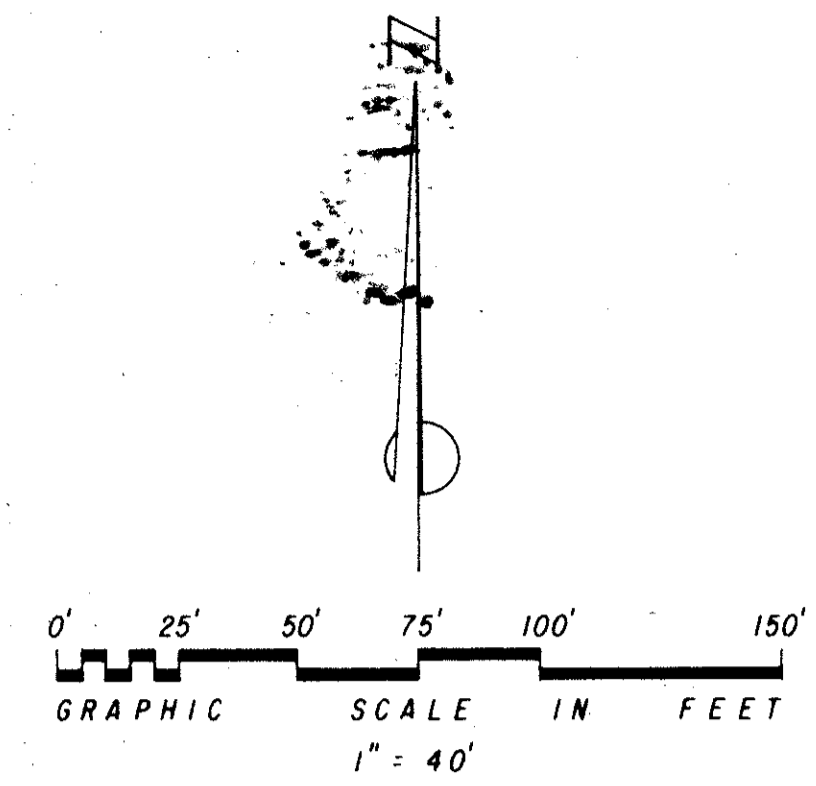
A P. U. D.

DECEMBER 1987 SHEET 2 OF 2

EWING AND SHIRLEY, INC.

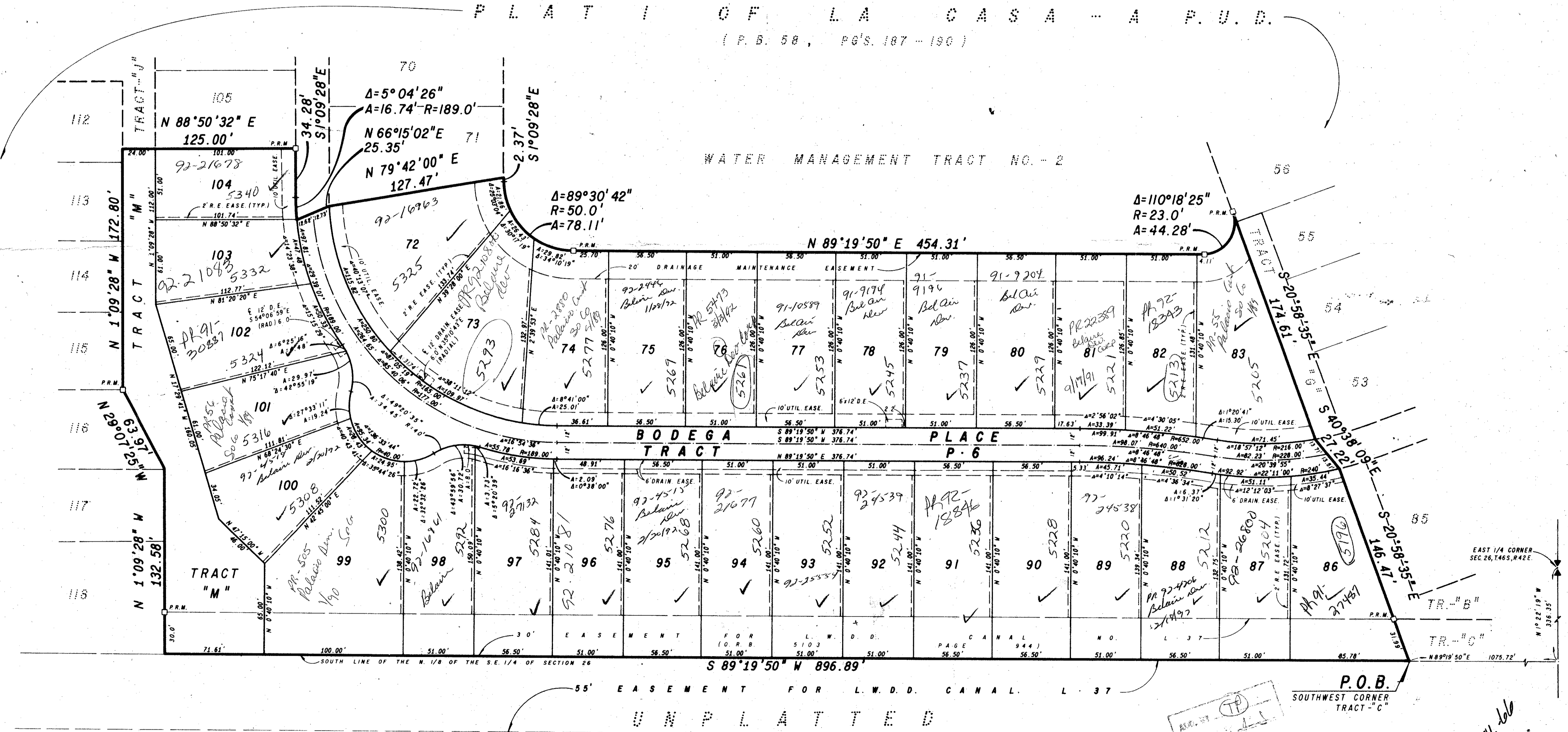
land surveyors and planners

3767 Lake Worth Road • Suite 118 • Lake Worth Florida 33461 • (305) 968-0421



PLAT 1 OF LA CASA - A P. U. D.
 (P. B. 58 , PG'S. 187 - 190)

26/46/42
 La Casa #2
 60 B
 77
 220A
 39
 33445



55' EASEMENT FOR L.W.D.D. CANAL L 37
 UNPLATTED

P.O.B.
 SOUTHWEST CORNER
 TRACT - C

Ref. 86-66

0509-001

PLAT 2 OF LA CASA 600/78