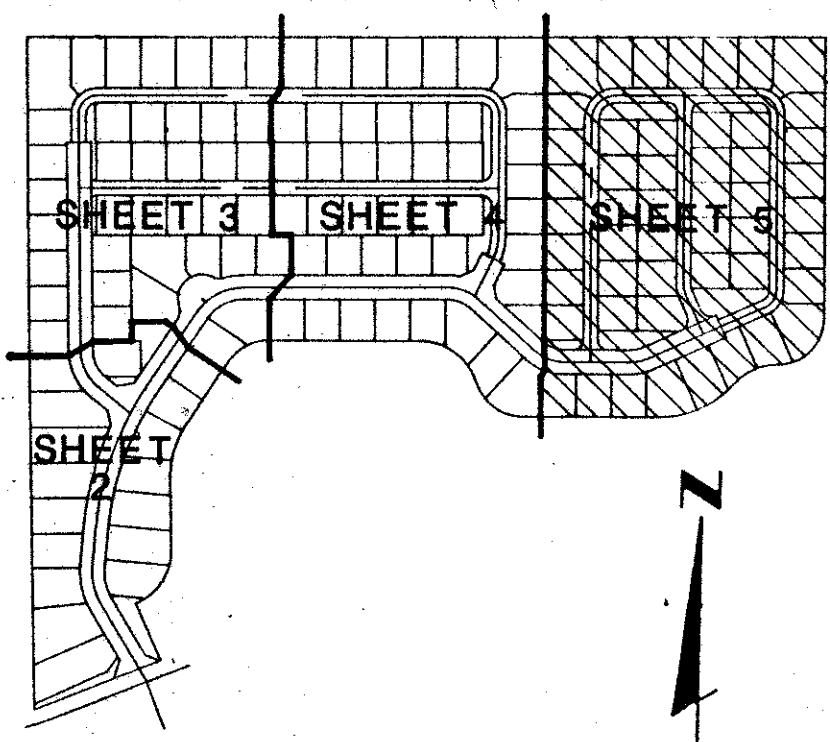
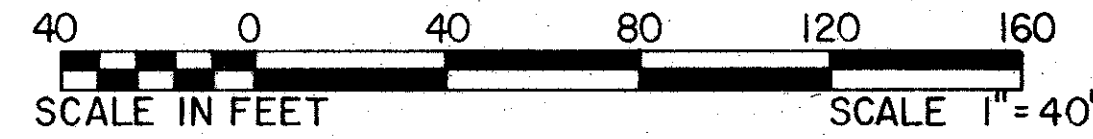


SONATA AT MISSION BAY P.U.D.

BEING A REPLAT OF TRACT "B" OF MISSION BAY P.U.D., AS RECORDED IN PLAT BOOK 53, PAGES 112 THRU 120, OF THE PUBLIC RECORDS OF PALM BEACH COUNTY, FLORIDA.

IN PART OF SECTIONS 13 AND 14, TOWNSHIP 47 SOUTH, RANGE 41 EAST PALM BEACH COUNTY, FLORIDA IN FIVE SHEETS SHEET NO. 5

GEE & JENSON
ENGINEERS - ARCHITECTS - PLANNERS, INC.
WEST PALM BEACH, FLORIDA
DECEMBER 1987



KEY MAP

STATE OF FLORIDA
COUNTY OF PALM BEACH
This plat was filed for
record at _____ M. this day
of _____ 1988, and duly
recorded in Plat Book No. _____
on Pages _____ thru _____.
JOHN B. DUNKLE
Clerk Circuit Court
By: _____ D.C.

MATCH LINE SHEET NO. 4

Handwritten notes:
66-68-69-70-71-72-73-74-75-76-77-78-79-80-81-82-83-84-85-86-87-88-89-90-91-92-93-94-95-96-97-98-99-00
MISSION BAY P.U.D.
TRACT NO. 12
PLAT BOOK 53, PAGE 112-120

MISSION BAY P.U.D.
(DRAINAGE EASEMENT)
WATER MANAGEMENT & RECREATION
TRACT NO. 12
PLAT BOOK 53, PAGE 112-120

PLAT LIMITS

PLAT LIMITS

SOUTHERLY BOUNDARY

FOUND
EXIST. PRM
3864

MISSION BAY P.U.D.
(DRAINAGE EASEMENT)
WATER MANAGEMENT & RECREATION
TRACT NO. 12
PLAT BOOK 53, PAGE 112-120

20' LAKE MAINTENANCE
EASEMENT
P.B.53, PG.112-120

ADD. BY
CHECKED BY

COMPUTED D.W.L./C.A.P.
DRAWN D.W.L./C.A.P.
CHECKED J.H.D.
APPROVED P.L.M.
REVISION

JOB NO.87-508.1

SONATA AT MISSION BAY P.U.D.

60/85

Handwritten note:
Has been reduced to a 15' Buffer
per Bill Young Abroad

Handwritten note:
Sec. 13

