

# GLENEAGLES PLAT TEN

(PART OF GLENEAGLES P.U.D.)

SITUATE IN SECTION 21, TOWNSHIP 46 SOUTH, RANGE 42 EAST, PALM BEACH COUNTY, FLORIDA

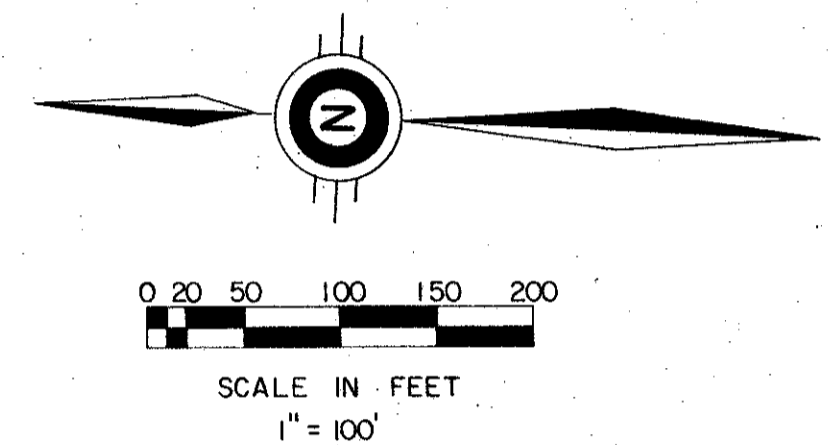
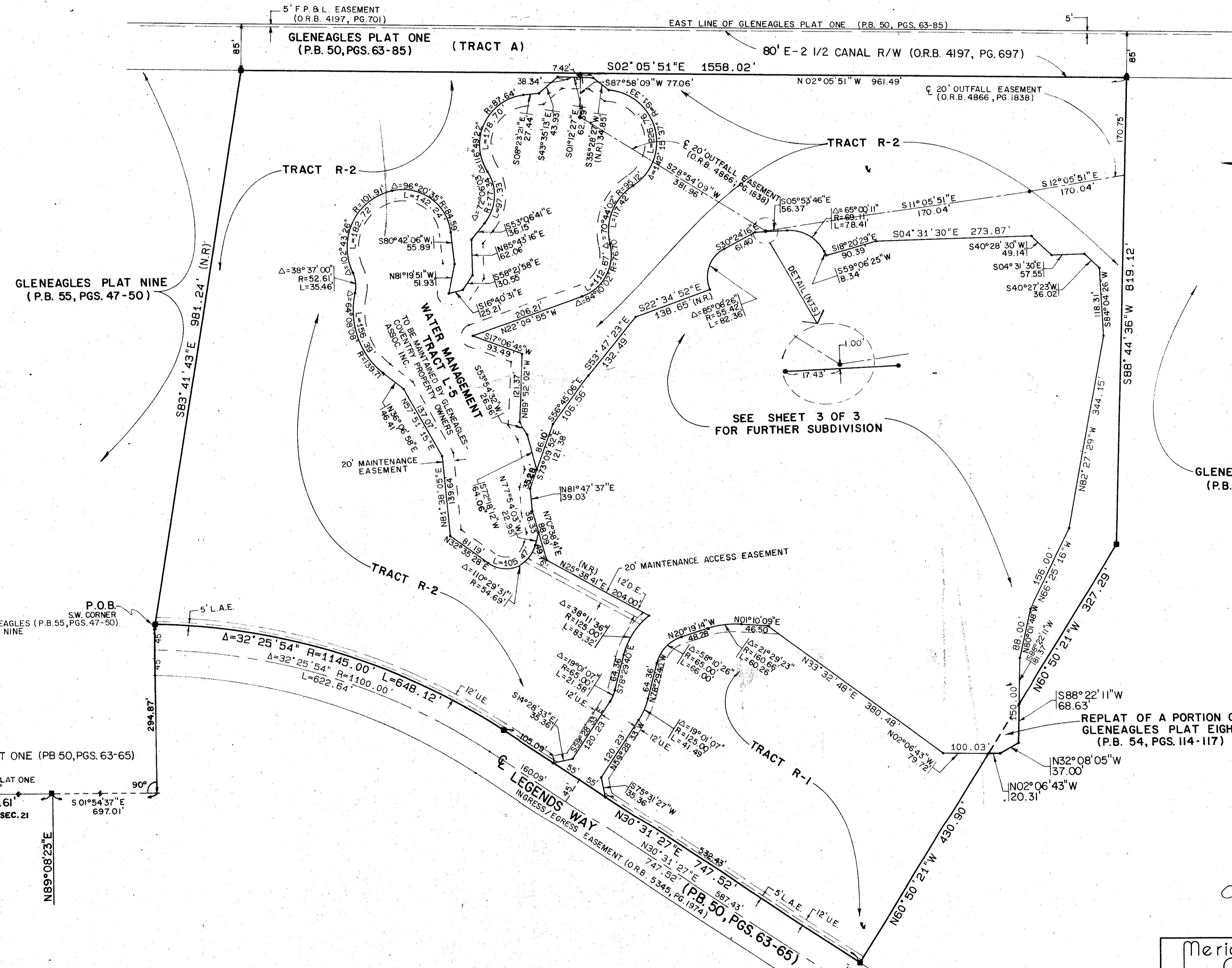
BEING A REPLAT OF A PORTION OF GLENEAGLES PLAT ONE (P.B. 50, PGS. 63-65) AND

A PORTION OF GLENEAGLES PLAT EIGHT (P.B. 54, PGS. 114-117)

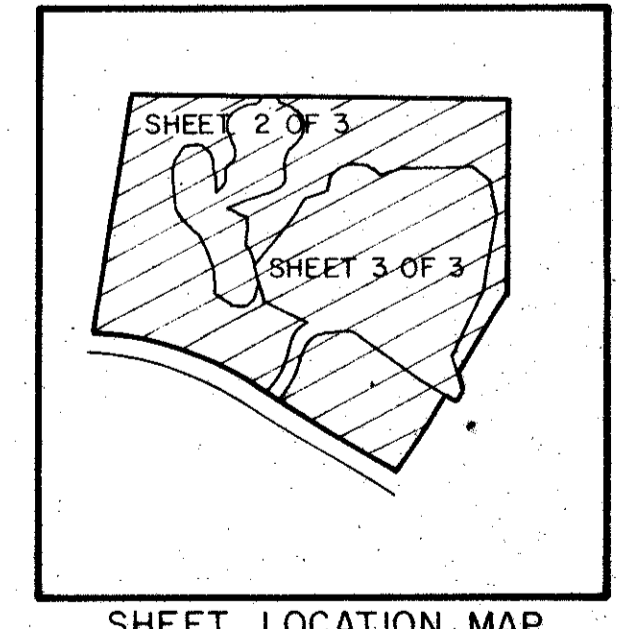
1988.

SHEET 2 OF 3

STATE OF FLORIDA  
 COUNTY OF PALM BEACH  
 THIS PLAT WAS FILED FOR  
 RECORD \_\_\_\_\_ DAY OF \_\_\_\_\_  
 AD, 1988 AND DULY RECORDED  
 IN PLAT BOOK \_\_\_\_\_ ON PAGES  
 \_\_\_\_\_ AND \_\_\_\_\_  
 JOHN B. DUNKLE, CLERK  
 BY: \_\_\_\_\_, D.C.



GLENEAGLES PLAT EIGHT  
 (P.B. 54, PGS. 114-117)



214644  
 SUBMISSION # 214644  
 BOOK 66 PG. 87  
 FLOOD LINE B  
 QUAD # 57  
 SHEET # 87  
 PUD NAME Gleneagles P.U.D.

0230-001

60/87

Meridian Surveying and mapping inc.  
 2000 LOMBARD STREET WEST PALM BEACH, FL.

DRAWN	D.B.A.	DATE	JUNE 1987
CHECKED	C.F.P.	SCALE	1" = 100'
DRAWING NO.	09219PL		

GLENEAGLES PLAT TEN  
 SEC. 21, TWP. 46S, RGE. 42E