

GLENEAGLES PLAT TEN

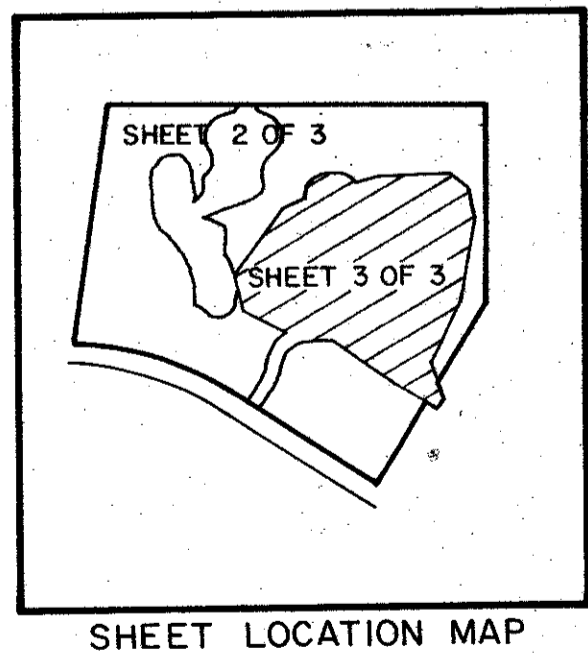
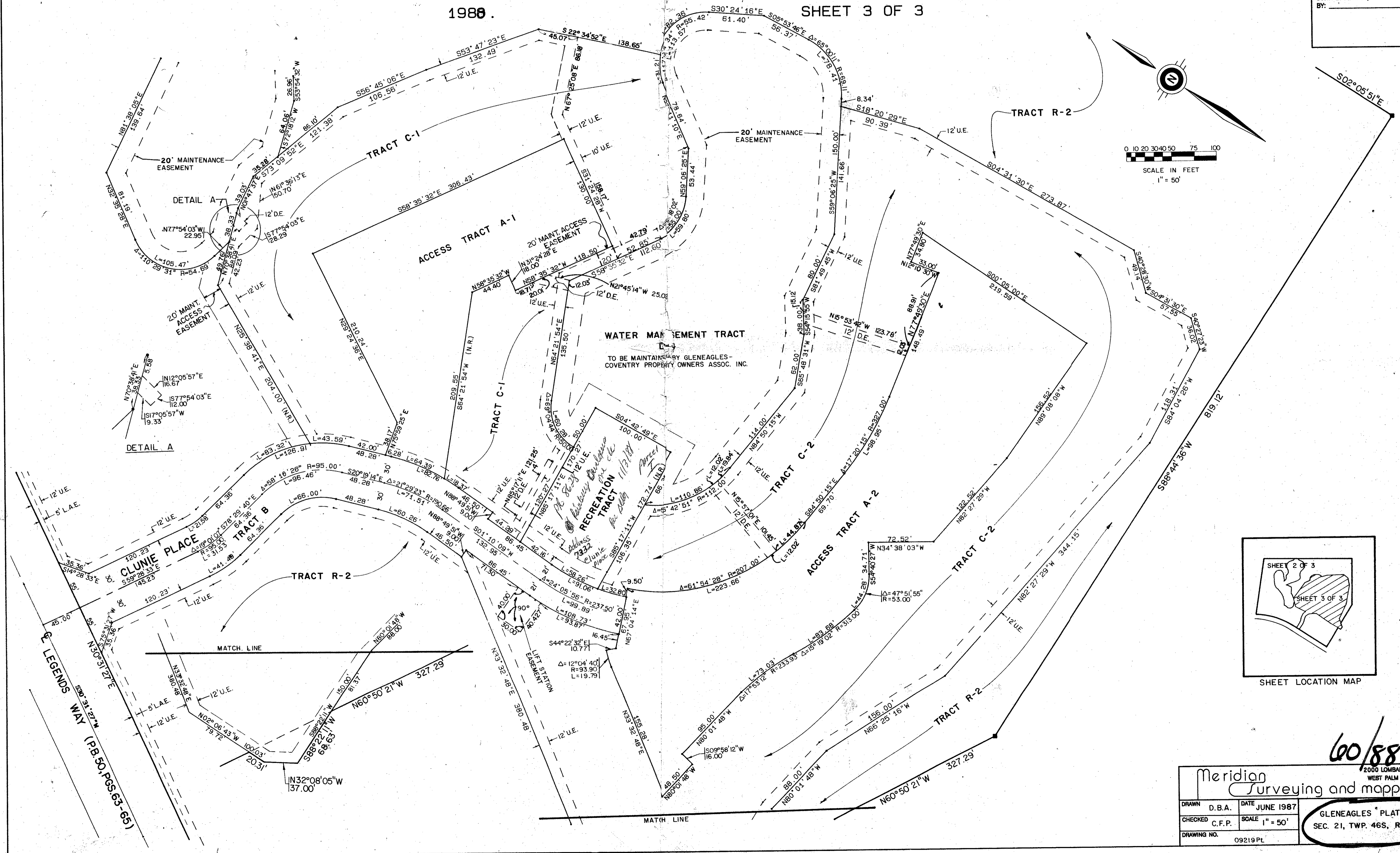
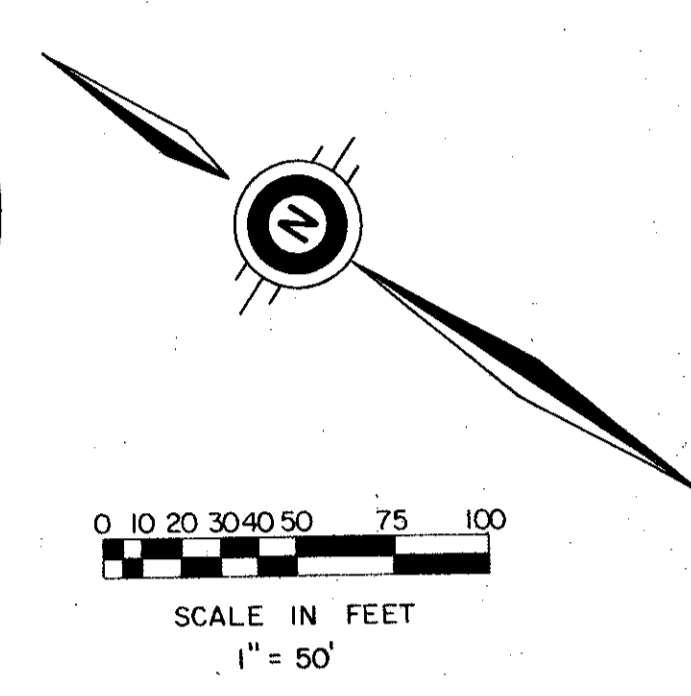
(PART OF GLENEAGLES P.U.D.)

SITUATE IN SECTION 21, TOWNSHIP 46 SOUTH, RANGE 42 EAST, PALM BEACH COUNTY, FLORIDA
BEING A REPLAT OF A PORTION OF GLENEAGLES PLAT ONE (P.B. 50, PGS. 63-65), AND
A PORTION OF GLENEAGLES PLAT EIGHT (P.B. 54, PGS. 114-117)

1988.

SHEET 3 OF 3

STATE OF FLORIDA
COUNTY OF PALM BEACH
THIS PLAT WAS FILED FOR
RECORD
THIS _____ DAY OF _____
AD, 1988, AND DULY RECORDED
IN PLAT BOOK _____ ON PAGES
_____ AND _____
JOHN B. DUNKLE, CLERK
BY: _____, D.C.



SUBDIVISION: Gleneagles
BOOK: 60
PAGE: 68
DATE: 6/22/88
BY: J.B.D.
REVISION: 11/10/87

REVISED: PER PALM BEACH COUNTY FIRST COMMENTS LETTER 11/10/87 STK

Meridian Surveying and mapping inc.
2000 LOMBARD STREET
WEST PALM BEACH, FL.

DRAWN	D.B.A.	DATE	JUNE 1987
CHECKED	C.F.P.	SCALE	1" = 50'
DRAWING NO.	09219 PL		

GLENEAGLES PLAT TEN
SEC. 21, TWP. 46S, RGE. 42E

60/88